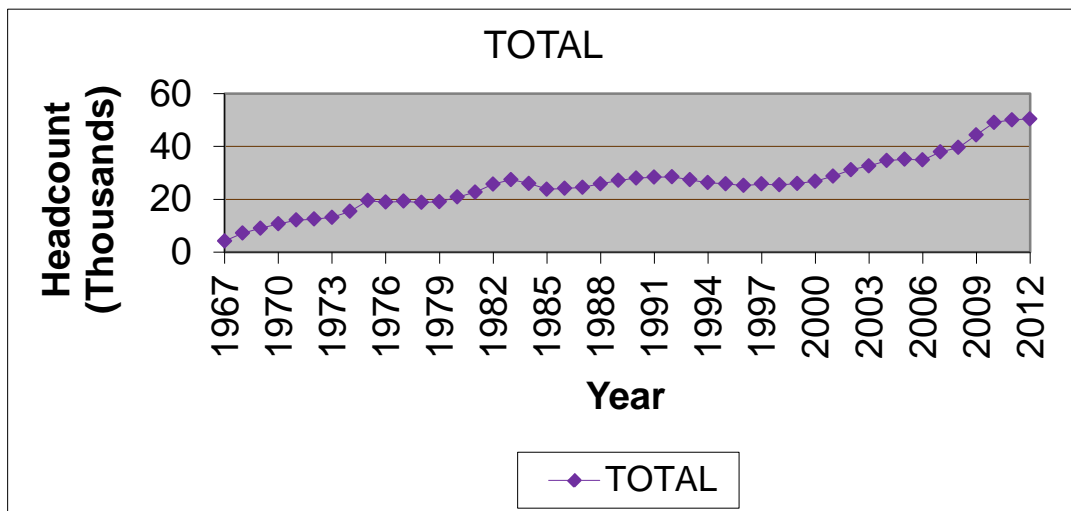


# STATISTICAL HANDBOOK

---

## 2012FL

### HEADCOUNT ENROLLMENTS FALL SEMESTERS -- 1967 – PRESENT



Office of Institutional Research, Planning  
and Effectiveness

---

Tarrant County College

# Table of Contents

## TCCD 2012 Fall Semester Statistical Handbook

	Page
Introduction	1
Section I: Historical Data	2
Table 1.    Headcount and Full-Time Equivalent	3
Figure 1.   Headcount Enrollments by Campus, Fall Semesters	4
Section II: Demographic Data	5
Table 2.    2012 Fall Headcount, Enrollments, Contact Hours, and Semester Hours	6
Table 3.    2012 Fall – Race & Ethnicity by Gender – District	7
Table 4.    2012 Fall – Race & Ethnicity by Gender – South	8
Table 5.    2012 Fall – Race & Ethnicity by Gender – Northeast	9
Table 6.    2012 Fall – Race & Ethnicity by Gender – Northwest	10
Table 7.    2012 Fall – Race & Ethnicity by Gender – Southeast	11
Table 8.    2012 Fall – Race & Ethnicity by Gender – Trinity River	12
Table 9a.   Average Age by Campus – Separated by Age Group	13
Table 9b.   Average Age by Campus – Mean	13
Table 9c.   Students by Zip Code	14
Table 10.   Full/Part Time for District	17
Table 11.   Full/Part Time by Campus	17
Section III: Course Enrollments by Department by Campus	18
Table 12.   Enrollments by Department	19
Section IV: Course Enrollments by Course Number by Campus	22
Table 13.   Enrollments by Course	23
Section V: IPEDS Race & Ethnicity Data	38
Table 14.   2012 Fall – Race/Ethnicity by Gender – District	39
Table 15.   2012 Fall – Race/Ethnicity by Gender – South	40
Table 16.   2012 Fall – Race/Ethnicity by Gender – Northeast	41
Table 17.   2012 Fall – Race/Ethnicity by Gender – Northwest	42
Table 18.   2012 Fall – Race/Ethnicity by Gender – Southeast	43
Table 19.   2012 Fall – Race/Ethnicity by Gender – Trinity River	44
Section VI: Other Student & Enrollment Data	45
Table 20.   Developmental Education Courses by Campus	46
Table 21.   Dual Credit Enrollments by Campus	48
Table 22.   Distance Learning Enrollments by Campus	49
Table 23.   Sections Taught by Adjunct & Full-time Faculty	50
Table 24.   Ratio Comparison of 2012FL data to 2011FL data	51
Table 25.   Weekend College Enrollments by Campus	52

## **INTRODUCTION**

This statistical handbook contains data on TCCD credit students for Fall 2012. It does not include Continuing Education students.

Table 2 contains information related to the source of the data in this report and how the data in this report relates to data in other reports such as the certified state reports. Minor differences are to be expected between *Colleague* reports that are run at different times; this data may vary slightly from other *Colleague* reports. Audit enrollments are included in this report.

If there are questions about this statistical handbook, please contact the TCCD Office of Institutional Research, Planning and Effectiveness.

# Section I

## HISTORICAL DATA

### LIMITATIONS OF STATISTICAL HANDBOOK DATA

**Section I contains data on TCCD credit students for Fall 2012 (does not include Continuing Education students).**

**This section is based on data collected from the *Colleague* system for all semesters beginning in the year 2004. All data identified that is prior to 2004 was collected utilizing the Legacy system. Minor differences are to be expected between *Colleague* reports that are run at different times; thus, this data may vary slightly from other *Colleague* reports.**

**Minor differences are to be expected between the data in this section and the certified state reports.**

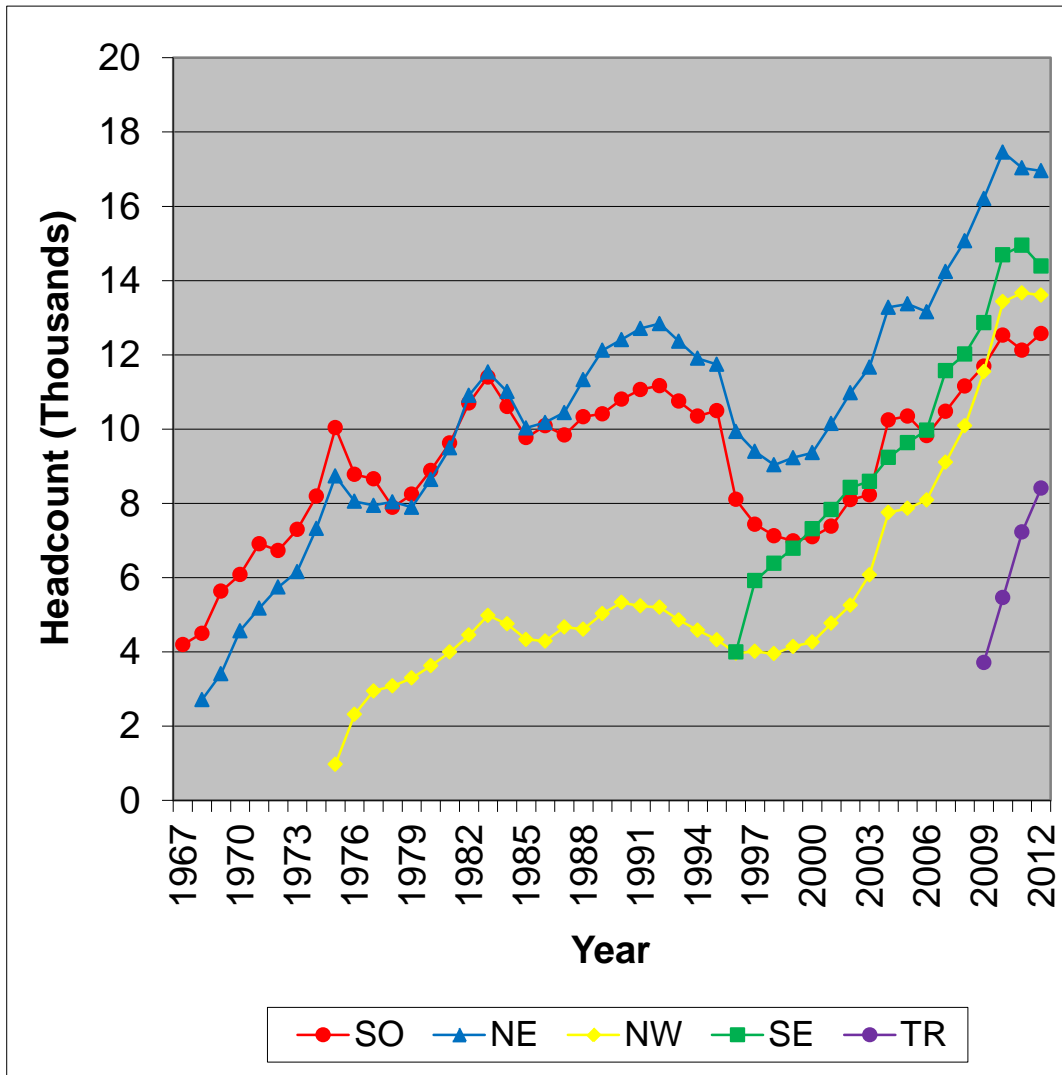
**TABLE 1--FALL SEMESTERS  
HEADCOUNT AND FULL-TIME EQUIVALENT**

YEAR	District			South			Northeast			Northwest			Southeast			Trinity River		
	Total	HC	FTE	HC	FTE	% of Total	HC	FTE	% of Total	HC	FTE	% of Total	HC	FTE	% of Total	HC	FTE	% of Total
1976-77	18899	19148	11459	8776	5357	46.75	8053	4741	41.37	2319	1361	11.88						
1977-78	19257	19554	11323	8663	5086	44.92	7945	4540	40.10	2946	1697	14.99						
1978-79	18745	19018	10302	7895	4314	41.88	8042	4304	41.78	3081	1684	16.35						
1979-80	19085	19432	10375	8243	4458	42.97	7893	4158	40.08	3296	1759	16.95						
1980-81	20798	21152	11124	8883	4709	42.33	8644	4504	40.49	3625	1911	17.18						
1981-82	22731	23117	12035	9627	5036	41.84	9493	4936	41.01	3997	2063	17.14						
1982-83	25746	26163	13704	10703	5615	40.97	10910	5699	41.59	4550	2390	17.44						
1983-84	27452	27919	14398	11401	5930	41.19	11535	5905	41.01	4983	2563	17.80						
1984-85	25990	26369	13257	10606	5386	40.63	11010	5490	41.41	4753	2381	17.96						
1985-86	23783	24135	12408	9768	5011	40.39	10030	5193	41.85	4337	2204	17.76						
1986-87	24092	24562	12726	10090	5110	40.15	10178	5422	42.61	4294	2194	17.24						
1987-88	24490	24949	12989	9839	5004	38.52	10445	5588	43.02	4665	2397	18.45						
1988-89	25857	26280	13746	10334	5247	38.17	11333	6077	44.21	4613	2422	17.62						
1989-90	27109	27559	14339	10409	5337	37.22	12120	6409	44.70	5030	2593	18.08						
1990-91	27999	28546	15082	10804	5643	37.42	12410	6669	44.22	5332	2770	18.37						
1991-92	28349	29009	15332	11064	5702	37.19	12711	6888	44.93	5234	2742	17.88						
1992-93	28515	29211	15624	11168	5857	37.49	12840	7020	44.93	5203	2747	17.58						
1993-94	27352	27977	15075	10749	5680	37.68	12367	6802	45.12	4861	2593	17.20						
1994-95	26253	26838	14387	10349	5474	38.05	11906	6456	44.87	4583	2457	17.08						
1995-96	25850	26565	14186	10496	5559	39.19	11742	6290	44.34	4327	2337	16.47						
1996-97	25174	25998	13857	8106	4333	31.27	9935	5323	38.41	3964	2128	15.36	3993	2073	14.96			
1997-98	25779	26762	14380	7436	3946	27.44	9397	5040	35.05	4013	2168	15.08	5916	3226	22.43			
1998-99	25432	26501	14828	7128	3943	26.59	9038	5066	34.17	3951	2158	14.55	6384	3661	24.69			
1999-00	25980	27159	15168	6991	3859	25.44	9230	5140	33.89	4145	2288	15.08	6793	3881	25.59			
2000-01	26836	28038	15740	7097	3933	24.99	9364	5249	33.35	4263	2366	15.03	7314	4192	26.63			
2001-02	28751	30139	17066	7383	4195	24.58	10149	5737	33.62	4772	2620	15.35	7835	4514	26.45			
2002-03	31169	32755	18479	8096	4615	24.97	10975	6138	33.22	5259	2912	15.76	8425	4814	26.05			
2003-04	32657	34562	19388	8229	4588	23.66	11663	6505	33.55	6077	3354	17.30	8593	4941	25.48			
2004-05	34642	40519	20402	10248	5096	24.98	13279	6712	32.90	7757	3674	18.01	9235	4920	24.12			
2005-06	35163	41219	20509	10348	5057	24.66	13370	6693	32.63	7866	3717	18.12	9635	5042	24.58			
2006-07	34854	41045	20206	9826	4737	23.44	13157	6542	32.38	8091	3776	18.69	9971	5151	25.49			
2007-08	37948	45408	21658	10481	4922	22.73	14246	7013	32.38	9107	4096	18.91	11574	5627	25.98			
2008-09	39596	48335	22649	11155	5071	22.39	15071	7338	32.40	10086	4493	19.84	12023	5746	25.37			
2009-10	44355	56030	25536	11695	5269	20.63	16209	7762	30.40	11548	5051	19.78	12861	6080	23.81	3717	1374	5.381
2010-11	49108	63565	28417	12524	5497	19.34	17458	8199	28.85	13431	5797	20.40	14692	6719	23.64	5460	2205	7.759
2011-12	50062	64998	29054	12123	5267	18.13	17032	7877	27.11	13669	5868	20.20	14945	6939	23.88	7229	3102	10.68
2012-13	50439	65936	29403	12574	5388	18.32	16956	7890	26.83	13609	5794	19.71	14390	6701	22.79	8407	3630	12.35

**Note: District total represents unduplicated headcount**

**Figure 1. Headcount Enrollments by Campus, Fall Semesters**

**Fall 1967 to Fall 2012**



# Section II

## DEMOGRAPHIC DATA

**Tables 3 through 8 in Section II contain the raw data for the categories of race and ethnicity. The changes in race and ethnicity are due to Federal reporting requirements. Section V contains race/ethnicity data of a different format.**

### LIMITATIONS OF STATISTICAL HANDBOOK DATA

**Section II contains data on TCCD credit students for Fall 2012 (does not include Continuing Education students). This section is based on data from the *Colleague* system. Minor differences are to be expected between *Colleague* reports that are run at different times; thus, this data may vary slightly from other *Colleague* reports.**

**Minor differences are to be expected between the data in this section and the certified state reports.**

**Table 2. 2012FL Headcount, Enrollments, Contact Hours, and Semester Hours**

UG CONTACT HOURS AND HEADCOUNT

TERM: 2012FL

CAMPUS	HEADCOUNT	CREDIT STUDENTS		SEMESTER HOURS	FTE
		NUMBER OF ENROLLMENTS	CONTACT HOURS		
Northeast	16,956	43,468	2,185,216	118,354	7,890
Northwest	13,609	31,369	1,577,056	86,904	5,794
Southeast	14,390	36,963	1,806,880	100,514	6,701
South	12,574	29,069	1,488,312	80,823	5,388
Trinity River	8,407	19,908	1,061,098	54,454	3,630
TOTAL (Dupl)	65,936	160,777	8,118,562	441,049	29,403
TOTAL (Undupl)	50,439				

Notes: This report was run on the *Colleague* system using the semester as defined by the *Colleague* field Term.

This report includes all enrollments for the *Colleague* Term (semester) as of the run time. This data will differ from some other reports that only include enrollments in classes with an ODOR (Official Day of Record) on or before the official semester ODOR (i.e. some reports exclude some "miniterm" enrollments).

This report may differ from other *Colleague* reports with different run time/dates. The data in this Table 2 is based on an XUHS run made 9/13/2012 at 5:15:31.

This report will differ from the certified state reports. State reports use a different definition for semester.



**Table 3. 2012FL Race & Ethnicity by Gender TCCD District**

This page contains the raw data for the categories of race and ethnicity. The changes in race and ethnicity are due to Federal reporting requirements. Section V contains race/ethnicity data of a format similar to earlier Statistical Handbooks.

Female

Races	Ethnics				Total
		Ethnicity Unknown	Hispanic/Latino	Non Hispanic/Latino	
	32	8	4476	25	4541
American/Alaska Native	0	4	56	144	204
Asian	1	19	19	1580	1619
Black or African American	2	91	80	6031	6204
Hawaiian/Pacific Islander	0	2	14	43	59
International	0	167	53	41	261
Multi	0	21	93	303	417
Race Unknown	3	147	1928	82	2160
White	5	222	1066	12986	14279
<b>Total</b>	<b>43</b>	<b>681</b>	<b>7785</b>	<b>21235</b>	<b>29744</b>

Male

Races	Ethnics				Total
		Ethnicity Unknown	Hispanic/Latino	Non Hispanic/Latino	
	29	20	2945	26	3020
American/Alaska Native	0	2	37	113	152
Asian	1	26	14	1308	1349
Black or African American	4	92	50	3227	3373
Hawaiian/Pacific Islander	0	4	7	42	53
International	2	125	21	31	179
Multi	0	18	59	211	288
Race Unknown	1	106	1344	53	1504
White	3	241	699	9834	10777
<b>Total</b>	<b>40</b>	<b>634</b>	<b>5176</b>	<b>14845</b>	<b>20695</b>

**Table 4. 2012FL Race & Ethnicity by Gender SO Campus**

This page contains the raw data for the categories of race and ethnicity. The changes in race and ethnicity are due to Federal reporting requirements. Section V contains race/ethnicity data of a format similar to earlier Statistical Handbooks.

Female

Races	Ethnics				Total
		Ethnicity Unknown	Hispanic/Latino	Non Hispanic/Latino	
	5	1	0	14	20
American/Alaska Native	0	1	0	39	40
Asian	0	2	0	252	254
Black or African American	1	23	0	2222	2246
Hawaiian/Pacific Islander	0	1	0	11	12
Hispanic/Latino	0	0	1910	0	1910
International	0	36	6	6	48
Multi	0	4	0	63	67
Race Unknown	0	39	0	26	65
White	0	29	0	2980	3009
<b>Total</b>	<b>6</b>	<b>136</b>	<b>1916</b>	<b>5613</b>	<b>7671</b>

Male

Races	Ethnics				Total
		Ethnicity Unknown	Hispanic/Latino	Non Hispanic/Latino	
	9	2	0	4	15
American/Alaska Native	0	0	0	23	23
Asian	1	3	0	213	217
Black or African American	0	28	0	1105	1133
Hawaiian/Pacific Islander	0	0	0	6	6
Hispanic/Latino	0	0	1263	0	1263
International	1	30	8	5	44
Multi	0	4	0	44	48
Race Unknown	1	29	0	11	41
White	2	41	0	2070	2113
<b>Total</b>	<b>14</b>	<b>137</b>	<b>1271</b>	<b>3481</b>	<b>4903</b>

**Table 5. 2012FL Race & Ethnicity by Gender NE Campus**

This page contains the raw data for the categories of race and ethnicity. The changes in race and ethnicity are due to Federal reporting requirements. Section V contains race/ethnicity data of a format similar to earlier Statistical Handbooks.

Female

Races	Ethnics				Total
		Ethnicity Unknown	Hispanic/Latino	Non Hispanic/Latino	
	6	0	0	5	11
American/Alaska Native	0	2	0	62	64
Asian	0	10	0	532	542
Black or African American	2	37	0	1846	1885
Hawaiian/Pacific Islander	0	2	0	15	17
Hispanic/Latino	0	0	1962	0	1962
International	0	38	5	14	57
Multi	0	5	0	124	129
Race Unknown	1	41	0	31	73
White	1	97	0	5202	5300
<b>Total</b>	<b>10</b>	<b>232</b>	<b>1967</b>	<b>7831</b>	<b>10040</b>

Male

Races	Ethnics				Total
		Ethnicity Unknown	Hispanic/Latino	Non Hispanic/Latino	
	4	1	0	8	13
American/Alaska Native	0	1	0	35	36
Asian	0	13	0	417	430
Black or African American	0	28	0	924	952
Hawaiian/Pacific Islander	0	2	0	23	25
Hispanic/Latino	0	0	1224	0	1224
International	1	35	3	8	47
Multi	0	10	0	83	93
Race Unknown	0	31	0	28	59
White	1	118	0	3918	4037
<b>Total</b>	<b>6</b>	<b>239</b>	<b>1227</b>	<b>5444</b>	<b>6916</b>

**Table 6. 2012FL Race & Ethnicity by Gender NW Campus**

This page contains the raw data for the categories of race and ethnicity. The changes in race and ethnicity are due to Federal reporting requirements. Section V contains race/ethnicity data of a format similar to earlier Statistical Handbooks.

Female

Races	Ethnics				Total
		Ethnicity Unknown	Hispanic/Latino	Non Hispanic/Latino	
	2	0	0	4	6
American/Alaska Native	0	1	0	42	43
Asian	0	4	0	321	325
Black or African American	0	20	0	1292	1312
Hawaiian/Pacific Islander	0	1	0	13	14
Hispanic/Latino	0	0	2281	0	2281
International	0	34	16	4	54
Multi	0	9	0	81	90
Race Unknown	0	55	0	18	73
White	1	77	0	4079	4157
<b>Total</b>	<b>3</b>	<b>201</b>	<b>2297</b>	<b>5854</b>	<b>8355</b>

Male

Races	Ethnics				Total
		Ethnicity Unknown	Hispanic/Latino	Non Hispanic/Latino	
	2	1	0	9	12
American/Alaska Native	0	1	0	26	27
Asian	0	4	0	234	238
Black or African American	0	18	0	558	576
Hawaiian/Pacific Islander	0	1	0	6	7
Hispanic/Latino	0	0	1364	0	1364
International	0	31	9	3	43
Multi	0	2	0	48	50
Race Unknown	0	16	0	12	28
White	0	71	0	2838	2909
<b>Total</b>	<b>2</b>	<b>145</b>	<b>1373</b>	<b>3734</b>	<b>5254</b>

**Table 7. 2012FL Race & Ethnicity by Gender SE Campus**

This page contains the raw data for the categories of race and ethnicity. The changes in race and ethnicity are due to Federal reporting requirements. Section V contains race/ethnicity data of a format similar to earlier Statistical Handbooks.

Female

Races	Ethnics				Total
		Ethnicity Unknown	Hispanic/Latino	Non Hispanic/Latino	
	19	7	0	10	36
American/Alaska Native	0	0	0	36	36
Asian	1	4	0	674	679
Black or African American	0	38	0	2288	2326
Hawaiian/Pacific Islander	0	1	0	13	14
Hispanic/Latino	0	0	1972	0	1972
International	0	71	13	23	107
Multi	0	4	0	100	104
Race Unknown	0	49	0	23	72
White	4	38	0	3165	3207
<b>Total</b>	<b>24</b>	<b>212</b>	<b>1985</b>	<b>6332</b>	<b>8553</b>

Male

Races	Ethnics				Total
		Ethnicity Unknown	Hispanic/Latino	Non Hispanic/Latino	
	17	16	0	6	39
American/Alaska Native	0	0	0	33	33
Asian	0	5	0	578	583
Black or African American	4	30	0	1257	1291
Hawaiian/Pacific Islander	0	1	0	12	13
Hispanic/Latino	0	0	1341	0	1341
International	1	53	3	17	74
Multi	0	5	0	54	59
Race Unknown	0	38	0	11	49
White	0	31	0	2324	2355
<b>Total</b>	<b>22</b>	<b>179</b>	<b>1344</b>	<b>4292</b>	<b>5837</b>

**Table 8. 2012FL Race & Ethnicity by Gender TR Campus**

This page contains the raw data for the categories of race and ethnicity. The changes in race and ethnicity are due to Federal reporting requirements. Section V contains race/ethnicity data of a format similar to earlier Statistical Handbooks.

Female

Races	Ethnics				Total
		Ethnicity Unknown	Hispanic/Latino	Non Hispanic/Latino	
	1	1	0	1	3
American/Alaska Native	0	1	0	31	32
Asian	0	2	0	225	227
Black or African American	0	18	0	1058	1076
Hawaiian/Pacific Islander	0	0	0	6	6
Hispanic/Latino	0	0	1775	0	1775
International	0	38	19	6	63
Multi	0	3	0	46	49
Race Unknown	2	25	0	11	38
White	0	26	0	2170	2196
<b>Total</b>	<b>3</b>	<b>114</b>	<b>1794</b>	<b>3554</b>	<b>5465</b>

Male

Races	Ethnics				Total
		Ethnicity Unknown	Hispanic/Latino	Non Hispanic/Latino	
	3	0	0	3	6
American/Alaska Native	0	0	0	13	13
Asian	0	2	0	132	134
Black or African American	0	10	0	456	466
Hawaiian/Pacific Islander	0	1	0	1	2
Hispanic/Latino	0	0	1036	0	1036
International	0	12	4	4	20
Multi	0	2	0	26	28
Race Unknown	0	17	0	3	20
White	0	20	0	1197	1217
<b>Total</b>	<b>3</b>	<b>64</b>	<b>1040</b>	<b>1835</b>	<b>2942</b>

**Table 9a. 2012FL Age by Campus**

		Campus					Total
		NE	NW	SE	SO	TR	
Under 21	Count	6201	4926	6131	3926	2901	24085
	% within Campus	36.6%	36.2%	42.6%	31.2%	34.5%	36.5%
21-25	Count	4520	3534	3708	3252	2310	17324
	% within Campus	26.7%	26.0%	25.8%	25.9%	27.5%	26.3%
26-30	Count	2196	1861	1610	1765	1126	8558
	% within Campus	13.0%	13.7%	11.2%	14.0%	13.4%	13.0%
31-35	Count	1456	1273	1050	1304	717	5800
	% within Campus	8.6%	9.4%	7.3%	10.4%	8.5%	8.8%
36-40	Count	899	798	701	792	474	3664
	% within Campus	5.3%	5.9%	4.9%	6.3%	5.6%	5.6%
Over 40	Count	1684	1217	1190	1535	879	6505
	% within Campus	9.9%	8.9%	8.3%	12.2%	10.5%	9.9%
Total	Count	16956	13609	14390	12574	8407	65936
	% within Campus	100.0%	100.0%	100.0%	100.0%	100.0%	100.0%

**Table 9b. 2012FL Average Age by Campus**

NE	NW	SE	SO	TR	TCCD
26.60	26.44	25.45	27.81	26.81	26.07*

\* The TCCD average age of 26.07 is based on the average age of the unduplicated enrollment count of 50,439.

**Table 9c. 2012FL Students by ZIP Code**

Zip Code	Campus					Total
	NE	NW	SE	SO	TR	
76063	227	208	1577	318	121	2451
76137	936	924	125	207	214	2406
75052	220	160	1339	214	125	2058
76179	252	1202	86	169	165	1874
76017	199	157	986	384	122	1848
76244	674	652	96	135	141	1698
76133	156	212	86	791	351	1596
76180	971	193	69	132	97	1462
76002	136	103	983	169	69	1460
76018	136	98	906	146	79	1365
76248	700	402	57	92	97	1348
76014	154	106	841	156	61	1318
76028	154	152	177	632	197	1312
76001	115	98	799	218	80	1310
76123	118	166	92	653	258	1287
76010	131	90	834	134	64	1253
76108	142	690	56	144	188	1220
76116	135	403	61	258	350	1207
76131	222	685	66	102	122	1197
76016	138	76	522	308	105	1149
76106	91	687	31	72	229	1110
76021	800	104	56	81	62	1103
76112	350	115	79	292	260	1096
76119	126	100	82	601	183	1092
76013	203	95	500	205	78	1081
76051	751	80	45	56	40	972
76039	663	120	76	68	44	971
76140	91	102	98	569	110	970
76053	644	114	38	91	77	964
76117	431	189	40	78	168	906
76110	90	95	30	353	333	901
76134	91	83	66	504	128	872
76148	470	201	46	72	68	857
76132	102	151	72	360	169	854
76040	540	91	92	77	50	850
76006	244	83	346	83	71	827
76114	89	325	31	72	279	796
76036	108	73	70	438	94	783
76182	569	96	46	46	26	783
76135	71	462	39	63	81	716
76107	85	127	45	113	345	715
76012	209	64	274	86	68	701
76011	164	84	297	84	55	684
76015	100	62	356	118	46	682
76120	230	82	69	122	103	606



Zip Code	Campus				TR	Total
	NE	NW	SE	SO		
76111	115	117	25	45	279	581
76020	50	403	26	38	57	574
76126	63	204	35	148	108	558
76034	423	45	17	28	26	539
76262	236	171	29	56	22	514
76115	32	48	25	283	117	505
76092	403	41	17	17	14	492
76105	62	39	36	226	129	492
76052	109	267	25	49	32	482
76118	288	56	22	59	37	462
76104	42	52	27	176	161	458
76022	290	56	27	39	26	438
76164	29	174	8	21	183	415
76109	39	58	22	128	145	392
76103	88	53	22	94	127	384
76054	249	31	14	28	21	343
75050	93	32	138	43	27	333
76060	29	18	60	128	17	252
76102	45	27	7	49	111	239
75054	28	20	148	26	16	238
76177	46	102	7	29	24	208
76058	13	25	23	89	39	189
76247	47	90	11	18	19	185
75051	31	14	111	19	9	184
76009	26	20	58	54	13	171
76155	71	17	17	11	13	129
76008	17	47	5	19	36	124
75104	11	12	65	15	10	113
76087	14	39	10	27	21	111
76078	19	59	4	13	15	110
76065	10	10	52	20	8	100
76082	9	52	10	9	9	89
75115	12	9	38	13	2	74
76049	13	17	11	19	12	72
76033	13	6	4	28	7	58
76085	5	40	2	3	7	57
76048	9	15	4	17	11	56
76084	8	4	24	11	5	52
76031	5	5	5	26	7	48
75062	25	8	2	6	4	45
75165	7	6	17	9	6	45
75038	15	7	9	5	4	40
75154	4	11	16	7	2	40
75116	6	3	20	4	2	35
75137	6	6	19	3	1	35
76071	8	24	0	3	0	35
76086	4	14	3	8	6	35
75019	26	3	2	1	2	34

Zip Code	Campus					Total
	NE	NW	SE	SO	TR	
76023	5	21	0	3	5	34
76234	13	12	2	2	5	34
75249	1	6	23	2	1	33
75067	17	4	2	2	5	30
75237	7	6	10	6	0	29
76059	5	5	1	13	5	29
75061	12	4	5	4	1	26
75028	10	8	3	4	0	25
75236	5	4	12	2	2	25
76096	4	6	10	4	1	25
75146	5	5	8	4	2	24
75216	7	3	9	3	2	24
76088	3	9	1	4	7	24
75060	9	3	6	3	2	23
75119	5	2	5	5	6	23
75243	7	5	5	3	3	23
75149	4	5	4	4	4	21
75211	3	2	13	0	3	21
75232	4	2	10	3	2	21
76210	2	7	2	0	10	21
72209	6	4	3	6	1	20
75022	12	3	1	0	4	20
75217	8	2	5	2	3	20
75241	4	0	9	5	2	20
76003	2	2	10	1	4	19
75081	5	4	4	1	3	17
76044	2	6	0	7	2	17
72114	5	5	1	4	1	16
76035	2	8	1	4	1	16
76161	3	8	1	1	3	16
76226	4	8	1	1	2	16
75224	3	3	6	1	2	15
76101	3	3	1	6	2	15
76127	0	10	0	0	5	15
Other	348	285	255	231	184	1303
<b>Total</b>	<b>16956</b>	<b>13609</b>	<b>14390</b>	<b>12574</b>	<b>8407</b>	<b>65936</b>

\*\* ZIP Code groups with < 15 and students without Zip Codes are identified as Other.

**Table 10. 2012FL Full/Part Time for TCCD**

	Frequency	Percent
Part Time	33201	65.8
Full Time	17238	34.2
Total	50439	100.0

Table 10 is the full/part time student data for the TCCD district as a whole.

**Table 11. 2012FL Full/Part Time by Campus**

Campus		Full/Part Time		Total
		Part Time	Full Time	
NE	Count	13643	3313	16956
	% within Campus	80.5%	19.5%	100.0%
	% within Full/Part Time	25.2%	28.2%	25.7%
NW	Count	11471	2138	13609
	% within Campus	84.3%	15.7%	100.0%
	% within Full/Part Time	21.2%	18.2%	20.6%
SE	Count	11364	3026	14390
	% within Campus	79.0%	21.0%	100.0%
	% within Full/Part Time	21.0%	25.8%	21.8%
SO	Count	10550	2024	12574
	% within Campus	83.9%	16.1%	100.0%
	% within Full/Part Time	19.5%	17.2%	19.1%
TR	Count	7168	1239	8407
	% within Campus	85.3%	14.7%	100.0%
	% within Full/Part Time	13.2%	10.6%	12.8%
Total	Count	54196	11740	65936
	% within Campus	82.2%	17.8%	100.0%
	% within Full/Part Time	100.0%	100.0%	100.0%

Table 11 is the full/part time student data for each individual campus. For this table, only enrollments at the individual campus are considered. For example, if a student took 9 hours at SO and 3 hours at NE, the student is listed as part time at SO and part time at NE (and full time in Table 10).

# Section III

## Course Enrollments by Department by Campus

### LIMITATIONS OF STATISTICAL HANDBOOK DATA

**Section III contains data on TCCD credit students for Fall 2012 (does not include Continuing Education students). This section is based on data from the *Colleague* system. Minor differences are to be expected between *Colleague* reports that are run at different times; thus, this data may vary slightly from other *Colleague* reports.**

**Minor differences are to be expected between the data in this section and the certified state reports.**

**Section III excludes 11,584 enrollments in separate lab sections that are included in Section II. Section II contains 160,777 total enrollments for 2012FL. This section contains 149,193 enrollments.**

## Course Enrollments

Tables 12 and 13 exclude 11,584 enrollments in separate lab sections that are included in Table 2. Table 2 contains 160,777 total enrollments for 2012FL. Tables 12 and 13 contain 149,193 enrollments.

**Table 12. 2012FL Enrollments by Department**

Department	Campus					Total
	NE	NW	SE	SO	TR	
ABDR	0	0	0	176	0	176
ACCT	405	351	434	204	196	1590
ACNT	69	20	24	281	0	394
AERM	0	902	0	0	0	902
ANTH	37	0	0	0	91	128
ARCH	0	0	119	0	0	119
ARCT	0	0	2	0	0	2
ARTC	197	0	0	0	0	197
ARTS	1413	938	823	641	415	4230
ARTV	39	0	0	0	0	39
AUMT	0	0	0	370	0	370
AVNC	0	22	0	0	0	22
BCIS	931	593	551	448	318	2841
BIOL	2256	1144	1763	1300	723	7186
BMGT	254	234	241	287	107	1123
BNKG	0	0	0	9	0	9
BUSG	40	338	31	27	0	436
BUSI	298	184	245	244	126	1097
CDEC	311	0	0	0	0	311
CETT	0	0	0	154	0	154
CHEF	0	0	165	0	0	165
CHEM	664	435	591	342	292	2324
CJLE	0	188	0	0	0	188
CJSA	0	61	0	0	0	61
CNBT	0	0	111	0	0	111
COMM	268	23	26	0	20	337
COSC	670	758	664	501	253	2846
CPMT	18	0	0	50	0	68
CRIJ	0	393	0	0	0	393
DAAC	118	0	0	0	0	118
DANC	301	299	175	255	0	1030
DFTG	0	0	0	182	0	182
DHYG	206	0	0	0	0	206
DRAM	434	382	486	279	86	1667
ECON	462	590	1171	481	286	2990
EDTC	2	0	0	0	0	2

Department	Campus					Total
	NE	NW	SE	SO	TR	
EDUC	169	0	0	99	0	268
ELMT	0	0	0	18	0	18
ELPT	0	0	0	10	0	10
EMSP	318	0	0	0	0	318
ENGL	5887	4328	4764	3453	2102	20534
ENGR	0	0	138	95	0	233
ENTC	0	0	0	14	0	14
EPCT	0	56	0	0	0	56
ESOL	22	0	142	0	0	164
FDNS	0	0	180	0	0	180
FIRS	0	115	0	0	0	115
FIRT	0	163	0	0	0	163
FLMC	47	0	0	0	0	47
FREN	125	0	23	83	0	231
FSHN	32	0	0	0	0	32
GAME	0	0	0	88	0	88
GEOG	152	160	44	43	0	399
GEOL	459	382	354	307	165	1667
GERM	60	0	0	0	0	60
GISC	0	0	0	0	51	51
GOVT	2367	1697	2348	2320	1109	9841
HALT	0	128	0	0	0	128
HAMG	0	0	213	0	0	213
HART	0	0	0	459	0	459
HECO	282	0	323	76	0	681
HIST	2461	2003	2577	1985	1461	10487
HITT	0	0	0	0	127	127
HPRS	43	0	0	0	388	431
HRPO	19	0	79	129	0	227
HUMA	19	363	35	0	51	468
HYDR	0	0	0	21	0	21
IFWA	0	0	21	0	0	21
IMED	31	0	0	0	0	31
INDS	0	0	19	0	0	19
INRW	11	0	0	28	0	39
ITCC	193	0	41	73	0	307
ITNW	115	54	24	19	0	212
ITSC	208	92	87	65	0	452
ITSE	75	0	55	46	0	176
ITSW	13	25	28	90	17	173
ITSY	141	22	26	23	0	212
LBRA	0	0	0	0	55	55
LGLA	474	0	0	0	15	489

Department	Campus					Total
	NE	NW	SE	SO	TR	
LTCA	0	0	0	0	138	138
MAIR	0	0	0	45	0	45
MATH	4639	3970	5272	3363	1951	19195
MCHN	0	0	0	19	0	19
MILI	0	0	0	11	0	11
MRKG	0	0	27	85	396	508
MUAP	116	92	52	71	0	331
MUEN	72	23	35	33	0	163
MUSI	1040	381	449	373	163	2406
OSHT	0	36	0	0	0	36
PBAD	0	27	0	0	0	27
PHED	1323	1328	1375	940	497	5463
PHIL	654	715	380	532	322	2603
PHTC	67	0	0	0	0	67
PHYS	252	80	180	149	21	682
POFI	0	0	0	148	25	173
POFT	0	0	0	414	30	444
PSTR	0	0	38	0	0	38
PSYC	1827	1253	1551	1063	949	6643
PSYT	154	0	0	0	0	154
PTHA	0	0	0	0	192	192
PTRT	0	0	0	34	0	34
RADR	0	0	0	0	128	128
RBTC	0	0	0	50	0	50
RDNG	505	591	828	768	324	3016
RELE	230	0	0	0	0	230
RNSG	0	0	0	0	1609	1609
RSPT	0	0	0	0	170	170
RSTO	0	0	85	0	0	85
RTVB	168	0	0	0	0	168
SCWK	33	0	0	0	0	33
SLNG	0	0	0	0	365	365
SLPS	0	59	0	0	0	59
SOCI	754	626	1068	302	581	3331
SOCW	33	18	37	0	0	88
SPAN	611	397	351	323	208	1890
SPCH	2316	1349	1466	885	1097	7113
SRGT	0	0	0	0	87	87
STSC	1826	1046	1773	1438	1001	7084
TECA	152	0	0	65	0	217
WLDG	0	0	0	167	0	167
TOTAL	39888	29434	34110	27053	18708	149193

# Section IV

## Course Enrollments by Course Number by Campus

### LIMITATIONS OF STATISTICAL HANDBOOK DATA

**Section IV contains data on TCCD credit students for Fall 2012 (does not include Continuing Education students). This section is based on data from the *Colleague* system. Minor differences are to be expected between *Colleague* reports that are run at different times; thus, this data may vary slightly from other *Colleague* reports.**

**Minor differences are to be expected between the data in this section and the certified state reports.**

**Section IV excludes 11,584 enrollments in separate lab sections that are included in Section II. Section II contains 160,777 total enrollments for 2012FL. This section contains 149,193 enrollments.**



**Table 13. 2012FL Enrollments by Course**

Course	Campus					Total
	NE	NW	SE	SO	TR	
ABDR-1207	0	0	0	34	0	34
ABDR-1291	0	0	0	32	0	32
ABDR-1419	0	0	0	34	0	34
ABDR-1431	0	0	0	32	0	32
ABDR-1555	0	0	0	28	0	28
ABDR-1558	0	0	0	16	0	16
ACCT-2301	320	234	283	140	145	1122
ACCT-2302	85	117	151	64	51	468
ACNT-1303	0	0	0	99	0	99
ACNT-1311	16	20	24	33	0	93
ACNT-1313	53	0	0	18	0	71
ACNT-1329	0	0	0	45	0	45
ACNT-1331	0	0	0	47	0	47
ACNT-2303	0	0	0	11	0	11
ACNT-2309	0	0	0	28	0	28
AERM-1101	0	43	0	0	0	43
AERM-1205	0	45	0	0	0	45
AERM-1208	0	45	0	0	0	45
AERM-1240	0	34	0	0	0	34
AERM-1243	0	23	0	0	0	23
AERM-1254	0	25	0	0	0	25
AERM-1303	0	37	0	0	0	37
AERM-1310	0	45	0	0	0	45
AERM-1314	0	53	0	0	0	53
AERM-1315	0	46	0	0	0	46
AERM-1344	0	36	0	0	0	36
AERM-1345	0	43	0	0	0	43
AERM-1347	0	38	0	0	0	38
AERM-1349	0	35	0	0	0	35
AERM-1350	0	37	0	0	0	37
AERM-1351	0	31	0	0	0	31
AERM-1357	0	33	0	0	0	33
AERM-1456	0	39	0	0	0	39
AERM-2171	0	49	0	0	0	49
AERM-2172	0	47	0	0	0	47
AERM-2173	0	28	0	0	0	28
AERM-2252	0	37	0	0	0	37
AERM-2351	0	24	0	0	0	24
AERM-2447	0	29	0	0	0	29
ANTH-2346	37	0	0	0	91	128
ARCH-1301	0	0	22	0	0	22
ARCH-1303	0	0	18	0	0	18
ARCH-1307	0	0	10	0	0	10
ARCH-1311	0	0	17	0	0	17
ARCH-1315	0	0	21	0	0	21
ARCH-2312	0	0	31	0	0	31

Course	Campus					Total
	NE	NW	SE	SO	TR	
ARCT-2367	0	0	2	0	0	2
ARTC-1305	78	0	0	0	0	78
ARTC-1313	41	0	0	0	0	41
ARTC-1402	15	0	0	0	0	15
ARTC-1453	19	0	0	0	0	19
ARTC-2305	17	0	0	0	0	17
ARTC-2313	12	0	0	0	0	12
ARTC-2440	15	0	0	0	0	15
ARTS-1301	635	631	463	407	301	2437
ARTS-1303	71	30	52	22	24	199
ARTS-1304	58	0	30	0	0	88
ARTS-1311	82	41	42	30	17	212
ARTS-1312	11	0	0	3	0	14
ARTS-1316	135	79	71	63	65	413
ARTS-1317	6	7	9	6	8	36
ARTS-2313	15	0	13	0	0	28
ARTS-2316	43	39	74	30	0	186
ARTS-2317	22	8	9	3	0	42
ARTS-2323	10	7	0	0	0	17
ARTS-2326	16	0	0	0	0	16
ARTS-2333	0	0	0	14	0	14
ARTS-2334	0	0	0	5	0	5
ARTS-2341	0	0	0	15	0	15
ARTS-2346	50	52	44	27	0	173
ARTS-2347	32	15	2	6	0	55
ARTS-2348	33	16	14	7	0	70
ARTS-2349	5	1	0	3	0	9
ARTS-2356	168	0	0	0	0	168
ARTS-2357	21	0	0	0	0	21
ARTS-2366	0	11	0	0	0	11
ARTS-2367	0	1	0	0	0	1
ARTV-1403	39	0	0	0	0	39
AUMT-1253	0	0	0	50	0	50
AUMT-1257	0	0	0	48	0	48
AUMT-1307	0	0	0	50	0	50
AUMT-1310	0	0	0	48	0	48
AUMT-2209	0	0	0	48	0	48
AUMT-2223	0	0	0	39	0	39
AUMT-2313	0	0	0	48	0	48
AUMT-2325	0	0	0	39	0	39
AVNC-1303	0	12	0	0	0	12
AVNC-1371	0	10	0	0	0	10
BCIS-1405	931	593	551	448	318	2841
BIOL-1406	265	109	231	133	105	843
BIOL-1407	38	10	47	23	0	118
BIOL-1408	722	342	326	281	139	1810
BIOL-1409	176	47	116	106	24	469
BIOL-1411	10	0	0	0	0	10
BIOL-2306	29	0	0	56	0	85
BIOL-2316	0	49	36	27	0	112

Course	Campus					Total
	NE	NW	SE	SO	TR	
BIOL-2401	477	297	533	330	201	1838
BIOL-2402	259	160	161	171	160	911
BIOL-2420	280	130	267	173	94	944
BIOL-2421	0	0	46	0	0	46
BMGT-1270	0	5	0	0	0	5
BMGT-1301	56	19	32	0	0	107
BMGT-1305	26	25	60	23	0	134
BMGT-1327	89	108	65	152	49	463
BMGT-1341	48	14	61	112	58	293
BMGT-1382	4	0	0	0	0	4
BMGT-2172	0	21	0	0	0	21
BMGT-2309	31	0	23	0	0	54
BMGT-2473	0	21	0	0	0	21
BMGT-2574	0	21	0	0	0	21
BNKG-1356	0	0	0	9	0	9
BUSG-1302	24	0	0	0	0	24
BUSG-1315	0	111	0	0	0	111
BUSG-1341	0	86	0	0	0	86
BUSG-2170	0	6	0	0	0	6
BUSG-2300	16	25	31	27	0	99
BUSG-2309	0	110	0	0	0	110
BUSI-1301	219	78	136	215	104	752
BUSI-2301	79	106	109	29	22	345
CDEC-1317	29	0	0	0	0	29
CDEC-1321	56	0	0	0	0	56
CDEC-1323	21	0	0	0	0	21
CDEC-1356	48	0	0	0	0	48
CDEC-1358	25	0	0	0	0	25
CDEC-1359	46	0	0	0	0	46
CDEC-1413	20	0	0	0	0	20
CDEC-1419	18	0	0	0	0	18
CDEC-2322	35	0	0	0	0	35
CDEC-2326	13	0	0	0	0	13
CETT-1409	0	0	0	40	0	40
CETT-1431	0	0	0	48	0	48
CETT-1449	0	0	0	42	0	42
CETT-2435	0	0	0	24	0	24
CHEF-1205	0	0	56	0	0	56
CHEF-1264	0	0	8	0	0	8
CHEF-1301	0	0	38	0	0	38
CHEF-1310	0	0	23	0	0	23
CHEF-1345	0	0	20	0	0	20
CHEF-2301	0	0	20	0	0	20
CHEM-1405	99	79	47	44	0	269
CHEM-1406	236	186	231	195	159	1007
CHEM-1407	14	0	0	0	0	14
CHEM-1411	199	100	168	73	86	626
CHEM-1412	55	24	69	10	23	181
CHEM-2423	43	46	76	20	24	209
CHEM-2425	18	0	0	0	0	18

Course	Campus					Total
	NE	NW	SE	SO	TR	
CJLE-1111	0	8	0	0	0	8
CJLE-1345	0	37	0	0	0	37
CJLE-1371	0	29	0	0	0	29
CJLE-1394	0	82	0	0	0	82
CJLE-1506	0	8	0	0	0	8
CJLE-1512	0	8	0	0	0	8
CJLE-1518	0	8	0	0	0	8
CJLE-2247	0	8	0	0	0	8
CJSA-1347	0	28	0	0	0	28
CJSA-1348	0	21	0	0	0	21
CJSA-2334	0	7	0	0	0	7
CJSA-2388	0	5	0	0	0	5
CNBT-1300	0	0	21	0	0	21
CNBT-1311	0	0	26	0	0	26
CNBT-1342	0	0	10	0	0	10
CNBT-1346	0	0	12	0	0	12
CNBT-1372	0	0	15	0	0	15
CNBT-2266	0	0	4	0	0	4
CNBT-2317	0	0	12	0	0	12
CNBT-2342	0	0	11	0	0	11
COMM-1307	151	23	26	0	20	220
COMM-1316	2	0	0	0	0	2
COMM-1335	30	0	0	0	0	30
COMM-2305	8	0	0	0	0	8
COMM-2311	32	0	0	0	0	32
COMM-2339	20	0	0	0	0	20
COMM-2366	25	0	0	0	0	25
COSC-1401	543	616	589	457	225	2430
COSC-1420	0	23	0	0	0	23
COSC-1436	105	98	75	24	28	330
COSC-1437	22	21	0	20	0	63
CPMT-1411	0	0	0	29	0	29
CPMT-1449	0	0	0	21	0	21
CPMT-2402	18	0	0	0	0	18
CRIJ-1301	0	117	0	0	0	117
CRIJ-1306	0	45	0	0	0	45
CRIJ-1307	0	35	0	0	0	35
CRIJ-1310	0	47	0	0	0	47
CRIJ-2313	0	60	0	0	0	60
CRIJ-2314	0	31	0	0	0	31
CRIJ-2323	0	29	0	0	0	29
CRIJ-2328	0	29	0	0	0	29
DAAC-1304	32	0	0	0	0	32
DAAC-2266	11	0	0	0	0	11
DAAC-2307	33	0	0	0	0	33
DAAC-2341	29	0	0	0	0	29
DAAC-2343	13	0	0	0	0	13
DANC-1112	8	7	0	12	0	27
DANC-1113	4	2	0	0	0	6
DANC-1128	11	0	16	0	0	27

Course	Campus					Total
	NE	NW	SE	SO	TR	
DANC-1129	2	0	1	0	0	3
DANC-1141	27	16	0	0	0	43
DANC-1142	3	0	0	0	0	3
DANC-1145	12	8	0	0	0	20
DANC-1146	2	0	0	0	0	2
DANC-1147	10	5	0	0	0	15
DANC-1148	3	0	0	0	0	3
DANC-1151	12	20	13	20	0	65
DANC-1152	2	0	0	0	0	2
DANC-1301	0	8	0	0	0	8
DANC-1341	14	26	17	32	0	89
DANC-1342	6	2	1	7	0	16
DANC-1345	38	49	40	64	0	191
DANC-1346	3	18	6	6	0	33
DANC-1347	7	8	30	22	0	67
DANC-1348	4	2	17	15	0	38
DANC-2112	1	2	0	0	0	3
DANC-2113	6	2	0	0	0	8
DANC-2141	6	3	0	0	0	9
DANC-2142	3	0	0	0	0	3
DANC-2145	2	9	0	0	0	11
DANC-2151	1	7	0	0	0	8
DANC-2152	5	0	0	0	0	5
DANC-2303	109	105	34	77	0	325
DFTG-1405	0	0	0	33	0	33
DFTG-1409	0	0	0	35	0	35
DFTG-1425	0	0	0	52	0	52
DFTG-2431	0	0	0	16	0	16
DFTG-2438	0	0	0	17	0	17
DFTG-2440	0	0	0	11	0	11
DFTG-2458	0	0	0	18	0	18
DHYG-1207	24	0	0	0	0	24
DHYG-1215	22	0	0	0	0	22
DHYG-1235	22	0	0	0	0	22
DHYG-1239	22	0	0	0	0	22
DHYG-1301	24	0	0	0	0	24
DHYG-1311	22	0	0	0	0	22
DHYG-1327	24	0	0	0	0	24
DHYG-1431	24	0	0	0	0	24
DHYG-2360	22	0	0	0	0	22
DRAM-1120	8	40	33	19	0	100
DRAM-1121	0	6	0	6	0	12
DRAM-1161	10	0	0	0	0	10
DRAM-1310	277	201	266	31	30	805
DRAM-1320	7	0	0	0	0	7
DRAM-1330	0	5	0	0	0	5
DRAM-1351	17	38	81	45	22	203
DRAM-1352	8	6	13	8	2	37
DRAM-2120	22	0	0	3	0	25
DRAM-2121	4	0	0	0	0	4

Course	Campus					Total
	NE	NW	SE	SO	TR	
DRAM-2331	0	3	0	0	0	3
DRAM-2351	4	10	2	0	0	16
DRAM-2366	77	73	91	167	32	440
ECON-2301	345	429	882	388	190	2234
ECON-2302	117	161	289	93	96	756
EDTC-1321	2	0	0	0	0	2
EDUC-1301	95	0	0	57	0	152
EDUC-1325	28	0	0	0	0	28
EDUC-2301	46	0	0	42	0	88
ELMT-2437	0	0	0	18	0	18
ELPT-2455	0	0	0	10	0	10
EMSP-1160	80	0	0	0	0	80
EMSP-1355	13	0	0	0	0	13
EMSP-1356	22	0	0	0	0	22
EMSP-1438	22	0	0	0	0	22
EMSP-1501	80	0	0	0	0	80
EMSP-2160	22	0	0	0	0	22
EMSP-2161	13	0	0	0	0	13
EMSP-2162	7	0	0	0	0	7
EMSP-2243	15	0	0	0	0	15
EMSP-2338	7	0	0	0	0	7
EMSP-2430	7	0	0	0	0	7
EMSP-2444	13	0	0	0	0	13
EMSP-2534	17	0	0	0	0	17
ENGL-0324	548	437	516	442	214	2157
ENGL-0325	145	189	274	125	99	832
ENGL-1301	2930	1712	2414	1355	1127	9538
ENGL-1302	1759	1233	925	808	352	5077
ENGL-2307	46	111	86	49	55	347
ENGL-2308	0	13	0	0	7	20
ENGL-2311	0	230	85	48	57	420
ENGL-2322	32	133	87	97	64	413
ENGL-2323	0	0	33	0	0	33
ENGL-2327	138	61	100	120	34	453
ENGL-2328	117	87	96	175	35	510
ENGL-2332	96	69	82	97	32	376
ENGL-2333	76	53	66	50	26	271
ENGL-2342	0	0	0	87	0	87
ENGR-1201	0	0	62	31	0	93
ENGR-1304	0	0	52	15	0	67
ENGR-2301	0	0	0	17	0	17
ENGR-2302	0	0	24	4	0	28
ENGR-2305	0	0	0	20	0	20
ENGR-2432	0	0	0	8	0	8
ENTC-2331	0	0	0	14	0	14
EPCT-1307	0	11	0	0	0	11
EPCT-1311	0	10	0	0	0	10
EPCT-1313	0	12	0	0	0	12
EPCT-1341	0	15	0	0	0	15
EPCT-1440	0	8	0	0	0	8

Course	Campus					Total
	NE	NW	SE	SO	TR	
ESOL-0301	3	0	9	0	0	12
ESOL-0302	6	0	0	0	0	6
ESOL-0303	0	0	21	0	0	21
ESOL-0304	4	0	10	0	0	14
ESOL-0305	3	0	0	0	0	3
ESOL-0306	0	0	18	0	0	18
ESOL-0307	2	0	16	0	0	18
ESOL-0308	0	0	14	0	0	14
ESOL-0309	3	0	18	0	0	21
ESOL-0310	1	0	10	0	0	11
ESOL-0311	0	0	11	0	0	11
ESOL-0312	0	0	15	0	0	15
FDNS-1103	0	0	33	0	0	33
FDNS-1164	0	0	9	0	0	9
FDNS-1309	0	0	35	0	0	35
FDNS-1341	0	0	29	0	0	29
FDNS-1371	0	0	25	0	0	25
FDNS-1447	0	0	13	0	0	13
FDNS-2164	0	0	13	0	0	13
FDNS-2400	0	0	23	0	0	23
FIRS-1301	0	23	0	0	0	23
FIRS-1313	0	23	0	0	0	23
FIRS-1319	0	23	0	0	0	23
FIRS-1323	0	23	0	0	0	23
FIRS-1329	0	23	0	0	0	23
FIRT-1301	0	28	0	0	0	28
FIRT-1307	0	29	0	0	0	29
FIRT-1311	0	15	0	0	0	15
FIRT-1333	0	16	0	0	0	16
FIRT-1338	0	23	0	0	0	23
FIRT-1349	0	17	0	0	0	17
FIRT-1391	0	18	0	0	0	18
FIRT-2309	0	13	0	0	0	13
FIRT-2331	0	4	0	0	0	4
FLMC-1311	26	0	0	0	0	26
FLMC-2434	21	0	0	0	0	21
FREN-1100	16	0	0	3	0	19
FREN-1411	73	0	23	51	0	147
FREN-1412	0	0	0	29	0	29
FREN-2311	36	0	0	0	0	36
FSHN-2309	32	0	0	0	0	32
GAME-1302	0	0	0	23	0	23
GAME-1304	0	0	0	16	0	16
GAME-1403	0	0	0	24	0	24
GAME-2308	0	0	0	11	0	11
GAME-2412	0	0	0	14	0	14
GEOG-1301	112	0	44	0	0	156
GEOG-1302	0	57	0	20	0	77
GEOG-1303	40	103	0	23	0	166
GEOL-1305	21	57	0	0	0	78

Course	Campus					Total
	NE	NW	SE	SO	TR	
GEOL-1401	22	141	0	0	0	163
GEOL-1403	319	141	225	235	125	1045
GEOL-1404	75	18	105	72	40	310
GEOL-1445	22	25	24	0	0	71
GERM-1411	35	0	0	0	0	35
GERM-1412	12	0	0	0	0	12
GERM-2311	13	0	0	0	0	13
GISC-1402	0	0	0	0	17	17
GISC-2401	0	0	0	0	17	17
GISC-2411	0	0	0	0	1	1
GISC-2420	0	0	0	0	16	16
GOVT-2305	1422	999	1512	1362	694	5989
GOVT-2306	945	698	836	958	415	3852
HALT-1301	0	31	0	0	0	31
HALT-1307	0	19	0	0	0	19
HALT-1313	0	6	0	0	0	6
HALT-1317	0	15	0	0	0	15
HALT-1333	0	9	0	0	0	9
HALT-1392	0	12	0	0	0	12
HALT-1422	0	7	0	0	0	7
HALT-2308	0	8	0	0	0	8
HALT-2315	0	14	0	0	0	14
HALT-2323	0	7	0	0	0	7
HAMG-1321	0	0	29	0	0	29
HAMG-1324	0	0	24	0	0	24
HAMG-1340	0	0	33	0	0	33
HAMG-2167	0	0	4	0	0	4
HAMG-2301	0	0	50	0	0	50
HAMG-2302	0	0	17	0	0	17
HAMG-2307	0	0	32	0	0	32
HAMG-2330	0	0	24	0	0	24
HART-1401	0	0	0	85	0	85
HART-1403	0	0	0	44	0	44
HART-1407	0	0	0	70	0	70
HART-1445	0	0	0	30	0	30
HART-2431	0	0	0	47	0	47
HART-2436	0	0	0	26	0	26
HART-2438	0	0	0	45	0	45
HART-2442	0	0	0	33	0	33
HART-2445	0	0	0	52	0	52
HART-2449	0	0	0	27	0	27
HECO-1307	145	0	0	0	0	145
HECO-1315	0	0	40	0	0	40
HECO-1322	119	0	283	76	0	478
HECO-2311	18	0	0	0	0	18
HIST-1301	1551	1137	1564	1082	739	6073
HIST-1302	821	747	809	763	524	3664
HIST-2301	47	0	57	65	75	244
HIST-2311	0	0	103	48	50	201
HIST-2321	42	119	44	0	73	278



Course	Campus					Total
	NE	NW	SE	SO	TR	
HIST-2389	0	0	0	27	0	27
HITT-1253	0	0	0	0	28	28
HITT-1401	0	0	0	0	33	33
HITT-1445	0	0	0	0	38	38
HITT-2260	0	0	0	0	14	14
HITT-2443	0	0	0	0	14	14
HPRS-1206	0	0	0	0	175	175
HPRS-2200	43	0	0	0	105	148
HPRS-2201	0	0	0	0	108	108
HRPO-1311	19	0	51	58	0	128
HRPO-2301	0	0	28	71	0	99
HUMA-1301	0	300	0	0	51	351
HUMA-1315	19	63	35	0	0	117
HYDR-1345	0	0	0	21	0	21
IFWA-2446	0	0	21	0	0	21
IMED-1416	19	0	0	0	0	19
IMED-2415	12	0	0	0	0	12
INDS-1341	0	0	19	0	0	19
INRW-0399	11	0	0	28	0	39
ITCC-1401	69	0	24	23	0	116
ITCC-1404	57	0	17	24	0	98
ITCC-2408	17	0	0	18	0	35
ITCC-2410	16	0	0	8	0	24
ITCC-2441	18	0	0	0	0	18
ITCC-2454	16	0	0	0	0	16
ITNW-1408	30	15	24	19	0	88
ITNW-1425	40	39	0	0	0	79
ITNW-1451	13	0	0	0	0	13
ITNW-1454	17	0	0	0	0	17
ITNW-1492	15	0	0	0	0	15
ITSC-1405	81	68	48	23	0	220
ITSC-1407	39	0	0	22	0	61
ITSC-1425	88	24	39	20	0	171
ITSE-1411	14	0	0	46	0	60
ITSE-1430	18	0	0	0	0	18
ITSE-1450	0	0	30	0	0	30
ITSE-2405	9	0	0	0	0	9
ITSE-2409	20	0	3	0	0	23
ITSE-2417	14	0	22	0	0	36
ITSW-1407	13	25	28	59	17	142
ITSW-1410	0	0	0	31	0	31
ITSY-1400	93	22	22	23	0	160
ITSY-2400	19	0	4	0	0	23
ITSY-2401	15	0	0	0	0	15
ITSY-2443	14	0	0	0	0	14
LBRA-1174	0	0	0	0	12	12
LBRA-1371	0	0	0	0	23	23
LBRA-1375	0	0	0	0	20	20
LGLA-1303	58	0	0	0	0	58
LGLA-1305	59	0	0	0	0	59

Course	Campus					Total
	NE	NW	SE	SO	TR	
LGLA-1307	73	0	0	0	15	88
LGLA-1345	60	0	0	0	0	60
LGLA-1353	84	0	0	0	0	84
LGLA-2281	5	0	0	0	0	5
LGLA-2303	82	0	0	0	0	82
LGLA-2311	16	0	0	0	0	16
LGLA-2380	37	0	0	0	0	37
LTCA-1311	0	0	0	0	32	32
LTCA-1312	0	0	0	0	31	31
LTCA-1313	0	0	0	0	26	26
LTCA-2314	0	0	0	0	20	20
LTCA-2315	0	0	0	0	19	19
LTCA-2661	0	0	0	0	10	10
MAIR-1449	0	0	0	45	0	45
MATH-0101	31	0	0	0	0	31
MATH-0102	61	0	0	3	7	71
MATH-0103	74	0	0	6	10	90
MATH-0104	76	0	0	8	0	84
MATH-0105	60	0	0	8	7	75
MATH-0106	59	0	0	10	11	80
MATH-0107	51	0	0	10	0	61
MATH-0108	41	0	0	11	10	62
MATH-0109	37	0	0	9	11	57
MATH-0302	853	652	823	596	400	3324
MATH-0304	660	847	899	624	412	3442
MATH-0350	1282	1206	1821	993	460	5762
MATH-1314	634	623	752	594	285	2888
MATH-1316	168	91	175	79	53	566
MATH-1324	78	67	100	28	21	294
MATH-1325	99	15	102	28	32	276
MATH-1332	20	24	0	18	0	62
MATH-1342	137	245	310	132	175	999
MATH-1350	19	43	26	44	0	132
MATH-1351	13	15	0	0	0	28
MATH-2315	10	8	25	18	0	61
MATH-2412	54	60	68	60	19	261
MATH-2414	39	12	67	12	18	148
MATH-2421	8	0	0	0	0	8
MATH-2513	75	62	104	72	20	333
MCHN-2403	0	0	0	19	0	19
MILI-0041	0	0	0	4	0	4
MILI-0042	0	0	0	2	0	2
MILI-1001	0	0	0	5	0	5
MRKG-1302	0	0	0	0	115	115
MRKG-1311	0	0	0	55	128	183
MRKG-2333	0	0	27	30	72	129
MRKG-2348	0	0	0	0	54	54
MRKG-2349	0	0	0	0	27	27
MUAP-1190	60	29	13	30	0	132
MUAP-1191	0	11	1	3	0	15

Course	Campus					Total
	NE	NW	SE	SO	TR	
MUAP-1290	41	34	34	26	0	135
MUAP-1291	8	18	4	12	0	42
MUAP-1292	4	0	0	0	0	4
MUAP-2291	3	0	0	0	0	3
MUEN-1121	0	0	0	21	0	21
MUEN-1122	19	0	19	0	0	38
MUEN-1133	12	0	16	0	0	28
MUEN-1141	41	0	0	12	0	53
MUEN-1142	0	23	0	0	0	23
MUSI-1157	9	0	0	0	0	9
MUSI-1160	11	0	0	0	0	11
MUSI-1163	13	0	11	0	0	24
MUSI-1164	3	0	0	0	0	3
MUSI-1181	32	12	41	26	0	111
MUSI-1182	0	0	6	0	0	6
MUSI-1183	12	0	0	10	0	22
MUSI-1192	20	0	11	11	0	42
MUSI-1211	23	14	0	16	0	53
MUSI-1216	20	11	0	16	0	47
MUSI-1301	146	11	66	24	0	247
MUSI-1306	714	243	314	252	163	1686
MUSI-1308	24	58	0	0	0	82
MUSI-1390	13	18	0	15	0	46
MUSI-1391	0	0	0	3	0	3
MUSI-2211	0	7	0	0	0	7
MUSI-2216	0	7	0	0	0	7
OSHT-1305	0	16	0	0	0	16
OSHT-1313	0	19	0	0	0	19
OSHT-2388	0	1	0	0	0	1
PBAD-1370	0	27	0	0	0	27
PHED-1101	0	0	25	0	0	25
PHED-1102	27	35	43	38	0	143
PHED-1103	0	9	16	12	0	37
PHED-1104	7	13	24	0	0	44
PHED-1105	0	24	0	0	0	24
PHED-1106	0	0	0	17	0	17
PHED-1107	41	0	39	0	23	103
PHED-1110	0	0	0	0	14	14
PHED-1111	9	8	16	0	0	33
PHED-1113	58	88	25	51	0	222
PHED-1115	13	0	0	0	0	13
PHED-1116	0	12	0	0	0	12
PHED-1117	0	7	0	0	0	7
PHED-1121	7	0	18	0	0	25
PHED-1122	12	0	12	15	0	39
PHED-1125	11	0	0	0	0	11
PHED-1128	0	7	16	13	0	36
PHED-1129	0	26	22	0	0	48
PHED-1132	0	0	0	11	0	11
PHED-1133	72	53	84	63	0	272

Course	Campus					Total
	NE	NW	SE	SO	TR	
PHED-1134	85	44	80	58	16	283
PHED-1148	37	0	35	44	13	129
PHED-1164	811	786	803	491	341	3232
PHED-1251	24	0	0	0	0	24
PHED-1252	5	0	0	0	0	5
PHED-1304	0	0	0	0	29	29
PHED-1306	0	104	0	23	20	147
PHED-1308	0	0	0	8	0	8
PHED-1338	0	48	24	20	0	92
PHED-2101	0	0	3	0	0	3
PHED-2102	4	2	5	7	0	18
PHED-2103	0	2	10	10	0	22
PHED-2104	7	6	2	0	0	15
PHED-2107	9	0	7	0	18	34
PHED-2110	0	0	0	0	4	4
PHED-2111	2	5	4	0	0	11
PHED-2113	13	16	0	6	0	35
PHED-2115	1	0	0	0	0	1
PHED-2116	0	1	0	0	0	1
PHED-2117	0	3	0	0	0	3
PHED-2121	7	0	4	0	0	11
PHED-2122	7	0	5	2	0	14
PHED-2123	0	0	2	0	0	2
PHED-2125	5	0	0	0	0	5
PHED-2128	0	10	9	5	0	24
PHED-2129	0	1	2	0	0	3
PHED-2132	0	0	0	5	0	5
PHED-2133	20	11	28	14	0	73
PHED-2134	19	7	9	14	10	59
PHED-2148	10	0	3	13	9	35
PHIL-1301	512	411	240	232	192	1587
PHIL-1304	32	178	40	201	56	507
PHIL-1316	33	0	0	19	0	52
PHIL-1317	0	9	0	0	0	9
PHIL-2303	40	30	16	53	33	172
PHIL-2306	37	87	84	27	41	276
PHTC-1300	41	0	0	0	0	41
PHTC-1353	9	0	0	0	0	9
PHTC-2343	4	0	0	0	0	4
PHTC-2349	13	0	0	0	0	13
PHYS-1401	87	62	79	98	21	347
PHYS-1402	13	0	28	0	0	41
PHYS-1403	49	0	0	0	0	49
PHYS-1404	32	0	0	30	0	62
PHYS-1415	28	0	0	0	0	28
PHYS-2425	32	18	43	21	0	114
PHYS-2426	11	0	30	0	0	41
POFI-1449	0	0	0	58	25	83
POFI-2401	0	0	0	57	0	57
POFI-2431	0	0	0	33	0	33

Course	Campus					Total
	NE	NW	SE	SO	TR	
POFT-1127	0	0	0	67	0	67
POFT-1309	0	0	0	38	0	38
POFT-1319	0	0	0	57	0	57
POFT-1321	0	0	0	74	30	104
POFT-1329	0	0	0	58	0	58
POFT-1331	0	0	0	10	0	10
POFT-2301	0	0	0	51	0	51
POFT-2312	0	0	0	59	0	59
PSTR-1401	0	0	38	0	0	38
PSYC-2301	1322	845	1003	804	616	4590
PSYC-2302	17	0	56	37	0	110
PSYC-2306	62	83	38	36	21	240
PSYC-2308	58	128	31	0	18	235
PSYC-2314	247	166	332	119	192	1056
PSYC-2315	121	0	0	67	29	217
PSYC-2316	0	31	0	0	30	61
PSYC-2319	0	0	91	0	43	134
PSYT-2165	3	0	0	0	0	3
PSYT-2301	27	0	0	0	0	27
PSYT-2321	35	0	0	0	0	35
PSYT-2339	35	0	0	0	0	35
PSYT-2345	31	0	0	0	0	31
PSYT-2370	23	0	0	0	0	23
PTHA-1201	0	0	0	0	32	32
PTHA-1321	0	0	0	0	32	32
PTHA-1431	0	0	0	0	32	32
PTHA-2260	0	0	0	0	24	24
PTHA-2261	0	0	0	0	24	24
PTHA-2409	0	0	0	0	24	24
PTHA-2431	0	0	0	0	24	24
PTRT-1307	0	0	0	11	0	11
PTRT-1313	0	0	0	10	0	10
PTRT-1317	0	0	0	13	0	13
RADR-1266	0	0	0	0	22	22
RADR-1267	0	0	0	0	1	1
RADR-1313	0	0	0	0	21	21
RADR-2301	0	0	0	0	21	21
RADR-2309	0	0	0	0	22	22
RADR-2333	0	0	0	0	21	21
RADR-2366	0	0	0	0	20	20
RBTC-1401	0	0	0	34	0	34
RBTC-1447	0	0	0	16	0	16
RDNG-0361	441	519	657	616	272	2505
RDNG-0363	64	72	171	152	52	511
RELE-1300	26	0	0	0	0	26
RELE-1311	72	0	0	0	0	72
RELE-1319	28	0	0	0	0	28
RELE-1406	73	0	0	0	0	73
RELE-2301	31	0	0	0	0	31
RNSG-1105	0	0	0	0	143	143

Course	Campus					Total
	NE	NW	SE	SO	TR	
RNSG-1193	0	0	0	0	128	128
RNSG-1293	0	0	0	0	110	110
RNSG-1413	0	0	0	0	140	140
RNSG-1441	0	0	0	0	130	130
RNSG-1443	0	0	0	0	109	109
RNSG-1460	0	0	0	0	140	140
RNSG-1461	0	0	0	0	130	130
RNSG-2201	0	0	0	0	117	117
RNSG-2208	0	0	0	0	118	118
RNSG-2260	0	0	0	0	118	118
RNSG-2261	0	0	0	0	117	117
RNSG-2461	0	0	0	0	109	109
RSPT-1101	0	0	0	0	26	26
RSPT-1166	0	0	0	0	26	26
RSPT-1429	0	0	0	0	26	26
RSPT-2133	0	0	0	0	23	23
RSPT-2210	0	0	0	0	23	23
RSPT-2266	0	0	0	0	23	23
RSPT-2405	0	0	0	0	23	23
RSTO-1304	0	0	20	0	0	20
RSTO-1306	0	0	36	0	0	36
RSTO-1325	0	0	29	0	0	29
RTVB-1150	20	0	0	0	0	20
RTVB-1402	39	0	0	0	0	39
RTVB-1409	26	0	0	0	0	26
RTVB-1425	38	0	0	0	0	38
RTVB-2265	2	0	0	0	0	2
RTVB-2347	24	0	0	0	0	24
RTVB-2430	13	0	0	0	0	13
RTVB-2487	6	0	0	0	0	6
SCWK-2305	33	0	0	0	0	33
SLNG-1215	0	0	0	0	60	60
SLNG-1347	0	0	0	0	59	59
SLNG-1350	0	0	0	0	30	30
SLNG-1404	0	0	0	0	81	81
SLNG-1444	0	0	0	0	76	76
SLNG-2166	0	0	0	0	29	29
SLNG-2402	0	0	0	0	30	30
SLPS-1371	0	28	0	0	0	28
SLPS-2288	0	1	0	0	0	1
SLPS-2371	0	30	0	0	0	30
SOCI-1301	722	626	892	272	455	2967
SOCI-1306	13	0	42	0	87	142
SOCI-2301	0	0	92	30	25	147
SOCI-2336	19	0	42	0	14	75
SOCW-2361	33	18	37	0	0	88
SPAN-1100	15	0	0	0	0	15
SPAN-1411	325	240	254	193	125	1137
SPAN-1412	124	59	37	35	48	303
SPAN-2106	7	0	0	0	0	7

Course	Campus					Total
	NE	NW	SE	SO	TR	
SPAN-2311	114	98	60	74	16	362
SPAN-2312	26	0	0	21	19	66
SPCH-1144	15	0	0	0	0	15
SPCH-1311	1583	977	974	642	636	4812
SPCH-1315	192	51	65	0	167	475
SPCH-1318	42	174	50	85	0	351
SPCH-1321	481	147	377	132	294	1431
SPCH-2144	3	0	0	0	0	3
SPCH-2333	0	0	0	26	0	26
SRGT-1266	0	0	0	0	29	29
SRGT-1405	0	0	0	0	29	29
SRGT-1409	0	0	0	0	29	29
STSC-0111	1826	1046	1773	1438	1001	7084
TECA-1303	26	0	0	17	0	43
TECA-1311	25	0	0	0	0	25
TECA-1318	29	0	0	0	0	29
TECA-1354	72	0	0	48	0	120
WLDG-1412	0	0	0	47	0	47
WLDG-1428	0	0	0	43	0	43
WLDG-1430	0	0	0	43	0	43
WLDG-1434	0	0	0	34	0	34
<b>TOTAL</b>	<b>39888</b>	<b>29434</b>	<b>34110</b>	<b>27053</b>	<b>18708</b>	<b>149193</b>

# Section V

## IPEDS Race & Ethnicity Data

**Section V contains race/ethnicity data of a format similar to earlier Statistical Handbooks. For Tables 14 through 19, the race/ethnicity Hispanic was defined as anyone with the *Colleague* field of Ethnics (see Tables 3 to 8) equal to Hispanic/Latino. Tables 3 through 8 in Section II contain the raw data for the categories of race and ethnicity. The data in this section may not be the correct categories for all applications (e.g. grant proposals).**

### LIMITATIONS OF STATISTICAL HANDBOOK DATA

**Section V contains data on TCCD credit students for Fall 2012 (does not include Continuing Education students). This section is based on data from the *Colleague* system. Minor differences are to be expected between *Colleague* reports that are run at different times; thus, this data may vary slightly from other *Colleague* reports.**

**Minor differences are to be expected between the data in this section and the certified state reports.**



**Table 14. 2012FL Race/Ethnicity by Gender TCCD District**

This page contains ethnicity data of a format similar to earlier Statistical Handbooks. For this table, the race/ethnicity Hispanic was defined as anyone with Ethnicity (see Table 3) equal to Hispanic/Latino. The data in this table may not be the correct categories for all applications (e.g. grant proposals).

Race/Ethnicity		Gender		Total
		Female	Male	
(Blank)	Count	65	75	140
	% within Race	46.40%	53.60%	100.00%
	% within Gender	0.20%	0.40%	0.30%
American/Alaska Native	Count	148	115	263
	% within Race	56.30%	43.70%	100.00%
	% within Gender	0.50%	0.60%	0.50%
Asian	Count	1600	1335	2935
	% within Race	54.50%	45.50%	100.00%
	% within Gender	5.40%	6.50%	5.80%
Black or African American	Count	6124	3323	9447
	% within Race	64.80%	35.20%	100.00%
	% within Gender	20.60%	16.10%	18.70%
Hawaiian/Pacific Islander	Count	45	46	91
	% within Race	49.50%	50.50%	100.00%
	% within Gender	0.20%	0.20%	0.20%
Hispanic/Latino	Count	7732	5155	12887
	% within Race	60.00%	40.00%	100.00%
	% within Gender	26.00%	24.90%	25.50%
International	Count	261	179	440
	% within Race	59.30%	40.70%	100.00%
	% within Gender	0.90%	0.90%	0.90%
Multi	Count	324	229	553
	% within Race	58.60%	41.40%	100.00%
	% within Gender	1.10%	1.10%	1.10%
Race Unknown	Count	232	160	392
	% within Race	59.20%	40.80%	100.00%
	% within Gender	0.80%	0.80%	0.80%
White	Count	13213	10078	23291
	% within Race	56.70%	43.30%	100.00%
	% within Gender	44.40%	48.70%	46.20%
Total	Count	29744	20695	50439
	% within Race	59.00%	41.00%	100.00%
	% within Gender	100.00%	100.00%	100.00%

**Table 15. 2012FL Race/Ethnicity by Gender SO Campus**

This page contains ethnicity data of a format similar to earlier Statistical Handbooks. For this table, the race/ethnicity Hispanic was defined as anyone with Ethnicity (see Table 4) equal to Hispanic/Latino. The data in this table may not be the correct categories for all applications (e.g. grant proposals).

Race/Ethnicity		Gender		Total
		Female	Male	
(Blank)	Count	20	15	35
	% within Race	57.1%	42.9%	100.0%
	% within Gender	.3%	.3%	.3%
American/Alaska Native	Count	40	23	63
	% within Race	63.5%	36.5%	100.0%
	% within Gender	.5%	.5%	.5%
Asian	Count	254	217	471
	% within Race	53.9%	46.1%	100.0%
	% within Gender	3.3%	4.4%	3.7%
Black or African American	Count	2246	1133	3379
	% within Race	66.5%	33.5%	100.0%
	% within Gender	29.3%	23.1%	26.9%
Hawaiian/Pacific Islander	Count	12	6	18
	% within Race	66.7%	33.3%	100.0%
	% within Gender	.2%	.1%	.1%
Hispanic/Latino	Count	1910	1263	3173
	% within Race	60.2%	39.8%	100.0%
	% within Gender	24.9%	25.8%	25.2%
International	Count	48	44	92
	% within Race	52.2%	47.8%	100.0%
	% within Gender	.6%	.9%	.7%
Multi	Count	67	48	115
	% within Race	58.3%	41.7%	100.0%
	% within Gender	.9%	1.0%	.9%
Race Unknown	Count	65	41	106
	% within Race	61.3%	38.7%	100.0%
	% within Gender	.8%	.8%	.8%
White	Count	3009	2113	5122
	% within Race	58.7%	41.3%	100.0%
	% within Gender	39.2%	43.1%	40.7%
Total	Count	7671	4903	12574
	% within Race	61.0%	39.0%	100.0%
	% within Gender	100.0%	100.0%	100.0%

**Table 16. 2012FL Race/Ethnicity by Gender NE Campus**

This page contains ethnicity data of a format similar to earlier Statistical Handbooks. For this table, the race/ethnicity Hispanic was defined as anyone with Ethnicity (see Table 5) equal to Hispanic/Latino. The data in this table may not be the correct categories for all applications (e.g. grant proposals).

Race/Ethnicity		Gender		Total
		Female	Male	
(Blank)	Count	11	13	24
	% within Race	45.8%	54.2%	100.0%
	% within Gender	.1%	.2%	.1%
American/Alaska Native	Count	64	36	100
	% within Race	64.0%	36.0%	100.0%
	% within Gender	.6%	.5%	.6%
Asian	Count	542	430	972
	% within Race	55.8%	44.2%	100.0%
	% within Gender	5.4%	6.2%	5.7%
Black or African American	Count	1885	952	2837
	% within Race	66.4%	33.6%	100.0%
	% within Gender	18.8%	13.8%	16.7%
Hawaiian/Pacific Islander	Count	17	25	42
	% within Race	40.5%	59.5%	100.0%
	% within Gender	.2%	.4%	.2%
Hispanic/Latino	Count	1962	1224	3186
	% within Race	61.6%	38.4%	100.0%
	% within Gender	19.5%	17.7%	18.8%
International	Count	57	47	104
	% within Race	54.8%	45.2%	100.0%
	% within Gender	.6%	.7%	.6%
Multi	Count	129	93	222
	% within Race	58.1%	41.9%	100.0%
	% within Gender	1.3%	1.3%	1.3%
Race Unknown	Count	73	59	132
	% within Race	55.3%	44.7%	100.0%
	% within Gender	.7%	.9%	.8%
White	Count	5300	4037	9337
	% within Race	56.8%	43.2%	100.0%
	% within Gender	52.8%	58.4%	55.1%
Total	Count	10040	6916	16956
	% within Race	59.2%	40.8%	100.0%
	% within Gender	100.0%	100.0%	100.0%

**Table 17. 2012FL Race/Ethnicity by Gender NW Campus**

This page contains ethnicity data of a format similar to earlier Statistical Handbooks. For this table, the race/ethnicity Hispanic was defined as anyone with Ethnicity (see Table 6) equal to Hispanic/Latino. The data in this table may not be the correct categories for all applications (e.g. grant proposals).

Race/Ethnicity		Gender		Total
		Female	Male	
(Blank)	Count	6	12	18
	% within Race	33.3%	66.7%	100.0%
	% within Gender	.1%	.2%	.1%
American/Alaska Native	Count	43	27	70
	% within Race	61.4%	38.6%	100.0%
	% within Gender	.5%	.5%	.5%
Asian	Count	325	238	563
	% within Race	57.7%	42.3%	100.0%
	% within Gender	3.9%	4.5%	4.1%
Black or African American	Count	1312	576	1888
	% within Race	69.5%	30.5%	100.0%
	% within Gender	15.7%	11.0%	13.9%
Hawaiian/Pacific Islander	Count	14	7	21
	% within Race	66.7%	33.3%	100.0%
	% within Gender	.2%	.1%	.2%
Hispanic/Latino	Count	2281	1364	3645
	% within Race	62.6%	37.4%	100.0%
	% within Gender	27.3%	26.0%	26.8%
International	Count	54	43	97
	% within Race	55.7%	44.3%	100.0%
	% within Gender	.6%	.8%	.7%
Multi	Count	90	50	140
	% within Race	64.3%	35.7%	100.0%
	% within Gender	1.1%	1.0%	1.0%
Race Unknown	Count	73	28	101
	% within Race	72.3%	27.7%	100.0%
	% within Gender	.9%	.5%	.7%
White	Count	4157	2909	7066
	% within Race	58.8%	41.2%	100.0%
	% within Gender	49.8%	55.4%	51.9%
Total	Count	8355	5254	13609
	% within Race	61.4%	38.6%	100.0%
	% within Gender	100.0%	100.0%	100.0%

**Table 18. 2012FL Race/Ethnicity by Gender SE Campus**

This page contains ethnicity data of a format similar to earlier Statistical Handbooks. For this table, the race/ethnicity Hispanic was defined as anyone with Ethnicity (see Table 7) equal to Hispanic/Latino. The data in this table may not be the correct categories for all applications (e.g. grant proposals).

Race/Ethnicity		Gender		Total
		Female	Male	
(Blank)	Count	36	39	75
	% within Race	48.0%	52.0%	100.0%
	% within Gender	.4%	.7%	.5%
American/Alaska Native	Count	36	33	69
	% within Race	52.2%	47.8%	100.0%
	% within Gender	.4%	.6%	.5%
Asian	Count	679	583	1262
	% within Race	53.8%	46.2%	100.0%
	% within Gender	7.9%	10.0%	8.8%
Black or African American	Count	2326	1291	3617
	% within Race	64.3%	35.7%	100.0%
	% within Gender	27.2%	22.1%	25.1%
Hawaiian/Pacific Islander	Count	14	13	27
	% within Race	51.9%	48.1%	100.0%
	% within Gender	.2%	.2%	.2%
Hispanic/Latino	Count	1972	1341	3313
	% within Race	59.5%	40.5%	100.0%
	% within Gender	23.1%	23.0%	23.0%
International	Count	107	74	181
	% within Race	59.1%	40.9%	100.0%
	% within Gender	1.3%	1.3%	1.3%
Multi	Count	104	59	163
	% within Race	63.8%	36.2%	100.0%
	% within Gender	1.2%	1.0%	1.1%
Race Unknown	Count	72	49	121
	% within Race	59.5%	40.5%	100.0%
	% within Gender	.8%	.8%	.8%
White	Count	3207	2355	5562
	% within Race	57.7%	42.3%	100.0%
	% within Gender	37.5%	40.3%	38.7%
Total	Count	8553	5837	14390
	% within Race	59.4%	40.6%	100.0%
	% within Gender	100.0%	100.0%	100.0%

**Table 19. 2012FL Race/Ethnicity by Gender TR Campus**

This page contains ethnicity data of a format similar to earlier Statistical Handbooks. For this table, the race/ethnicity Hispanic was defined as anyone with Ethnicity (see Table 8) equal to Hispanic/Latino. The data in this table may not be the correct categories for all applications (e.g. grant proposals).

Race/Ethnicity		Gender		Total
		Female	Male	
(Blank)	Count	3	6	9
	% within Race	33.3%	66.7%	100.0%
	% within Gender	.1%	.2%	.1%
American/Alaska Native	Count	32	13	45
	% within Race	71.1%	28.9%	100.0%
	% within Gender	.6%	.4%	.5%
Asian	Count	227	134	361
	% within Race	62.9%	37.1%	100.0%
	% within Gender	4.2%	4.6%	4.3%
Black or African American	Count	1076	466	1542
	% within Race	69.8%	30.2%	100.0%
	% within Gender	19.7%	15.8%	18.3%
Hawaiian/Pacific Islander	Count	6	2	8
	% within Race	75.0%	25.0%	100.0%
	% within Gender	.1%	.1%	.1%
Hispanic/Latino	Count	1775	1036	2811
	% within Race	63.1%	36.9%	100.0%
	% within Gender	32.5%	35.2%	33.4%
International	Count	63	20	83
	% within Race	75.9%	24.1%	100.0%
	% within Gender	1.2%	.7%	1.0%
Multi	Count	49	28	77
	% within Race	63.6%	36.4%	100.0%
	% within Gender	.9%	1.0%	.9%
Race Unknown	Count	38	20	58
	% within Race	65.5%	34.5%	100.0%
	% within Gender	.7%	.7%	.7%
White	Count	2196	1217	3413
	% within Race	64.3%	35.7%	100.0%
	% within Gender	40.2%	41.4%	40.6%
Total	Count	5465	2942	8407
	% within Race	65.0%	35.0%	100.0%
	% within Gender	100.0%	100.0%	100.0%

# Section VI

## Other Student & Enrollment Data

### LIMITATIONS OF STATISTICAL HANDBOOK DATA

**Section VI contains data on TCCD credit students for Fall 2012 (does not include Continuing Education students). This section is based on data from the *Colleague* system. Minor differences are to be expected between *Colleague* reports that are run at different times; thus, this data may vary slightly from other *Colleague* reports.**

**Minor differences are to be expected between the data in this section and the certified state reports.**

**Table 20a. 2012FL Developmental Education Courses by Campus**

Course	Campus					Total
	NE	NW	SE	SO	TR	
ENGL-0324	548	437	516	442	214	2157
ENGL-0325	145	189	274	125	99	832
ESOL-0301	3	0	9	0	0	12
ESOL-0302	6	0	0	0	0	6
ESOL-0303	0	0	21	0	0	21
ESOL-0304	4	0	10	0	0	14
ESOL-0305	3	0	0	0	0	3
ESOL-0306	0	0	18	0	0	18
ESOL-0307	2	0	16	0	0	18
ESOL-0308	0	0	14	0	0	14
ESOL-0309	3	0	18	0	0	21
ESOL-0310	1	0	10	0	0	11
ESOL-0311	0	0	11	0	0	11
ESOL-0312	0	0	15	0	0	15
INRW-0399	11	0	0	28	0	39
MATH-0101	31	0	0	0	0	31
MATH-0102	61	0	0	3	7	71
MATH-0103	74	0	0	6	10	90
MATH-0104	76	0	0	8	0	84
MATH-0105	60	0	0	8	7	75
MATH-0106	59	0	0	10	11	80
MATH-0107	51	0	0	10	0	61
MATH-0108	41	0	0	11	10	62
MATH-0109	37	0	0	9	11	57
MATH-0302	853	652	823	596	400	3324
MATH-0304	660	847	899	624	412	3442
MATH-0350	1282	1206	1821	993	460	5762
RDNG-0361	441	519	657	616	272	2505
RDNG-0363	64	72	171	152	52	511
STSC-0111	1826	1046	1773	1438	1001	7084
<b>Total</b>	<b>6342</b>	<b>4968</b>	<b>7076</b>	<b>5079</b>	<b>2966</b>	<b>26431</b>



**Table 20b. 2012FL Dev. Education Unduplicated Headcount by Campus**

Campus		Developmental Education
NE	Count	4219
	% within Dev. Education	24.0%
NW	Count	3487
	% within Dev. Education	19.8%
SE	Count	4628
	% within Dev. Education	26.3%
SO	Count	3293
	% within Dev. Education	18.7%
TR	Count	1945
	% within Dev. Education	11.1%
Total	Count	17572
	% within Dev. Education	100.0%

For TCCD district as a whole, there were 16,797 unduplicated students taking developmental education for 2012FL.

Tables 21a and 21b contain enrollments/headcount in either the Dual Credit Program or the Early High School Enrollment Program or both.

**Table 21a. 2012FL Dual Credit Enrollments by Campus**

Campus		Dual Credit
NE	Count	2248
	% within Dual Credit	29.1%
NW	Count	1938
	% within Dual Credit	25.1%
SE	Count	1950
	% within Dual Credit	25.3%
SO	Count	943
	% within Dual Credit	12.2%
TR	Count	639
	% within Dual Credit	8.3%
Total	Count	7718
	% within Dual Credit	100.0%

**Table 21b. 2012FL Dual Credit Unduplicated Headcount by Campus**

Campus		Dual Credit
NE	Count	1124
	% within Dual Credit	25.3%
NW	Count	1018
	% within Dual Credit	22.9%
SE	Count	1413
	% within Dual Credit	31.8%
SO	Count	535
	% within Dual Credit	12.0%
TR	Count	351
	% within Dual Credit	7.9%
Total	Count	4441
	% within Dual Credit	100.0%

For TCCD as a whole, there were 4,410 unduplicated students taking dual credit for 2012FL.

**Table 22a. 2012FL Distance Learning Enrollments by Campus**

Campus		Instructional Method				Total
		CD1	LA1	TV1	VCT	
NE	Count	5146	0	554	0	5700
	% within Instructional Method	24.2%	.0%	30.9%	.0%	24.7%
NW	Count	6529	0	200	0	6729
	% within Instructional Method	30.7%	.0%	11.2%	.0%	29.2%
SE	Count	3465	13	0	0	3478
	% within Instructional Method	16.3%	100.0%	.0%	.0%	15.1%
SO	Count	4278	0	1037	1	5316
	% within Instructional Method	20.1%	.0%	57.9%	100.0%	23.1%
TR	Count	1829	0	0	0	1829
	% within Instructional Method	8.6%	.0%	.0%	.0%	7.9%
Total	Count	21247	13	1791	1	23052
	% within Instructional Method	100.0%	100.0%	100.0%	100.0%	100.0%

**Table 22b. 2012FL Distance Learning Unduplicated Headcount by Campus**

Campus		Distance Learning
NE	Count	4646
	% within Distance Learning	24.4%
NW	Count	5320
	% within Distance Learning	28.0%
SE	Count	3078
	% within Distance Learning	16.2%
SO	Count	4291
	% within Distance Learning	22.6%
TR	Count	1688
	% within Distance Learning	8.9%
Total	Count	19023
	% within Distance Learning	100.0%

For TCCD district as a whole, there were 12,293 unduplicated students taking distance learning for 2012FL.

**Table 23. 2012FL Percentage of Sections Taught by Adjunct & Full-time Faculty**

Sections listed for: 2012FL

Campus	Total Sections	Sections Taught by Adjunct	Sections Taught by Full-time	% of Sections Taught by Adjunct	% of Sections Taught by Full-time
District	7,203	3,438	3,765	47.73%	52.27%
Northeast	2,096	1,064	1,032	50.76%	49.24%
Northwest	1,421	655	766	46.09%	53.91%
Southeast	1,468	685	783	46.66%	53.34%
South	1,361	611	750	44.89%	55.11%
Trinity River	857	423	434	49.36%	50.64%

Notes: This report was run on the *Colleague* system using the semester as defined by the *Colleague* field Term.

This report may differ from other *Colleague* reports with different run time/dates. The data in Table 23 is based on an XPAF run made 9/13/2012.

**Table 24. Ratio Comparison of 2012FL data to 2011FL data**

<b>TERM: 2011FL</b>		<b>CREDIT STUDENTS - ALL ENROLLMENTS</b>		
<i>Colleague XUHS run on 09/15/11 at 05:38:52.</i>				
<b>CAMPUS</b>	<b>HEADCOUNT</b>	<b>NUMBER OF ENROLLMENTS</b>	<b>CONTACT HOURS</b>	<b>SEMESTER HOURS</b>
Northeast	17,032	43,271	2,203,956	118,161
Northwest	13,669	31,504	1,608,736	88,027
Southeast	14,945	37,720	1,877,456	104,090
South	12,123	28,386	1,465,088	78,998
Trinity River	7,229	17,694	926,720	46,535
<b>TOTAL</b>	<b>64,998</b>	<b>158,575</b>	<b>8,081,956</b>	<b>435,811</b>
TCCD (Undupl)	50,062			

<b>TERM: 2012FL</b>		<b>CREDIT STUDENTS - ALL ENROLLMENTS</b>		
<i>Colleague XUHS run on 09/13/12 at 05:15:31.</i>				
<b>CAMPUS</b>	<b>HEADCOUNT</b>	<b>NUMBER OF ENROLLMENTS</b>	<b>CONTACT HOURS</b>	<b>SEMESTER HOURS</b>
Northeast	16,956	43,468	2,185,216	118,354
Northwest	13,609	31,369	1,577,056	86,904
Southeast	14,390	36,963	1,806,880	100,514
South	12,574	29,069	1,488,312	80,823
Trinity River	8,407	19,908	1,061,098	54,454
<b>TOTAL</b>	<b>65,936</b>	<b>160,777</b>	<b>8,118,562</b>	<b>441,049</b>
TCCD (Undupl)	50,439			

<b>2012FL/2011FL RATIOS</b>				
<b>CAMPUS</b>	<b>HEADCOUNT</b>	<b>NUMBER OF ENROLLMENTS</b>	<b>CONTACT HOURS</b>	<b>SEMESTER HOURS</b>
Northeast	0.996	1.005	0.991	1.002
Northwest	0.996	0.996	0.980	0.987
Southeast	0.963	0.980	0.962	0.966
South	1.037	1.024	1.016	1.023
Trinity River	1.163	1.125	1.145	1.170
<b>TOTAL</b>	<b>1.014</b>	<b>1.014</b>	<b>1.005</b>	<b>1.012</b>
TCCD (Undupl)	1.008			

<b>PERCENT INCREASE/DECREASE</b>				
<b>CAMPUS</b>	<b>HEADCOUNT</b>	<b>NUMBER OF ENROLLMENTS</b>	<b>CONTACT HOURS</b>	<b>SEMESTER HOURS</b>
Northeast	-0.4%	0.5%	-0.9%	0.2%
Northwest	-0.4%	-0.4%	-2.0%	-1.3%
Southeast	-3.7%	-2.0%	-3.8%	-3.4%
South	3.7%	2.4%	1.6%	2.3%
Trinity River	16.3%	12.5%	14.5%	17.0%
<b>TOTAL</b>	<b>1.4%</b>	<b>1.4%</b>	<b>0.5%</b>	<b>1.2%</b>
TCCD (Undupl)	0.8%			

**Table 25a. 2012FL Weekend College Enrollments by Campus**

		Instructional Method							Total	
			BL1	CA1	HL1	IN1	LA1	LE1	PR1	
NE	Count	46	164	121	0	6	295	1731	2	2365
	% within Instructional Method	100.0%	100.0%	100.0%	.0%	100.0%	31.6%	20.7%	100.0%	24.5%
NW	Count	0	0	0	0	0	190	2806	0	2996
	% within Instructional Method	.0%	.0%	.0%	.0%	.0%	20.4%	33.6%	.0%	31.1%
SE	Count	0	0	0	0	0	112	1321	0	1433
	% within Instructional Method	.0%	.0%	.0%	.0%	.0%	12.0%	15.8%	.0%	14.9%
SO	Count	0	0	0	22	0	229	1406	0	1657
	% within Instructional Method	.0%	.0%	.0%	100.0%	.0%	24.5%	16.8%	.0%	17.2%
TR	Count	0	0	0	0	0	107	1088	0	1195
	% within Instructional Method	.0%	.0%	.0%	.0%	.0%	11.5%	13.0%	.0%	12.4%
Total	Count	46	164	121	22	6	933	8352	2	9646
	% within Instructional Method	100.0%	100.0%	100.0%	100.0%	100.0%	100.0%	100.0%	100.0%	100.0%

**Table 25b. 2012FL Weekend College Unduplicated Headcount by Campus**

Campus		Weekend College
NE	Count	1845
	% within Weekend College	24.7%
NW	Count	2203
	% within Weekend College	29.5%
SE	Count	1175
	% within Weekend College	15.7%
SO	Count	1295
	% within Weekend College	17.4%
TR	Count	943
	% within Weekend College	12.6%
Total	Count	7461
	% within Weekend College	100.0%

For TCCD district as a whole, there were 7,139 unduplicated students taking weekend college courses for 2012FL.