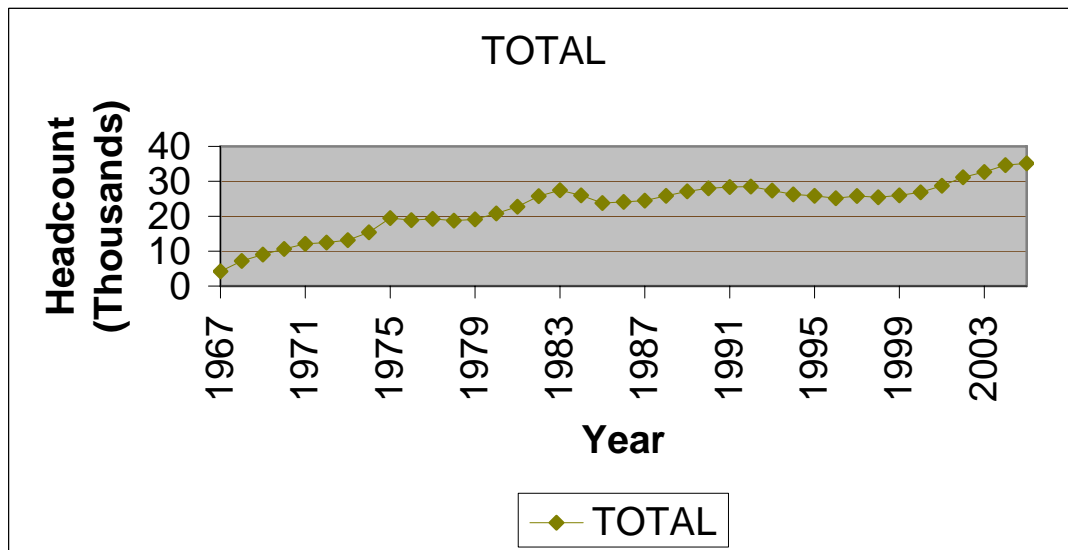


STATISTICAL HANDBOOK

2005FL

HEADCOUNT ENROLLMENTS FALL SEMESTERS -- 1967 – PRESENT



Office of Institutional Research

Tarrant County College

Table of Contents

TCCD 2005 Fall Semester Statistical Handbook

	Page
Introduction	1
Section I: Historical Data	2
Table 1. Headcount and Full-Time Equivalent	3
Figure 1. Headcount Enrollments by Campus, Fall Semesters	4
Section II: Demographic Data	5
Table	
2. 2005 Fall Headcount, Enrollments, Contact Hours, and Semester Hours	6
3. 2005 Fall - Ethnicity by Gender – District	7
4. 2005 Fall – Ethnicity by Gender – South	8
5. 2005 Fall – Ethnicity by Gender – Northeast	9
6. 2005 Fall – Ethnicity by Gender – Northwest	10
7. 2005 Fall – Ethnicity by Gender – Southeast	11
8. Average Age by Campus – Separated by Age Group	12
8a. Average Age by Campus – Mean	12
9. Students by Zip Code	13
10. Full/Part Time for District	16
11. Full/Part Time by Campus	16
Section III: Course Enrollments by Department by Campus	17
Table	
12. Enrollments by Department	18
Section IV: Course Enrollments by Course Number by Campus	21
Table	
13. Enrollments by Course	22

INTRODUCTION

This statistical handbook contains data on TCCD credit students for Fall 2005. It does not include Continuing Education students.

Table 2 contains information related to the source of the data in this report and how the data in this report relates to data in other reports such as the certified state reports. Minor differences are to be expected between Datatel/*Colleague* reports that are run at different times; this data may vary slightly from other Datatel/*Colleague* reports. Audit enrollments are included in this report.

If there are questions about this statistical handbook, please contact the TCCD Office of Institutional Research.

Section I

HISTORICAL DATA

LIMITATIONS OF STATISTICAL HANDBOOK DATA

Section I contains data on TCCD credit students for Fall 2005 (does not include Continuing Education students).

This section is based on data collected from the Datatel/*Colleague* system for all semesters beginning in the year 2004. All data identified which is prior to 2004 was collected utilizing the Legacy system. Minor differences are to be expected between Datatel/*Colleague* reports that are run at different times; thus this data may vary slightly from other Datatel/*Colleague* reports.

Minor differences are to be expected between the data in this section and the certified state reports.

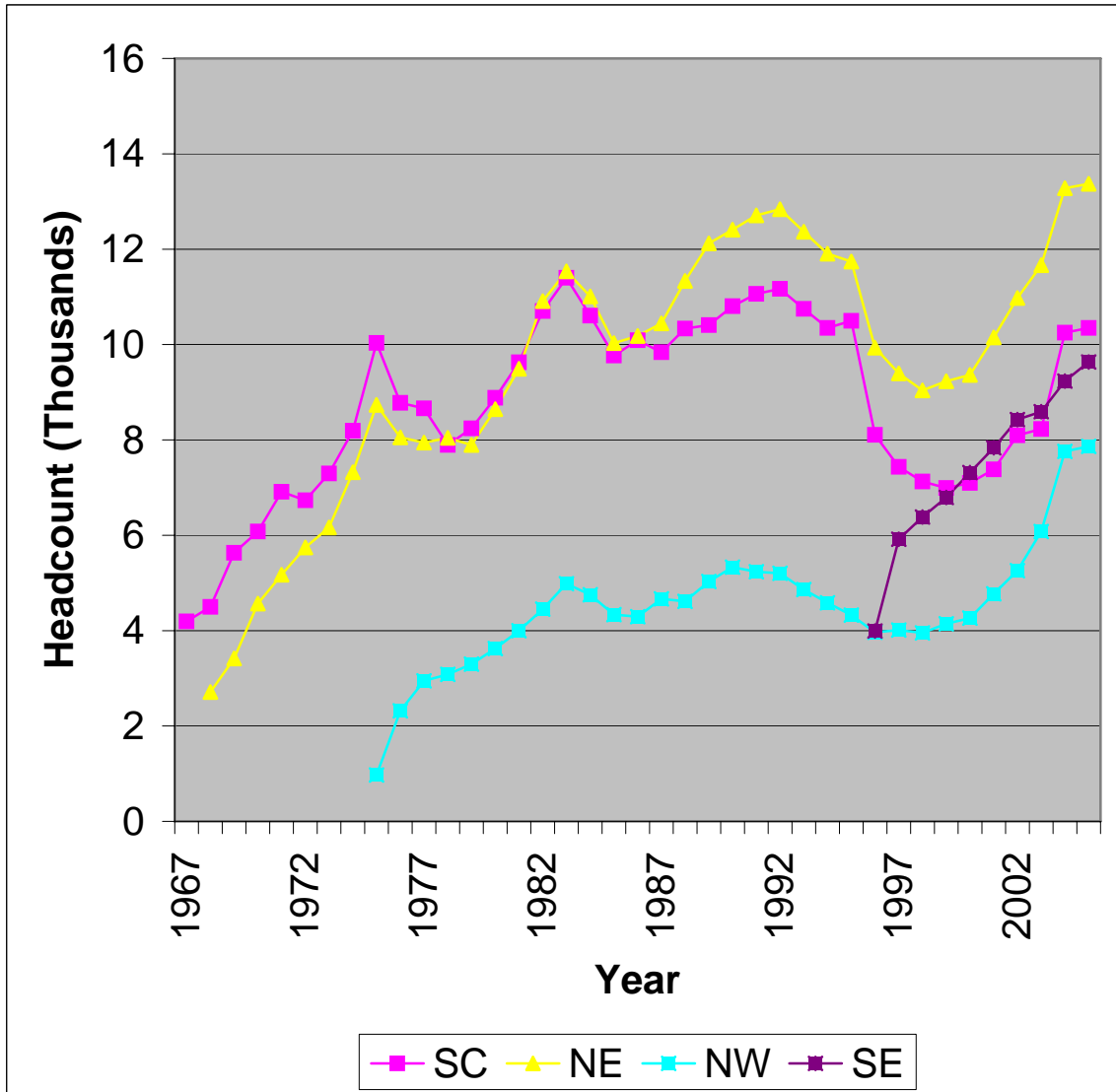
**TABLE 1--FALL SEMESTERS
HEADCOUNT AND FULL-TIME EQUIVALENT**

YEAR	District Total	Campus Totals		South			Northeast			Northwest			Southeast		
		HC	FTE	HC	FTE	% of Total	HC	FTE	% of Total	HC	FTE	% of Total	HC	FTE	% of Total
1976-77	18899	19148	11459	8776	5357	46.75	8053	4741	41.37	2319	1361	11.88			
1977-78	19257	19554	11323	8663	5086	44.92	7945	4540	40.10	2946	1697	14.99			
1978-79	18745	19018	10302	7895	4314	41.88	8042	4304	41.78	3081	1684	16.35			
1979-80	19085	19432	10375	8243	4458	42.97	7893	4158	40.08	3296	1759	16.95			
1980-81	20798	21152	11124	8883	4709	42.33	8644	4504	40.49	3625	1911	17.18			
1981-82	22731	23117	12035	9627	5036	41.84	9493	4936	41.01	3997	2063	17.14			
1982-83	25746	26163	13704	10703	5615	40.97	10910	5699	41.59	4550	2390	17.44			
1983-84	27452	27919	14398	11401	5930	41.19	11535	5905	41.01	4983	2563	17.80			
1984-85	25990	26369	13257	10606	5386	40.63	11010	5490	41.41	4753	2381	17.96			
1985-86	23783	24135	12408	9768	5011	40.39	10030	5193	41.85	4337	2204	17.76			
1986-87	24092	24562	12726	10090	5110	40.15	10178	5422	42.61	4294	2194	17.24			
1987-88	24490	24949	12989	9839	5004	38.52	10445	5588	43.02	4665	2397	18.45			
1988-89	25857	26280	13746	10334	5247	38.17	11333	6077	44.21	4613	2422	17.62			
1989-90	27109	27559	14339	10409	5337	37.22	12120	6409	44.70	5030	2593	18.08			
1990-91	27999	28546	15082	10804	5643	37.42	12410	6669	44.22	5332	2770	18.37			
1991-92	28349	29009	15332	11064	5702	37.19	12711	6888	44.93	5234	2742	17.88			
1992-93	28515	29211	15624	11168	5857	37.49	12840	7020	44.93	5203	2747	17.58			
1993-94	27352	27977	15075	10749	5680	37.68	12367	6802	45.12	4861	2593	17.20			
1994-95	26253	26838	14387	10349	5474	38.05	11906	6456	44.87	4583	2457	17.08			
1995-96	25850	26565	14186	10496	5559	39.19	11742	6290	44.34	4327	2337	16.47			
1996-97	25174	25998	13857	8106	4333	31.27	9935	5323	38.41	3964	2128	15.36	3993	2073	14.96
1997-98	25779	26762	14380	7436	3946	27.44	9397	5040	35.05	4013	2168	15.08	5916	3226	22.43
1998-99	25432	26501	14828	7128	3943	26.59	9038	5066	34.17	3951	2158	14.55	6384	3661	24.69
1999-00	25980	27159	15168	6991	3859	25.44	9230	5140	33.89	4145	2288	15.08	6793	3881	25.59
2000-01	26836	28038	15740	7097	3933	24.99	9364	5249	33.35	4263	2366	15.03	7314	4192	26.63
2001-02	28751	30139	17066	7383	4195	24.58	10149	5737	33.62	4772	2620	15.35	7835	4514	26.45
2002-03	31169	32755	18479	8096	4615	24.97	10975	6138	33.22	5259	2912	15.76	8425	4814	26.05
2003-04	32657	34562	19388	8229	4588	23.66	11663	6505	33.55	6077	3354	17.30	8593	4941	25.48
2004-05	34642	40519	20402	10248	5096	24.98	13279	6712	32.90	7757	3674	18.01	9235	4920	24.12
2005-06	35163	41219	20509	10348	5057	24.66	13370	6693	32.63	7866	3717	18.12	9635	5042	24.58

Note: District total represents unduplicated headcount

Figure 1. Headcount Enrollments by Campus, Fall Semesters

Fall 1967 to Fall 2005



Section II

DEMOGRAPHIC DATA

LIMITATIONS OF STATISTICAL HANDBOOK DATA

Section II contains data on TCCD credit students for Fall 2005 (does not include Continuing Education students). This section is based on data from the Datatel/*Colleague* system. Minor differences are to be expected between Datatel/*Colleague* reports that are run at different times; thus this data may vary slightly from other Datatel/*Colleague* reports.

Minor differences are to be expected between the data in this section and the certified state reports.

Table 2. 2005FL Headcount, Enrollments, Contact Hours, and Semester Hours

UG CONTACT HOURS AND HEADCOUNT

TERM: 2005FL

CAMPUS	HEADCOUNT	CREDIT STUDENTS		SEMESTER HOURS	FTE
		NUMBER OF ENROLLMENTS	CONTACT HOURS		
Northeast	13,370	36,347	1,915,024	100,394	6,692.9
Northwest	7,866	20,165	1,049,072	55,759	3,717.3
Southeast	9,635	27,296	1,382,104	75,626	5,041.7
South	10,348	26,514	1,443,776	75,850	5,056.7
Other	0	0	0	0	0.0
TOTAL (Dupl)	41,219	110,322	5,789,976	307,629	20,508.6
TCCD (Undupl)	35,163				

Notes: This report was run on the Datatel/*Colleague* system using the semester as defined by the *Colleague* field Term.

This report includes all enrollments for the *Colleague* Term (semester) as of the run time. This data will differ from some other reports that only include enrollments in classes with an ODOR (Official Day of Record) on or before the official semester ODOR (i.e. some reports exclude some "miniterm" enrollments).

This report may differ from other *Colleague* reports with different run time/dates.

This report will differ from the certified state reports. State reports use a different definition for semester.

Table 3. 2005FL Ethnicity by Gender TCCD District

		Gender		Total
		Female	Male	
White	Count	12361	9504	21865
	% within Ethnicity	56.5%	43.5%	100.0%
	% within Gender	60.8%	64.1%	62.2%
Black	Count	3183	1695	4878
	% within Ethnicity	65.3%	34.7%	100.0%
	% within Gender	15.7%	11.4%	13.9%
Hispanic	Count	3419	2443	5862
	% within Ethnicity	58.3%	41.7%	100.0%
	% within Gender	16.8%	16.5%	16.7%
Asian	Count	1020	917	1937
	% within Ethnicity	52.7%	47.3%	100.0%
	% within Gender	5.0%	6.2%	5.5%
Am Ind	Count	112	87	199
	% within Ethnicity	56.3%	43.7%	100.0%
	% within Gender	.6%	.6%	.6%
Other	Count	243	177	420
	% within Ethnicity	57.9%	42.1%	100.0%
	% within Gender	1.2%	1.2%	1.2%
Total	Count	20338	14823	35161
	% within Ethnicity	57.8%	42.2%	100.0%
	% within Gender	100.0%	100.0%	100.0%

Note: Missing ethnicity data on 2 students

Table 4. 2005FL Ethnicity by Gender South Campus

		Gender		Total
		Female	Male	
White	Count	3423	2543	5966
	% within Ethnicity	57.4%	42.6%	100.0%
	% within Gender	55.9%	60.2%	57.7%
Black	Count	1317	653	1970
	% within Ethnicity	66.9%	33.1%	100.0%
	% within Gender	21.5%	15.5%	19.0%
Hispanic	Count	1090	807	1897
	% within Ethnicity	57.5%	42.5%	100.0%
	% within Gender	17.8%	19.1%	18.3%
Asian	Count	202	161	363
	% within Ethnicity	55.6%	44.4%	100.0%
	% within Gender	3.3%	3.8%	3.5%
Am Ind	Count	28	17	45
	% within Ethnicity	62.2%	37.8%	100.0%
	% within Gender	.5%	.4%	.4%
Other	Count	65	42	107
	% within Ethnicity	60.7%	39.3%	100.0%
	% within Gender	1.1%	1.0%	1.0%
Total	Count	6125	4223	10348
	% within Ethnicity	59.2%	40.8%	100.0%
	% within Gender	100.0%	100.0%	100.0%

Table 5. 2005FL Ethnicity by Gender Northeast Campus

		Gender		Total
		Female	Male	
White	Count	5507	4013	9520
	% within Ethnicity	57.8%	42.2%	100.0%
	% within Gender	69.8%	73.2%	71.2%
Black	Count	885	450	1335
	% within Ethnicity	66.3%	33.7%	100.0%
	% within Gender	11.2%	8.2%	10.0%
Hispanic	Count	931	597	1528
	% within Ethnicity	60.9%	39.1%	100.0%
	% within Gender	11.8%	10.9%	11.4%
Asian	Count	427	332	759
	% within Ethnicity	56.3%	43.7%	100.0%
	% within Gender	5.4%	6.1%	5.7%
Am Ind	Count	57	33	90
	% within Ethnicity	63.3%	36.7%	100.0%
	% within Gender	.7%	.6%	.7%
Other	Count	84	54	138
	% within Ethnicity	60.9%	39.1%	100.0%
	% within Gender	1.1%	1.0%	1.0%
Total	Count	7891	5479	13370
	% within Ethnicity	59.0%	41.0%	100.0%
	% within Gender	100.0%	100.0%	100.0%

Table 6. 2005FL Ethnicity by Gender Northwest Campus

		Gender		Total
		Female	Male	
White	Count	3138	2067	5205
	% within Ethnicity	60.3%	39.7%	100.0%
	% within Gender	66.2%	66.1%	66.2%
Black	Count	377	171	548
	% within Ethnicity	68.8%	31.2%	100.0%
	% within Gender	8.0%	5.5%	7.0%
Hispanic	Count	1003	708	1711
	% within Ethnicity	58.6%	41.4%	100.0%
	% within Gender	21.2%	22.6%	21.8%
Asian	Count	163	133	296
	% within Ethnicity	55.1%	44.9%	100.0%
	% within Gender	3.4%	4.3%	3.8%
Am Ind	Count	31	24	55
	% within Ethnicity	56.4%	43.6%	100.0%
	% within Gender	.7%	.8%	.7%
Other	Count	28	23	51
	% within Ethnicity	54.9%	45.1%	100.0%
	% within Gender	.6%	.7%	.6%
Total	Count	4740	3126	7866
	% within Ethnicity	60.3%	39.7%	100.0%
	% within Gender	100.0%	100.0%	100.0%

Table 7. 2005FL Ethnicity by Gender Southeast Campus

		Gender		Total
		Female	Male	
White	Count	2902	2252	5154
	% within Ethnicity	56.3%	43.7%	100.0%
	% within Gender	51.6%	56.1%	53.5%
Black	Count	1265	660	1925
	% within Ethnicity	65.7%	34.3%	100.0%
	% within Gender	22.5%	16.4%	20.0%
Hispanic	Count	887	599	1486
	% within Ethnicity	59.7%	40.3%	100.0%
	% within Gender	15.8%	14.9%	15.4%
Asian	Count	417	390	807
	% within Ethnicity	51.7%	48.3%	100.0%
	% within Gender	7.4%	9.7%	8.4%
Am Ind	Count	23	18	41
	% within Ethnicity	56.1%	43.9%	100.0%
	% within Gender	.4%	.4%	.4%
Other	Count	125	95	220
	% within Ethnicity	56.8%	43.2%	100.0%
	% within Gender	2.2%	2.4%	2.3%
Total	Count	5619	4014	9633
	% within Ethnicity	58.3%	41.7%	100.0%
	% within Gender	100.0%	100.0%	100.0%

Note: Missing ethnicity data on 2 students

Table 8. 2005FL Age by Campus

Age		Campus				
		NE	NW	SE	SO	Total
Under 21	Count	4886	2906	4246	3540	15578
	% within	36.5%	36.9%	44.1%	34.2%	37.8%
21 - 25	Count	3911	2223	2735	3090	11959
	% within	29.3%	28.3%	28.4%	29.9%	29.0%
26 - 30	Count	1564	975	1014	1318	4871
	% within	11.7%	12.4%	10.5%	12.7%	11.8%
31 - 35	Count	1023	651	627	823	3124
	% within	7.7%	8.3%	6.5%	8.0%	7.6%
36 - 40	Count	720	401	436	594	2151
	% within	5.4%	5.1%	4.5%	5.7%	5.2%
Over 40	Count	1266	710	577	983	3536
	% within	9.5%	9.0%	6.0%	9.5%	8.6%
Total	Count	13370	7866	9635	10348	41219
	% within	100.0%	100.0%	100.0%	100.0%	100.0%

Table 8A. 2005FL Average Age by Campus

NE	NW	SE	SO	TCCD
26.30	26.20	24.74	26.60	25.85*

* The TCCD average age of 25.85 is based on the average age of the unduplicated enrollment count of 35,163.

Table 9. 2005FL Students by ZIP Code

	Campus				Total
Zip Code	NE	NW	SE	SO	
76180	1342	216	58	159	1775
76017	194	80	930	345	1549
76137	739	553	56	136	1484
76063	139	79	983	226	1427
76248	829	366	44	131	1370
76133	140	145	74	865	1224
75052	98	54	816	118	1086
76016	165	70	474	314	1023
76179	159	722	26	85	992
76018	109	63	665	127	964
76021	726	92	28	80	926
76014	98	46	621	118	883
76028	104	78	107	592	881
76001	108	36	548	178	870
76039	646	52	48	62	808
76051	649	55	29	68	801
76116	100	304	30	347	781
76013	144	43	391	173	751
76002	83	44	523	100	750
76106	82	544	12	78	716
76010	106	35	474	95	710
76108	95	450	25	136	706
76006	264	49	283	87	683
76148	451	136	19	64	670
76132	85	113	40	407	645
76112	275	55	56	240	626
76123	89	72	51	405	617
76053	469	57	26	59	611
76015	80	30	344	110	564
76040	394	47	43	57	541
76110	60	62	19	351	492
76117	306	128	9	49	492
76012	210	32	163	80	485
76134	51	36	26	343	456
76011	128	28	245	54	455
76119	63	34	34	323	454

	Campus				Total
Zip Code	NE	NW	SE	SO	
76135	65	319	11	48	443
76126	52	161	20	206	439
76140	49	27	45	316	437
76114	57	294	14	71	436
76036	57	38	33	307	435
76034	365	31	7	23	426
76022	333	38	13	41	425
76107	76	136	21	182	415
76131	108	242	10	43	403
76020	63	272	12	52	399
76118	243	34	11	48	336
76092	293	21	4	15	333
76109	49	65	27	190	331
76262	197	65	10	33	305
76120	147	28	46	74	295
76054	234	28	8	16	286
76115	27	29	11	203	270
76111	110	89	13	56	268
75050	85	17	112	24	238
76105	33	23	20	158	234
76104	22	25	7	130	184
76103	62	22	16	76	176
76060	19	15	73	67	174
76052	50	97	3	16	166
76009	12	16	44	68	140
76058	15	15	11	85	126
76065	9	3	92	15	119
75051	15	6	72	12	105
75104	12	3	67	13	95
76008	11	46	4	30	91
76102	21	14	6	33	74
76049	11	26	3	25	65
76082	5	43	1	13	62
76247	20	32	3	6	61
76031	8	7	5	39	59
76155	36	4	12	2	54
76048	9	21	5	16	51

	Campus				Total
Zip Code	NE	NW	SE	SO	
76087	5	30	2	14	51
76078	15	29	4	1	49
76084	6	0	34	9	49
76085	3	29	4	9	45
76234	20	17	3	4	44
76127	1	34	1	4	40
76033	7	5	7	20	39
76071	11	24	0	4	39
76023	3	30	1	3	37
75062	14	8	6	4	32
75054	2	0	24	4	30
75067	19	5	2	4	30
75137	2	2	24	2	30
76096	5	3	15	6	29
76059	5	1	0	22	28
75019	14	2	4	4	24
75028	18	3	0	3	24
76050	4	5	3	12	24
76086	5	9	3	7	24
75115	2	2	15	4	23
76426	8	10	2	2	22
75154	4	1	12	4	21
75061	9	2	6	3	20
76073	7	9	2	1	19
75165	5	1	7	5	18
75249	1	1	12	3	17
75038	9	0	3	4	16
76136	3	10	0	3	16
75063	8	2	2	3	15
75077	9	5	1	0	15
Other	386	229	244	266	1125
Total	13370	7866	9635	10348	41219

** Zip Code groups with < 15 and students without Zip Codes are identified as Other.

Table 10. 2005FL Full/Part Time for TCCD

	Frequency	Percent	Valid Percent	Cumulative Percent
Part Time	22592	64.2	64.2	64.2
Full Time	12571	35.8	35.8	100.0
Total	35163	100.0	100.0	

Table 10 is the full/part time student data for the TCCD district as a whole.

Table 11. 2005FL Full/Part Time by Campus

Campus		Full/Part Time		Total
		Part Time	Full Time	
SO	Count	7924	2424	10348
	% within Campus	76.6%	23.4%	100.0%
	% within Full/Part Time	25.7%	23.3%	25.1%
NE	Count	9971	3399	13370
	% within Campus	74.6%	25.4%	100.0%
	% within Full/Part Time	32.4%	32.7%	32.4%
NW	Count	6054	1812	7866
	% within Campus	77.0%	23.0%	100.0%
	% within Full/Part Time	19.6%	17.4%	19.1%
SE	Count	6868	2767	9635
	% within Campus	71.3%	28.7%	100.0%
	% within Full/Part Time	22.3%	26.6%	23.4%
Total	Count	30817	10402	41219
	% within Campus	74.8%	25.2%	100.0%
	% within Full/Part Time	100.0%	100.0%	100.0%

Table 11 is the full/part time student data for each individual campus. For this table, only enrollments at the individual campus are considered. For example, if a student took 9 hours at SO and 3 hours at NE, the student is listed as part time at SO and part time at NE (and full time in Table 10).

Section III

Course Enrollments by Department by Campus

LIMITATIONS OF STATISTICAL HANDBOOK DATA

Section III contains data on TCCD credit students for Fall 2005 (does not include Continuing Education students). This section is based on data from the Datatel/*Colleague* system. Minor differences are to be expected between Datatel/*Colleague* reports that are run at different times; thus this data may vary slightly from other Datatel/*Colleague* reports.

Minor differences are to be expected between the data in this section and the certified state reports.

Section III excludes 9,941 enrollments in separate lab sections that are included in Section II. Section II contains 110,322 total enrollments for 2005FL. This section contains 100,381 enrollments.

Course Enrollments

Tables 12 and 13 exclude 9,941 enrollments in separate lab sections that are included in Table 2. Table 2 contains 110,322 total enrollments for 2005SP. Tables 12 and 13 contain 100,381 enrollments.

Table 12. 2005FL Enrollments by Department

Department	Campus				Total
	NE	NW	SE	SO	
ABDR	0	0	0	215	215
ACCT	533	246	470	433	1682
ACNT	122	56	16	117	311
AERM	0	823	0	0	823
AGCR	0	21	0	0	21
ANTH	36	30	130	0	196
ARCH	0	0	73	0	73
ARCT	0	0	20	0	20
ARTC	241	0	0	0	241
ARTS	1260	514	705	670	3149
AUMT	0	0	0	381	381
AVNC	0	34	0	0	34
BCIS	280	205	104	187	776
BIOL	2423	972	1342	1219	5956
BMGT	202	137	64	117	520
BUSG	35	79	16	17	147
BUSI	685	159	384	285	1513
CDEC	161	0	0	0	161
CETT	0	45	0	129	174
CHEF	0	0	130	0	130
CHEM	708	317	629	392	2046
CJLE	0	120	0	0	120
CJSA	0	47	0	0	47
CNBT	0	0	82	0	82
COMM	145	20	53	64	282
COSC	518	235	604	505	1862
CPMT	8	0	0	58	66
CRIJ	0	576	0	0	576
CRTG	0	0	35	0	35
DAAC	133	0	0	0	133
DANC	46	237	77	110	470
DFTG	0	0	0	232	232
DHYG	222	0	0	0	222
DRAM	297	238	307	231	1073
ECON	717	300	815	744	2576

Department	Campus				Total
	NE	NW	SE	SO	
EDUC	25	0	0	43	68
EECT	0	0	0	9	9
ELMT	0	14	0	0	14
EMSP	438	0	0	0	438
ENGL	3864	2316	3188	2954	12322
ENGR	0	0	131	44	175
ENTC	0	0	0	20	20
EPCT	0	34	0	0	34
ESOL	52	82	0	0	134
FDNS	0	0	191	0	191
FIRS	0	90	0	0	90
FIRT	0	103	0	0	103
FLMC	92	0	0	0	92
FREN	74	0	24	99	197
FSHN	22	0	0	0	22
GEOG	169	115	37	0	321
GEOL	372	283	481	255	1391
GERM	85	0	0	0	85
GOVT	1953	1026	1985	1793	6757
HALT	0	112	0	0	112
HAMG	0	0	38	0	38
HART	0	0	0	380	380
HECO	175	41	327	117	660
HIST	1785	1200	1597	1850	6432
HITT	46	0	0	0	46
HPRS	324	0	0	0	324
HRPO	50	18	75	66	209
HUMA	99	19	66	16	200
HYDR	0	0	0	4	4
IMED	20	0	0	0	20
INDS	0	0	17	0	17
INMT	0	5	0	22	27
ITCC	110	0	27	46	183
ITNW	48	13	31	37	129
ITSC	82	42	55	53	232
ITSE	67	16	46	68	197
ITSW	31	10	23	79	143
ITSY	47	6	62	14	129
LGLA	361	0	0	0	361
LTCA	83	0	0	0	83
MAIR	0	0	0	16	16
MATH	3502	2129	3740	2761	12132
MILI	0	0	0	19	19

Department	Campus				Total
	NE	NW	SE	SO	
MRKG	62	89	111	121	383
MTRC	0	0	0	7	7
MUAP	60	47	39	76	222
MUEN	67	10	90	38	205
MUSI	556	346	398	479	1779
OSHT	0	8	0	0	8
PBAD	0	17	0	0	17
PHED	1094	912	1025	952	3983
PHIL	459	444	330	499	1732
PHTC	26	0	0	0	26
PHYS	254	61	192	140	647
POFI	15	49	33	109	206
POFT	262	128	168	236	794
PSTR	0	0	18	0	18
PSYC	2048	1210	1234	1461	5953
PSYT	88	0	0	0	88
PTHA	93	0	0	0	93
QCTC	0	0	0	23	23
RADR	169	0	0	0	169
RBTC	0	14	0	46	60
RDNG	419	232	323	504	1478
RELE	305	0	0	0	305
RNSG	0	0	0	1010	1010
RSPT	174	0	0	0	174
RSTO	0	0	28	0	28
RTVB	107	0	0	0	107
SLNG	0	328	0	0	328
SLPS	0	9	0	0	9
SMER	0	0	0	50	50
SMFT	0	29	0	0	29
SOCI	914	533	950	509	2906
SOCW	28	0	0	0	28
SPAN	684	264	428	432	1808
SPCH	1733	773	1068	870	4444
SRGT	84	0	0	0	84
TECA	212	0	0	0	212
WLDG	0	0	0	67	67
Total	32661	18588	24632	24500	100381

Section IV

Course Enrollments by Course Number By Campus

LIMITATIONS OF STATISTICAL HANDBOOK DATA

Section IV contains data on TCCD credit students for Fall 2005 (does not include Continuing Education students). This section is based on data from the Datatel/Colleague system. Minor differences are to be expected between Datatel/Colleague reports that are run at different times; thus this data may vary slightly from other Datatel/Colleague reports.

Minor differences are to be expected between the data in this section and the certified state reports.

Section IV excludes 9,941 enrollments in separate lab sections that are included in Section II. Section II contains 110,322 total enrollments for 2005FL. This section contains 100,381 enrollments.

Table 13. 2005FL Enrollments by Course

Course	Campus				Total
	NE	NW	SE	SO	
ABDR 1207	0	0	0	34	34
ABDR 1291	0	0	0	39	39
ABDR 1419	0	0	0	34	34
ABDR 1431	0	0	0	39	39
ABDR 1555	0	0	0	40	40
ABDR 1558	0	0	0	29	29
ACCT 2301	404	205	331	310	1,250
ACCT 2302	129	41	139	123	432
ACNT 1303	0	10	0	43	53
ACNT 1311	37	19	16	29	101
ACNT 1313	35	13	0	0	48
ACNT 1331	0	0	0	31	31
ACNT 1391	27	0	0	0	27
ACNT 2303	23	14	0	0	37
ACNT 2309	0	0	0	14	14
AERM 1101	0	56	0	0	56
AERM 1191	0	61	0	0	61
AERM 1192	0	9	0	0	9
AERM 1205	0	34	0	0	34
AERM 1208	0	37	0	0	37
AERM 1240	0	35	0	0	35
AERM 1243	0	20	0	0	20
AERM 1254	0	23	0	0	23
AERM 1303	0	47	0	0	47
AERM 1310	0	38	0	0	38
AERM 1314	0	57	0	0	57
AERM 1315	0	56	0	0	56
AERM 1344	0	36	0	0	36
AERM 1345	0	35	0	0	35
AERM 1347	0	39	0	0	39
AERM 1349	0	37	0	0	37
AERM 1350	0	39	0	0	39
AERM 1351	0	33	0	0	33
AERM 1357	0	28	0	0	28

Course	Campus				Total
	NE	NW	SE	SO	
AERM 1456	0	32	0	0	32
AERM 2252	0	26	0	0	26
AERM 2351	0	18	0	0	18
AERM 2447	0	27	0	0	27
AGCR 1419	0	21	0	0	21
ANTH 2346	36	30	130	0	196
ARCH 1301	0	0	13	0	13
ARCH 1303	0	0	17	0	17
ARCH 1311	0	0	15	0	15
ARCH 1315	0	0	11	0	11
ARCH 2312	0	0	17	0	17
ARCT 1371	0	0	19	0	19
ARCT 2367	0	0	1	0	1
ARTC 1325	53	0	0	0	53
ARTC 1401	37	0	0	0	37
ARTC 1402	40	0	0	0	40
ARTC 1413	39	0	0	0	39
ARTC 1453	36	0	0	0	36
ARTC 2335	6	0	0	0	6
ARTC 2405	10	0	0	0	10
ARTC 2413	12	0	0	0	12
ARTC 2440	8	0	0	0	8
ARTS 1301	586	305	394	456	1,741
ARTS 1303	83	0	77	25	185
ARTS 1311	93	40	26	20	179
ARTS 1312	15	5	2	0	22
ARTS 1316	111	61	73	74	319
ARTS 1317	14	6	10	13	43
ARTS 1320	0	0	17	0	17
ARTS 2313	13	0	11	6	30
ARTS 2314	0	0	5	0	5
ARTS 2316	39	19	25	18	101
ARTS 2317	12	9	5	3	29
ARTS 2323	4	0	0	0	4
ARTS 2326	9	0	0	13	22
ARTS 2333	12	0	11	9	32

Course	Campus				Total
	NE	NW	SE	SO	
ARTS 2346	51	46	47	32	176
ARTS 2347	15	23	2	1	41
ARTS 2356	159	0	0	0	159
ARTS 2357	44	0	0	0	44
AUMT 1253	0	0	0	43	43
AUMT 1257	0	0	0	41	41
AUMT 1307	0	0	0	43	43
AUMT 1310	0	0	0	41	41
AUMT 1313	0	0	0	15	15
AUMT 1349	0	0	0	8	8
AUMT 1357	0	0	0	14	14
AUMT 1380	0	0	0	14	14
AUMT 2209	0	0	0	39	39
AUMT 2223	0	0	0	34	34
AUMT 2313	0	0	0	39	39
AUMT 2315	0	0	0	8	8
AUMT 2325	0	0	0	34	34
AUMT 2380	0	0	0	8	8
AVNC 1303	0	12	0	0	12
AVNC 1370	0	15	0	0	15
AVNC 1371	0	7	0	0	7
BCIS 1405	280	205	104	187	776
BIOL 1406	205	83	147	109	544
BIOL 1407	41	7	34	17	99
BIOL 1408	711	211	260	382	1,564
BIOL 1409	174	44	49	48	315
BIOL 2306	24	0	0	0	24
BIOL 2316	0	27	0	0	27
BIOL 2401	738	370	467	425	2,000
BIOL 2402	281	100	159	127	667
BIOL 2420	249	130	226	111	716
BMGT 1268	0	15	0	0	15
BMGT 1270	0	16	0	0	16
BMGT 1301	22	0	14	0	36
BMGT 1303	151	19	50	100	320
BMGT 1305	20	16	0	10	46

Course	Campus				Total
	NE	NW	SE	SO	
BMGT 1382	2	0	0	0	2
BMGT 2172	0	15	0	0	15
BMGT 2188	0	16	0	0	16
BMGT 2309	7	9	0	7	23
BMGT 2473	0	15	0	0	15
BMGT 2574	0	16	0	0	16
BUSG 1302	25	0	0	0	25
BUSG 1315	0	24	0	0	24
BUSG 1341	0	24	0	0	24
BUSG 2170	10	0	0	0	10
BUSG 2300	0	5	16	17	38
BUSG 2309	0	26	0	0	26
BUSI 1301	403	144	295	209	1,051
BUSI 1307	111	0	16	0	127
BUSI 1311	20	6	20	24	70
BUSI 2301	125	9	53	52	239
BUSI 2302	26	0	0	0	26
CDEC 1317	27	0	0	0	27
CDEC 1321	57	0	0	0	57
CDEC 1356	27	0	0	0	27
CDEC 1413	9	0	0	0	9
CDEC 1419	14	0	0	0	14
CDEC 2326	27	0	0	0	27
CETT 1403	0	20	0	0	20
CETT 1409	0	0	0	53	53
CETT 1415	0	25	0	0	25
CETT 1431	0	0	0	17	17
CETT 1449	0	0	0	42	42
CETT 1457	0	0	0	6	6
CETT 2435	0	0	0	11	11
CHEF 1264	0	0	3	0	3
CHEF 1301	0	0	20	0	20
CHEF 1305	0	0	59	0	59
CHEF 1314	0	0	17	0	17
CHEF 1345	0	0	16	0	16
CHEF 1410	0	0	15	0	15

Course	Campus				Total
	NE	NW	SE	SO	
CHEM 1405	76	20	22	39	157
CHEM 1406	275	182	276	232	965
CHEM 1407	10	0	0	0	10
CHEM 1411	221	74	232	91	618
CHEM 1412	58	8	50	17	133
CHEM 2423	46	33	49	13	141
CHEM 2425	22	0	0	0	22
CJLE 1111	0	15	0	0	15
CJLE 1394	0	45	0	0	45
CJLE 1506	0	15	0	0	15
CJLE 1512	0	15	0	0	15
CJLE 1518	0	15	0	0	15
CJLE 2247	0	15	0	0	15
CJSA 1347	0	17	0	0	17
CJSA 1348	0	22	0	0	22
CJSA 1393	0	3	0	0	3
CJSA 2388	0	5	0	0	5
CNBT 1305	0	0	18	0	18
CNBT 1346	0	0	19	0	19
CNBT 1444	0	0	21	0	21
CNBT 2266	0	0	3	0	3
CNBT 2342	0	0	21	0	21
COMM 1307	49	20	53	64	186
COMM 1316	12	0	0	0	12
COMM 1335	28	0	0	0	28
COMM 2305	3	0	0	0	3
COMM 2311	35	0	0	0	35
COMM 2339	18	0	0	0	18
COSC 1401	404	177	544	440	1,565
COSC 1420	9	23	20	0	52
COSC 1436	96	35	40	52	223
COSC 1437	9	0	0	13	22
CPMT 1405	5	0	0	0	5
CPMT 1411	0	0	0	39	39
CPMT 1449	0	0	0	14	14
CPMT 2402	3	0	0	0	3

Course	Campus				Total
	NE	NW	SE	SO	
CPMT 2433	0	0	0	5	5
CRIJ 1301	0	170	0	0	170
CRIJ 1306	0	54	0	0	54
CRIJ 1307	0	68	0	0	68
CRIJ 1310	0	69	0	0	69
CRIJ 2313	0	35	0	0	35
CRIJ 2314	0	55	0	0	55
CRIJ 2323	0	62	0	0	62
CRIJ 2328	0	63	0	0	63
CRTG 1401	0	0	13	0	13
CRTG 1411	0	0	12	0	12
CRTG 1421	0	0	10	0	10
DAAC 1304	51	0	0	0	51
DAAC 1307	38	0	0	0	38
DAAC 1341	34	0	0	0	34
DAAC 1343	5	0	0	0	5
DAAC 2166	1	0	0	0	1
DAAC 2167	1	0	0	0	1
DAAC 2266	3	0	0	0	3
DANC 1110	0	6	0	0	6
DANC 1141	0	4	0	0	4
DANC 1145	0	5	0	0	5
DANC 1147	0	15	0	0	15
DANC 1148	0	8	0	0	8
DANC 1151	16	15	13	0	44
DANC 1210	0	4	0	0	4
DANC 1341	9	8	13	24	54
DANC 1342	1	4	0	4	9
DANC 1345	0	26	13	21	60
DANC 1346	0	4	0	0	4
DANC 1347	0	20	16	27	63
DANC 1348	0	3	0	12	15
DANC 2141	0	4	0	0	4
DANC 2145	0	3	0	0	3
DANC 2151	0	13	0	0	13
DANC 2303	20	95	22	22	159

Course	Campus				Total
	NE	NW	SE	SO	
DFTG 1405	0	0	0	47	47
DFTG 1409	0	0	0	56	56
DFTG 1417	0	0	0	17	17
DFTG 1458	0	0	0	16	16
DFTG 1491	0	0	0	24	24
DFTG 2170	0	0	0	9	9
DFTG 2402	0	0	0	12	12
DFTG 2410	0	0	0	12	12
DFTG 2419	0	0	0	13	13
DFTG 2421	0	0	0	14	14
DFTG 2444	0	0	0	12	12
DHYG 1207	28	0	0	0	28
DHYG 1235	22	0	0	0	22
DHYG 1239	22	0	0	0	22
DHYG 1301	28	0	0	0	28
DHYG 1311	21	0	0	0	21
DHYG 1315	22	0	0	0	22
DHYG 1327	28	0	0	0	28
DHYG 1431	29	0	0	0	29
DHYG 2360	22	0	0	0	22
DRAM 1120	26	22	26	19	93
DRAM 1121	4	0	0	0	4
DRAM 1310	171	157	196	101	625
DRAM 1330	11	5	15	6	37
DRAM 1351	32	28	37	28	125
DRAM 1352	16	0	0	4	20
DRAM 2120	13	0	0	31	44
DRAM 2331	0	0	0	1	1
DRAM 2336	0	10	0	0	10
DRAM 2351	7	0	0	0	7
DRAM 2366	17	16	33	41	107
ECON 2301	545	236	558	536	1,875
ECON 2302	172	64	257	208	701
EDUC 1301	25	0	0	43	68
EECT 2439	0	0	0	9	9
ELMT 2341	0	14	0	0	14

Course	Campus				Total
	NE	NW	SE	SO	
EMSP 1160	93	0	0	0	93
EMSP 1355	34	0	0	0	34
EMSP 1356	23	0	0	0	23
EMSP 1438	22	0	0	0	22
EMSP 1501	94	0	0	0	94
EMSP 2160	22	0	0	0	22
EMSP 2161	34	0	0	0	34
EMSP 2162	9	0	0	0	9
EMSP 2243	23	0	0	0	23
EMSP 2267	23	0	0	0	23
EMSP 2338	10	0	0	0	10
EMSP 2430	9	0	0	0	9
EMSP 2444	34	0	0	0	34
EMSP 2534	8	0	0	0	8
ENGL 0324	193	123	229	276	821
ENGL 0325	22	21	44	16	103
ENGL 1301	1,971	1,255	1,563	1,324	6,113
ENGL 1302	1,097	561	810	698	3,166
ENGL 2307	24	74	51	49	198
ENGL 2308	0	22	0	0	22
ENGL 2311	0	82	0	0	82
ENGL 2322	34	34	101	93	262
ENGL 2323	0	0	25	31	56
ENGL 2327	250	33	144	176	603
ENGL 2328	92	0	75	35	202
ENGL 2332	157	95	119	256	627
ENGL 2333	24	16	27	0	67
ENGR 1201	0	0	16	9	25
ENGR 1304	0	0	53	15	68
ENGR 1307	0	0	18	0	18
ENGR 2301	0	0	21	11	32
ENGR 2302	0	0	18	0	18
ENGR 2305	0	0	0	9	9
ENGR 2403	0	0	5	0	5
ENTC 2331	0	0	0	20	20
EPCT 1243	0	7	0	0	7

Course	Campus				Total
	NE	NW	SE	SO	
EPCT 1247	0	7	0	0	7
EPCT 1311	0	9	0	0	9
EPCT 1440	0	7	0	0	7
EPCT 2267	0	4	0	0	4
ESOL 0311	5	8	0	0	13
ESOL 0312	7	17	0	0	24
ESOL 0313	12	12	0	0	24
ESOL 0314	4	11	0	0	15
ESOL 0315	8	12	0	0	20
ESOL 0316	11	10	0	0	21
ESOL 0321	5	12	0	0	17
FDNS 1103	0	0	32	0	32
FDNS 1164	0	0	1	0	1
FDNS 1309	0	0	25	0	25
FDNS 1341	0	0	19	0	19
FDNS 1346	0	0	19	0	19
FDNS 1371	0	0	28	0	28
FDNS 2164	0	0	26	0	26
FDNS 2165	0	0	1	0	1
FDNS 2400	0	0	40	0	40
FIRS 1301	0	18	0	0	18
FIRS 1313	0	18	0	0	18
FIRS 1319	0	18	0	0	18
FIRS 1323	0	18	0	0	18
FIRS 1329	0	18	0	0	18
FIRT 1307	0	23	0	0	23
FIRT 1311	0	10	0	0	10
FIRT 1331	0	14	0	0	14
FIRT 1333	0	23	0	0	23
FIRT 1338	0	18	0	0	18
FIRT 1391	0	3	0	0	3
FIRT 2333	0	9	0	0	9
FIRT 2388	0	3	0	0	3
FLMC 1311	30	0	0	0	30
FLMC 1431	38	0	0	0	38
FLMC 2434	24	0	0	0	24

Course	Campus				Total
	NE	NW	SE	SO	
FREN 1100	11	0	0	6	17
FREN 1411	44	0	24	72	140
FREN 1412	0	0	0	21	21
FREN 2311	19	0	0	0	19
FSHN 2309	22	0	0	0	22
GEOG 1300	121	33	0	0	154
GEOG 1303	48	82	37	0	167
GEOL 1305	0	44	0	0	44
GEOL 1401	20	68	0	0	88
GEOL 1403	277	148	319	213	957
GEOL 1404	53	23	142	42	260
GEOL 1445	22	0	20	0	42
GERM 1110	10	0	0	0	10
GERM 1411	55	0	0	0	55
GERM 2311	20	0	0	0	20
GOVT 2305	1,163	629	1,199	978	3,969
GOVT 2306	790	397	786	815	2,788
HALT 1301	0	25	0	0	25
HALT 1353	0	4	0	0	4
HALT 1422	0	12	0	0	12
HALT 2308	0	10	0	0	10
HALT 2315	0	16	0	0	16
HALT 2318	0	30	0	0	30
HALT 2323	0	15	0	0	15
HAMG 1321	0	0	21	0	21
HAMG 1340	0	0	17	0	17
HART 1401	0	0	0	79	79
HART 1403	0	0	0	39	39
HART 1407	0	0	0	67	67
HART 1445	0	0	0	20	20
HART 2431	0	0	0	37	37
HART 2436	0	0	0	13	13
HART 2438	0	0	0	39	39
HART 2442	0	0	0	28	28
HART 2445	0	0	0	44	44
HART 2449	0	0	0	14	14

Course	Campus				Total
	NE	NW	SE	SO	
HECO 1315	0	0	41	0	41
HECO 1322	153	41	286	117	597
HECO 2311	22	0	0	0	22
HIST 1301	1,067	722	956	909	3,654
HIST 1302	610	422	576	770	2,378
HIST 2301	41	0	0	67	108
HIST 2311	67	32	65	80	244
HIST 2321	0	24	0	24	48
HITT 1401	15	0	0	0	15
HITT 1445	18	0	0	0	18
HITT 2260	13	0	0	0	13
HPRS 1206	129	0	0	0	129
HPRS 2200	92	0	0	0	92
HPRS 2201	79	0	0	0	79
HPRS 2331	24	0	0	0	24
HRPO 1311	50	8	54	34	146
HRPO 2301	0	10	21	32	63
HUMA 1315	99	19	66	16	200
HYDR 1345	0	0	0	4	4
IMED 1416	20	0	0	0	20
INDS 1341	0	0	17	0	17
INMT 1319	0	0	0	22	22
INMT 2388	0	4	0	0	4
INMT 2480	0	1	0	0	1
ITCC 1402	38	0	14	14	66
ITCC 1406	30	0	13	12	55
ITCC 1442	20	0	0	11	31
ITCC 1446	15	0	0	9	24
ITCC 2432	7	0	0	0	7
ITNW 1425	18	13	31	26	88
ITNW 1448	7	0	0	11	18
ITNW 1451	9	0	0	0	9
ITNW 1454	10	0	0	0	10
ITNW 1492	4	0	0	0	4
ITSC 1405	41	20	40	41	142
ITSC 1407	0	10	0	0	10

Course	Campus				Total
	NE	NW	SE	SO	
ITSC 1425	9	12	15	12	48
ITSC 1447	7	0	0	0	7
ITSC 1458	12	0	0	0	12
ITSC 1491	13	0	0	0	13
ITSE 1411	10	6	15	68	99
ITSE 2402	22	0	0	0	22
ITSE 2405	0	10	0	0	10
ITSE 2409	12	0	0	0	12
ITSE 2421	7	0	12	0	19
ITSE 2449	11	0	0	0	11
ITSE 2472	5	0	0	0	5
ITSE 2473	0	0	19	0	19
ITSW 1407	31	10	23	26	90
ITSW 1410	0	0	0	47	47
ITSW 1491	0	0	0	6	6
ITSY 1400	13	6	46	14	79
ITSY 2400	15	0	0	0	15
ITSY 2401	13	0	16	0	29
ITSY 2459	6	0	0	0	6
LGLA 1303	57	0	0	0	57
LGLA 1305	42	0	0	0	42
LGLA 1307	72	0	0	0	72
LGLA 1345	29	0	0	0	29
LGLA 1353	68	0	0	0	68
LGLA 2281	3	0	0	0	3
LGLA 2288	2	0	0	0	2
LGLA 2303	68	0	0	0	68
LGLA 2380	20	0	0	0	20
LTCA 1311	18	0	0	0	18
LTCA 1312	14	0	0	0	14
LTCA 1313	18	0	0	0	18
LTCA 2314	14	0	0	0	14
LTCA 2315	16	0	0	0	16
LTCA 2660	1	0	0	0	1
LTCA 2661	2	0	0	0	2
MAIR 1449	0	0	0	16	16

Course	Campus				Total
	NE	NW	SE	SO	
MATH 0302	555	494	586	630	2,265
MATH 0304	647	495	618	604	2,364
MATH 0350	816	516	886	566	2,784
MATH 1314	701	340	772	499	2,312
MATH 1316	147	57	169	77	450
MATH 1324	128	34	80	73	315
MATH 1325	128	26	110	68	332
MATH 1332	18	29	10	26	83
MATH 1342	164	64	264	104	596
MATH 1350	23	18	19	12	72
MATH 1351	0	0	0	6	6
MATH 2315	22	5	25	0	52
MATH 2318	14	0	0	0	14
MATH 2320	5	0	0	0	5
MATH 2412	41	29	44	33	147
MATH 2414	37	9	72	7	125
MATH 2513	56	13	85	56	210
MILI 0041	0	0	0	6	6
MILI 0042	0	0	0	4	4
MILI 1001	0	0	0	9	9
MRKG 1302	0	36	21	0	57
MRKG 1311	62	29	90	115	296
MRKG 2348	0	0	0	6	6
MRKG 2349	0	24	0	0	24
MTRC 1405	0	0	0	7	7
MUAP 1190	6	22	1	27	56
MUAP 1191	0	0	0	2	2
MUAP 1193	2	0	0	0	2
MUAP 1290	27	11	14	34	86
MUAP 1291	14	14	14	9	51
MUAP 1292	5	0	6	2	13
MUAP 2191	2	0	0	0	2
MUAP 2291	3	0	4	1	8
MUAP 2292	1	0	0	1	2
MUEN 1121	0	0	0	17	17
MUEN 1122	10	0	15	0	25

Course	Campus				Total
	NE	NW	SE	SO	
MUEN 1132	7	0	0	0	7
MUEN 1133	28	0	25	0	53
MUEN 1141	20	0	34	21	75
MUEN 1142	0	10	16	0	26
MUEN 2131	2	0	0	0	2
MUSI 1157	0	0	17	0	17
MUSI 1163	11	0	0	8	19
MUSI 1164	1	0	0	0	1
MUSI 1181	27	9	27	27	90
MUSI 1182	10	0	5	1	16
MUSI 1183	8	0	0	26	34
MUSI 1192	18	5	27	15	65
MUSI 1211	19	6	21	22	68
MUSI 1216	16	8	18	22	64
MUSI 1286	11	0	0	0	11
MUSI 1301	81	11	67	45	204
MUSI 1304	0	0	0	10	10
MUSI 1306	298	292	198	264	1,052
MUSI 1308	19	5	0	13	37
MUSI 1390	26	8	0	11	45
MUSI 2211	6	1	9	8	24
MUSI 2216	5	1	9	7	22
OSHT 2501	0	8	0	0	8
PBAD 1345	0	12	0	0	12
PBAD 2341	0	5	0	0	5
PHED 1101	0	4	0	0	4
PHED 1102	28	22	0	12	62
PHED 1104	24	0	18	17	59
PHED 1106	0	0	0	8	8
PHED 1107	28	8	0	0	36
PHED 1111	30	31	23	24	108
PHED 1112	0	0	0	19	19
PHED 1113	28	58	0	0	86
PHED 1115	26	0	0	7	33
PHED 1116	0	7	0	0	7
PHED 1118	5	0	0	0	5

Course	Campus				Total
	NE	NW	SE	SO	
PHED 1120	38	7	49	19	113
PHED 1121	0	10	0	0	10
PHED 1122	34	13	14	21	82
PHED 1123	0	3	0	0	3
PHED 1124	6	0	0	0	6
PHED 1125	11	3	8	26	48
PHED 1126	0	3	0	0	3
PHED 1127	0	0	9	0	9
PHED 1128	0	0	13	9	22
PHED 1129	0	30	13	0	43
PHED 1130	0	0	0	26	26
PHED 1131	14	0	0	19	33
PHED 1133	72	57	100	78	307
PHED 1134	86	76	57	94	313
PHED 1136	0	3	0	0	3
PHED 1140	0	5	0	0	5
PHED 1141	0	3	0	0	3
PHED 1142	0	6	0	0	6
PHED 1144	0	5	0	0	5
PHED 1145	0	3	0	0	3
PHED 1146	0	2	0	0	2
PHED 1164	473	458	571	348	1,850
PHED 1252	28	0	0	0	28
PHED 1304	0	0	0	75	75
PHED 1306	24	0	21	22	67
PHED 1338	24	42	18	36	120
PHED 2102	6	2	0	0	8
PHED 2104	4	0	3	5	12
PHED 2106	0	0	0	2	2
PHED 2107	8	0	0	0	8
PHED 2111	9	11	6	11	37
PHED 2112	0	0	0	3	3
PHED 2113	6	6	0	0	12
PHED 2115	5	0	0	2	7
PHED 2116	0	1	0	0	1
PHED 2118	7	0	0	0	7

Course	Campus				Total
	NE	NW	SE	SO	
PHED 2120	9	1	8	2	20
PHED 2121	0	2	0	0	2
PHED 2122	21	2	7	5	35
PHED 2123	0	0	2	0	2
PHED 2124	3	0	0	0	3
PHED 2125	8	4	7	5	24
PHED 2126	0	1	6	0	7
PHED 2127	0	0	8	0	8
PHED 2128	0	0	6	3	9
PHED 2129	0	3	6	0	9
PHED 2130	0	0	0	3	3
PHED 2131	1	0	0	4	5
PHED 2133	22	13	42	31	108
PHED 2134	6	7	10	16	39
PHIL 1301	323	330	145	162	960
PHIL 1304	41	84	115	180	420
PHIL 1316	41	30	37	55	163
PHIL 2303	0	0	33	24	57
PHIL 2306	54	0	0	78	132
PHTC 1343	5	0	0	0	5
PHTC 1353	13	0	0	0	13
PHTC 2331	8	0	0	0	8
PHYS 1401	105	35	79	78	297
PHYS 1402	20	0	22	10	52
PHYS 1405	0	7	0	0	7
PHYS 1411	51	14	0	40	105
PHYS 1412	16	0	17	0	33
PHYS 1415	35	0	0	12	47
PHYS 2425	16	5	46	0	67
PHYS 2426	11	0	28	0	39
POFI 1449	15	39	0	42	96
POFI 2401	0	0	33	43	76
POFI 2431	0	10	0	24	34
POFT 1127	128	30	33	63	254
POFT 1309	10	0	25	0	35
POFT 1319	0	22	0	0	22

Course	Campus				Total
	NE	NW	SE	SO	
POFT 1321	67	50	92	127	336
POFT 1329	10	6	18	38	72
POFT 1331	21	0	0	0	21
POFT 2301	5	14	0	3	22
POFT 2312	21	6	0	5	32
PSTR 1401	0	0	18	0	18
PSYC 1301	301	162	136	374	973
PSYC 2301	1,096	610	774	765	3,245
PSYC 2302	25	45	45	71	186
PSYC 2306	41	39	0	0	80
PSYC 2308	75	161	76	69	381
PSYC 2314	367	155	119	159	800
PSYC 2315	35	0	0	0	35
PSYC 2316	38	38	0	0	76
PSYC 2318	30	0	0	0	30
PSYC 2319	40	0	84	23	147
PSYT 1345	35	0	0	0	35
PSYT 2165	1	0	0	0	1
PSYT 2331	29	0	0	0	29
PSYT 2370	23	0	0	0	23
PTHA 1321	18	0	0	0	18
PTHA 1431	19	0	0	0	19
PTHA 2366	19	0	0	0	19
PTHA 2409	19	0	0	0	19
PTHA 2431	18	0	0	0	18
QCTC 1301	0	0	0	6	6
QCTC 1448	0	0	0	17	17
RADR 1266	27	0	0	0	27
RADR 1313	27	0	0	0	27
RADR 2301	27	0	0	0	27
RADR 2309	29	0	0	0	29
RADR 2333	29	0	0	0	29
RADR 2366	29	0	0	0	29
RADR 2367	1	0	0	0	1
RBTC 1401	0	0	0	42	42
RBTC 1447	0	14	0	4	18

Course	Campus				Total
	NE	NW	SE	SO	
RDNG 0160	21	0	0	0	21
RDNG 0361	353	203	262	446	1,264
RDNG 0363	45	29	61	58	193
RELE 1301	70	0	0	0	70
RELE 1303	40	0	0	0	40
RELE 1311	55	0	0	0	55
RELE 1315	34	0	0	0	34
RELE 1319	37	0	0	0	37
RELE 2301	69	0	0	0	69
RNSG 1105	0	0	0	106	106
RNSG 1360	0	0	0	105	105
RNSG 1441	0	0	0	97	97
RNSG 1443	0	0	0	71	71
RNSG 1461	0	0	0	97	97
RNSG 1513	0	0	0	105	105
RNSG 2201	0	0	0	90	90
RNSG 2208	0	0	0	89	89
RNSG 2260	0	0	0	89	89
RNSG 2261	0	0	0	90	90
RNSG 2461	0	0	0	71	71
RSPT 1101	30	0	0	0	30
RSPT 1166	30	0	0	0	30
RSPT 1419	30	0	0	0	30
RSPT 2133	21	0	0	0	21
RSPT 2210	21	0	0	0	21
RSPT 2266	21	0	0	0	21
RSPT 2405	21	0	0	0	21
RSTO 1306	0	0	28	0	28
RTVB 1405	43	0	0	0	43
RTVB 1409	27	0	0	0	27
RTVB 1421	29	0	0	0	29
RTVB 2265	4	0	0	0	4
RTVB 2487	4	0	0	0	4
SLNG 1215	0	63	0	0	63
SLNG 1347	0	68	0	0	68
SLNG 1404	0	106	0	0	106

Course	Campus				Total
	NE	NW	SE	SO	
SLNG 1444	0	28	0	0	28
SLNG 2166	0	30	0	0	30
SLNG 2401	0	33	0	0	33
SLPS 1371	0	9	0	0	9
SMER 1404	0	0	0	12	12
SMER 1425	0	0	0	16	16
SMER 1428	0	0	0	16	16
SMER 2450	0	0	0	6	6
SMFT 1341	0	13	0	0	13
SMFT 1343	0	16	0	0	16
SOCI 1301	882	514	763	490	2,649
SOCI 1306	32	0	37	0	69
SOCI 2301	0	19	75	0	94
SOCI 2326	0	0	39	19	58
SOCI 2336	0	0	36	0	36
SOCW 2361	28	0	0	0	28
SPAN 1100	51	25	0	0	76
SPAN 1110	5	0	0	0	5
SPAN 1411	350	151	279	283	1,063
SPAN 1412	143	46	65	90	344
SPAN 2106	27	0	0	0	27
SPAN 2311	108	30	61	43	242
SPAN 2312	0	12	23	16	51
SPCH 1144	27	0	0	0	27
SPCH 1145	1	0	0	0	1
SPCH 1311	1,051	400	571	280	2,302
SPCH 1315	122	28	49	0	199
SPCH 1318	54	48	26	157	285
SPCH 1321	462	297	422	418	1,599
SPCH 1342	0	0	0	15	15
SPCH 2144	2	0	0	0	2
SPCH 2333	14	0	0	0	14
SRGT 1266	28	0	0	0	28
SRGT 1405	28	0	0	0	28
SRGT 1409	28	0	0	0	28
TECA 1303	47	0	0	0	47

Course	Campus				Total
	NE	NW	SE	SO	
TECA 1311	64	0	0	0	64
TECA 1318	49	0	0	0	49
TECA 1354	52	0	0	0	52
WLDG 1427	0	0	0	2	2
WLDG 1428	0	0	0	35	35
WLDG 1430	0	0	0	30	30
Total	32,661	18,588	24,632	24,500	100,381