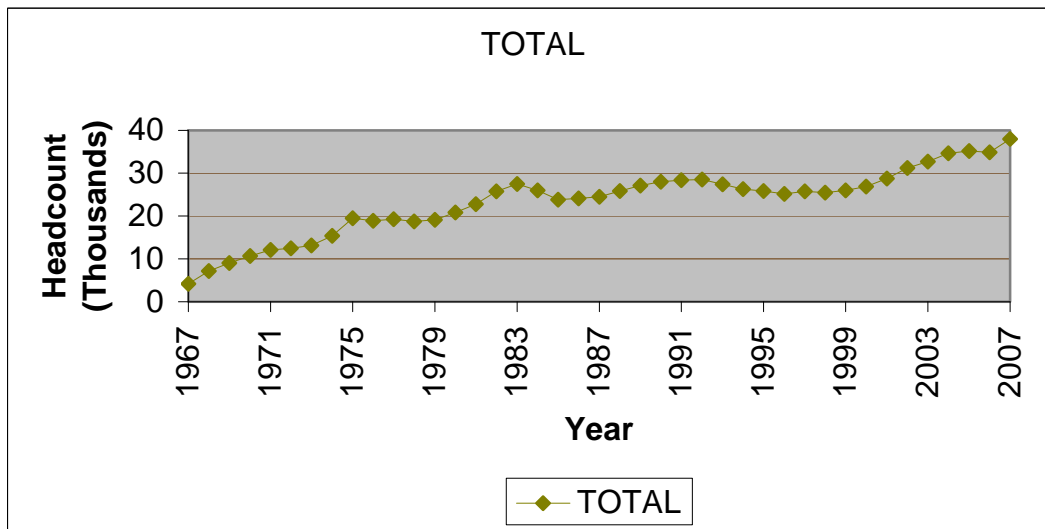


STATISTICAL HANDBOOK

2007FL

HEADCOUNT ENROLLMENTS FALL SEMESTERS -- 1967 – PRESENT



Office of Institutional Research

Tarrant County College

Table of Contents

TCCD 2007 Fall Semester Statistical Handbook

	Page
Introduction	1
Section I: Historical Data	2
Table 1. Headcount and Full-Time Equivalent	3
Figure 1. Headcount Enrollments by Campus, Fall Semesters	4
Section II: Demographic Data	5
Table	
2. 2007 Fall Headcount, Enrollments, Contact Hours, and Semester Hours	6
3. 2007 Fall - Ethnicity by Gender – District	7
4. 2007 Fall – Ethnicity by Gender – South	8
5. 2007 Fall – Ethnicity by Gender – Northeast	9
6. 2007 Fall – Ethnicity by Gender – Northwest	10
7. 2007 Fall – Ethnicity by Gender – Southeast	11
8. Average Age by Campus – Separated by Age Group	12
8a. Average Age by Campus – Mean	12
9. Students by Zip Code	13
10. Full/Part Time for District	16
11. Full/Part Time by Campus	16
Section III: Course Enrollments by Department by Campus	17
Table	
12. Enrollments by Department	18
Section IV: Course Enrollments by Course Number by Campus	21
Table	
13. Enrollments by Course	22

INTRODUCTION

This statistical handbook contains data on TCCD credit students for Fall 2007. It does not include Continuing Education students.

Table 2 contains information related to the source of the data in this report and how the data in this report relates to data in other reports such as the certified state reports. Minor differences are to be expected between Datatel/*Colleague* reports that are run at different times; this data may vary slightly from other Datatel/*Colleague* reports. Audit enrollments are included in this report.

If there are questions about this statistical handbook, please contact the TCCD Office of Institutional Research.

Section I

HISTORICAL DATA

LIMITATIONS OF STATISTICAL HANDBOOK DATA

Section I contains data on TCCD credit students for Fall 2007 (does not include Continuing Education students).

This section is based on data collected from the Datatel/*Colleague* system for all semesters beginning in the year 2004. All data identified which is prior to 2004 was collected utilizing the Legacy system. Minor differences are to be expected between Datatel/*Colleague* reports that are run at different times; thus this data may vary slightly from other Datatel/*Colleague* reports.

Minor differences are to be expected between the data in this section and the certified state reports.

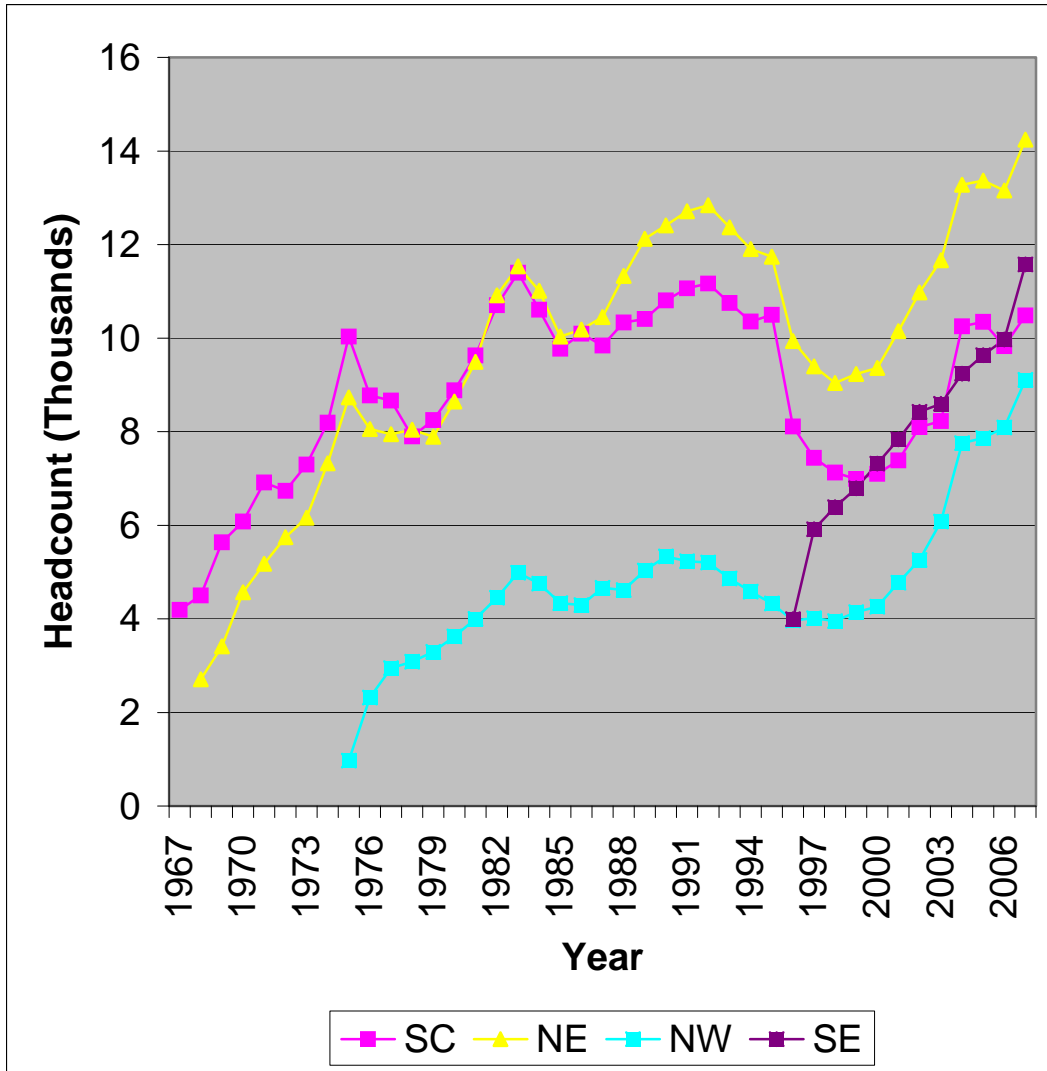
**TABLE 1--FALL SEMESTERS
HEADCOUNT AND FULL-TIME EQUIVALENT**

YEAR	District Total	Campus Totals		South			Northeast			Northwest			Southeast		
		HC	FTE	HC	FTE	% of Total	HC	FTE	% of Total	HC	FTE	% of Total	HC	FTE	% of Total
1976-77	18899	19148	11459	8776	5357	46.75	8053	4741	41.37	2319	1361	11.88			
1977-78	19257	19554	11323	8663	5086	44.92	7945	4540	40.10	2946	1697	14.99			
1978-79	18745	19018	10302	7895	4314	41.88	8042	4304	41.78	3081	1684	16.35			
1979-80	19085	19432	10375	8243	4458	42.97	7893	4158	40.08	3296	1759	16.95			
1980-81	20798	21152	11124	8883	4709	42.33	8644	4504	40.49	3625	1911	17.18			
1981-82	22731	23117	12035	9627	5036	41.84	9493	4936	41.01	3997	2063	17.14			
1982-83	25746	26163	13704	10703	5615	40.97	10910	5699	41.59	4550	2390	17.44			
1983-84	27452	27919	14398	11401	5930	41.19	11535	5905	41.01	4983	2563	17.80			
1984-85	25990	26369	13257	10606	5386	40.63	11010	5490	41.41	4753	2381	17.96			
1985-86	23783	24135	12408	9768	5011	40.39	10030	5193	41.85	4337	2204	17.76			
1986-87	24092	24562	12726	10090	5110	40.15	10178	5422	42.61	4294	2194	17.24			
1987-88	24490	24949	12989	9839	5004	38.52	10445	5588	43.02	4665	2397	18.45			
1988-89	25857	26280	13746	10334	5247	38.17	11333	6077	44.21	4613	2422	17.62			
1989-90	27109	27559	14339	10409	5337	37.22	12120	6409	44.70	5030	2593	18.08			
1990-91	27999	28546	15082	10804	5643	37.42	12410	6669	44.22	5332	2770	18.37			
1991-92	28349	29009	15332	11064	5702	37.19	12711	6888	44.93	5234	2742	17.88			
1992-93	28515	29211	15624	11168	5857	37.49	12840	7020	44.93	5203	2747	17.58			
1993-94	27352	27977	15075	10749	5680	37.68	12367	6802	45.12	4861	2593	17.20			
1994-95	26253	26838	14387	10349	5474	38.05	11906	6456	44.87	4583	2457	17.08			
1995-96	25850	26565	14186	10496	5559	39.19	11742	6290	44.34	4327	2337	16.47			
1996-97	25174	25998	13857	8106	4333	31.27	9935	5323	38.41	3964	2128	15.36	3993	2073	14.96
1997-98	25779	26762	14380	7436	3946	27.44	9397	5040	35.05	4013	2168	15.08	5916	3226	22.43
1998-99	25432	26501	14828	7128	3943	26.59	9038	5066	34.17	3951	2158	14.55	6384	3661	24.69
1999-00	25980	27159	15168	6991	3859	25.44	9230	5140	33.89	4145	2288	15.08	6793	3881	25.59
2000-01	26836	28038	15740	7097	3933	24.99	9364	5249	33.35	4263	2366	15.03	7314	4192	26.63
2001-02	28751	30139	17066	7383	4195	24.58	10149	5737	33.62	4772	2620	15.35	7835	4514	26.45
2002-03	31169	32755	18479	8096	4615	24.97	10975	6138	33.22	5259	2912	15.76	8425	4814	26.05
2003-04	32657	34562	19388	8229	4588	23.66	11663	6505	33.55	6077	3354	17.30	8593	4941	25.48
2004-05	34642	40519	20402	10248	5096	24.98	13279	6712	32.90	7757	3674	18.01	9235	4920	24.12
2005-06	35163	41219	20509	10348	5057	24.66	13370	6693	32.63	7866	3717	18.12	9635	5042	24.58
2006-07	34854	41045	20206	9826	4737	23.44	13157	6542	32.38	8091	3776	18.69	9971	5151	25.49
2007-08	37948	45408	21658	10481	4922	22.73	14246	7013	32.38	9107	4096	18.91	11574	5627	25.98

Note: District total represents unduplicated headcount

Figure 1. Headcount Enrollments by Campus, Fall Semesters

Fall 1967 to Fall 2007



Section II

DEMOGRAPHIC DATA

LIMITATIONS OF STATISTICAL HANDBOOK DATA

Section II contains data on TCCD credit students for Fall 2007 (does not include Continuing Education students). This section is based on data from the Datatel/*Colleague* system. Minor differences are to be expected between Datatel/*Colleague* reports that are run at different times; thus this data may vary slightly from other Datatel/*Colleague* reports.

Minor differences are to be expected between the data in this section and the certified state reports.

Table 2. 2007FL Headcount, Enrollments, Contact Hours, and Semester Hours

UG CONTACT HOURS AND HEADCOUNT

TERM: 2007FL

CAMPUS	HEADCOUNT	CREDIT STUDENTS		SEMESTER HOURS	FTE
		NUMBER OF ENROLLMENTS	CONTACT HOURS		
Northeast	14,246	38,041	1,999,552	105,194	7012.9
Northwest	9,107	22,284	1,144,512	61,434	4095.6
Southeast	11,574	30,407	1,531,556	84,407	5627.1
South	10,481	25,847	1,418,504	73,830	4922.0
TOTAL (Dupl)	45,408	116,579	6,094,124	324,865	21657.7
TCCD (Undupl)	37,948				

Notes: This report was run on the Datatel/*Colleague* system using the semester as defined by the *Colleague* field Term.

This report includes all enrollments for the *Colleague* Term (semester) as of the run time. This data will differ from some other reports that only include enrollments in classes with an ODOR (Official Day of Record) on or before the official semester ODOR (i.e. some reports exclude some "miniterm" enrollments).

This report may differ from other *Colleague* reports with different run time/dates.

This report will differ from the certified state reports. State reports use a different definition for semester.

Table 3. 2007FL Ethnicity by Gender TCCD District

		Gender		Total
		Female	Male	
White	Count	12907	9436	22343
	% within Ethnicity	57.8%	42.2%	100.0%
	% within Gender	57.5%	60.8%	58.9%
Black	Count	3747	1948	5695
	% within Ethnicity	65.8%	34.2%	100.0%
	% within Gender	16.7%	12.6%	15.0%
Hispanic	Count	4135	2776	6911
	% within Ethnicity	59.8%	40.2%	100.0%
	% within Gender	18.4%	17.9%	18.2%
Asian	Count	1213	1054	2267
	% within Ethnicity	53.5%	46.5%	100.0%
	% within Gender	5.4%	6.8%	6.0%
Am Ind	Count	114	54	168
	% within Ethnicity	67.9%	32.1%	100.0%
	% within Gender	.5%	.3%	.4%
International	Count	244	178	422
	% within Ethnicity	57.8%	42.2%	100.0%
	% within Gender	1.1%	1.1%	1.1%
Unknown	Count	81	61	142
	% within Ethnicity	57.0%	43.0%	100.0%
	% within Gender	.4%	.4%	.4%
Total	Count	22441	15507	37948
	% within Ethnicity	59.1%	40.9%	100.0%
	% within Gender	100.0%	100.0%	100.0%

Table 4. 2007FL Ethnicity by Gender South Campus

		Gender		Total
		Female	Male	
White	Count	3340	2343	5683
	% within Ethnicity	58.8%	41.2%	100.0%
	% within Gender	52.3%	57.1%	54.2%
Black	Count	1459	673	2132
	% within Ethnicity	68.4%	31.6%	100.0%
	% within Gender	22.9%	16.4%	20.3%
Hispanic	Count	1257	837	2094
	% within Ethnicity	60.0%	40.0%	100.0%
	% within Gender	19.7%	20.4%	20.0%
Asian	Count	225	179	404
	% within Ethnicity	55.7%	44.3%	100.0%
	% within Gender	3.5%	4.4%	3.9%
Am Ind	Count	29	12	41
	% within Ethnicity	70.7%	29.3%	100.0%
	% within Gender	.5%	.3%	.4%
International	Count	55	45	100
	% within Ethnicity	55.0%	45.0%	100.0%
	% within Gender	.9%	1.1%	1.0%
No Data	Count	16	11	27
	% within Ethnicity	59.3%	40.7%	100.0%
	% within Gender	.3%	.3%	.3%
Total	Count	6381	4100	10481
	% within Ethnicity	60.9%	39.1%	100.0%
	% within Gender	100.0%	100.0%	100.0%

Table 5. 2007FL Ethnicity by Gender NE Campus

		Gender		Total
		Female	Male	
White	Count	5609	3935	9544
	% within Ethnicity	58.8%	41.2%	100.0%
	% within Gender	65.9%	68.6%	67.0%
Black	Count	1082	543	1625
	% within Ethnicity	66.6%	33.4%	100.0%
	% within Gender	12.7%	9.5%	11.4%
Hispanic	Count	1187	781	1968
	% within Ethnicity	60.3%	39.7%	100.0%
	% within Gender	13.9%	13.6%	13.8%
Asian	Count	471	372	843
	% within Ethnicity	55.9%	44.1%	100.0%
	% within Gender	5.5%	6.5%	5.9%
Am Ind	Count	54	23	77
	% within Ethnicity	70.1%	29.9%	100.0%
	% within Gender	.6%	.4%	.5%
International	Count	90	61	151
	% within Ethnicity	59.6%	40.4%	100.0%
	% within Gender	1.1%	1.1%	1.1%
No Data	Count	19	19	38
	% within Ethnicity	50.0%	50.0%	100.0%
	% within Gender	.2%	.3%	.3%
Total	Count	8512	5734	14246
	% within Ethnicity	59.8%	40.2%	100.0%
	% within Gender	100.0%	100.0%	100.0%

Table 6. 2007FL Ethnicity by Gender NW Campus

		Gender		Total
		Female	Male	
White	Count	3585	2241	5826
	% within Ethnicity	61.5%	38.5%	100.0%
	% within Gender	63.4%	65.0%	64.0%
Black	Count	560	240	800
	% within Ethnicity	70.0%	30.0%	100.0%
	% within Gender	9.9%	7.0%	8.8%
Hispanic	Count	1222	772	1994
	% within Ethnicity	61.3%	38.7%	100.0%
	% within Gender	21.6%	22.4%	21.9%
Asian	Count	210	154	364
	% within Ethnicity	57.7%	42.3%	100.0%
	% within Gender	3.7%	4.5%	4.0%
Am Ind	Count	26	14	40
	% within Ethnicity	65.0%	35.0%	100.0%
	% within Gender	.5%	.4%	.4%
International	Count	45	22	67
	% within Ethnicity	67.2%	32.8%	100.0%
	% within Gender	.8%	.6%	.7%
No Data	Count	9	7	16
	% within Ethnicity	56.3%	43.8%	100.0%
	% within Gender	.2%	.2%	.2%
Total	Count	5657	3450	9107
	% within Ethnicity	62.1%	37.9%	100.0%
	% within Gender	100.0%	100.0%	100.0%

Table 7. 2007FL Ethnicity by Gender SE Campus

		Gender		Total
		Female	Male	
White	Count	3491	2477	5968
	% within Ethnicity	58.5%	41.5%	100.0%
	% within Gender	50.6%	52.9%	51.6%
Black	Count	1552	811	2363
	% within Ethnicity	65.7%	34.3%	100.0%
	% within Gender	22.5%	17.3%	20.4%
Hispanic	Count	1146	761	1907
	% within Ethnicity	60.1%	39.9%	100.0%
	% within Gender	16.6%	16.3%	16.5%
Asian	Count	513	500	1013
	% within Ethnicity	50.6%	49.4%	100.0%
	% within Gender	7.4%	10.7%	8.8%
Am Ind	Count	34	13	47
	% within Ethnicity	72.3%	27.7%	100.0%
	% within Gender	.5%	.3%	.4%
International	Count	117	87	204
	% within Ethnicity	57.4%	42.6%	100.0%
	% within Gender	1.7%	1.9%	1.8%
No Data	Count	42	30	72
	% within Ethnicity	58.3%	41.7%	100.0%
	% within Gender	.6%	.6%	.6%
Total	Count	6895	4679	11574
	% within Ethnicity	59.6%	40.4%	100.0%
	% within Gender	100.0%	100.0%	100.0%

Table 8. 2007FL Age by Campus

Age		Campus				
		NE	NW	SE	SO	Total
Under 21	Count	5576	3353	5272	3577	17778
		39.1%	36.8%	45.6%	34.1%	39.2%
21 - 25	Count	3949	2534	3132	2884	12499
		27.7%	27.8%	27.1%	27.5%	27.5%
26 - 30	Count	1721	1181	1186	1425	5513
		12.1%	13.0%	10.2%	13.6%	12.1%
31 - 35	Count	1019	727	712	850	3308
		7.2%	8.0%	6.2%	8.1%	7.3%
36 - 40	Count	748	517	498	662	2425
		5.3%	5.7%	4.3%	6.3%	5.3%
Over 40	Count	1233	795	774	1083	3885
		8.7%	8.7%	6.7%	10.3%	8.6%
Total	Count	14246	9107	11574	10481	45408
	% within	100.0%	100.0%	100.0%	100.0%	100.0%

Table 8A. 2007FL Average Age by Campus

NE	NW	SE	SO	TCCD
25.90	26.24	24.64	26.93	25.68*

* The TCCD average age of 25.68 is based on the average age of the unduplicated enrollment count of 37,948.

Table 9. 2007FL Students by ZIP Code

	Campus				Total
Zip Code	NE	NW	SE	SO	
76063	162	95	1336	265	1,858
76248	1041	518	86	158	1,803
76180	1334	215	84	166	1,799
76017	181	96	964	344	1,585
76137	749	596	65	143	1,553
75052	133	87	984	139	1,343
76133	168	183	98	797	1,246
76179	179	826	49	113	1,167
76028	143	87	172	654	1,056
76001	109	64	693	187	1053
76016	137	64	572	273	1046
76018	94	67	771	101	1033
76002	99	51	720	128	998
76021	777	71	51	81	980
76014	102	52	639	120	913
76108	128	560	61	140	889
76039	629	79	66	80	854
76116	104	361	58	301	824
76051	639	69	44	69	821
76013	165	69	431	155	820
76123	104	90	64	490	748
76010	111	41	508	81	741
76112	320	72	65	271	728
76148	455	158	40	75	728
76132	100	131	44	433	708
76106	81	500	22	63	666
76053	499	69	31	53	652
76006	215	57	278	63	613
76117	351	129	24	64	568
76040	419	49	52	47	567
76131	148	334	28	53	563
76135	90	365	32	67	554
76140	66	46	74	366	552
76036	71	63	46	357	537
76119	84	44	54	335	517
76134	67	53	50	345	515

	Campus				Total
Zip Code	NE	NW	SE	SO	
76015	77	29	308	98	512
76012	203	28	212	66	509
76034	410	35	11	34	490
76011	130	30	266	58	484
76110	74	66	28	309	477
76092	366	33	18	21	438
76114	53	320	15	46	434
76126	55	179	37	162	433
76020	49	297	28	49	423
76022	287	46	30	36	399
76107	74	131	26	167	398
76054	276	28	16	28	348
76120	162	48	49	83	342
76262	197	99	14	27	337
76118	234	29	23	31	317
76109	43	76	14	159	292
76111	100	98	18	63	279
76115	26	29	21	201	277
75050	71	20	128	30	249
76103	88	46	12	91	237
76052	71	131	10	23	235
76105	43	16	12	143	214
76060	25	13	72	102	212
76104	29	29	21	115	194
76009	15	16	48	79	158
76058	22	17	11	92	142
75051	16	7	79	12	114
76247	43	50	5	10	108
76065	13	9	76	8	106
76102	23	20	8	55	106
76008	17	59	5	24	105
75054	11	5	67	16	99
75104	11	6	67	11	95
76078	23	41	6	5	75
76155	42	5	18	7	72
76082	13	39	5	14	71
76084	6	4	41	18	69

	Campus				Total
Zip Code	NE	NW	SE	SO	
76087	13	34	9	13	69
76048	11	15	7	25	58
76033	14	10	9	24	57
76164	9	35	2	8	54
76031	9	7	9	28	53
76049	14	17	2	18	51
76085	8	30	3	6	47
75067	24	5	6	10	45
76127	0	43	1	0	44
76023	7	26	2	3	38
76059	8	4	3	22	37
76071	8	18	4	6	36
76086	8	14	5	9	36
76177	14	13	1	8	36
76234	12	14	1	7	34
75038	15	4	7	4	30
75137	2	3	22	3	30
75028	19	5	0	4	28
75115	7	0	15	6	28
76073	10	17	1	0	28
76050	4	6	1	10	21
75062	14	3	2	1	20
76426	8	8	1	3	20
Other	356	231	280	193	1060
Total	14246	9107	11574	10481	45408

** Zip Code groups with < 20 and students without Zip Codes are identified as Other.

Table 10. 2007FL Full/Part Time for TCCD

	Frequency	Percent	Valid Percent	Cumulative Percent
Part Time	24855	65.5	65.5	65.5
Full Time	13093	34.5	34.5	100.0
Total	37948	100.0	100.0	

Table 10 is the full/part time student data for the TCCD district as a whole.

Table 11. 2007FL Full/Part Time by Campus

Campus		Full/Part Time		Total
		Part Time	Full Time	
SO	Count	8328	2153	10481
	% within Campus	79.5%	20.5%	100.0%
	% within Full/Part Time	23.8%	20.8%	23.1%
NE	Count	10768	3478	14246
	% within Campus	75.6%	24.4%	100.0%
	% within Full/Part Time	30.7%	33.6%	31.4%
NW	Count	7249	1858	9107
	% within Campus	79.6%	20.4%	100.0%
	% within Full/Part Time	20.7%	18.0%	20.1%
SE	Count	8720	2854	11574
	% within Campus	75.3%	24.7%	100.0%
	% within Full/Part Time	24.9%	27.6%	25.5%
Total	Count	35065	10343	45408
	% within Campus	77.2%	22.8%	100.0%
	% within Full/Part Time	100.0%	100.0%	100.0%

Table 11 is the full/part time student data for each individual campus. For this table, only enrollments at the individual campus are considered. For example, if a student took 9 hours at SO and 3 hours at NE, the student is listed as part time at SO and part time at NE (and full time in Table 10).

Section III

Course Enrollments by Department by Campus

LIMITATIONS OF STATISTICAL HANDBOOK DATA

Section III contains data on TCCD credit students for Fall 2007 (does not include Continuing Education students). This section is based on data from the Datatel/Colleague system. Minor differences are to be expected between Datatel/Colleague reports that are run at different times; thus this data may vary slightly from other Datatel/Colleague reports.

Minor differences are to be expected between the data in this section and the certified state reports.

Section III excludes 10,314 enrollments in separate lab sections that are included in Section II. Section II contains 116,579 total enrollments for 2007FL. This section contains 106,265 enrollments.

Course Enrollments

Tables 12 and 13 exclude 10,314 enrollments in separate lab sections that are included in Table 2. Table 2 contains 116,579 total enrollments for 2007FL. Tables 12 and 13 contain 106,265 enrollments.

Table 12. 2007FL Enrollments by Department

Department	Campus				Total
	NE	NW	SE	SO	
ABDR	0	0	0	170	170
ACCT	419	233	429	279	1360
ACNT	79	64	25	134	302
AERM	0	877	0	0	877
AGCR	0	30	0	0	30
ANTH	21	51	158	0	230
ARCE	0	0	7	0	7
ARCH	0	0	109	0	109
ARCT	0	0	17	0	17
ARTC	242	0	0	0	242
ARTS	1508	549	744	590	3391
ARTV	19	0	0	0	19
AUMT	0	0	0	373	373
BCIS	349	337	204	227	1117
BIOL	2522	1092	1530	1217	6361
BMGT	165	153	92	90	500
BUSG	22	114	14	10	160
BUSI	486	247	433	281	1447
CDEC	206	0	0	0	206
CETT	0	0	0	160	160
CHEF	0	0	147	0	147
CHEM	729	344	710	330	2113
CJLE	0	64	0	0	64
CJSA	0	57	0	0	57
CNBT	0	0	102	0	102
COMM	179	16	54	59	308
COSC	680	268	672	535	2155
CPMT	28	0	0	61	89
CRIJ	0	468	0	0	468
DAAC	123	0	0	0	123
DANC	121	296	98	149	664
DFTG	0	0	0	193	193
DHYG	233	0	0	0	233
DRAM	295	279	367	129	1070
ECON	568	416	948	760	2692

Department	Campus				Total
	NE	NW	SE	SO	
EDUC	47	0	0	50	97
EECT	0	0	0	17	17
ELMT	0	0	0	1	1
EMSP	318	0	0	0	318
ENGL	4661	2541	3790	2785	13777
ENGR	0	0	143	58	201
ENTC	0	0	0	29	29
EPCT	0	41	0	0	41
ESOL	78	46	0	0	124
FDNS	0	0	167	0	167
FIRS	0	105	0	0	105
FIRT	0	144	0	0	144
FLMC	57	0	0	0	57
FREN	91	1	24	79	195
FSHN	22	0	0	0	22
GAME	36	0	0	46	82
GEOG	140	206	111	75	532
GEOL	363	280	371	213	1227
GERM	54	0	0	0	54
GISC	0	0	54	0	54
GOVT	2092	1154	2188	1782	7216
HALT	0	89	0	0	89
HAMG	0	0	79	0	79
HART	0	0	0	285	285
HECO	125	28	406	85	644
HIST	2013	1361	1908	2100	7382
HITT	33	0	0	0	33
HPRS	318	0	0	0	318
HRPO	37	18	42	69	166
HUMA	24	63	57	8	152
HYDR	0	0	0	10	10
IMED	20	0	0	0	20
INDS	0	0	17	0	17
INMT	0	0	0	12	12
ITCC	93	0	70	48	211
ITNW	35	0	0	14	49
ITSC	82	32	96	74	284
ITSE	78	12	47	47	184
ITSW	19	0	24	79	122
ITSY	26	0	16	31	73
LGLA	319	0	0	0	319
LTCA	63	0	0	0	63
MAIR	0	0	0	23	23

Department	Campus				Total
	NE	NW	SE	SO	
MATH	3392	2488	4016	2418	12314
MILI	0	0	0	36	36
MRKG	70	99	117	137	423
MTRC	0	0	0	9	9
MUAP	67	44	31	80	222
MUEN	75	8	47	72	202
MUSI	909	358	408	381	2056
OSHT	0	3	0	0	3
PBAD	0	66	0	0	66
PHED	1252	1064	1158	959	4433
PHIL	482	572	313	669	2036
PHTC	39	0	0	0	39
PHYS	281	84	244	125	734
POFI	17	73	25	57	172
POFT	192	83	218	249	742
PSTR	0	0	39	0	39
PSYC	1882	1185	1424	1212	5703
PSYT	97	0	0	0	97
PTHA	88	0	0	0	88
QCTC	0	0	0	13	13
RADR	176	0	0	0	176
RBTC	0	0	0	43	43
RDNG	356	277	422	587	1642
RELE	349	0	0	0	349
RNSG	0	0	0	1119	1119
RSPT	176	0	0	0	176
RSTO	0	0	51	0	51
RTVB	106	0	0	0	106
SLNG	0	306	0	0	306
SLPS	0	6	0	0	6
SMER	0	0	0	34	34
SOCI	894	533	1004	591	3022
SOCW	28	33	39	0	100
SPAN	606	307	432	380	1725
SPCH	2063	867	1093	906	4929
SRGT	96	0	0	0	96
TECA	303	0	0	0	303
WLDG	0	0	0	104	104
Total	34234	20532	27551	23948	106265

Section IV

Course Enrollments by Course Number By Campus

LIMITATIONS OF STATISTICAL HANDBOOK DATA

Section IV contains data on TCCD credit students for Fall 2007 (does not include Continuing Education students). This section is based on data from the Datatel/Colleague system. Minor differences are to be expected between Datatel/Colleague reports that are run at different times; thus this data may vary slightly from other Datatel/Colleague reports.

Minor differences are to be expected between the data in this section and the certified state reports.

Section IV excludes 10,314 enrollments in separate lab sections that are included in Section II. Section II contains 116,579 total enrollments for 2007FL. This section contains 106,265 enrollments.

Table 13. 2007FL Enrollments by Course					
	Campus				
Course	NE	NW	SE	SO	Total
ABDR-1207	0	0	0	30	30
ABDR-1291	0	0	0	29	29
ABDR-1419	0	0	0	30	30
ABDR-1431	0	0	0	29	29
ABDR-1555	0	0	0	25	25
ABDR-1558	0	0	0	27	27
ACCT-2301	301	181	322	187	991
ACCT-2302	118	52	107	92	369
ACNT-1303	20	26	0	46	92
ACNT-1311	15	20	0	17	52
ACNT-1313	42	0	0	16	58
ACNT-1331	0	0	25	20	45
ACNT-2303	0	18	0	10	28
ACNT-2309	0	0	0	25	25
ACNT-2380	2	0	0	0	2
AERM-1101	0	60	0	0	60
AERM-1191	0	61	0	0	61
AERM-1192	0	18	0	0	18
AERM-1205	0	44	0	0	44
AERM-1208	0	51	0	0	51
AERM-1240	0	39	0	0	39
AERM-1243	0	21	0	0	21
AERM-1254	0	17	0	0	17
AERM-1303	0	63	0	0	63
AERM-1310	0	69	0	0	69
AERM-1314	0	87	0	0	87
AERM-1315	0	61	0	0	61
AERM-1344	0	39	0	0	39
AERM-1345	0	29	0	0	29
AERM-1347	0	28	0	0	28
AERM-1349	0	30	0	0	30
AERM-1350	0	29	0	0	29
AERM-1351	0	28	0	0	28
AERM-1357	0	16	0	0	16

Course	Campus				Total
	NE	NW	SE	SO	
AERM-1456	0	37	0	0	37
AERM-2252	0	24	0	0	24
AERM-2351	0	9	0	0	9
AERM-2447	0	17	0	0	17
AGCR-1419	0	30	0	0	30
ANTH-2346	21	51	158	0	230
ARCE-1391	0	0	7	0	7
ARCH-1301	0	0	18	0	18
ARCH-1303	0	0	18	0	18
ARCH-1311	0	0	31	0	31
ARCH-1315	0	0	15	0	15
ARCH-2312	0	0	27	0	27
ARCT-1371	0	0	17	0	17
ARTC-1325	74	0	0	0	74
ARTC-1402	38	0	0	0	38
ARTC-1413	38	0	0	0	38
ARTC-1453	30	0	0	0	30
ARTC-2335	8	0	0	0	8
ARTC-2405	18	0	0	0	18
ARTC-2413	17	0	0	0	17
ARTC-2440	19	0	0	0	19
ARTS-1301	798	319	396	380	1893
ARTS-1303	93	0	56	25	174
ARTS-1304	0	0	30	0	30
ARTS-1311	88	52	25	18	183
ARTS-1312	20	0	0	9	29
ARTS-1316	132	55	58	52	297
ARTS-1317	13	17	10	6	46
ARTS-1320	0	16	19	0	35
ARTS-2313	9	0	11	9	29
ARTS-2314	0	0	2	0	2
ARTS-2316	40	19	43	44	146
ARTS-2317	17	7	8	2	34
ARTS-2323	5	3	0	0	8
ARTS-2326	12	8	13	8	41
ARTS-2327	0	0	2	0	2

Course	Campus				Total
	NE	NW	SE	SO	
ARTS-2333	10	0	10	0	20
ARTS-2334	2	0	2	0	4
ARTS-2346	47	26	39	30	142
ARTS-2347	28	14	6	1	49
ARTS-2348	0	13	14	0	27
ARTS-2356	162	0	0	0	162
ARTS-2357	32	0	0	0	32
ARTS-2366	0	0	0	6	6
ARTV-1403	19	0	0	0	19
AUMT-1253	0	0	0	35	35
AUMT-1257	0	0	0	34	34
AUMT-1307	0	0	0	35	35
AUMT-1310	0	0	0	34	34
AUMT-1313	0	0	0	18	18
AUMT-1349	0	0	0	8	8
AUMT-1357	0	0	0	19	19
AUMT-1380	0	0	0	20	20
AUMT-2209	0	0	0	40	40
AUMT-2223	0	0	0	37	37
AUMT-2313	0	0	0	40	40
AUMT-2315	0	0	0	8	8
AUMT-2325	0	0	0	37	37
AUMT-2380	0	0	0	8	8
BCIS-1405	349	337	204	227	1117
BIOL-1406	219	78	123	121	541
BIOL-1407	40	20	33	18	111
BIOL-1408	751	251	268	329	1599
BIOL-1409	210	24	95	70	399
BIOL-2306	24	0	0	0	24
BIOL-2316	0	40	23	13	76
BIOL-2401	739	428	545	458	2170
BIOL-2402	284	121	171	93	669
BIOL-2420	255	130	272	115	772
BMGT-1268	0	14	0	0	14
BMGT-1301	47	0	21	0	68
BMGT-1303	74	54	71	77	276

Course	Campus				Total
	NE	NW	SE	SO	
BMGT-1305	24	28	0	4	56
BMGT-1382	4	0	0	0	4
BMGT-2172	0	14	0	0	14
BMGT-2188	0	14	0	0	14
BMGT-2309	16	0	0	9	25
BMGT-2473	0	14	0	0	14
BMGT-2574	0	15	0	0	15
BUSG-1302	22	0	0	0	22
BUSG-1315	0	43	0	0	43
BUSG-1341	0	23	0	0	23
BUSG-2300	0	0	14	10	24
BUSG-2309	0	48	0	0	48
BUSI-1301	272	147	314	226	959
BUSI-1307	139	17	15	0	171
BUSI-1311	0	14	10	24	48
BUSI-2301	64	20	94	31	209
BUSI-2302	11	49	0	0	60
CDEC-1317	16	0	0	0	16
CDEC-1321	43	0	0	0	43
CDEC-1356	34	0	0	0	34
CDEC-1358	30	0	0	0	30
CDEC-1359	49	0	0	0	49
CDEC-1413	3	0	0	0	3
CDEC-1419	13	0	0	0	13
CDEC-2326	18	0	0	0	18
CETT-1409	0	0	0	65	65
CETT-1431	0	0	0	12	12
CETT-1449	0	0	0	60	60
CETT-1457	0	0	0	9	9
CETT-2435	0	0	0	14	14
CHEF-1205	0	0	60	0	60
CHEF-1264	0	0	8	0	8
CHEF-1301	0	0	39	0	39
CHEF-1310	0	0	12	0	12
CHEF-1314	0	0	17	0	17
CHEF-1345	0	0	11	0	11

Course	Campus				Total
	NE	NW	SE	SO	
CHEM-1405	95	22	26	46	189
CHEM-1406	263	193	302	189	947
CHEM-1407	25	0	0	0	25
CHEM-1411	235	90	264	66	655
CHEM-1412	54	8	44	16	122
CHEM-2423	36	31	74	13	154
CHEM-2425	21	0	0	0	21
CJLE-1111	0	9	0	0	9
CJLE-1394	0	19	0	0	19
CJLE-1506	0	9	0	0	9
CJLE-1512	0	9	0	0	9
CJLE-1518	0	9	0	0	9
CJLE-2247	0	9	0	0	9
CJSA-1347	0	9	0	0	9
CJSA-1348	0	16	0	0	16
CJSA-1393	0	7	0	0	7
CJSA-2334	0	21	0	0	21
CJSA-2388	0	4	0	0	4
CNBT-1342	0	0	18	0	18
CNBT-1346	0	0	20	0	20
CNBT-1371	0	0	19	0	19
CNBT-1444	0	0	24	0	24
CNBT-2266	0	0	1	0	1
CNBT-2342	0	0	20	0	20
COMM-1307	53	16	54	59	182
COMM-1316	12	0	0	0	12
COMM-1335	48	0	0	0	48
COMM-2305	5	0	0	0	5
COMM-2311	32	0	0	0	32
COMM-2332	4	0	0	0	4
COMM-2339	17	0	0	0	17
COMM-2366	8	0	0	0	8
COSC-1401	545	211	613	503	1872
COSC-1420	10	24	0	0	34
COSC-1436	95	33	47	32	207
COSC-1437	30	0	12	0	42

Course	Campus				Total
	NE	NW	SE	SO	
CPMT-1405	15	0	0	0	15
CPMT-1411	0	0	0	35	35
CPMT-1449	0	0	0	23	23
CPMT-2402	13	0	0	0	13
CPMT-2433	0	0	0	3	3
CRIJ-1301	0	141	0	0	141
CRIJ-1306	0	42	0	0	42
CRIJ-1307	0	49	0	0	49
CRIJ-1310	0	64	0	0	64
CRIJ-1313	0	14	0	0	14
CRIJ-2313	0	37	0	0	37
CRIJ-2314	0	52	0	0	52
CRIJ-2323	0	32	0	0	32
CRIJ-2328	0	37	0	0	37
DAAC-1304	33	0	0	0	33
DAAC-2166	6	0	0	0	6
DAAC-2266	7	0	0	0	7
DAAC-2307	35	0	0	0	35
DAAC-2341	27	0	0	0	27
DAAC-2343	15	0	0	0	15
DANC-1141	7	14	0	0	21
DANC-1142	2	0	0	0	2
DANC-1145	3	9	0	0	12
DANC-1146	1	0	0	0	1
DANC-1147	13	7	0	0	20
DANC-1148	4	5	0	0	9
DANC-1151	0	27	0	12	39
DANC-1301	0	6	0	0	6
DANC-1341	11	9	31	14	65
DANC-1342	3	12	0	6	21
DANC-1345	21	25	16	44	106
DANC-1346	3	8	0	6	17
DANC-1347	22	30	28	56	136
DANC-1348	2	7	0	11	20
DANC-2141	0	10	0	0	10
DANC-2145	0	10	0	0	10

Course	Campus				Total
	NE	NW	SE	SO	
DANC-2151	0	7	0	0	7
DANC-2152	11	13	0	0	24
DANC-2303	18	97	23	0	138
DFTG-1405	0	0	0	42	42
DFTG-1409	0	0	0	36	36
DFTG-1417	0	0	0	17	17
DFTG-1445	0	0	0	10	10
DFTG-1458	0	0	0	11	11
DFTG-1491	0	0	0	17	17
DFTG-2402	0	0	0	12	12
DFTG-2419	0	0	0	10	10
DFTG-2423	0	0	0	15	15
DFTG-2430	0	0	0	15	15
DFTG-2440	0	0	0	8	8
DHYG-1207	28	0	0	0	28
DHYG-1235	24	0	0	0	24
DHYG-1239	24	0	0	0	24
DHYG-1301	28	0	0	0	28
DHYG-1311	24	0	0	0	24
DHYG-1315	24	0	0	0	24
DHYG-1327	28	0	0	0	28
DHYG-1431	29	0	0	0	29
DHYG-2360	24	0	0	0	24
DRAM-1120	20	20	10	17	67
DRAM-1121	0	5	6	0	11
DRAM-1161	0	0	19	0	19
DRAM-1310	193	171	197	35	596
DRAM-1320	15	0	0	0	15
DRAM-1330	0	2	0	11	13
DRAM-1351	30	24	60	17	131
DRAM-1352	7	0	0	0	7
DRAM-2331	0	0	0	1	1
DRAM-2336	0	12	0	0	12
DRAM-2351	6	0	0	0	6
DRAM-2366	24	45	75	48	192
ECON-2301	412	329	722	550	2013

Course	Campus				Total
	NE	NW	SE	SO	
ECON-2302	156	87	226	210	679
EDUC-1301	23	0	0	40	63
EDUC-2301	24	0	0	10	34
EECT-2439	0	0	0	17	17
ELMT-2435	0	0	0	1	1
EMSP-1160	90	0	0	0	90
EMSP-1355	8	0	0	0	8
EMSP-1356	22	0	0	0	22
EMSP-1438	22	0	0	0	22
EMSP-1501	91	0	0	0	91
EMSP-2160	21	0	0	0	21
EMSP-2161	8	0	0	0	8
EMSP-2243	25	0	0	0	25
EMSP-2267	23	0	0	0	23
EMSP-2444	8	0	0	0	8
ENGL-0324	198	126	165	238	727
ENGL-0325	33	35	49	88	205
ENGL-1301	2498	1436	2041	1155	7130
ENGL-1302	1462	510	894	714	3580
ENGL-2307	25	105	51	48	229
ENGL-2308	11	32	0	0	43
ENGL-2311	0	90	0	0	90
ENGL-2322	33	23	102	150	308
ENGL-2323	0	0	33	48	81
ENGL-2327	133	22	208	103	466
ENGL-2328	111	56	100	134	401
ENGL-2332	117	83	112	28	340
ENGL-2333	40	23	35	79	177
ENGR-1201	0	0	37	15	52
ENGR-1304	0	0	56	14	70
ENGR-2301	0	0	13	13	26
ENGR-2302	0	0	14	7	21
ENGR-2305	0	0	23	9	32
ENTC-1423	0	0	0	14	14
ENTC-2331	0	0	0	15	15
EPCT-1243	0	11	0	0	11

Course	Campus				Total
	NE	NW	SE	SO	
EPCT-1247	0	11	0	0	11
EPCT-1311	0	2	0	0	2
EPCT-1341	0	6	0	0	6
EPCT-1440	0	10	0	0	10
EPCT-2267	0	1	0	0	1
ESOL-0301	1	0	0	0	1
ESOL-0311	13	6	0	0	19
ESOL-0312	12	11	0	0	23
ESOL-0313	15	14	0	0	29
ESOL-0314	12	5	0	0	17
ESOL-0315	9	3	0	0	12
ESOL-0316	8	7	0	0	15
ESOL-0321	8	0	0	0	8
FDNS-1103	0	0	33	0	33
FDNS-1309	0	0	25	0	25
FDNS-1341	0	0	25	0	25
FDNS-1345	0	0	10	0	10
FDNS-1346	0	0	12	0	12
FDNS-1371	0	0	23	0	23
FDNS-2164	0	0	10	0	10
FDNS-2400	0	0	29	0	29
FIRS-1301	0	21	0	0	21
FIRS-1313	0	21	0	0	21
FIRS-1319	0	21	0	0	21
FIRS-1323	0	21	0	0	21
FIRS-1329	0	21	0	0	21
FIRT-1301	0	22	0	0	22
FIRT-1307	0	20	0	0	20
FIRT-1311	0	21	0	0	21
FIRT-1331	0	16	0	0	16
FIRT-1333	0	25	0	0	25
FIRT-1338	0	21	0	0	21
FIRT-1349	0	8	0	0	8
FIRT-1391	0	3	0	0	3
FIRT-2333	0	6	0	0	6
FIRT-2388	0	2	0	0	2

Course	Campus				Total
	NE	NW	SE	SO	
FLMC-1311	19	0	0	0	19
FLMC-1431	38	0	0	0	38
FREN-1100	13	0	0	7	20
FREN-1110	3	0	0	1	4
FREN-1411	54	0	24	50	128
FREN-1412	0	0	0	21	21
FREN-2311	21	1	0	0	22
FSHN-2309	22	0	0	0	22
GAME-1304	16	0	0	23	39
GAME-1403	20	0	0	23	43
GEOG-1301	92	23	0	0	115
GEOG-1302	0	25	35	22	82
GEOG-1303	48	158	76	53	335
GEOL-1305	0	23	0	0	23
GEOL-1401	22	91	0	0	113
GEOL-1403	254	129	277	149	809
GEOL-1404	64	24	74	64	226
GEOL-1405	0	13	0	0	13
GEOL-1445	23	0	20	0	43
GERM-1411	43	0	0	0	43
GERM-2311	11	0	0	0	11
GISC-1402	0	0	20	0	20
GISC-2402	0	0	12	0	12
GISC-2411	0	0	14	0	14
GISC-2420	0	0	8	0	8
GOVT-2305	1213	696	1368	867	4144
GOVT-2306	879	458	820	915	3072
HALT-1301	0	21	0	0	21
HALT-1422	0	10	0	0	10
HALT-2308	0	7	0	0	7
HALT-2315	0	10	0	0	10
HALT-2318	0	27	0	0	27
HALT-2323	0	14	0	0	14
HAMG-1321	0	0	29	0	29
HAMG-1340	0	0	29	0	29
HAMG-2307	0	0	21	0	21

Course	Campus				Total
	NE	NW	SE	SO	
HART-1401	0	0	0	60	60
HART-1403	0	0	0	13	13
HART-1407	0	0	0	56	56
HART-1445	0	0	0	16	16
HART-2431	0	0	0	22	22
HART-2436	0	0	0	16	16
HART-2438	0	0	0	35	35
HART-2442	0	0	0	16	16
HART-2445	0	0	0	34	34
HART-2449	0	0	0	17	17
HECO-1315	0	0	39	0	39
HECO-1322	105	28	367	85	585
HECO-2311	20	0	0	0	20
HIST-1301	1137	744	1123	1099	4103
HIST-1302	734	543	694	854	2825
HIST-2301	74	0	0	67	141
HIST-2311	68	25	64	59	216
HIST-2321	0	49	27	21	97
HITT-1401	13	0	0	0	13
HITT-1445	13	0	0	0	13
HITT-2260	7	0	0	0	7
HPRS-1206	191	0	0	0	191
HPRS-2200	92	0	0	0	92
HPRS-2201	24	0	0	0	24
HPRS-2331	11	0	0	0	11
HRPO-1311	37	10	0	47	94
HRPO-2301	0	8	42	22	72
HUMA-1301	0	46	0	0	46
HUMA-1315	24	17	57	8	106
HYDR-1345	0	0	0	10	10
IMED-1416	20	0	0	0	20
INDS-1341	0	0	17	0	17
INMT-1319	0	0	0	12	12
ITCC-1402	40	0	42	19	101
ITCC-1406	36	0	28	12	76
ITCC-1442	0	0	0	11	11

Course	Campus				Total
	NE	NW	SE	SO	
ITCC-1446	0	0	0	6	6
ITCC-2432	17	0	0	0	17
ITNW-1408	12	0	0	14	26
ITNW-1451	10	0	0	0	10
ITNW-1454	12	0	0	0	12
ITNW-1471	1	0	0	0	1
ITSC-1405	53	12	49	37	151
ITSC-1407	15	0	16	24	55
ITSC-1415	0	0	0	13	13
ITSC-1425	14	20	25	0	59
ITSC-2439	0	0	6	0	6
ITSE-1411	16	12	11	47	86
ITSE-1450	0	0	15	0	15
ITSE-2402	30	0	0	0	30
ITSE-2409	13	0	0	0	13
ITSE-2417	8	0	21	0	29
ITSE-2449	11	0	0	0	11
ITSW-1407	19	0	24	42	85
ITSW-1410	0	0	0	37	37
ITSY-1400	15	0	10	20	45
ITSY-2400	5	0	6	0	11
ITSY-2401	6	0	0	11	17
LGLA-1303	56	0	0	0	56
LGLA-1305	38	0	0	0	38
LGLA-1307	60	0	0	0	60
LGLA-1345	35	0	0	0	35
LGLA-1353	55	0	0	0	55
LGLA-2303	63	0	0	0	63
LGLA-2380	12	0	0	0	12
LTCA-1311	12	0	0	0	12
LTCA-1312	15	0	0	0	15
LTCA-1313	12	0	0	0	12
LTCA-2314	12	0	0	0	12
LTCA-2315	12	0	0	0	12
MAIR-1449	0	0	0	23	23
MATH-0302	548	590	651	434	2223

Course	Campus				Total
	NE	NW	SE	SO	
MATH-0304	699	546	662	540	2447
MATH-0350	926	711	1026	575	3238
MATH-1314	521	318	700	411	1950
MATH-1316	139	47	171	65	422
MATH-1324	113	30	103	43	289
MATH-1325	117	38	108	73	336
MATH-1332	14	24	14	16	68
MATH-1342	132	84	280	146	642
MATH-1350	20	21	28	39	108
MATH-1351	12	9	0	0	21
MATH-2315	13	6	56	0	75
MATH-2412	52	41	63	21	177
MATH-2414	37	14	63	9	123
MATH-2513	49	9	91	46	195
MILI-0041	0	0	0	7	7
MILI-0042	0	0	0	11	11
MILI-1001	0	0	0	18	18
MRKG-1302	0	31	14	0	45
MRKG-1311	55	43	103	127	328
MRKG-2348	0	0	0	10	10
MRKG-2349	15	25	0	0	40
MTRC-1405	0	0	0	9	9
MUAP-1190	12	23	8	37	80
MUAP-1191	0	1	0	2	3
MUAP-1290	22	14	15	24	75
MUAP-1291	19	6	2	9	36
MUAP-1292	7	0	4	4	15
MUAP-2291	6	0	2	4	12
MUAP-2292	1	0	0	0	1
MUEN-1121	0	0	0	24	24
MUEN-1122	17	0	8	0	25
MUEN-1132	4	0	0	0	4
MUEN-1133	28	0	21	0	49
MUEN-1141	20	0	18	27	65
MUEN-1142	0	8	0	0	8
MUEN-1152	0	0	0	21	21

Course	Campus				Total
	NE	NW	SE	SO	
MUEN-2131	6	0	0	0	6
MUSI-1157	7	0	0	0	7
MUSI-1160	5	0	0	0	5
MUSI-1163	7	0	0	0	7
MUSI-1164	1	0	0	0	1
MUSI-1181	46	11	29	31	117
MUSI-1182	10	0	0	1	11
MUSI-1183	6	0	0	7	13
MUSI-1192	19	5	11	6	41
MUSI-1211	15	10	15	19	59
MUSI-1216	18	9	17	19	63
MUSI-1286	9	0	0	0	9
MUSI-1301	81	12	82	46	221
MUSI-1306	626	286	226	241	1379
MUSI-1308	21	7	13	0	41
MUSI-1390	26	11	15	11	63
MUSI-2211	7	3	0	0	10
MUSI-2216	5	4	0	0	9
OSHT-2501	0	3	0	0	3
PBAD-1315	0	19	0	0	19
PBAD-1345	0	17	0	0	17
PBAD-1370	0	21	0	0	21
PBAD-2341	0	9	0	0	9
PHED-1102	25	35	0	16	76
PHED-1104	32	0	34	11	77
PHED-1105	0	6	0	0	6
PHED-1107	49	0	35	0	84
PHED-1111	27	15	19	0	61
PHED-1112	0	0	0	12	12
PHED-1113	41	85	21	0	147
PHED-1115	19	0	0	0	19
PHED-1117	0	17	0	0	17
PHED-1118	0	6	0	0	6
PHED-1120	7	0	40	0	47
PHED-1121	8	7	0	0	15
PHED-1122	22	5	20	7	54

Course	Campus				Total
	NE	NW	SE	SO	
PHED-1123	0	2	0	0	2
PHED-1124	0	1	0	0	1
PHED-1125	12	10	12	10	44
PHED-1126	0	5	0	0	5
PHED-1128	0	0	14	7	21
PHED-1129	9	43	0	0	52
PHED-1130	0	0	0	21	21
PHED-1131	11	0	0	12	23
PHED-1132	0	10	0	0	10
PHED-1133	47	62	107	76	292
PHED-1134	83	54	47	66	250
PHED-1136	3	0	0	0	3
PHED-1139	12	0	0	0	12
PHED-1140	4	5	0	0	9
PHED-1141	1	0	0	0	1
PHED-1142	1	5	0	0	6
PHED-1143	0	1	0	0	1
PHED-1144	0	1	0	0	1
PHED-1145	0	1	0	0	1
PHED-1148	59	19	36	48	162
PHED-1164	618	564	621	539	2342
PHED-1252	25	0	0	0	25
PHED-1304	0	0	24	0	24
PHED-1306	21	0	18	23	62
PHED-1338	22	38	21	16	97
PHED-2102	6	4	0	2	12
PHED-2104	4	0	7	3	14
PHED-2105	0	2	0	0	2
PHED-2106	0	0	0	18	18
PHED-2107	8	0	3	0	11
PHED-2111	9	5	3	0	17
PHED-2112	0	0	0	2	2
PHED-2113	4	14	2	0	20
PHED-2115	3	0	0	0	3
PHED-2117	0	2	0	0	2
PHED-2120	2	0	7	0	9

Course	Campus				Total
	NE	NW	SE	SO	
PHED-2121	3	1	0	0	4
PHED-2122	9	4	2	4	19
PHED-2123	0	0	3	0	3
PHED-2125	8	1	3	2	14
PHED-2126	0	4	2	0	6
PHED-2128	0	0	6	6	12
PHED-2129	3	8	0	0	11
PHED-2130	0	0	0	4	4
PHED-2131	1	0	0	2	3
PHED-2133	16	14	43	32	105
PHED-2134	12	6	4	12	34
PHED-2148	6	2	4	8	20
PHIL-1301	360	399	150	210	1119
PHIL-1304	42	173	34	209	458
PHIL-1316	41	0	34	49	124
PHIL-2303	0	0	22	26	48
PHIL-2306	39	0	73	175	287
PHTC-1300	17	0	0	0	17
PHTC-1343	11	0	0	0	11
PHTC-1353	11	0	0	0	11
PHYS-1401	104	59	85	59	307
PHYS-1402	26	0	19	0	45
PHYS-1411	61	18	0	57	136
PHYS-1412	23	0	29	0	52
PHYS-1415	22	0	0	0	22
PHYS-2425	34	7	51	9	101
PHYS-2426	11	0	60	0	71
POFI-1449	17	53	0	24	94
POFI-2401	0	0	25	21	46
POFI-2431	0	20	0	12	32
POFT-1127	88	22	52	48	210
POFT-1309	12	0	25	15	52
POFT-1319	0	24	0	0	24
POFT-1321	42	14	99	107	262
POFT-1329	11	0	13	57	81
POFT-1331	21	0	0	0	21

Course	Campus				Total
	NE	NW	SE	SO	
POFT-1392	0	0	17	0	17
POFT-2301	2	23	12	8	45
POFT-2312	16	0	0	14	30
PSTR-1401	0	0	39	0	39
PSYC-1110	0	0	122	0	122
PSYC-1301	295	147	127	256	825
PSYC-2301	1082	645	836	635	3198
PSYC-2302	36	23	17	63	139
PSYC-2306	40	50	0	23	113
PSYC-2308	84	113	81	72	350
PSYC-2314	227	169	159	150	705
PSYC-2315	32	0	0	0	32
PSYC-2316	33	38	0	0	71
PSYC-2318	32	0	0	0	32
PSYC-2319	21	0	82	13	116
PSYT-1345	30	0	0	0	30
PSYT-2165	2	0	0	0	2
PSYT-2331	34	0	0	0	34
PSYT-2370	31	0	0	0	31
PTHA-1321	17	0	0	0	17
PTHA-1431	17	0	0	0	17
PTHA-2409	18	0	0	0	18
PTHA-2431	18	0	0	0	18
PTHA-2462	18	0	0	0	18
QCTC-1448	0	0	0	13	13
RADR-1266	31	0	0	0	31
RADR-1313	31	0	0	0	31
RADR-2301	32	0	0	0	32
RADR-2309	27	0	0	0	27
RADR-2333	28	0	0	0	28
RADR-2366	27	0	0	0	27
RBTC-1401	0	0	0	32	32
RBTC-1447	0	0	0	11	11
RDNG-0160	0	0	0	12	12
RDNG-0361	323	245	325	504	1397
RDNG-0363	33	32	97	71	233

Course	Campus				Total
	NE	NW	SE	SO	
RELE-1301	85	0	0	0	85
RELE-1303	24	0	0	0	24
RELE-1307	33	0	0	0	33
RELE-1311	65	0	0	0	65
RELE-1315	36	0	0	0	36
RELE-1319	28	0	0	0	28
RELE-2301	78	0	0	0	78
RNSG-1105	0	0	0	119	119
RNSG-1360	0	0	0	121	121
RNSG-1441	0	0	0	109	109
RNSG-1443	0	0	0	90	90
RNSG-1461	0	0	0	110	110
RNSG-1513	0	0	0	121	121
RNSG-2201	0	0	0	90	90
RNSG-2208	0	0	0	89	89
RNSG-2260	0	0	0	89	89
RNSG-2261	0	0	0	91	91
RNSG-2461	0	0	0	90	90
RSPT-1101	30	0	0	0	30
RSPT-1166	30	0	0	0	30
RSPT-1429	30	0	0	0	30
RSPT-2133	21	0	0	0	21
RSPT-2210	22	0	0	0	22
RSPT-2266	22	0	0	0	22
RSPT-2405	21	0	0	0	21
RSTO-1306	0	0	33	0	33
RSTO-1325	0	0	18	0	18
RTVB-1401	12	0	0	0	12
RTVB-1405	38	0	0	0	38
RTVB-1409	29	0	0	0	29
RTVB-1425	25	0	0	0	25
RTVB-2487	2	0	0	0	2
SLNG-1215	0	74	0	0	74
SLNG-1347	0	68	0	0	68
SLNG-1404	0	91	0	0	91
SLNG-1444	0	45	0	0	45

Course	Campus				Total
	NE	NW	SE	SO	
SLNG-2166	0	13	0	0	13
SLNG-2401	0	7	0	0	7
SLNG-2402	0	8	0	0	8
SLPS-1371	0	5	0	0	5
SLPS-2288	0	1	0	0	1
SMER-1404	0	0	0	5	5
SMER-1425	0	0	0	11	11
SMER-1428	0	0	0	14	14
SMER-2450	0	0	0	4	4
SOCI-1301	862	488	768	552	2670
SOCI-1306	32	0	30	0	62
SOCI-2301	0	45	137	28	210
SOCI-2319	0	0	30	0	30
SOCI-2326	0	0	0	11	11
SOCI-2336	0	0	39	0	39
SOCW-2361	28	33	39	0	100
SPAN-1100	54	35	0	0	89
SPAN-1110	8	0	0	0	8
SPAN-1411	316	162	280	242	1000
SPAN-1412	124	42	55	86	307
SPAN-2106	9	0	0	0	9
SPAN-2311	95	54	60	38	247
SPAN-2312	0	14	37	14	65
SPCH-1144	10	0	0	0	10
SPCH-1311	1335	482	684	447	2948
SPCH-1315	203	28	52	0	283
SPCH-1318	81	97	29	80	287
SPCH-1321	422	260	328	362	1372
SPCH-1342	0	0	0	17	17
SPCH-2144	2	0	0	0	2
SPCH-2333	10	0	0	0	10
SRGT-1266	32	0	0	0	32
SRGT-1405	32	0	0	0	32
SRGT-1409	32	0	0	0	32
TECA-1303	78	0	0	0	78
TECA-1311	72	0	0	0	72

Course	Campus				Total
	NE	NW	SE	SO	
TECA-1318	69	0	0	0	69
TECA-1354	84	0	0	0	84
WLDG-1412	0	0	0	12	12
WLDG-1428	0	0	0	46	46
WLDG-1430	0	0	0	31	31
WLDG-1434	0	0	0	15	15
Total	34234	20532	27551	23948	106265