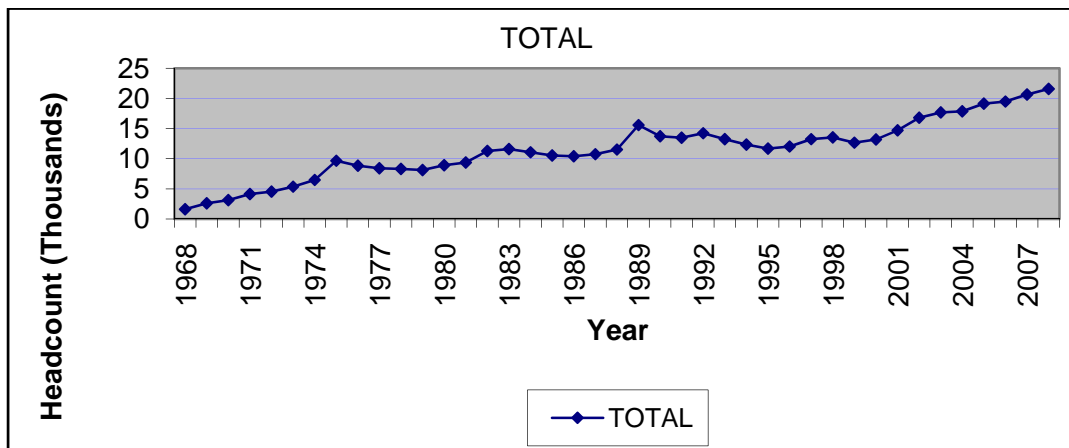


STATISTICAL HANDBOOK

2008SU

HEADCOUNT ENROLLMENTS SUMMER SEMESTERS -- 1968 – PRESENT



Office of Institutional Research

Tarrant County College

Table of Contents

TCCD 2008 Summer Semester Statistical Handbook

	Page
Introduction	1
Section I: Historical Data	2
Table 1. Headcount and Full-Time Equivalent	3
Figure 1. Headcount Enrollments by Campus, Summer Semesters	4
Section II: Demographic Data	5
Table	
2. 2008 Summer Headcount, Enrollments, Contact Hours, and Semester Hours	6
3. 2008 Summer – Ethnicity by Gender – District	7
4. 2008 Summer – Ethnicity by Gender – South	8
5. 2008 Summer – Ethnicity by Gender – Northeast	9
6. 2008 Summer – Ethnicity by Gender – Northwest	10
7. 2008 Summer – Ethnicity by Gender – Southeast	11
8. Average Age by Campus – Separated by Age Group	12
8a. Average Age by Campus – Mean	12
9. Students by Zip Code	13
10. Full/Part Time for District	16
11. Full/Part Time by Campus	16
Section III: Course Enrollments by Department by Campus	17
Table	
12. Enrollments by Department	18
Section IV: Course Enrollments by Course Number by Campus	20
Table	
13. Enrollments by Course	21

INTRODUCTION

This statistical handbook contains data on TCCD credit students for Summer 2008. It does not include Continuing Education students.

Table 2 contains information related to the source of the data in this report and how the data in this report relates to data in other reports such as the certified state reports. Minor differences are to be expected between Datatel/*Colleague* reports that are run at different times; this data may vary slightly from other Datatel/*Colleague* reports. Audit enrollments are included in this report.

If there are questions about this statistical handbook, please contact the TCCD Office of Institutional Research.

Section I

HISTORICAL DATA

LIMITATIONS OF STATISTICAL HANDBOOK DATA

Section I contains data on TCCD credit students for Summer 2008 (does not include Continuing Education students).

This section is based on data collected from the Datatel/*Colleague* system for all semesters beginning in the year 2004. All data identified which is prior to 2004 was collected utilizing the Legacy system. Minor differences are to be expected between Datatel/*Colleague* reports that are run at different times; thus this data may vary slightly from other Datatel/*Colleague* reports.

Minor differences are to be expected between the data in this section and the certified state reports.

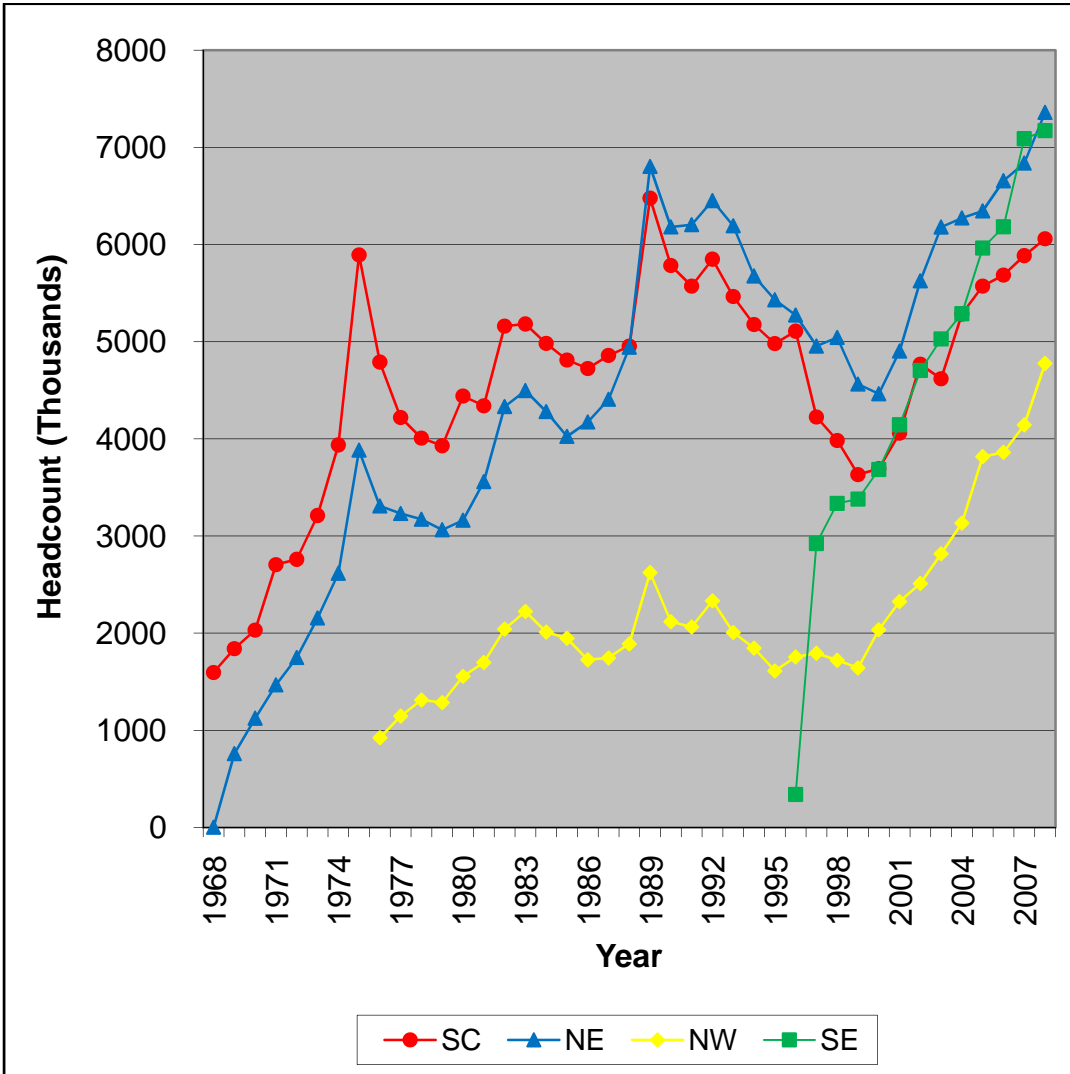
**TABLE 1--SUMMER SEMESTERS
HEADCOUNT AND FULL-TIME EQUIVALENT**

YEAR	District Total	Campus Totals		South			Northeast			Northwest			Southeast		
		HC	FTE	HC	FTE	% of Total	HC	FTE	% of Total	HC	FTE	% of Total	HC	FTE	% of Total
1976-77	8404	8600	3792.5	4220	1829	48.227	3231	1440	37.97	1147	523.5	13.804			
1977-78	8293	8492	3830	4007	1875	48.956	3172	1386	36.188	1313	569	14.856			
1978-79	8107	8279	3464	3929	1754.5	50.65	3064	1219.5	35.205	1286	490	14.145			
1979-80	8907	9158	4034.5	4440	2010.5	49.833	3162	1356.5	33.623	1556	667.5	16.545			
1980-81	9358	9598	4234	4340	1998	47.189	3559	1504	35.522	1698	732	17.289			
1981-82	11260	11534	5115.5	5160	2355	46.037	4332	1884	36.829	2042	876.5	17.134			
1982-83	11585	11903	5293	5182	2372.5	44.823	4497	1925.5	36.378	2223	995	18.798			
1983-84	11065	11273	4808	4982	2157	44.863	4280	1797	37.375	2011	854	17.762			
1984-85	10528	10784	4596	4811	2110.5	45.92	4025	1675	36.445	1948	810.5	17.635			
1985-86	10394	10623	4673	4724	2111	45.174	4173	1813	38.797	1726	749	16.028			
1986-87	10745	11010	4827.5	4858	2187.5	45.313	4407	1915.5	39.679	1745	724.5	15.008			
1987-88	11514	11787	5212.5	4954	2217	42.532	4943	2194.5	42.101	1890	801	15.367			
1988-89	15581	15905	6431.5	6477	2653	41.25	6804	2733.5	42.502	2624	1045	16.248			
1989-90	13704	14083	6241	5784	2592	41.532	6181	2731	43.759	2118	918	14.709			
1990-91	13470	13840	6149.5	5572	2510.5	40.824	6204	2773	45.093	2064	866	14.082			
1991-92	14225	14634	6568.5	5849	2654.5	40.413	6452	2917.5	44.417	2333	996.5	15.171			
1992-93	13229	13664	6015	5464	2516	41.829	6193	2660	44.223	2007	839	13.948			
1993-94	12325	12698	5646.5	5176	2349.5	41.61	5676	2505	44.364	1846	792	14.026			
1994-95	11670	12023	5352.5	4980	2292.5	42.83	5431	2385	44.559	1612	675	12.611			
1995-96	12021	12478	5375	5108	2257.5	42	5274	2294	42.679	1755	740	13.767	341	83.5	
1996-97	13242	13897	6029.5	4225	1887	31.296	4955	2160	35.824	1794	723.5	11.999	2923	1259	20.881
1997-98	13523	14084	6245	3983	1765.5	28.271	5043	2240	35.869	1722	725	11.609	3336	1513.5	24.235
1998-99	12661	13218	5829	3632	1626.5	27.904	4564	2000	34.311	1642	673	11.546	3380	1529.5	26.239
1999-00	13182	13876	6008	3692	1640.5	27.305	4464	1916	31.891	2035	807	13.432	3685	1644.5	27.372
2000-01	14688	15433	6679	4059	1774	26.561	4904	2113.5	31.644	2325	966	14.463	4145	1825.5	27.332
2001-02	16786	17609	7781.5	4768	2053.5	26.39	5626	2483.5	31.915	2511	1047	13.455	4704	2197.5	28.24
2002-03	17668	18643	8036	4618	1967.5	24.484	6180	2661	33.113	2817	1169.5	14.553	5028	2238	27.85
2003-04	17844	19977	8411	5284	2202	26.18	6273	2606	30.983	3132	1252	14.885	5288	2351	27.951
2004-05	19129	21699	9043	5572	2296	25.39	6346	2611	28.873	3817	1501	16.598	5964	2635	29.139
2005-06	19484	22385	9191	5685	2307	25.101	6656	2715	29.54	3861	1500	16.32	6183	2669	29.039
2006-07	20643	23956	9680	5885	2345	24.225	6838	2730	28.202	4143	1588	16.405	7089	3018	31.178
2007-08	21571	25367	10032	6059	2350.7	23.432	7360	2908.4	28.991	4776	1816.6	18.108	7172	2956.3	29.469

Note: District total represents unduplicated headcount

Note: This report contains Legacy data for Summer I & Summer II semesters.

Figure 1. Headcount Enrollments by Campus, Summer Semesters
Summer 1968 to Summer 2008



Section II

DEMOGRAPHIC DATA

LIMITATIONS OF STATISTICAL HANDBOOK DATA

Section II contains data on TCCD credit students for Summer 2008 (does not include Continuing Education students). This section is based on data from the Datatel/Colleague system. Minor differences are to be expected between Datatel/Colleague reports that are run at different times; thus this data may vary slightly from other Datatel/Colleague reports.

Minor differences are to be expected between the data in this section and the certified state reports.

Table 2. 2008SU Headcount, Enrollments, Contact Hours, and Semester Hours

UG CONTACT HOURS AND HEADCOUNT

TERM: 2008SU

CAMPUS	HEADCOUNT	CREDIT STUDENTS		SEMESTER HOURS	FTE
		NUMBER OF ENROLLMENTS	CONTACT HOURS		
Northeast	7,360	12,709	681,096	34,901	2,908.4
Northwest	4,776	7,807	417,120	21,799	1,816.6
Southeast	7,172	12,740	632,200	35,476	2,956.3
South	6,059	10,095	513,504	28,208	2,350.7
Other	0	0	0	0	0
TOTAL (Dupl)	25,367	43,351	2,243,920	120,384	10,032
TOTAL (Undupl)	21,571				

Notes: This report was run on the Datatel/*Colleague* system using the semester as defined by the *Colleague* field Term.

This report includes all enrollments for the *Colleague* Term (semester) as of the run time. This data will differ from some other reports that only include enrollments in classes with an ODOR (Official Day of Record) on or before the official semester ODOR (i.e. some reports exclude some "miniterm" enrollments).

This report may differ from other *Colleague* reports with different run time/dates. The data in this Table 2 is based on an XUHS run made 8/13/2008.

This report will differ from the certified state reports. State reports use a different definition for semester.

Table 3. 2008SU Ethnicity by Gender TCCD District

		Gender		Total
		Female	Male	
White	Count	7306	4797	12103
	% within Ethnicity	60.4%	39.6%	100.0%
	% within Gender	54.8%	58.3%	56.1%
Black	Count	2485	1193	3678
	% within Ethnicity	67.6%	32.4%	100.0%
	% within Gender	18.6%	14.5%	17.1%
Hispanic	Count	2198	1241	3439
	% within Ethnicity	63.9%	36.1%	100.0%
	% within Gender	16.5%	15.1%	15.9%
Asian	Count	1096	815	1911
	% within Ethnicity	57.4%	42.6%	100.0%
	% within Gender	8.2%	9.9%	8.9%
Amer Indian	Count	65	34	99
	% within Ethnicity	65.7%	34.3%	100.0%
	% within Gender	.5%	.4%	.5%
International	Count	147	114	261
	% within Ethnicity	56.3%	43.7%	100.0%
	% within Gender	1.1%	1.4%	1.2%
No Data	Count	46	34	80
	% within Ethnicity	57.5%	42.5%	100.0%
	% within Gender	.3%	.4%	.4%
Total	Count	13343	8228	21571
	% within Ethnicity	61.9%	38.1%	100.0%
	% within Gender	100.0%	100.0%	100.0%

Table 4. 2008SU Ethnicity by Gender SO Campus

		Gender		Total
		Female	Male	
White	Count	2091	1165	3256
	% within Ethnicity	64.2%	35.8%	100.0%
	% within Gender	52.6%	55.8%	53.7%
Black	Count	902	382	1284
	% within Ethnicity	70.2%	29.8%	100.0%
	% within Gender	22.7%	18.3%	21.2%
Hispanic	Count	696	364	1060
	% within Ethnicity	65.7%	34.3%	100.0%
	% within Gender	17.5%	17.4%	17.5%
Asian	Count	220	133	353
	% within Ethnicity	62.3%	37.7%	100.0%
	% within Gender	5.5%	6.4%	5.8%
Amer Indian	Count	19	14	33
	% within Ethnicity	57.6%	42.4%	100.0%
	% within Gender	.5%	.7%	.5%
International	Count	33	24	57
	% within Ethnicity	57.9%	42.1%	100.0%
	% within Gender	.8%	1.2%	.9%
No Data	Count	12	4	16
	% within Ethnicity	75.0%	25.0%	100.0%
	% within Gender	.3%	.2%	.3%
Total	Count	3973	2086	6059
	% within Ethnicity	65.6%	34.4%	100.0%
	% within Gender	100.0%	100.0%	100.0%

Table 5. 2008SU Ethnicity by Gender NE Campus

		Gender		Total
		Female	Male	
White	Count	2868	1915	4783
	% within Ethnicity	60.0%	40.0%	100.0%
	% within Gender	64.0%	66.5%	65.0%
Black	Count	571	293	864
	% within Ethnicity	66.1%	33.9%	100.0%
	% within Gender	12.7%	10.2%	11.7%
Hispanic	Count	553	341	894
	% within Ethnicity	61.9%	38.1%	100.0%
	% within Gender	12.3%	11.8%	12.1%
Asian	Count	395	282	677
	% within Ethnicity	58.3%	41.7%	100.0%
	% within Gender	8.8%	9.8%	9.2%
Amer Indian	Count	33	6	39
	% within Ethnicity	84.6%	15.4%	100.0%
	% within Gender	.7%	.2%	.5%
International	Count	46	31	77
	% within Ethnicity	59.7%	40.3%	100.0%
	% within Gender	1.0%	1.1%	1.0%
No Data	Count	13	13	26
	% within Ethnicity	50.0%	50.0%	100.0%
	% within Gender	.3%	.5%	.4%
Total	Count	4479	2881	7360
	% within Ethnicity	60.9%	39.1%	100.0%
	% within Gender	100.0%	100.0%	100.0%

Table 6. 2008SU Ethnicity by Gender NW Campus

		Gender		Total
		Female	Male	
White	Count	1906	1120	3026
	% within Ethnicity	63.0%	37.0%	100.0%
	% within Gender	62.8%	64.4%	63.4%
Black	Count	319	135	454
	% within Ethnicity	70.3%	29.7%	100.0%
	% within Gender	10.5%	7.8%	9.5%
Hispanic	Count	591	334	925
	% within Ethnicity	63.9%	36.1%	100.0%
	% within Gender	19.5%	19.2%	19.4%
Asian	Count	168	111	279
	% within Ethnicity	60.2%	39.8%	100.0%
	% within Gender	5.5%	6.4%	5.8%
Amer Indian	Count	16	10	26
	% within Ethnicity	61.5%	38.5%	100.0%
	% within Gender	.5%	.6%	.5%
International	Count	29	20	49
	% within Ethnicity	59.2%	40.8%	100.0%
	% within Gender	1.0%	1.1%	1.0%
No Data	Count	7	10	17
	% within Ethnicity	41.2%	58.8%	100.0%
	% within Gender	.2%	.6%	.4%
Total	Count	3036	1740	4776
	% within Ethnicity	63.6%	36.4%	100.0%
	% within Gender	100.0%	100.0%	100.0%

Table 7. 2008SU Ethnicity by Gender SE Campus

		Gender		Total
		Female	Male	
White	Count	2024	1278	3302
	% within Ethnicity	61.3%	38.7%	100.0%
	% within Gender	44.7%	48.3%	46.0%
Black	Count	1196	540	1736
	% within Ethnicity	68.9%	31.1%	100.0%
	% within Gender	26.4%	20.4%	24.2%
Hispanic	Count	703	379	1082
	% within Ethnicity	64.9%	35.0%	100.0%
	% within Gender	15.5%	14.3%	15.1%
Asian	Count	502	371	873
	% within Ethnicity	57.5%	42.5%	100.0%
	% within Gender	11.1%	14.0%	12.2%
Amer Indian	Count	14	11	25
	% within Ethnicity	56.0%	44.0%	100.0%
	% within Gender	.3%	.4%	.3%
International	Count	64	56	120
	% within Ethnicity	53.3%	46.7%	100.0%
	% within Gender	1.4%	2.1%	1.7%
No Data	Count	23	11	34
	% within Ethnicity	67.6%	32.4%	100.0%
	% within Gender	.5%	.4%	.5%
Total	Count	4526	2646	7172
	% within Ethnicity	63.1%	36.9%	100.0%
	% within Gender	100.0%	100.0%	100.0%

Table 8. 2008SU Age by Campus

		Campus				Total
		NE	NW	SE	SO	
Under 21	Count	2922	1646	3121	2187	9876
		39.7%	34.5%	43.5%	36.1%	38.9%
21 - 25	Count	2153	1390	2089	1724	7356
		29.3%	29.1%	29.1%	28.5%	29.0%
26 – 30	Count	940	694	747	840	3221
		12.8%	14.5%	10.4%	13.9%	12.7%
31 – 35	Count	479	384	466	472	1801
		6.5%	8.0%	6.5%	7.8%	7.1%
36 – 40	Count	371	274	311	324	1280
		5.0%	5.7%	4.3%	5.3%	5.0%
Over 40	Count	495	388	438	512	1833
		6.7%	8.1%	6.1%	8.5%	7.2%
Total	Count	7360	4776	7172	6059	25367
		100.0%	100.0%	100.0%	100.0%	100.0%

Table 8A. 2008SU Average Age by Campus

NE	NW	SE	SO	TCCD
25.43	26.35	24.72	26.15	25.36*

* The TCCD average age of 25.36 is based on the average age of the unduplicated enrollment count of 21,571.

Table 9. 2008SU Students by ZIP Code

ZIP Code	Campus				Total
	NE	NW	SE	SO	
76248	597	247	89	147	1080
76180	643	143	60	113	959
76063	87	81	621	165	954
76017	107	47	563	219	936
76137	414	334	60	100	908
75052	69	49	612	99	829
76016	77	58	389	189	713
76018	63	43	513	68	687
76002	58	35	472	63	628
76179	102	395	50	80	627
76133	74	64	56	423	617
76001	62	37	376	101	576
76013	88	47	321	93	549
76021	357	62	52	76	547
76014	61	29	370	58	518
76123	45	54	49	333	481
76051	342	46	30	56	474
76010	57	24	315	54	450
76028	50	51	75	260	436
76116	43	160	51	171	425
76039	269	45	52	47	413
76108	60	236	34	78	408
76112	153	44	51	150	398
76034	287	40	20	49	396
76006	113	27	184	51	375
76092	275	42	15	40	372
76012	139	26	128	57	350
76132	42	66	40	199	347
76053	228	46	24	39	337
76015	49	20	196	55	320
76131	72	176	24	45	317
76148	180	70	24	38	312
76040	202	36	38	26	302
76036	29	40	32	198	299
76117	167	61	24	37	289
76106	49	184	26	26	285
76119	44	23	37	170	274
76135	46	172	19	34	271

ZIP Code	Campus				Total
	NE	NW	SE	SO	
76126	29	96	31	101	257
76134	23	23	33	167	246
76140	20	22	37	164	243
76110	34	25	15	153	227
76011	57	15	127	22	221
76107	33	70	27	83	213
76109	28	44	27	110	209
76114	27	126	22	34	209
76020	36	131	16	24	207
76054	150	20	12	17	199
76120	71	32	46	45	194
76022	117	26	11	32	186
76262	123	31	11	14	179
76118	115	12	14	23	164
76111	61	58	14	24	157
76052	36	80	17	13	146
75050	41	15	75	13	144
76103	30	26	13	50	119
76105	19	12	14	70	115
76115	8	16	8	82	114
76104	17	11	10	69	107
76060	15	10	35	43	103
76008	8	41	4	27	80
76009	16	8	17	35	76
75054	8	6	48	9	71
75051	11	5	39	10	65
76102	19	15	4	27	65
76058	8	16	6	34	64
76247	15	25	4	11	55
76164	7	32	2	8	49
76087	7	20	2	19	48
76155	25	4	9	8	46
76065	8	2	24	10	44
76084	4	5	26	8	43
75104	8	2	29	2	41
76082	7	23	2	7	39
76049	8	6	4	14	32
76078	11	8	5	7	31
76177	13	12	3	3	31
76085	3	17	0	7	27

ZIP Code	Campus				Total
	NE	NW	SE	SO	
76023	3	18	1	3	25
76031	1	3	5	15	24
75067	10	5	4	3	22
76033	2	3	2	14	21
76059	2	2	1	14	19
76071	0	11	2	6	19
75115	4	0	9	5	18
76048	3	5	2	8	18
76234	4	10	1	3	18
75028	8	6	3	0	17
75060	6	3	5	3	17
76019	0	3	10	4	17
76086	3	3	2	8	16
75249	6	1	5	3	15
Other	232	195	185	164	776
Total	7360	4776	7172	6059	25367

* Zip Code groups with < 15 and students without Zip Codes are identified as Other.

Table 10. 2008SU Full/Part Time for TCCD

	Frequency	Percent	Valid Percent	Cumulative Percent
Part Time	20110	93.2	93.2	93.2
Full Time	1461	6.8	6.8	100.0
Total	21571	100.0	100.0	

Table 10 is the full/part time student data for the TCCD district as a whole.

Table 11. 2008SU Full/Part Time by Campus

Campus		Full/Part Time		Total
		Part Time	Full Time	
SO	Count	5882	177	6059
	% within Campus	97.1%	2.9%	100.0%
	% within Full/Part Time	24.1%	18.8%	23.9%
NE	Count	7131	229	7360
	% within Campus	96.9%	3.1%	100.0%
	% within Full/Part Time	29.2%	24.3%	29.0%
NW	Count	4626	150	4776
	% within Campus	96.9%	3.1%	100.0%
	% within Full/Part Time	18.9%	15.9%	18.8%
SE	Count	6787	385	7172
	% within Campus	94.6%	5.4%	100.0%
	% within Full/Part Time	27.8%	40.9%	28.3%
Total	Count	24426	941	25367
	% within Campus	96.3%	3.7%	100.0%
	% within Full/Part Time	100.0%	100.0%	100.0%

Table 11 is the full/part time student data for each individual campus. For this table, only enrollments at the individual campus are considered. For example, if a student took 9 hours at SO and 3 hours at NE, the student is listed as part time at SO and part time at NE (and full time in Table 10).

Section III

Course Enrollments by Department by Campus

LIMITATIONS OF STATISTICAL HANDBOOK DATA

Section III contains data on TCCD credit students for Summer 2008 (does not include Continuing Education students). This section is based on data from the Datatel/*Colleague* system. Minor differences are to be expected between Datatel/*Colleague* reports that are run at different times; thus this data may vary slightly from other Datatel/*Colleague* reports.

Minor differences are to be expected between the data in this section and the certified state reports.

Section III excludes 4,016 enrollments in separate lab sections that are included in Section II. Section II contains 43,351 total enrollments for 2008SU. This section contains 39,335 enrollments.

Course Enrollments

Tables 12 and 13 exclude 4,016 enrollments in separate lab sections that are included in Table 2. Table 2 contains 43,351 total enrollments for 2008SU. Tables 12 and 13 contain 39,335 enrollments.

Table 12. 2008SU Enrollments by Department

Department	Campus				Total
	NE	NW	SE	SO	
ACCT	304	160	238	176	878
ACNT	0	0	0	25	25
AERM	0	393	0	0	393
ANTH	0	0	79	0	79
ARCH	0	0	27	0	27
ARCT	0	0	3	0	3
ARTS	360	164	281	224	1029
AUMT	0	0	0	69	69
AVNC	0	11	0	0	11
BCIS	207	113	77	90	487
BIOL	806	408	533	533	2280
BMGT	24	94	50	0	168
BUSI	88	57	153	50	348
CDEC	5	0	0	0	5
CHEM	323	88	307	150	868
CJLE	0	107	0	0	107
CJSA	0	12	0	0	12
CNBT	0	0	1	0	1
COMM	27	0	0	0	27
COSC	251	148	118	125	642
CRIJ	0	51	0	0	51
DAAC	1	0	0	0	1
DANC	22	76	12	16	126
DFTG	0	0	0	30	30
DHYG	25	0	0	0	25
DRAM	77	111	32	86	306
ECON	277	191	713	432	1613
EMSP	225	0	0	0	225
ENGL	1047	1154	1638	1232	5071
ENGR	0	0	14	0	14
ESOL	20	15	0	0	35
FDNS	0	0	23	0	23
FIRS	0	135	0	0	135
FIRT	0	24	0	0	24
FREN	39	0	0	79	118

Department	Campus				Total
	NE	NW	SE	SO	
GEOG	37	117	12	12	178
GEOL	130	55	170	83	438
GERM	7	0	0	0	7
GISC	0	0	3	0	3
GOVT	759	463	1093	1137	3452
HECO	15	0	216	0	231
HIST	803	538	942	1170	3453
HITT	28	0	0	0	28
HPRS	162	0	0	0	162
HRPO	0	0	0	70	70
HUMA	0	31	0	0	31
ITCC	68	0	0	0	68
ITNW	18	0	0	0	18
ITSC	11	11	0	0	22
ITSE	10	0	0	22	32
ITSW	0	5	33	16	54
LTCA	6	0	0	0	6
MATH	1491	733	2127	962	5313
MUAP	71	30	15	0	116
MUSI	375	61	61	83	580
PHED	435	388	547	321	1691
PHIL	136	33	113	78	360
PHTC	3	0	0	0	3
PHYS	187	34	167	110	498
POFI	0	23	25	25	73
POFT	53	3	64	30	150
PSYC	465	406	554	340	1765
PTHA	38	0	0	0	38
RADR	123	0	0	0	123
RDNG	83	54	131	193	461
RNSG	0	0	0	428	428
RSPT	84	0	0	0	84
RTVB	10	0	0	0	10
SLNG	0	116	0	0	116
SOCI	149	207	242	191	789
SPAN	474	131	351	259	1215
SPCH	790	293	399	352	1834
SRGT	56	0	0	0	56
TECA	103	0	0	20	123
Total	11308	7244	11564	9219	39335

Section IV

Course Enrollments by Course Number by Campus

LIMITATIONS OF STATISTICAL HANDBOOK DATA

Section IV contains data on TCCD credit students for Summer 2008 (does not include Continuing Education students). This section is based on data from the Datatel/Colleague system. Minor differences are to be expected between Datatel/Colleague reports that are run at different times; thus this data may vary slightly from other Datatel/Colleague reports.

Minor differences are to be expected between the data in this section and the certified state reports.

Section IV excludes 4,016 enrollments in separate lab sections that are included in Section II. Section II contains 43,351 total enrollments for 2008SU. This section contains 39,335 enrollments.

Course Enrollments

Tables 12 and 13 exclude 4,016 enrollments in separate lab sections that are included in Table 2. Table 2 contains 43,351 total enrollments for 2008SU. Tables 12 and 13 contain 39,335 enrollments.

Table 13. 2008SU Enrollments by Course

Course	Campus				Total
	NE	NW	SE	SO	
ACCT-2301	161	66	128	93	448
ACCT-2302	143	94	110	83	430
ACNT-1303	0	0	0	25	25
AERM-1191	0	16	0	0	16
AERM-1192	0	9	0	0	9
AERM-1241	0	33	0	0	33
AERM-1243	0	13	0	0	13
AERM-1253	0	83	0	0	83
AERM-1254	0	14	0	0	14
AERM-1452	0	72	0	0	72
AERM-2231	0	53	0	0	53
AERM-2233	0	79	0	0	79
AERM-2351	0	21	0	0	21
ANTH-2346	0	0	79	0	79
ARCH-1301	0	0	10	0	10
ARCH-1311	0	0	17	0	17
ARCT-2367	0	0	3	0	3
ARTS-1301	251	132	238	177	798
ARTS-1304	0	0	17	0	17
ARTS-1311	17	7	0	13	37
ARTS-1312	14	0	0	0	14
ARTS-1316	22	8	9	19	58
ARTS-1317	2	0	3	15	20
ARTS-2316	5	0	0	0	5
ARTS-2317	2	0	0	0	2
ARTS-2323	13	0	0	0	13
ARTS-2326	1	0	0	0	1
ARTS-2346	0	8	10	0	18
ARTS-2347	0	9	4	0	13
ARTS-2356	21	0	0	0	21
ARTS-2357	12	0	0	0	12
AUMT-1341	0	0	0	10	10
AUMT-1407	0	0	0	11	11
AUMT-1416	0	0	0	35	35
AUMT-2440	0	0	0	13	13

Course	Campus				Total
	NE	NW	SE	SO	
AVNC-1303	0	11	0	0	11
BCIS-1405	207	113	77	90	487
BIOL-1406	87	21	0	0	108
BIOL-1407	38	22	0	0	60
BIOL-1408	129	60	71	101	361
BIOL-1409	60	46	70	52	228
BIOL-2306	23	0	0	0	23
BIOL-2316	0	22	0	0	22
BIOL-2401	221	115	159	162	657
BIOL-2402	136	99	122	125	482
BIOL-2420	112	23	111	93	339
BMGT-1268	0	16	0	0	16
BMGT-1270	0	16	0	0	16
BMGT-1303	24	0	50	0	74
BMGT-2172	0	15	0	0	15
BMGT-2188	0	16	0	0	16
BMGT-2473	0	15	0	0	15
BMGT-2574	0	16	0	0	16
BUSI-1301	13	11	116	50	190
BUSI-1307	75	0	0	0	75
BUSI-2301	0	24	37	0	61
BUSI-2302	0	22	0	0	22
CDEC-2324	5	0	0	0	5
CHEM-1405	0	0	0	24	24
CHEM-1406	81	43	90	86	300
CHEM-1411	88	22	102	24	236
CHEM-1412	68	23	115	16	222
CHEM-2423	43	0	0	0	43
CHEM-2425	43	0	0	0	43
CJLE-1111	0	15	0	0	15
CJLE-1506	0	15	0	0	15
CJLE-1512	0	31	0	0	31
CJLE-1518	0	31	0	0	31
CJLE-2247	0	15	0	0	15
CJSA-2334	0	10	0	0	10
CJSA-2388	0	2	0	0	2
CNBT-2266	0	0	1	0	1
COMM-1335	20	0	0	0	20
COMM-2366	7	0	0	0	7
COSC-1401	227	128	118	109	582
COSC-1420	0	20	0	0	20
COSC-1436	24	0	0	16	40
CRIJ-1301	0	22	0	0	22
CRIJ-1310	0	18	0	0	18

Course	Campus				Total
	NE	NW	SE	SO	
CRIJ-2328	0	11	0	0	11
DAAC-2167	1	0	0	0	1
DANC-1141	0	1	0	0	1
DANC-1147	0	7	0	0	7
DANC-1148	0	2	0	0	2
DANC-1341	5	4	0	0	9
DANC-1342	4	1	0	0	5
DANC-1345	10	10	0	16	36
DANC-1346	3	1	0	0	4
DANC-1347	0	0	12	0	12
DANC-1348	0	1	0	0	1
DANC-2141	0	1	0	0	1
DANC-2303	0	48	0	0	48
DFTG-1405	0	0	0	15	15
DFTG-1409	0	0	0	15	15
DHYG-2331	25	0	0	0	25
DRAM-1310	72	83	32	17	204
DRAM-2366	5	28	0	69	102
ECON-2301	200	114	579	228	1121
ECON-2302	77	77	134	204	492
EMSP-1160	61	0	0	0	61
EMSP-1501	61	0	0	0	61
EMSP-2162	25	0	0	0	25
EMSP-2243	14	0	0	0	14
EMSP-2267	14	0	0	0	14
EMSP-2338	25	0	0	0	25
EMSP-2430	25	0	0	0	25
ENGL-0324	10	21	21	35	87
ENGL-0325	13	2	23	32	70
ENGL-1301	381	552	707	370	2010
ENGL-1302	355	449	620	370	1794
ENGL-2311	57	43	0	0	100
ENGL-2322	0	6	27	44	77
ENGL-2323	0	0	35	17	52
ENGL-2327	62	0	53	129	244
ENGL-2328	35	30	31	166	262
ENGL-2332	90	19	30	23	162
ENGL-2333	44	32	91	46	213
ENGR-1304	0	0	14	0	14
ESOL-0311	2	0	0	0	2
ESOL-0312	3	1	0	0	4
ESOL-0313	7	2	0	0	9
ESOL-0314	5	1	0	0	6
ESOL-0315	0	5	0	0	5

Course	Campus				Total
	NE	NW	SE	SO	
ESOL-0316	3	4	0	0	7
ESOL-0321	0	2	0	0	2
FDNS-1341	0	0	23	0	23
FIRS-1301	0	24	0	0	24
FIRS-1313	0	24	0	0	24
FIRS-1319	0	29	0	0	29
FIRS-1323	0	29	0	0	29
FIRS-1329	0	29	0	0	29
FIRT-1338	0	24	0	0	24
FREN-1411	19	0	0	24	43
FREN-1412	20	0	0	21	41
FREN-2311	0	0	0	17	17
FREN-2312	0	0	0	17	17
GEOG-1301	0	25	0	12	37
GEOG-1302	0	23	0	0	23
GEOG-1303	37	69	12	0	118
GEOL-1305	11	0	0	0	11
GEOL-1401	0	21	0	0	21
GEOL-1403	78	28	96	52	254
GEOL-1404	30	6	57	31	124
GEOL-1445	0	0	17	0	17
GEOL-2407	11	0	0	0	11
GERM-1412	7	0	0	0	7
GISC-2264	0	0	3	0	3
GOVT-2305	354	197	700	644	1895
GOVT-2306	405	266	393	493	1557
HECO-1322	15	0	216	0	231
HIST-1301	436	234	474	634	1778
HIST-1302	367	233	444	518	1562
HIST-2301	0	0	24	18	42
HIST-2321	0	25	0	0	25
HIST-2322	0	46	0	0	46
HITT-2335	14	0	0	0	14
HITT-2346	14	0	0	0	14
HPRS-1206	138	0	0	0	138
HPRS-2201	24	0	0	0	24
HRPO-1311	0	0	0	25	25
HRPO-2301	0	0	0	45	45
HUMA-1301	0	31	0	0	31
ITCC-1402	22	0	0	0	22
ITCC-1406	13	0	0	0	13
ITCC-1442	18	0	0	0	18
ITCC-1446	15	0	0	0	15
ITNW-1408	18	0	0	0	18

Course	Campus				Total
	NE	NW	SE	SO	
ITSC-1405	11	11	0	0	22
ITSE-1411	0	0	0	22	22
ITSE-2417	10	0	0	0	10
ITSW-1407	0	5	33	8	46
ITSW-1410	0	0	0	8	8
LTC A-2660	4	0	0	0	4
LTC A-2661	2	0	0	0	2
MATH-0302	116	105	191	69	481
MATH-0304	153	137	267	182	739
MATH-0350	329	183	463	217	1192
MATH-1314	279	132	315	178	904
MATH-1316	54	19	114	38	225
MATH-1324	77	17	59	48	201
MATH-1325	113	18	116	55	302
MATH-1332	19	0	25	20	64
MATH-1342	144	62	215	46	467
MATH-1350	18	17	56	0	91
MATH-1351	20	27	30	0	77
MATH-2315	30	0	32	0	62
MATH-2412	29	16	56	51	152
MATH-2414	57	0	92	0	149
MATH-2513	53	0	96	58	207
MUAP-1190	69	30	15	0	114
MUAP-1290	2	0	0	0	2
MUSI-1157	18	0	0	0	18
MUSI-1181	7	0	0	0	7
MUSI-1301	10	0	14	0	24
MUSI-1306	340	61	47	83	531
PHED-1102	14	0	15	0	29
PHED-1106	11	0	0	0	11
PHED-1107	7	0	0	0	7
PHED-1111	0	6	0	0	6
PHED-1113	10	29	0	0	39
PHED-1122	5	0	0	13	18
PHED-1125	5	0	0	0	5
PHED-1129	0	6	0	0	6
PHED-1131	0	0	0	9	9
PHED-1132	0	4	0	0	4
PHED-1133	30	8	17	21	76
PHED-1134	16	15	28	9	68
PHED-1140	0	2	0	0	2
PHED-1142	1	0	0	0	1
PHED-1143	1	2	0	0	3
PHED-1148	29	0	23	18	70

Course	Campus				Total
	NE	NW	SE	SO	
PHED-1164	268	280	444	227	1219
PHED-1338	10	20	0	0	30
PHED-2102	1	2	4	0	7
PHED-2107	4	0	0	0	4
PHED-2111	0	1	0	0	1
PHED-2113	2	4	0	0	6
PHED-2122	2	0	0	7	9
PHED-2125	2	0	0	0	2
PHED-2129	0	2	0	0	2
PHED-2131	0	0	0	2	2
PHED-2132	0	1	0	0	1
PHED-2133	8	3	7	9	27
PHED-2134	4	3	2	1	10
PHED-2148	5	0	7	5	17
PHIL-1301	99	0	68	48	215
PHIL-1304	0	33	45	30	108
PHIL-2306	37	0	0	0	37
PHTC-1343	3	0	0	0	3
PHYS-1401	104	0	59	60	223
PHYS-1402	57	0	50	50	157
PHYS-1411	8	18	0	0	26
PHYS-1415	0	16	0	0	16
PHYS-2425	18	0	29	0	47
PHYS-2426	0	0	29	0	29
POFI-1449	0	22	0	14	36
POFI-2401	0	1	25	6	32
POFI-2431	0	0	0	5	5
POFT-1127	19	0	0	3	22
POFT-1309	0	0	24	0	24
POFT-1321	0	0	40	24	64
POFT-1329	0	0	0	3	3
POFT-2301	0	3	0	0	3
POFT-2312	34	0	0	0	34
PSYC-1110	0	0	35	0	35
PSYC-1301	38	14	0	0	52
PSYC-2301	312	232	201	271	1016
PSYC-2308	0	95	38	0	133
PSYC-2314	115	65	280	69	529
PTHA-1225	12	0	0	0	12
PTHA-1260	12	0	0	0	12
PTHA-2201	12	0	0	0	12
PTHA-2462	2	0	0	0	2
RADR-1201	31	0	0	0	31
RADR-1203	32	0	0	0	32

Course	Campus				Total
	NE	NW	SE	SO	
RADR-1311	31	0	0	0	31
RADR-1466	28	0	0	0	28
RADR-2366	1	0	0	0	1
RDNG-0160	0	0	0	7	7
RDNG-0361	69	33	97	139	338
RDNG-0363	14	21	34	47	116
RNSG-2213	0	0	0	214	214
RNSG-2263	0	0	0	214	214
RSPT-1267	28	0	0	0	28
RSPT-2139	28	0	0	0	28
RSPT-2414	28	0	0	0	28
RTVB-1409	8	0	0	0	8
RTVB-2487	2	0	0	0	2
SLNG-1404	0	44	0	0	44
SLNG-1405	0	30	0	0	30
SLNG-1444	0	7	0	0	7
SLNG-1445	0	9	0	0	9
SLNG-2401	0	21	0	0	21
SLNG-2431	0	5	0	0	5
SOCI-1301	149	206	196	191	742
SOCI-2301	0	1	46	0	47
SPAN-1411	138	40	119	127	424
SPAN-1412	130	41	96	59	326
SPAN-2106	15	0	0	0	15
SPAN-2311	98	25	93	38	254
SPAN-2312	93	25	43	35	196
SPCH-1311	486	222	327	191	1226
SPCH-1315	203	0	0	0	203
SPCH-1318	24	49	0	71	144
SPCH-1321	77	22	72	90	261
SRGT-2130	28	0	0	0	28
SRGT-2266	28	0	0	0	28
TECA-1303	30	0	0	0	30
TECA-1354	73	0	0	20	93
Total	11308	7244	11564	9219	39335