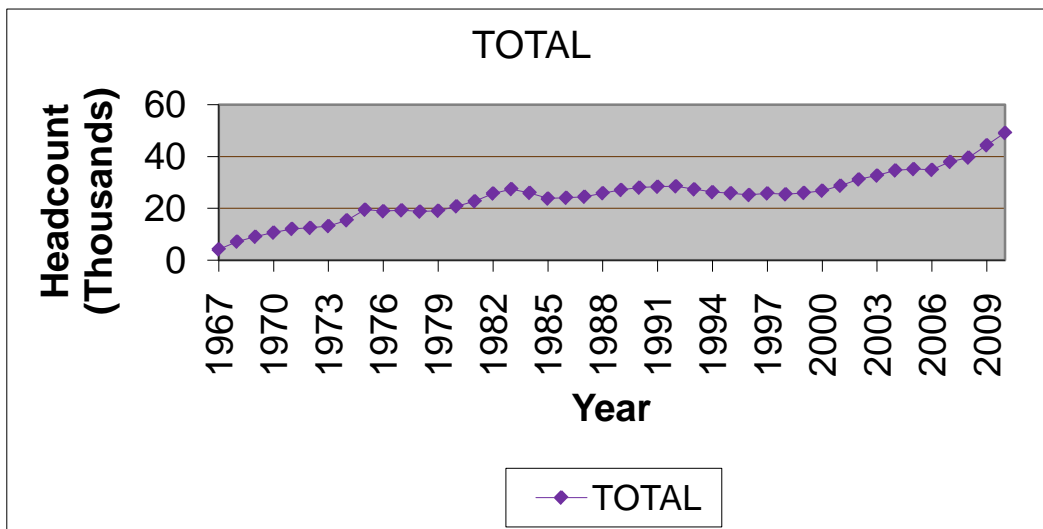


STATISTICAL HANDBOOK

2010FL

HEADCOUNT ENROLLMENTS FALL SEMESTERS -- 1967 – PRESENT



Office of Institutional Research

Tarrant County College

Table of Contents

TCCD 2010 Fall Semester Statistical Handbook

	Page
Introduction	1
Section I: Historical Data	2
Table 1. Headcount and Full-Time Equivalent	3
Figure 1. Headcount Enrollments by Campus, Fall Semesters	4
Section II: Demographic Data	5
Table 2. 2010 Fall Headcount, Enrollments, Contact Hours, and Semester Hours	6
Table 3. 2010 Fall – Race & Ethnicity by Gender – District	7
Table 4. 2010 Fall – Race & Ethnicity by Gender – South	8
Table 5. 2010 Fall – Race & Ethnicity by Gender – Northeast	9
Table 6. 2010 Fall – Race & Ethnicity by Gender – Northwest	10
Table 7. 2010 Fall – Race & Ethnicity by Gender – Southeast	11
Table 8. 2010 Fall – Race & Ethnicity by Gender – Trinity River	12
Table 9a. Average Age by Campus – Separated by Age Group	13
Table 9b. Average Age by Campus – Mean	13
Table 9c. Students by Zip Code	14
Table 10. Full/Part Time for District	17
Table 11. Full/Part Time by Campus	17
Section III: Course Enrollments by Department by Campus	18
Table 12. Enrollments by Department	19
Section IV: Course Enrollments by Course Number by Campus	22
Table 13. Enrollments by Course	23
Section V: IPEDS Race & Ethnicity Data	40
Table 14. 2010 Fall – Race/Ethnicity by Gender – District	41
Table 15. 2010 Fall – Race/Ethnicity by Gender – South	42
Table 16. 2010 Fall – Race/Ethnicity by Gender – Northeast	43
Table 17. 2010 Fall – Race/Ethnicity by Gender – Northwest	44
Table 18. 2010 Fall – Race/Ethnicity by Gender – Southeast	45
Table 19. 2010 Fall – Race/Ethnicity by Gender – Trinity River	46
Section VI: Other Student & Enrollment Data	47
Table 20. Developmental Education Courses by Campus	48
Table 21. Dual Credit Enrollments by Campus	49
Table 22. Distance Learning Enrollments by Campus	50
Table 23. Weekend College Enrollments by Campus	51
Table 24. Ratio Comparison of 2010FL data to 2009FL data	52

INTRODUCTION

This statistical handbook contains data on TCCD credit students for Fall 2010. It does not include Continuing Education students.

Table 2 contains information related to the source of the data in this report and how the data in this report relates to data in other reports such as the certified state reports. Minor differences are to be expected between Datatel/*Colleague* reports that are run at different times; this data may vary slightly from other Datatel/*Colleague* reports. Audit enrollments are included in this report.

If there are questions about this statistical handbook, please contact the TCCD Office of Institutional Research.

Section I

HISTORICAL DATA

LIMITATIONS OF STATISTICAL HANDBOOK DATA

Section I contains data on TCCD credit students for Fall 2010 (does not include Continuing Education students).

This section is based on data collected from the Datatel/*Colleague* system for all semesters beginning in the year 2004. All data identified which is prior to 2004 was collected utilizing the Legacy system. Minor differences are to be expected between Datatel/*Colleague* reports that are run at different times; thus this data may vary slightly from other Datatel/*Colleague* reports.

Minor differences are to be expected between the data in this section and the certified state reports.

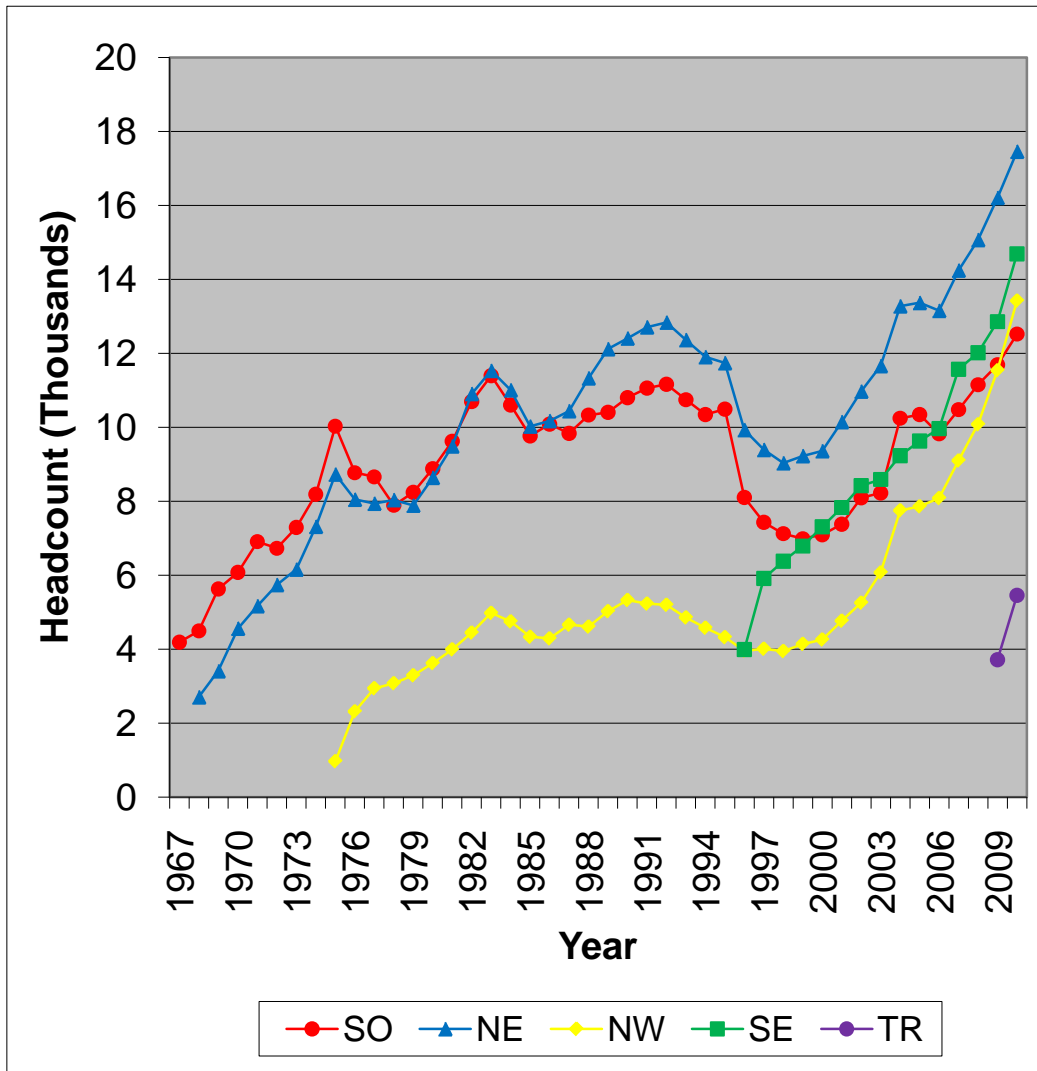
**TABLE 1--FALL SEMESTERS
HEADCOUNT AND FULL-TIME EQUIVALENT**

YEAR	District Total	Campus Totals		South			Northeast			Northwest			Southeast			Trinity River		
		HC	FTE	HC	FTE	% of Total	HC	FTE	% of Total	HC	FTE	% of Total	HC	FTE	% of Total	HC	FTE	% of Total
1976-77	18899	19148	11459	8776	5357	46.75	8053	4741	41.37	2319	1361	11.88						
1977-78	19257	19554	11323	8663	5086	44.92	7945	4540	40.10	2946	1697	14.99						
1978-79	18745	19018	10302	7895	4314	41.88	8042	4304	41.78	3081	1684	16.35						
1979-80	19085	19432	10375	8243	4458	42.97	7893	4158	40.08	3296	1759	16.95						
1980-81	20798	21152	11124	8883	4709	42.33	8644	4504	40.49	3625	1911	17.18						
1981-82	22731	23117	12035	9627	5036	41.84	9493	4936	41.01	3997	2063	17.14						
1982-83	25746	26163	13704	10703	5615	40.97	10910	5699	41.59	4550	2390	17.44						
1983-84	27452	27919	14398	11401	5930	41.19	11535	5905	41.01	4983	2563	17.80						
1984-85	25990	26369	13257	10606	5386	40.63	11010	5490	41.41	4753	2381	17.96						
1985-86	23783	24135	12408	9768	5011	40.39	10030	5193	41.85	4337	2204	17.76						
1986-87	24092	24562	12726	10090	5110	40.15	10178	5422	42.61	4294	2194	17.24						
1987-88	24490	24949	12989	9839	5004	38.52	10445	5588	43.02	4665	2397	18.45						
1988-89	25857	26280	13746	10334	5247	38.17	11333	6077	44.21	4613	2422	17.62						
1989-90	27109	27559	14339	10409	5337	37.22	12120	6409	44.70	5030	2593	18.08						
1990-91	27999	28546	15082	10804	5643	37.42	12410	6669	44.22	5332	2770	18.37						
1991-92	28349	29009	15332	11064	5702	37.19	12711	6888	44.93	5234	2742	17.88						
1992-93	28515	29211	15624	11168	5857	37.49	12840	7020	44.93	5203	2747	17.58						
1993-94	27352	27977	15075	10749	5680	37.68	12367	6802	45.12	4861	2593	17.20						
1994-95	26253	26838	14387	10349	5474	38.05	11906	6456	44.87	4583	2457	17.08						
1995-96	25850	26565	14186	10496	5559	39.19	11742	6290	44.34	4327	2337	16.47						
1996-97	25174	25998	13857	8106	4333	31.27	9935	5323	38.41	3964	2128	15.36	3993	2073	14.96			
1997-98	25779	26762	14380	7436	3946	27.44	9397	5040	35.05	4013	2168	15.08	5916	3226	22.43			
1998-99	25432	26501	14828	7128	3943	26.59	9038	5066	34.17	3951	2158	14.55	6384	3661	24.69			
1999-00	25980	27159	15168	6991	3859	25.44	9230	5140	33.89	4145	2288	15.08	6793	3881	25.59			
2000-01	26836	28038	15740	7097	3933	24.99	9364	5249	33.35	4263	2366	15.03	7314	4192	26.63			
2001-02	28751	30139	17066	7383	4195	24.58	10149	5737	33.62	4772	2620	15.35	7835	4514	26.45			
2002-03	31169	32755	18479	8096	4615	24.97	10975	6138	33.22	5259	2912	15.76	8425	4814	26.05			
2003-04	32657	34562	19388	8229	4588	23.66	11663	6505	33.55	6077	3354	17.30	8593	4941	25.48			
2004-05	34642	40519	20402	10248	5096	24.98	13279	6712	32.90	7757	3674	18.01	9235	4920	24.12			
2005-06	35163	41219	20509	10348	5057	24.66	13370	6693	32.63	7866	3717	18.12	9635	5042	24.58			
2006-07	34854	41045	20206	9826	4737	23.44	13157	6542	32.38	8091	3776	18.69	9971	5151	25.49			
2007-08	37948	45408	21658	10481	4922	22.73	14246	7013	32.38	9107	4096	18.91	11574	5627	25.98			
2008-09	39596	48335	22649	11155	5071	22.39	15071	7338	32.40	10086	4493	19.84	12023	5746	25.37			
2009-10	44355	56030	25536	11695	5269	20.63	16209	7762	30.40	11548	5051	19.78	12861	6080	23.81	3717	1374	5.381
2010-11	49108	63565	28417	12524	5497	19.34	17458	8199	28.85	13431	5797	20.40	14692	6719	23.64	5460	2205	7.759

Note: District total represents unduplicated headcount

Figure 1. Headcount Enrollments by Campus, Fall Semesters

Fall 1967 to Fall 2010



Section II

DEMOGRAPHIC DATA

Tables 3 through 8 in Section II contain the raw data for the new categories of race and ethnicity. These changes in race and ethnicity are due to Federal reporting requirements. Section V contains ethnicity data of a format similar to previous Statistical Handbooks.

LIMITATIONS OF STATISTICAL HANDBOOK DATA

Section II contains data on TCCD credit students for Fall 2010 (does not include Continuing Education students). This section is based on data from the Datatel/*Colleague* system. Minor differences are to be expected between Datatel/*Colleague* reports that are run at different times; thus this data may vary slightly from other Datatel/*Colleague* reports.

Minor differences are to be expected between the data in this section and the certified state reports.

Table 2. 2010FL Headcount, Enrollments, Contact Hours, and Semester Hours

UG CONTACT HOURS AND HEADCOUNT

TERM: 2010FL

CAMPUS	HEADCOUNT	CREDIT STUDENTS		SEMESTER HOURS	FTE
		NUMBER OF ENROLLMENTS	CONTACT HOURS		
Northeast	17,458	44,953	2,344,568	122,979	8,199
Northwest	13,431	31,293	1,598,382	86,959	5,797
Southeast	14,692	36,419	1,828,244	100,782	6,719
South	12,524	29,473	1,605,778	82,456	5,497
Trinity River	5,460	13,547	588,048	33,077	2,205
TOTAL (Dupl)	63,565	155,685	7,965,020	426,253	28,417
TOTAL (Undupl)	49,108				

Notes: This report was run on the Datatel/*Colleague* system using the semester as defined by the *Colleague* field Term.

This report includes all enrollments for the *Colleague* Term (semester) as of the run time. This data will differ from some other reports that only include enrollments in classes with an ODOR (Official Day of Record) on or before the official semester ODOR (i.e. some reports exclude some "miniterm" enrollments).

This report may differ from other *Colleague* reports with different run time/dates. The data in this Table 2 is based on an XUHS run made 9/16/2010 at 5:33:35.

This report will differ from the certified state reports. State reports use a different definition for semester.

Table 3. 2010FL Race & Ethnicity by Gender TCCD District

This page contains the raw data for the new categories of race and ethnicity. The changes in race and ethnicity are due to Federal reporting requirements. Section V contains ethnicity data of a format similar to previous Statistical Handbooks.

Female

Races	Ethnics				Total
		Ethnicity Unknown	Hispanic/Latino	Non Hispanic/Latino	
	1	0	5391	1	5393
American/Alaska Native	0	0	13	141	154
Asian	3	3	9	1618	1633
Black or African American	5	11	25	5561	5602
Hawaiian/Pacific Islander	0	1	2	29	32
International	11	225	25	31	292
Multi	0	2	10	55	67
Race Unknown	0	186	585	19	790
White	9	28	309	14401	14747
Total	29	456	6369	21856	28710

Male

Races	Ethnics				Total
		Ethnicity Unknown	Hispanic/Latino	Non Hispanic/Latino	
	1	0	3781	4	3786
American/Alaska Native	0	0	2	106	108
Asian	0	1	4	1345	1350
Black or African American	7	8	17	2862	2894
Hawaiian/Pacific Islander	0	1	2	17	20
International	4	157	24	15	200
Multi	0	2	5	48	55
Race Unknown	0	134	423	13	570
White	13	44	227	11131	11415
Total	25	347	4485	15541	20398

Table 4. 2010FL Race & Ethnicity by Gender SO Campus

This page contains the raw data for the new categories of race and ethnicity. The changes in race and ethnicity are due to Federal reporting requirements. Section V contains ethnicity data of a format similar to previous Statistical Handbooks.

Female

Races	Ethnics				Total
		Ethnicity Unknown	Hispanic/Latino	Non Hispanic/Latino	
	1	0	1453	0	1454
American/Alaska Native	0	0	1	32	33
Asian	0	0	1	314	315
Black or African American	2	3	9	2096	2110
Hawaiian/Pacific Islander	0	0	1	5	6
International	5	45	6	9	65
Multi	0	0	2	17	19
Race Unknown	0	48	71	6	125
White	1	5	42	3446	3494
Total	9	101	1586	5925	7621

Male

Races	Ethnics				Total
		Ethnicity Unknown	Hispanic/Latino	Non Hispanic/Latino	
	0	0	998	1	999
American/Alaska Native	0	0	0	22	22
Asian	0	0	1	248	249
Black or African American	5	1	5	932	943
Hawaiian/Pacific Islander	0	0	1	2	3
International	0	39	7	3	49
Multi	0	0	1	8	9
Race Unknown	0	34	43	2	79
White	4	4	35	2507	2550
Total	9	78	1091	3725	4903

Table 5. 2010FL Race & Ethnicity by Gender NE Campus

This page contains the raw data for the new categories of race and ethnicity. The changes in race and ethnicity are due to Federal reporting requirements. Section V contains ethnicity data of a format similar to previous Statistical Handbooks.

Female

Races	Ethnics				Total
		Ethnicity Unknown	Hispanic/Latino	Non Hispanic/Latino	
	1	0	1342	0	1343
American/Alaska Native	0	0	3	55	58
Asian	1	2	0	607	610
Black or African American	1	8	12	1730	1751
Hawaiian/Pacific Islander	0	1	1	15	17
International	3	80	2	8	93
Multi	0	0	4	16	20
Race Unknown	0	67	202	5	274
White	5	19	98	6156	6278
Total	11	177	1664	8592	10444

Male

Races	Ethnics				Total
		Ethnicity Unknown	Hispanic/Latino	Non Hispanic/Latino	
	0	0	829	0	829
American/Alaska Native	0	0	0	32	32
Asian	0	1	1	467	469
Black or African American	1	5	2	775	783
Hawaiian/Pacific Islander	0	1	1	11	13
International	1	45	8	4	58
Multi	0	1	0	15	16
Race Unknown	0	48	138	8	194
White	7	27	63	4523	4620
Total	9	128	1042	5835	7014

Table 6. 2010FL Race & Ethnicity by Gender NW Campus

This page contains the raw data for the new categories of race and ethnicity. The changes in race and ethnicity are due to Federal reporting requirements. Section V contains ethnicity data of a format similar to previous Statistical Handbooks.

Female

	Ethnics				Total
Races		Ethnicity Unknown	Hispanic/Latino	Non Hispanic/Latino	
	0	0	1605	0	1605
American/Alaska Native	0	0	6	45	51
Asian	0	1	2	329	332
Black or African American	0	2	8	1129	1139
Hawaiian/Pacific Islander	0	0	0	5	5
International	1	42	4	1	48
Multi	0	0	1	15	16
Race Unknown	0	61	126	6	193
White	2	4	112	4498	4616
Total	3	110	1864	6028	8005

Male

	Ethnics				Total
Races		Ethnicity Unknown	Hispanic/Latino	Non Hispanic/Latino	
	0	0	1135	0	1135
American/Alaska Native	0	0	1	33	34
Asian	0	0	1	265	266
Black or African American	2	2	4	487	495
Hawaiian/Pacific Islander	0	0	0	2	2
International	0	32	4	3	39
Multi	0	0	2	13	15
Race Unknown	0	31	98	2	131
White	1	13	87	3208	3309
Total	3	78	1332	4013	5426

Table 7. 2010FL Race & Ethnicity by Gender SE Campus

This page contains the raw data for the new categories of race and ethnicity. The changes in race and ethnicity are due to Federal reporting requirements. Section V contains ethnicity data of a format similar to previous Statistical Handbooks.

Female

Races	Ethnics				Total
		Ethnicity Unknown	Hispanic/Latino	Non Hispanic/Latino	
	0	0	1584	1	1585
American/Alaska Native	0	0	5	41	46
Asian	1	0	5	705	711
Black or African American	3	2	8	2214	2227
Hawaiian/Pacific Islander	0	0	1	5	6
International	3	111	10	13	137
Multi	0	1	2	18	21
Race Unknown	0	59	115	7	181
White	0	2	76	3729	3807
Total	7	175	1806	6733	8721

Male

Races	Ethnics				Total
		Ethnicity Unknown	Hispanic/Latino	Non Hispanic/Latino	
	1	0	1017	3	1021
American/Alaska Native	0	0	0	29	29
Asian	0	1	1	610	612
Black or African American	1	1	7	1194	1203
Hawaiian/Pacific Islander	0	1	0	3	4
International	3	74	4	7	88
Multi	0	0	1	14	15
Race Unknown	0	46	76	2	124
White	1	6	54	2814	2875
Total	6	129	1160	4676	5971

Table 8. 2010FL Race & Ethnicity by Gender TR Campus

This page contains the raw data for the new categories of race and ethnicity. The changes in race and ethnicity are due to Federal reporting requirements. Section V contains ethnicity data of a format similar to previous Statistical Handbooks.

Female

Races	Ethnics				Total
		Ethnicity Unknown	Hispanic/Latino	Non Hispanic/Latino	
	0	0	863	0	863
American/Alaska Native	0	0	1	17	18
Asian	1	0	3	110	114
Black or African American	0	0	3	630	633
Hawaiian/Pacific Islander	0	0	0	2	2
International	1	21	4	4	30
Multi	0	1	1	9	11
Race Unknown	0	17	189	2	208
White	2	3	50	1487	1542
Total	4	42	1114	2261	3421

Male

Races	Ethnics				Total
		Ethnicity Unknown	Hispanic/Latino	Non Hispanic/Latino	
	0	0	541	0	541
American/Alaska Native	0	0	1	11	12
Asian	0	0	1	68	69
Black or African American	2	0	2	264	268
Hawaiian/Pacific Islander	0	1	0	1	2
International	0	13	2	0	15
Multi	0	1	1	3	5
Race Unknown	0	19	120	1	140
White	0	7	17	963	987
Total	2	41	685	1311	2039

Table 9a. 2010FL Age by Campus

		Campus					Total
		NE	NW	SE	SO	TR	
Under 21	Count	6023	4803	6356	3758	2119	23059
	% within Campus	34.5%	35.8%	43.3%	30.0%	38.8%	36.3%
21-25	Count	4798	3715	3841	3454	1447	17255
	% within Campus	27.5%	27.7%	26.1%	27.6%	26.5%	27.1%
26-30	Count	2520	1888	1701	1946	787	8842
	% within Campus	14.4%	14.1%	11.6%	15.5%	14.4%	13.9%
31-35	Count	1398	1149	1017	1200	377	5141
	% within Campus	8.0%	8.6%	6.9%	9.6%	6.9%	8.1%
36-40	Count	1027	818	702	797	294	3638
	% within Campus	5.9%	6.1%	4.8%	6.4%	5.4%	5.7%
Over 40	Count	1692	1058	1075	1369	436	5630
	% within Campus	9.7%	7.9%	7.3%	10.9%	8.0%	8.9%
Total	Count	17458	13431	14692	12524	5460	63565
	% within Campus	100.0%	100.0%	100.0%	100.0%	100.0%	100.0%

Table 9b. 2010FL Average Age by Campus

NE	NW	SE	SO	TR	TCCD
26.74	26.21	25.14	27.57	25.90	26.03*

* The TCCD average age of 26.03 is based on the average age of the unduplicated enrollment count of 49,108.

Table 9c. 2010FL Students by ZIP Code

Zip Code	Campus				TR	Total
	NE	NW	SE	SO		
76063	255	200	1676	375	106	2612
76137	918	939	132	197	136	2322
76017	234	141	1088	470	88	2021
75052	236	163	1327	222	52	2000
76179	288	1248	88	147	118	1889
76248	964	557	103	130	79	1833
76180	1228	274	97	159	74	1832
76133	177	212	101	827	220	1537
76001	169	138	903	232	50	1492
76002	161	101	992	174	49	1477
76018	186	107	939	156	52	1440
76014	177	100	854	174	39	1344
76016	196	109	603	361	65	1334
76131	262	746	48	98	66	1220
76108	143	702	74	153	124	1196
76123	142	143	95	640	165	1185
76021	816	138	82	112	25	1173
76010	152	89	739	155	37	1172
76116	154	386	80	269	281	1170
76028	144	132	165	612	101	1154
76244	419	425	59	91	57	1051
76039	689	117	90	94	42	1032
76051	743	101	66	69	34	1013
76013	187	98	502	183	42	1012
76112	326	99	103	315	153	996
76106	94	625	27	52	161	959
76148	545	208	49	85	42	929
76053	611	83	46	79	41	860
76119	113	74	74	496	91	848
76006	272	97	317	108	46	840
76134	91	106	67	455	87	806
76110	81	86	44	346	233	790
76117	394	191	34	63	107	789
76036	107	85	78	447	70	787
76132	88	125	75	375	123	786
76114	87	327	34	89	218	755
76040	492	71	84	71	32	750
76140	101	74	90	411	55	731
76135	96	436	31	63	46	672
76015	98	56	348	127	29	658
76107	82	157	44	132	241	656

Zip Code	Campus					Total
	NE	NW	SE	SO	TR	
76012	182	61	247	94	33	617
76011	148	60	251	71	36	566
76034	427	51	25	38	19	560
76020	66	371	22	51	31	541
76092	401	38	17	32	9	497
76126	60	177	27	159	73	496
76262	255	137	36	37	23	488
76120	198	53	64	109	54	478
76118	312	60	39	41	24	476
76182	332	72	21	36	13	474
76052	119	261	30	45	16	471
76111	103	111	17	43	183	457
76022	316	54	29	37	19	455
76109	63	85	31	148	120	447
76105	49	31	27	207	79	393
76115	33	45	27	210	70	385
76054	277	35	18	32	11	373
76104	48	38	26	152	106	370
76103	98	42	23	99	105	367
75050	94	43	146	33	14	330
76164	27	151	6	17	125	326
76060	24	16	69	133	13	255
76177	60	105	19	24	17	225
75054	20	23	128	30	6	207
76102	32	28	11	55	77	203
76009	29	21	61	76	15	202
76247	46	103	10	14	6	179
75051	27	8	97	20	3	155
76008	18	59	13	22	27	139
76058	22	16	12	75	14	139
76155	68	17	20	13	8	126
75104	9	6	75	18	4	112
76078	23	61	6	13	5	108
76082	13	63	5	19	8	108
76065	14	10	47	25	3	99
76087	13	44	9	14	16	96
76049	16	19	9	22	7	73
76048	12	21	6	23	10	72
76085	7	38	5	5	6	61
76033	10	7	5	27	8	57
76084	3	5	37	9	2	56
76031	10	7	3	25	7	52
75067	28	10	8	3	2	51
75062	30	5	5	4	3	47

Zip Code	Campus					Total
	NE	NW	SE	SO	TR	
75249	4	4	29	5	0	42
76234	13	17	3	6	3	42
76127	4	33	1	1	2	41
76071	5	27	2	4	2	40
75061	19	7	6	1	3	36
75115	8	4	17	6	1	36
75038	11	9	6	8	1	35
75028	16	10	3	3	1	33
76023	9	16	3	2	2	32
76086	8	10	3	5	6	32
76059	2	2	4	17	5	30
75060	11	6	4	4	4	29
75137	6	3	13	3	4	29
75063	10	6	2	4	1	23
75154	5	2	14	2	0	23
76210	6	8	4	2	1	21
75022	11	4	1	3	0	19
75116	3	4	10	2	0	19
75165	2	3	6	7	1	19
75217	4	8	4	1	2	19
75287	9	5	2	3	0	19
76088	2	6	2	2	7	19
76096	2	2	9	6	0	19
76162	3	4	1	8	3	19
76208	6	4	3	4	2	19
76226	9	5	4	1	0	19
76095	13	3	0	1	1	18
75211	3	4	7	3	0	17
76044	4	4	2	6	1	17
76050	3	1	4	8	1	17
76073	6	5	4	2	0	17
76136	1	10	1	3	2	17
76003	3	1	5	5	2	16
76209	6	4	4	2	0	16
75019	8	3	4	0	0	15
75236	7	3	5	0	0	15
76161	3	6	1	4	1	15
Other	296	207	220	167	80	970
Total	17401	13394	14650	12485	5446	63376

** ZIP Code groups with < 15 and students without Zip Codes are identified as Other.

Table 10. 2010FL Full/Part Time for TCCD

	Frequency	Percent	Valid Percent	Cumulative Percent
Part Time	31517	64.2	64.2	64.2
Full Time	17591	35.8	35.8	100.0
Total	49108	100.0	100.0	

Table 10 is the full/part time student data for the TCCD district as a whole.

Table 11. 2010FL Full/Part Time by Campus

Campus		Full/Part Time		Total
		Part Time	Full Time	
NE	Count	13728	3730	17458
	% within Campus	78.6%	21.4%	100.0%
	% within Full/Part Time	26.7%	30.6%	27.5%
NW	Count	11022	2409	13431
	% within Campus	82.1%	17.9%	100.0%
	% within Full/Part Time	21.5%	19.7%	21.1%
SE	Count	11575	3117	14692
	% within Campus	78.8%	21.2%	100.0%
	% within Full/Part Time	22.5%	25.5%	23.1%
SO	Count	10417	2107	12524
	% within Campus	83.2%	16.8%	100.0%
	% within Full/Part Time	20.3%	17.3%	19.7%
TR	Count	4621	839	5460
	% within Campus	84.6%	15.4%	100.0%
	% within Full/Part Time	9.0%	6.9%	8.6%
Total	Count	51363	12202	63565
	% within Campus	80.8%	19.2%	100.0%
	% within Full/Part Time	100.0%	100.0%	100.0%

Table 11 is the full/part time student data for each individual campus. For this table, only enrollments at the individual campus are considered. For example, if a student took 9 hours at SO and 3 hours at NE, the student is listed as part time at SO and part time at NE (and full time in Table 10).

Section III

Course Enrollments by Department by Campus

LIMITATIONS OF STATISTICAL HANDBOOK DATA

Section III contains data on TCCD credit students for Fall 2010 (does not include Continuing Education students). This section is based on data from the Datatel/Colleague system. Minor differences are to be expected between Datatel/Colleague reports that are run at different times; thus this data may vary slightly from other Datatel/Colleague reports.

Minor differences are to be expected between the data in this section and the certified state reports.

Section III excludes 12,661 enrollments in separate lab sections that are included in Section II. Section II contains 155,685 total enrollments for 2010FL. This section contains 143,024 enrollments.

Course Enrollments

Tables 12 and 13 exclude 12,661 enrollments in separate lab sections that are included in Table 2. Table 2 contains 155,685 total enrollments for 2010FL. Tables 12 and 13 contain 143,024 enrollments.

Table 12. 2010FL Enrollments by Department

Department	Campus					Total
	NE	NW	SE	SO	TR	
ABDR	0	0	0	132	0	132
ACCT	347	310	485	210	97	1449
ACNT	97	28	24	155	0	304
AERM	0	1035	0	0	0	1035
ANTH	32	80	110	0	71	293
ARCH	0	0	140	0	0	140
ARCT	0	0	17	0	0	17
ARTC	241	0	0	0	0	241
ARTS	1457	938	925	761	336	4417
ARTV	19	0	0	0	0	19
AUMT	0	0	0	455	0	455
AVNC	0	14	0	0	0	14
BCIS	1106	659	459	406	279	2909
BIOL	2660	1256	1576	1577	552	7621
BMGT	183	192	143	137	19	674
BUSG	22	225	16	12	0	275
BUSI	300	207	380	137	139	1163
CDEC	288	0	0	0	0	288
CETT	0	0	0	155	0	155
CHEF	0	0	180	0	0	180
CHEM	876	557	779	398	226	2836
CJLE	0	189	0	0	0	189
CJSA	0	36	0	0	0	36
CNBT	0	0	177	0	0	177
COMM	256	23	27	0	15	321
COSC	739	517	684	505	240	2685
CPMT	26	0	0	62	0	88
CRIJ	0	590	0	0	0	590
DAAC	178	0	0	0	0	178
DANC	336	323	190	239	0	1088
DFTG	0	0	0	214	0	214
DHYG	206	0	0	0	0	206
DRAM	356	328	400	268	47	1399
ECON	599	704	1129	671	156	3259
EDTC	7	0	0	0	0	7
EDUC	174	0	0	124	0	298

Department	Campus					Total
	NE	NW	SE	SO	TR	
EECT	19	0	0	5	0	24
ELPT	0	0	0	7	0	7
EMSP	444	0	0	0	0	444
ENGL	5316	4310	4386	2971	1676	18659
ENGR	0	0	204	99	0	303
ENTC	0	0	0	16	0	16
EPCT	0	32	0	0	0	32
ESOL	12	10	11	0	0	33
FDNS	0	0	134	0	0	134
FIRS	0	105	0	0	0	105
FIRT	0	185	0	0	0	185
FITT	0	22	0	0	0	22
FLMC	31	0	0	0	0	31
FREN	120	0	59	90	0	269
FSHN	24	0	0	0	0	24
GAME	20	0	0	58	0	78
GEOG	222	179	110	54	0	565
GEOL	493	379	426	304	154	1756
GERM	94	0	0	0	0	94
GISC	0	0	52	0	0	52
GOVT	2229	1539	2502	2078	778	9126
HALT	0	129	0	0	0	129
HAMG	0	0	202	0	0	202
HART	0	0	0	469	0	469
HECO	285	22	405	61	0	773
HIST	2420	1985	2836	2097	922	10260
HITT	49	0	0	0	0	49
HPRS	520	0	0	0	0	520
HRPO	23	40	62	74	0	199
HUMA	0	294	43	13	44	394
HYDR	0	0	0	7	0	7
IFWA	0	0	32	0	0	32
IMED	19	0	0	0	0	19
INDS	0	0	19	0	0	19
ITCC	146	0	17	49	0	212
ITNW	85	43	7	24	0	159
ITSC	160	47	95	55	0	357
ITSE	88	0	39	51	25	203
ITSW	28	37	25	97	0	187
ITSY	95	11	28	21	0	155
LGLA	434	0	0	0	48	482
LTCA	104	0	0	0	0	104
MAIR	0	0	0	46	0	46
MATH	4484	3638	5021	3041	2894	19078

Department	Campus					Total
	NE	NW	SE	SO	TR	
MILI	0	0	12	35	0	47
MRKG	54	212	108	183	44	601
MUAP	87	79	50	81	0	297
MUEN	88	11	80	62	0	241
MUSI	1028	346	492	520	110	2496
OSHT	0	4	0	0	0	4
PBAD	0	43	0	0	0	43
PHED	1598	1409	1387	1150	459	6003
PHIL	656	785	446	667	232	2786
PHTC	51	0	0	0	0	51
PHYS	257	88	207	133	0	685
POFI	40	137	23	88	0	288
POFT	204	118	122	231	0	675
PSTR	0	0	34	0	0	34
PSYC	1864	1287	1602	1196	493	6442
PSYT	135	0	0	0	0	135
PTHA	136	0	0	0	0	136
RADR	162	0	0	0	0	162
RBTC	0	0	0	40	0	40
RDNG	448	496	803	615	358	2720
RELE	272	0	0	0	0	272
RNSG	0	0	0	1349	0	1349
RSPT	169	0	0	0	0	169
RSTO	0	0	91	0	0	91
RTVB	154	0	0	0	0	154
SCWK	34	0	0	0	0	34
SLNG	0	0	0	0	362	362
SMER	0	0	0	45	0	45
SOCI	1106	684	1095	380	410	3675
SOCW	29	21	37	0	0	87
SPAN	621	464	348	382	130	1945
SPCH	2292	1312	1396	946	968	6914
SRGT	84	0	0	0	0	84
SRVY	0	0	14	0	0	14
STSC	410	385	554	423	331	2103
TECA	274	0	0	80	0	354
WLDG	0	0	0	120	0	120
TOTAL	40722	29099	33457	27131	12615	143024

Section IV

Course Enrollments by Course Number by Campus

LIMITATIONS OF STATISTICAL HANDBOOK DATA

Section IV contains data on TCCD credit students for Fall 2010 (does not include Continuing Education students). This section is based on data from the Datatel/Colleague system. Minor differences are to be expected between Datatel/Colleague reports that are run at different times; thus this data may vary slightly from other Datatel/Colleague reports.

Minor differences are to be expected between the data in this section and the certified state reports.

Section IV excludes 12,661 enrollments in separate lab sections that are included in Section II. Section II contains 155,685 total enrollments for 2010FL. This section contains 143,024 enrollments.

Table 13. 2010FL Enrollments by Course

Course	Campus					Total
	NE	NW	SE	SO	TR	
ABDR-1207	0	0	0	30	0	30
ABDR-1291	0	0	0	27	0	27
ABDR-1419	0	0	0	30	0	30
ABDR-1431	0	0	0	27	0	27
ABDR-1555	0	0	0	14	0	14
ABDR-1558	0	0	0	4	0	4
ACCT-2301	272	184	333	136	97	1022
ACCT-2302	75	126	152	74	0	427
ACNT-1303	26	0	0	43	0	69
ACNT-1311	18	19	0	19	0	56
ACNT-1313	52	9	0	11	0	72
ACNT-1329	0	0	0	36	0	36
ACNT-1331	0	0	24	21	0	45
ACNT-2303	0	0	0	25	0	25
ACNT-2380	1	0	0	0	0	1
AERM-1101	0	53	0	0	0	53
AERM-1205	0	50	0	0	0	50
AERM-1208	0	54	0	0	0	54
AERM-1240	0	43	0	0	0	43
AERM-1243	0	35	0	0	0	35
AERM-1254	0	35	0	0	0	35
AERM-1303	0	53	0	0	0	53
AERM-1310	0	70	0	0	0	70
AERM-1314	0	78	0	0	0	78
AERM-1315	0	44	0	0	0	44
AERM-1344	0	44	0	0	0	44
AERM-1345	0	49	0	0	0	49
AERM-1347	0	51	0	0	0	51
AERM-1349	0	42	0	0	0	42
AERM-1350	0	46	0	0	0	46
AERM-1351	0	31	0	0	0	31
AERM-1357	0	39	0	0	0	39
AERM-1456	0	35	0	0	0	35
AERM-2171	0	35	0	0	0	35
AERM-2172	0	38	0	0	0	38
AERM-2173	0	24	0	0	0	24
AERM-2252	0	31	0	0	0	31
AERM-2351	0	23	0	0	0	23
AERM-2447	0	32	0	0	0	32
ANTH-2346	32	80	110	0	71	293
ARCH-1301	0	0	23	0	0	23
ARCH-1303	0	0	17	0	0	17

Course	Campus					Total
	NE	NW	SE	SO	TR	
ARCH-1311	0	0	37	0	0	37
ARCH-2301	0	0	23	0	0	23
ARCH-2312	0	0	40	0	0	40
ARCT-1376	0	0	10	0	0	10
ARCT-2367	0	0	7	0	0	7
ARTC-1325	93	0	0	0	0	93
ARTC-1402	36	0	0	0	0	36
ARTC-1413	35	0	0	0	0	35
ARTC-1453	29	0	0	0	0	29
ARTC-2335	2	0	0	0	0	2
ARTC-2405	20	0	0	0	0	20
ARTC-2413	16	0	0	0	0	16
ARTC-2440	10	0	0	0	0	10
ARTS-1301	611	539	500	558	252	2460
ARTS-1303	100	35	56	23	20	234
ARTS-1304	49	0	0	0	0	49
ARTS-1311	88	68	28	17	0	201
ARTS-1312	9	5	0	6	0	20
ARTS-1316	147	89	105	49	50	440
ARTS-1317	14	11	14	5	14	58
ARTS-1320	0	0	19	0	0	19
ARTS-2313	17	0	14	8	0	39
ARTS-2314	0	0	0	2	0	2
ARTS-2316	55	54	76	26	0	211
ARTS-2317	13	9	10	5	0	37
ARTS-2323	4	9	0	0	0	13
ARTS-2326	7	5	15	11	0	38
ARTS-2327	0	2	0	0	0	2
ARTS-2333	9	0	14	17	0	40
ARTS-2334	4	0	2	1	0	7
ARTS-2341	0	0	14	0	0	14
ARTS-2346	55	70	40	29	0	194
ARTS-2347	27	18	4	4	0	53
ARTS-2348	28	20	14	0	0	62
ARTS-2349	3	4	0	0	0	7
ARTS-2356	179	0	0	0	0	179
ARTS-2357	38	0	0	0	0	38
ARTV-1403	19	0	0	0	0	19
AUMT-1253	0	0	0	58	0	58
AUMT-1257	0	0	0	53	0	53
AUMT-1307	0	0	0	57	0	57
AUMT-1310	0	0	0	53	0	53
AUMT-1313	0	0	0	15	0	15
AUMT-1357	0	0	0	16	0	16
AUMT-1380	0	0	0	17	0	17
AUMT-2209	0	0	0	47	0	47

Course	Campus					Total
	NE	NW	SE	SO	TR	
AUMT-2223	0	0	0	46	0	46
AUMT-2313	0	0	0	47	0	47
AUMT-2325	0	0	0	46	0	46
AVNC-1371	0	14	0	0	0	14
BCIS-1405	1106	659	459	406	279	2909
BIOL-1406	246	90	123	110	106	675
BIOL-1407	32	17	22	22	0	93
BIOL-1408	724	351	344	416	111	1946
BIOL-1409	242	46	97	88	0	473
BIOL-2306	24	0	0	48	0	72
BIOL-2316	0	29	27	22	0	78
BIOL-2401	781	461	553	547	195	2537
BIOL-2402	337	120	158	136	98	849
BIOL-2406	0	14	0	0	0	14
BIOL-2420	274	128	228	188	42	860
BIOL-2421	0	0	24	0	0	24
BMGT-1268	0	14	0	0	0	14
BMGT-1270	0	14	0	0	0	14
BMGT-1301	47	3	23	0	0	73
BMGT-1305	24	25	0	15	0	64
BMGT-1327	66	65	86	107	19	343
BMGT-1341	25	4	34	0	0	63
BMGT-1382	7	0	0	0	0	7
BMGT-1409	0	11	0	0	0	11
BMGT-2172	0	14	0	0	0	14
BMGT-2288	0	14	0	0	0	14
BMGT-2309	14	0	0	15	0	29
BMGT-2473	0	14	0	0	0	14
BMGT-2574	0	14	0	0	0	14
BUSG-1302	22	0	0	0	0	22
BUSG-1315	0	49	0	0	0	49
BUSG-1341	0	67	0	0	0	67
BUSG-2170	0	19	0	0	0	19
BUSG-2300	0	21	16	12	0	49
BUSG-2309	0	69	0	0	0	69
BUSI-1301	222	133	272	106	139	872
BUSI-2301	78	74	108	31	0	291
CDEC-1317	30	0	0	0	0	30
CDEC-1321	53	0	0	0	0	53
CDEC-1356	26	0	0	0	0	26
CDEC-1358	30	0	0	0	0	30
CDEC-1359	77	0	0	0	0	77
CDEC-1413	19	0	0	0	0	19
CDEC-1419	18	0	0	0	0	18
CDEC-2324	9	0	0	0	0	9
CDEC-2326	26	0	0	0	0	26

Course	Campus					Total
	NE	NW	SE	SO	TR	
CETT-1409	0	0	0	55	0	55
CETT-1431	0	0	0	29	0	29
CETT-1449	0	0	0	42	0	42
CETT-1457	0	0	0	8	0	8
CETT-2435	0	0	0	21	0	21
CHEF-1205	0	0	57	0	0	57
CHEF-1264	0	0	9	0	0	9
CHEF-1301	0	0	55	0	0	55
CHEF-1310	0	0	15	0	0	15
CHEF-1345	0	0	14	0	0	14
CHEF-2301	0	0	30	0	0	30
CHEM-1405	106	44	25	45	0	220
CHEM-1406	333	294	344	230	134	1335
CHEM-1407	10	0	0	0	0	10
CHEM-1411	293	136	265	90	92	876
CHEM-1412	67	47	74	20	0	208
CHEM-2423	53	36	71	13	0	173
CHEM-2425	14	0	0	0	0	14
CJLE-1111	0	6	0	0	0	6
CJLE-1371	0	38	0	0	0	38
CJLE-1394	0	121	0	0	0	121
CJLE-1506	0	6	0	0	0	6
CJLE-1512	0	6	0	0	0	6
CJLE-1518	0	6	0	0	0	6
CJLE-2247	0	6	0	0	0	6
CJSA-1347	0	21	0	0	0	21
CJSA-2334	0	12	0	0	0	12
CJSA-2388	0	3	0	0	0	3
CNBT-1300	0	0	37	0	0	37
CNBT-1311	0	0	36	0	0	36
CNBT-1342	0	0	16	0	0	16
CNBT-1344	0	0	18	0	0	18
CNBT-1346	0	0	19	0	0	19
CNBT-2266	0	0	1	0	0	1
CNBT-2317	0	0	9	0	0	9
CNBT-2342	0	0	41	0	0	41
COMM-1307	124	23	27	0	15	189
COMM-1316	6	0	0	0	0	6
COMM-1335	48	0	0	0	0	48
COMM-2305	4	0	0	0	0	4
COMM-2311	35	0	0	0	0	35
COMM-2339	21	0	0	0	0	21
COMM-2366	18	0	0	0	0	18
COSC-1401	588	400	603	471	240	2302
COSC-1420	0	14	0	0	0	14
COSC-1436	121	84	59	23	0	287

Course	Campus					Total
	NE	NW	SE	SO	TR	
COSC-1437	30	0	0	11	0	41
COSC-2425	0	0	22	0	0	22
COSC-2436	0	19	0	0	0	19
CPMT-1405	14	0	0	0	0	14
CPMT-1411	0	0	0	37	0	37
CPMT-1449	0	0	0	25	0	25
CPMT-2402	12	0	0	0	0	12
CRIJ-1301	0	170	0	0	0	170
CRIJ-1306	0	79	0	0	0	79
CRIJ-1307	0	81	0	0	0	81
CRIJ-1310	0	69	0	0	0	69
CRIJ-1313	0	1	0	0	0	1
CRIJ-2313	0	75	0	0	0	75
CRIJ-2314	0	31	0	0	0	31
CRIJ-2323	0	30	0	0	0	30
CRIJ-2328	0	54	0	0	0	54
DAAC-1304	58	0	0	0	0	58
DAAC-2166	1	0	0	0	0	1
DAAC-2266	12	0	0	0	0	12
DAAC-2307	34	0	0	0	0	34
DAAC-2341	58	0	0	0	0	58
DAAC-2343	15	0	0	0	0	15
DANC-1111	6	0	0	0	0	6
DANC-1112	4	13	0	0	0	17
DANC-1113	6	1	0	0	0	7
DANC-1128	12	9	0	0	0	21
DANC-1129	3	3	0	0	0	6
DANC-1141	11	8	0	0	0	19
DANC-1142	2	0	0	0	0	2
DANC-1145	12	19	0	0	0	31
DANC-1146	5	0	0	0	0	5
DANC-1147	16	5	0	0	0	21
DANC-1148	4	1	0	0	0	5
DANC-1151	19	18	12	21	0	70
DANC-1152	3	0	0	0	0	3
DANC-1210	0	0	15	0	0	15
DANC-1211	1	0	0	0	0	1
DANC-1301	4	19	0	0	0	23
DANC-1305	0	15	0	0	0	15
DANC-1341	11	5	19	17	0	52
DANC-1342	10	3	8	3	0	24
DANC-1345	64	44	52	58	0	218
DANC-1346	1	8	5	9	0	23
DANC-1347	25	14	50	44	0	133
DANC-1348	6	4	6	16	0	32
DANC-2110	1	0	0	0	0	1

Course	Campus					Total
	NE	NW	SE	SO	TR	
DANC-2111	1	0	0	0	0	1
DANC-2112	2	0	0	0	0	2
DANC-2141	4	10	0	0	0	14
DANC-2142	2	0	0	0	0	2
DANC-2145	1	17	0	0	0	18
DANC-2151	6	9	0	0	0	15
DANC-2152	2	0	0	0	0	2
DANC-2209	1	0	0	0	0	1
DANC-2303	91	98	23	71	0	283
DFTG-1405	0	0	0	44	0	44
DFTG-1409	0	0	0	23	0	23
DFTG-1417	0	0	0	16	0	16
DFTG-1425	0	0	0	36	0	36
DFTG-1491	0	0	0	14	0	14
DFTG-2419	0	0	0	20	0	20
DFTG-2430	0	0	0	17	0	17
DFTG-2431	0	0	0	13	0	13
DFTG-2438	0	0	0	5	0	5
DFTG-2440	0	0	0	13	0	13
DFTG-2450	0	0	0	13	0	13
DHYG-1207	24	0	0	0	0	24
DHYG-1215	22	0	0	0	0	22
DHYG-1235	22	0	0	0	0	22
DHYG-1239	22	0	0	0	0	22
DHYG-1301	24	0	0	0	0	24
DHYG-1311	22	0	0	0	0	22
DHYG-1327	24	0	0	0	0	24
DHYG-1431	24	0	0	0	0	24
DHYG-2360	22	0	0	0	0	22
DRAM-1120	24	41	35	16	0	116
DRAM-1121	0	6	0	7	0	13
DRAM-1161	4	0	0	0	0	4
DRAM-1310	162	163	160	39	22	546
DRAM-1320	12	0	0	0	0	12
DRAM-1330	0	4	12	10	0	26
DRAM-1351	41	40	95	11	25	212
DRAM-1352	6	5	0	6	0	17
DRAM-2120	0	0	11	1	0	12
DRAM-2331	0	1	0	1	0	2
DRAM-2351	4	0	0	0	0	4
DRAM-2366	103	68	87	177	0	435
ECON-2301	453	524	881	478	135	2471
ECON-2302	146	180	248	193	21	788
EDTC-1321	7	0	0	0	0	7
EDUC-1301	99	0	0	67	0	166
EDUC-1325	24	0	0	0	0	24

Course	Campus					Total
	NE	NW	SE	SO	TR	
EDUC-2301	51	0	0	57	0	108
EECT-1407	19	0	0	0	0	19
EECT-2439	0	0	0	5	0	5
ELPT-2455	0	0	0	7	0	7
EMSP-1160	105	0	0	0	0	105
EMSP-1355	14	0	0	0	0	14
EMSP-1356	24	0	0	0	0	24
EMSP-1438	23	0	0	0	0	23
EMSP-1501	105	0	0	0	0	105
EMSP-2160	24	0	0	0	0	24
EMSP-2161	14	0	0	0	0	14
EMSP-2162	5	0	0	0	0	5
EMSP-2163	22	0	0	0	0	22
EMSP-2243	27	0	0	0	0	27
EMSP-2267	27	0	0	0	0	27
EMSP-2338	4	0	0	0	0	4
EMSP-2430	4	0	0	0	0	4
EMSP-2444	13	0	0	0	0	13
EMSP-2458	22	0	0	0	0	22
EMSP-2534	11	0	0	0	0	11
ENGL-0324	452	369	387	258	162	1628
ENGL-0325	46	94	206	113	46	505
ENGL-1301	2716	2041	2248	1180	915	9100
ENGL-1302	1620	1075	923	825	340	4783
ENGL-2307	24	99	54	45	34	256
ENGL-2308	0	31	0	0	0	31
ENGL-2311	0	234	45	0	64	343
ENGL-2322	35	83	103	140	0	361
ENGL-2323	0	0	34	39	0	73
ENGL-2327	138	82	101	137	29	487
ENGL-2328	116	56	95	135	30	432
ENGL-2332	95	83	93	50	29	350
ENGL-2333	74	63	97	0	27	261
ENGL-2342	0	0	0	49	0	49
ENGR-1201	0	0	66	25	0	91
ENGR-1304	0	0	87	11	0	98
ENGR-1307	0	0	5	0	0	5
ENGR-2301	0	0	23	17	0	40
ENGR-2302	0	0	9	23	0	32
ENGR-2305	0	0	14	12	0	26
ENGR-2432	0	0	0	11	0	11
ENTC-2331	0	0	0	16	0	16
EPCT-1307	0	5	0	0	0	5
EPCT-1311	0	16	0	0	0	16
EPCT-1313	0	4	0	0	0	4
EPCT-1341	0	7	0	0	0	7

Course	Campus					Total
	NE	NW	SE	SO	TR	
ESOL-0301	12	0	6	0	0	18
ESOL-0303	0	4	0	0	0	4
ESOL-0304	0	0	5	0	0	5
ESOL-0306	0	1	0	0	0	1
ESOL-0307	0	3	0	0	0	3
ESOL-0310	0	2	0	0	0	2
FDNS-1103	0	0	31	0	0	31
FDNS-1164	0	0	3	0	0	3
FDNS-1309	0	0	24	0	0	24
FDNS-1341	0	0	24	0	0	24
FDNS-1346	0	0	11	0	0	11
FDNS-1371	0	0	23	0	0	23
FDNS-2164	0	0	5	0	0	5
FDNS-2400	0	0	13	0	0	13
FIRS-1301	0	21	0	0	0	21
FIRS-1313	0	21	0	0	0	21
FIRS-1319	0	21	0	0	0	21
FIRS-1323	0	21	0	0	0	21
FIRS-1329	0	21	0	0	0	21
FIRT-1301	0	27	0	0	0	27
FIRT-1307	0	30	0	0	0	30
FIRT-1311	0	30	0	0	0	30
FIRT-1333	0	28	0	0	0	28
FIRT-1338	0	21	0	0	0	21
FIRT-1349	0	17	0	0	0	17
FIRT-1391	0	10	0	0	0	10
FIRT-2309	0	16	0	0	0	16
FIRT-2331	0	5	0	0	0	5
FIRT-2388	0	1	0	0	0	1
FITT-2313	0	22	0	0	0	22
FLMC-1311	11	0	0	0	0	11
FLMC-2434	20	0	0	0	0	20
FREN-1100	22	0	0	4	0	26
FREN-1110	4	0	0	0	0	4
FREN-1411	62	0	43	61	0	166
FREN-1412	0	0	0	25	0	25
FREN-2311	10	0	16	0	0	26
FREN-2312	22	0	0	0	0	22
FSHN-2309	24	0	0	0	0	24
GAME-1304	0	0	0	16	0	16
GAME-1403	20	0	0	23	0	43
GAME-1406	0	0	0	19	0	19
GEOG-1301	140	48	39	0	0	227
GEOG-1302	0	25	34	17	0	76
GEOG-1303	82	106	37	37	0	262
GEOL-1305	27	57	0	0	0	84

Course	Campus					Total
	NE	NW	SE	SO	TR	
GEOL-1401	23	115	0	0	0	138
GEOL-1403	351	139	282	230	137	1139
GEOL-1404	69	24	122	74	17	306
GEOL-1405	0	22	0	0	0	22
GEOL-1445	23	22	22	0	0	67
GERM-1411	66	0	0	0	0	66
GERM-1412	15	0	0	0	0	15
GERM-2311	13	0	0	0	0	13
GISC-1402	0	0	23	0	0	23
GISC-2402	0	0	10	0	0	10
GISC-2404	0	0	9	0	0	9
GISC-2411	0	0	10	0	0	10
GOVT-2305	1270	907	1509	1078	496	5260
GOVT-2306	959	632	993	1000	282	3866
HALT-1301	0	40	0	0	0	40
HALT-1307	0	17	0	0	0	17
HALT-1309	0	7	0	0	0	7
HALT-1313	0	12	0	0	0	12
HALT-1317	0	17	0	0	0	17
HALT-2308	0	11	0	0	0	11
HALT-2320	0	12	0	0	0	12
HALT-2323	0	13	0	0	0	13
HAMG-1242	0	0	22	0	0	22
HAMG-1321	0	0	33	0	0	33
HAMG-1324	0	0	25	0	0	25
HAMG-1340	0	0	23	0	0	23
HAMG-2301	0	0	30	0	0	30
HAMG-2302	0	0	20	0	0	20
HAMG-2307	0	0	28	0	0	28
HAMG-2330	0	0	21	0	0	21
HART-1401	0	0	0	94	0	94
HART-1403	0	0	0	45	0	45
HART-1407	0	0	0	88	0	88
HART-1411	0	0	0	10	0	10
HART-1445	0	0	0	30	0	30
HART-2431	0	0	0	47	0	47
HART-2436	0	0	0	15	0	15
HART-2438	0	0	0	51	0	51
HART-2442	0	0	0	26	0	26
HART-2445	0	0	0	47	0	47
HART-2449	0	0	0	16	0	16
HECO-1307	175	0	0	0	0	175
HECO-1315	0	0	57	0	0	57
HECO-1322	91	22	348	61	0	522
HECO-2311	19	0	0	0	0	19
HIST-1301	1443	1081	1759	1049	508	5840

Course	Campus					Total
	NE	NW	SE	SO	TR	
HIST-1302	895	806	915	922	353	3891
HIST-2301	41	0	49	58	32	180
HIST-2311	0	0	113	43	0	156
HIST-2321	41	98	0	0	29	168
HIST-2389	0	0	0	25	0	25
HITT-1253	7	0	0	0	0	7
HITT-1401	14	0	0	0	0	14
HITT-1445	14	0	0	0	0	14
HITT-2260	7	0	0	0	0	7
HITT-2443	7	0	0	0	0	7
HPRS-1206	191	0	0	0	0	191
HPRS-1271	8	0	0	0	0	8
HPRS-2200	230	0	0	0	0	230
HPRS-2201	91	0	0	0	0	91
HRPO-1311	23	38	38	25	0	124
HRPO-2301	0	2	24	49	0	75
HUMA-1301	0	238	23	0	24	285
HUMA-1305	0	0	0	13	0	13
HUMA-1315	0	56	20	0	20	96
HYDR-1345	0	0	0	7	0	7
IFWA-2446	0	0	32	0	0	32
IMED-1416	19	0	0	0	0	19
INDS-1341	0	0	19	0	0	19
ITCC-1401	54	0	17	19	0	90
ITCC-1404	44	0	0	9	0	53
ITCC-2408	23	0	0	10	0	33
ITCC-2410	15	0	0	11	0	26
ITCC-2432	10	0	0	0	0	10
ITNW-1408	27	0	7	24	0	58
ITNW-1425	24	31	0	0	0	55
ITNW-1451	17	12	0	0	0	29
ITNW-1454	17	0	0	0	0	17
ITSC-1405	67	14	37	19	0	137
ITSC-1407	24	21	17	22	0	84
ITSC-1425	49	12	41	14	0	116
ITSC-1491	20	0	0	0	0	20
ITSE-1411	22	0	0	45	25	92
ITSE-1450	0	0	20	6	0	26
ITSE-2402	22	0	0	0	0	22
ITSE-2405	18	0	0	0	0	18
ITSE-2409	26	0	0	0	0	26
ITSE-2417	0	0	19	0	0	19
ITSW-1407	28	27	25	61	0	141
ITSW-1410	0	10	0	36	0	46
ITSY-1400	61	11	28	21	0	121
ITSY-2400	14	0	0	0	0	14

Course	Campus					Total
	NE	NW	SE	SO	TR	
ITSY-2401	20	0	0	0	0	20
LGLA-1303	59	0	0	0	21	80
LGLA-1305	55	0	0	0	0	55
LGLA-1307	77	0	0	0	27	104
LGLA-1345	56	0	0	0	0	56
LGLA-1353	70	0	0	0	0	70
LGLA-2281	3	0	0	0	0	3
LGLA-2288	2	0	0	0	0	2
LGLA-2303	67	0	0	0	0	67
LGLA-2311	22	0	0	0	0	22
LGLA-2380	23	0	0	0	0	23
LTCA-1311	27	0	0	0	0	27
LTCA-1312	28	0	0	0	0	28
LTCA-1313	15	0	0	0	0	15
LTCA-2314	15	0	0	0	0	15
LTCA-2315	14	0	0	0	0	14
LTCA-2660	3	0	0	0	0	3
LTCA-2661	2	0	0	0	0	2
MAIR-1449	0	0	0	46	0	46
MATH-0101	85	0	0	31	335	451
MATH-0102	113	0	0	48	333	494
MATH-0103	111	0	0	51	339	501
MATH-0104	65	0	0	40	213	318
MATH-0105	62	0	0	26	222	310
MATH-0106	58	0	0	24	229	311
MATH-0107	27	0	0	28	263	318
MATH-0108	1	0	0	22	272	295
MATH-0109	0	1	0	22	274	297
MATH-0302	666	719	947	458	54	2844
MATH-0304	635	792	816	600	28	2871
MATH-0350	1269	1070	1599	744	26	4708
MATH-1314	603	511	684	454	175	2427
MATH-1316	156	61	189	71	48	525
MATH-1324	96	53	89	24	0	262
MATH-1325	128	60	105	41	17	351
MATH-1332	17	24	0	12	0	53
MATH-1342	170	172	250	148	43	783
MATH-1350	18	59	29	51	0	157
MATH-1351	13	14	29	0	0	56
MATH-2315	27	13	49	0	0	89
MATH-2412	57	27	64	47	0	195
MATH-2414	44	18	88	24	0	174
MATH-2421	6	0	0	0	0	6
MATH-2513	57	44	83	75	23	282
MILI-0041	0	0	6	15	0	21
MILI-0042	0	0	0	3	0	3

Course	Campus					Total
	NE	NW	SE	SO	TR	
MILI-1001	0	0	6	17	0	23
MRKG-1302	0	45	18	0	0	63
MRKG-1311	54	48	67	160	44	373
MRKG-2333	0	50	23	23	0	96
MRKG-2348	0	46	0	0	0	46
MRKG-2349	0	23	0	0	0	23
MUAP-1190	29	20	11	30	0	90
MUAP-1191	0	11	0	6	0	17
MUAP-1290	39	23	23	37	0	122
MUAP-1291	8	25	11	8	0	52
MUAP-1292	6	0	3	0	0	9
MUAP-2291	5	0	1	0	0	6
MUAP-2292	0	0	1	0	0	1
MUEN-1121	0	0	0	28	0	28
MUEN-1122	20	0	17	12	0	49
MUEN-1132	0	0	9	0	0	9
MUEN-1133	34	0	23	0	0	57
MUEN-1141	34	0	31	22	0	87
MUEN-1142	0	11	0	0	0	11
MUSI-1163	10	0	0	0	0	10
MUSI-1164	1	0	0	0	0	1
MUSI-1181	53	10	45	34	0	142
MUSI-1182	9	0	2	5	0	16
MUSI-1183	12	0	0	8	0	20
MUSI-1192	26	0	23	9	0	58
MUSI-1193	0	0	0	3	0	3
MUSI-1211	15	8	16	16	0	55
MUSI-1216	13	8	22	16	0	59
MUSI-1301	157	13	91	56	18	335
MUSI-1304	15	0	0	0	0	15
MUSI-1306	660	254	278	334	92	1618
MUSI-1308	24	29	0	0	0	53
MUSI-1390	16	14	15	19	0	64
MUSI-2211	9	4	0	10	0	23
MUSI-2216	8	6	0	10	0	24
OSHT-1313	0	4	0	0	0	4
PBAD-1315	0	21	0	0	0	21
PBAD-2341	0	22	0	0	0	22
PHED-1101	0	0	18	0	0	18
PHED-1102	47	29	45	18	0	139
PHED-1104	13	11	35	20	0	79
PHED-1106	0	0	0	23	0	23
PHED-1107	25	0	37	0	13	75
PHED-1110	0	0	0	0	10	10
PHED-1111	32	10	12	0	0	54
PHED-1112	0	0	0	16	0	16

Course	Campus					Total
	NE	NW	SE	SO	TR	
PHED-1113	50	96	16	0	14	176
PHED-1115	12	0	0	14	0	26
PHED-1116	21	13	29	0	0	63
PHED-1117	0	8	0	0	0	8
PHED-1121	13	7	20	0	0	40
PHED-1122	25	12	15	17	0	69
PHED-1125	15	0	0	12	0	27
PHED-1128	0	7	7	16	0	30
PHED-1129	21	21	17	0	0	59
PHED-1130	0	0	0	38	0	38
PHED-1131	0	0	0	10	0	10
PHED-1132	0	13	0	0	0	13
PHED-1133	82	87	94	99	0	362
PHED-1134	108	83	82	73	14	360
PHED-1137	0	3	0	0	0	3
PHED-1138	0	1	0	0	0	1
PHED-1140	0	2	0	0	0	2
PHED-1142	3	11	0	0	0	14
PHED-1143	0	2	0	0	0	2
PHED-1144	0	2	0	0	0	2
PHED-1145	0	3	0	0	0	3
PHED-1148	73	15	46	46	0	180
PHED-1164	856	734	744	592	339	3265
PHED-1252	27	0	0	0	0	27
PHED-1304	0	12	0	0	27	39
PHED-1306	25	71	20	22	18	156
PHED-1338	20	69	24	22	0	135
PHED-2101	0	0	7	0	0	7
PHED-2102	7	2	2	5	0	16
PHED-2104	8	5	8	3	0	24
PHED-2107	12	0	7	0	10	29
PHED-2110	0	0	0	0	5	5
PHED-2111	8	4	10	0	0	22
PHED-2112	0	0	0	4	0	4
PHED-2113	7	16	4	0	0	27
PHED-2115	7	0	0	3	0	10
PHED-2116	0	3	9	0	0	12
PHED-2117	0	1	0	0	0	1
PHED-2121	5	4	3	0	0	12
PHED-2122	13	3	2	5	0	23
PHED-2123	0	0	6	0	0	6
PHED-2125	6	0	0	8	0	14
PHED-2128	0	10	17	12	0	39
PHED-2129	1	1	4	0	0	6
PHED-2130	0	0	0	9	0	9
PHED-2131	0	0	0	9	0	9

Course	Campus					Total
	NE	NW	SE	SO	TR	
PHED-2132	0	1	0	0	0	1
PHED-2133	21	19	37	29	0	106
PHED-2134	17	13	6	13	9	58
PHED-2146	7	2	0	0	0	9
PHED-2148	11	3	4	12	0	30
PHIL-1301	498	400	228	287	174	1587
PHIL-1304	39	203	35	164	28	469
PHIL-1316	40	19	35	14	0	108
PHIL-2303	41	20	31	25	0	117
PHIL-2306	38	143	117	177	30	505
PHTC-1300	37	0	0	0	0	37
PHTC-1353	14	0	0	0	0	14
PHYS-1401	84	52	86	66	0	288
PHYS-1402	0	0	22	0	0	22
PHYS-1403	47	0	0	0	0	47
PHYS-1404	23	0	0	28	0	51
PHYS-1405	6	0	0	0	0	6
PHYS-1415	29	16	0	19	0	64
PHYS-2425	48	20	53	20	0	141
PHYS-2426	20	0	46	0	0	66
POFI-1449	16	71	0	35	0	122
POFI-2401	24	37	23	33	0	117
POFI-2431	0	29	0	20	0	49
POFT-1127	66	9	31	30	0	136
POFT-1309	23	0	25	17	0	65
POFT-1319	0	47	0	0	0	47
POFT-1321	17	17	40	77	0	151
POFT-1329	7	10	9	71	0	97
POFT-1331	45	0	0	0	0	45
POFT-2301	2	35	0	32	0	69
POFT-2312	44	0	17	4	0	65
PSTR-1401	0	0	19	0	0	19
PSTR-2331	0	0	15	0	0	15
PSYC-1300	0	0	117	0	0	117
PSYC-2301	1268	781	1002	756	282	4089
PSYC-2302	19	0	25	58	19	121
PSYC-2306	81	88	0	28	29	226
PSYC-2308	72	165	39	39	4	319
PSYC-2314	258	217	290	173	121	1059
PSYC-2315	166	0	25	142	36	369
PSYC-2316	0	36	0	0	2	38
PSYC-2319	0	0	104	0	0	104
PSYT-2165	3	0	0	0	0	3
PSYT-2321	23	0	0	0	0	23
PSYT-2331	36	0	0	0	0	36
PSYT-2345	37	0	0	0	0	37

Course	Campus					Total
	NE	NW	SE	SO	TR	
PSYT-2370	36	0	0	0	0	36
PTHA-1201	24	0	0	0	0	24
PTHA-1321	24	0	0	0	0	24
PTHA-1431	24	0	0	0	0	24
PTHA-2260	16	0	0	0	0	16
PTHA-2261	16	0	0	0	0	16
PTHA-2409	16	0	0	0	0	16
PTHA-2431	16	0	0	0	0	16
RADR-1266	27	0	0	0	0	27
RADR-1313	27	0	0	0	0	27
RADR-2301	27	0	0	0	0	27
RADR-2309	27	0	0	0	0	27
RADR-2333	27	0	0	0	0	27
RADR-2366	27	0	0	0	0	27
RBTC-1401	0	0	0	35	0	35
RBTC-1447	0	0	0	5	0	5
RDNG-0361	394	425	685	515	336	2355
RDNG-0363	54	71	118	100	22	365
RELE-1301	85	0	0	0	0	85
RELE-1303	31	0	0	0	0	31
RELE-1311	69	0	0	0	0	69
RELE-1315	22	0	0	0	0	22
RELE-1319	23	0	0	0	0	23
RELE-2301	42	0	0	0	0	42
RNSG-1105	0	0	0	133	0	133
RNSG-1360	0	0	0	139	0	139
RNSG-1441	0	0	0	149	0	149
RNSG-1443	0	0	0	101	0	101
RNSG-1461	0	0	0	149	0	149
RNSG-1513	0	0	0	139	0	139
RNSG-2201	0	0	0	111	0	111
RNSG-2208	0	0	0	108	0	108
RNSG-2260	0	0	0	108	0	108
RNSG-2261	0	0	0	111	0	111
RNSG-2461	0	0	0	101	0	101
RSPT-1101	25	0	0	0	0	25
RSPT-1166	25	0	0	0	0	25
RSPT-1429	25	0	0	0	0	25
RSPT-2133	23	0	0	0	0	23
RSPT-2210	23	0	0	0	0	23
RSPT-2266	24	0	0	0	0	24
RSPT-2405	24	0	0	0	0	24
RSTO-1204	0	0	32	0	0	32
RSTO-1306	0	0	29	0	0	29
RSTO-1325	0	0	30	0	0	30
RTVB-1150	3	0	0	0	0	3

Course	Campus					Total
	NE	NW	SE	SO	TR	
RTVB-1355	29	0	0	0	0	29
RTVB-1402	20	0	0	0	0	20
RTVB-1409	41	0	0	0	0	41
RTVB-1425	49	0	0	0	0	49
RTVB-2265	6	0	0	0	0	6
RTVB-2487	6	0	0	0	0	6
SCWK-2305	34	0	0	0	0	34
SLNG-1215	0	0	0	0	59	59
SLNG-1347	0	0	0	0	52	52
SLNG-1350	0	0	0	0	23	23
SLNG-1404	0	0	0	0	97	97
SLNG-1444	0	0	0	0	89	89
SLNG-2166	0	0	0	0	18	18
SLNG-2402	0	0	0	0	24	24
SMER-1404	0	0	0	13	0	13
SMER-1425	0	0	0	12	0	12
SMER-1428	0	0	0	13	0	13
SMER-2450	0	0	0	7	0	7
SOCI-1301	1012	659	866	358	324	3219
SOCI-1306	68	25	47	0	80	220
SOCI-2301	26	0	108	22	3	159
SOCI-2326	0	0	0	0	2	2
SOCI-2336	0	0	74	0	1	75
SOCW-2361	29	21	37	0	0	87
SPAN-1100	61	49	0	0	11	121
SPAN-1110	16	0	0	0	0	16
SPAN-1411	305	242	227	256	64	1094
SPAN-1412	100	60	44	43	19	266
SPAN-2106	27	0	0	0	0	27
SPAN-2311	112	98	77	61	18	366
SPAN-2312	0	15	0	22	18	55
SPCH-1144	30	0	0	0	8	38
SPCH-1145	3	0	0	0	0	3
SPCH-1311	1586	886	918	751	531	4672
SPCH-1315	154	42	54	0	122	372
SPCH-1318	51	139	61	50	102	403
SPCH-1321	464	245	363	145	205	1422
SPCH-2144	4	0	0	0	0	4
SRGT-1266	28	0	0	0	0	28
SRGT-1405	28	0	0	0	0	28
SRGT-1409	28	0	0	0	0	28
SRVY-1301	0	0	14	0	0	14
STSC-0111	410	385	554	423	331	2103
TECA-1303	59	0	0	23	0	82
TECA-1311	63	0	0	0	0	63
TECA-1318	44	0	0	17	0	61

Course	Campus					Total
	NE	NW	SE	SO	TR	
TECA-1354	108	0	0	40	0	148
WLDG-1412	0	0	0	28	0	28
WLDG-1428	0	0	0	29	0	29
WLDG-1430	0	0	0	28	0	28
WLDG-1434	0	0	0	35	0	35
TOTAL	40722	29099	33457	27131	12615	143024

Section V

IPEDS Race &

Ethnicity Data

Section V contains ethnicity data of a format similar to previous Statistical Handbooks. For Tables 14 through 19, the race Hispanic was defined as anyone with Ethnicity equal to Hispanic/Latino. Tables 3 through 8 in Section II contain the raw data for the new categories of race and ethnicity. These changes in race and ethnicity are due to Federal reporting requirements. The data in this section may not be the correct categories for all applications (e.g. grant proposals).

LIMITATIONS OF STATISTICAL HANDBOOK DATA

Section V contains data on TCCD credit students for Fall 2010 (does not include Continuing Education students). This section is based on data from the Datatel/*Colleague* system. Minor differences are to be expected between Datatel/*Colleague* reports that are run at different times; thus this data may vary slightly from other Datatel/*Colleague* reports.

Minor differences are to be expected between the data in this section and the certified state reports.

Table 14. 2010FL Race/Ethnicity by Gender TCCD District

This page contains ethnicity data of a format similar to previous Statistical Handbooks. For this table, the race Hispanic was defined as anyone with Ethnicity equal to Hispanic/Latino. The data in this table may not be the correct categories for all applications (e.g. grant proposals).

		Gender		Total
		Female	Male	
American/Alaska Native	Count	141	106	247
	% within Race	57.1%	42.9%	100.0%
	% within Gender	.5%	.5%	.5%
Asian	Count	1624	1346	2970
	% within Race	54.7%	45.3%	100.0%
	% within Gender	5.7%	6.6%	6.0%
Black or African American	Count	5577	2877	8454
	% within Race	66.0%	34.0%	100.0%
	% within Gender	19.4%	14.1%	17.2%
Hawaiian/Pacific Islander	Count	30	18	48
	% within Race	62.5%	37.5%	100.0%
	% within Gender	.1%	.1%	.1%
Hispanic/Latino	Count	6369	4485	10854
	% within Race	58.7%	41.3%	100.0%
	% within Gender	22.2%	22.0%	22.1%
International	Count	267	176	443
	% within Race	60.3%	39.7%	100.0%
	% within Gender	.9%	.9%	.9%
Multi	Count	57	50	107
	% within Race	53.3%	46.7%	100.0%
	% within Gender	.2%	.2%	.2%
Race Unknown	Count	207	152	359
	% within Race	57.7%	42.3%	100.0%
	% within Gender	.7%	.7%	.7%
White	Count	14438	11188	25626
	% within Race	56.3%	43.7%	100.0%
	% within Gender	50.3%	54.8%	52.2%
Total	Count	28710	20398	49108
	% within Race	58.5%	41.5%	100.0%
	% within Gender	100.0%	100.0%	100.0%

Table 15. 2010FL Race/Ethnicity by Gender SO Campus

This page contains ethnicity data of a format similar to previous Statistical Handbooks. For this table, the race Hispanic was defined as anyone with Ethnicity equal to Hispanic/Latino. The data in this table may not be the correct categories for all applications (e.g. grant proposals).

		Gender		Total
		Female	Male	
American/Alaska Native	Count	32	22	54
	% within Race	59.3%	40.7%	100.0%
	% within Gender	.4%	.4%	.4%
Asian	Count	314	248	562
	% within Race	55.9%	44.1%	100.0%
	% within Gender	4.1%	5.1%	4.5%
Black or African American	Count	2101	938	3039
	% within Race	69.1%	30.9%	100.0%
	% within Gender	27.6%	19.1%	24.3%
Hawaiian/Pacific Islander	Count	5	2	7
	% within Race	71.4%	28.6%	100.0%
	% within Gender	.1%	.0%	.1%
Hispanic/Latino	Count	1586	1091	2677
	% within Race	59.2%	40.8%	100.0%
	% within Gender	20.8%	22.3%	21.4%
International	Count	59	42	101
	% within Race	58.4%	41.6%	100.0%
	% within Gender	.8%	.9%	.8%
Multi	Count	17	8	25
	% within Race	68.0%	32.0%	100.0%
	% within Gender	.2%	.2%	.2%
Race Unknown	Count	55	37	92
	% within Race	59.8%	40.2%	100.0%
	% within Gender	.7%	.7%	.7%
White	Count	3452	2515	5967
	% within Race	57.9%	42.1%	100.0%
	% within Gender	45.3%	51.3%	47.6%
Total	Count	7621	4903	12524
	% within Race	60.9%	39.1%	100.0%
	% within Gender	100.0%	100.0%	100.0%

Table 16. 2010FL Race/Ethnicity by Gender NE Campus

This page contains ethnicity data of a format similar to previous Statistical Handbooks. For this table, the race Hispanic was defined as anyone with Ethnicity equal to Hispanic/Latino. The data in this table may not be the correct categories for all applications (e.g. grant proposals).

		Gender		Total
		Female	Male	
American/Alaska Native	Count	55	32	87
	% within Race	63.2%	36.8%	100.0%
	% within Gender	.5%	.5%	.5%
Asian	Count	610	468	1078
	% within Race	56.6%	43.4%	100.0%
	% within Gender	5.8%	6.7%	6.2%
Black or African American	Count	1739	781	2520
	% within Race	69.0%	31.0%	100.0%
	% within Gender	16.7%	11.1%	14.4%
Hawaiian/Pacific Islander	Count	16	12	28
	% within Race	57.1%	42.9%	100.0%
	% within Gender	.2%	.2%	.2%
Hispanic/Latino	Count	1664	1042	2706
	% within Race	61.5%	38.5%	100.0%
	% within Gender	15.9%	14.9%	15.5%
International	Count	91	50	141
	% within Race	64.5%	35.5%	100.0%
	% within Gender	.9%	.7%	.8%
Multi	Count	16	16	32
	% within Race	50.0%	50.0%	100.0%
	% within Gender	.2%	.2%	.2%
Race Unknown	Count	73	56	129
	% within Race	56.6%	43.4%	100.0%
	% within Gender	.7%	.8%	.7%
White	Count	6180	4557	10737
	% within Race	57.6%	42.4%	100.0%
	% within Gender	59.2%	65.0%	61.5%
Total	Count	10444	7014	17458
	% within Race	59.8%	40.2%	100.0%
	% within Gender	100.0%	100.0%	100.0%

Table 17. 2010FL Race/Ethnicity by Gender NW Campus

This page contains ethnicity data of a format similar to previous Statistical Handbooks. For this table, the race Hispanic was defined as anyone with Ethnicity equal to Hispanic/Latino. The data in this table may not be the correct categories for all applications (e.g. grant proposals).

		Gender		Total
		Female	Male	
American/Alaska Native	Count	45	33	78
	% within Race	57.7%	42.3%	100.0%
	% within Gender	.6%	.6%	.6%
Asian	Count	330	265	595
	% within Race	55.5%	44.5%	100.0%
	% within Gender	4.1%	4.9%	4.4%
Black or African American	Count	1131	491	1622
	% within Race	69.7%	30.3%	100.0%
	% within Gender	14.1%	9.0%	12.1%
Hawaiian/Pacific Islander	Count	5	2	7
	% within Race	71.4%	28.6%	100.0%
	% within Gender	.1%	.0%	.1%
Hispanic/Latino	Count	1864	1332	3196
	% within Race	58.3%	41.7%	100.0%
	% within Gender	23.3%	24.5%	23.8%
International	Count	44	35	79
	% within Race	55.7%	44.3%	100.0%
	% within Gender	.5%	.6%	.6%
Multi	Count	15	13	28
	% within Race	53.6%	46.4%	100.0%
	% within Gender	.2%	.2%	.2%
Race Unknown	Count	67	33	100
	% within Race	67.0%	33.0%	100.0%
	% within Gender	.8%	.6%	.7%
White	Count	4504	3222	7726
	% within Race	58.3%	41.7%	100.0%
	% within Gender	56.3%	59.4%	57.5%
Total	Count	8005	5426	13431
	% within Race	59.6%	40.4%	100.0%
	% within Gender	100.0%	100.0%	100.0%

Table 18. 2010FL Race/Ethnicity by Gender SE Campus

This page contains ethnicity data of a format similar to previous Statistical Handbooks. For this table, the race Hispanic was defined as anyone with Ethnicity equal to Hispanic/Latino. The data in this table may not be the correct categories for all applications (e.g. grant proposals).

		Gender		Total
		Female	Male	
American/Alaska Native	Count	41	29	70
	% within Race	58.6%	41.4%	100.0%
	% within Gender	.5%	.5%	.5%
Asian	Count	706	611	1317
	% within Race	53.6%	46.4%	100.0%
	% within Gender	8.1%	10.2%	9.0%
Black or African American	Count	2219	1196	3415
	% within Race	65.0%	35.0%	100.0%
	% within Gender	25.4%	20.0%	23.2%
Hawaiian/Pacific Islander	Count	5	4	9
	% within Race	55.6%	44.4%	100.0%
	% within Gender	.1%	.1%	.1%
Hispanic/Latino	Count	1806	1160	2966
	% within Race	60.9%	39.1%	100.0%
	% within Gender	20.7%	19.4%	20.2%
International	Count	127	84	211
	% within Race	60.2%	39.8%	100.0%
	% within Gender	1.5%	1.4%	1.4%
Multi	Count	19	14	33
	% within Race	57.6%	42.4%	100.0%
	% within Gender	.2%	.2%	.2%
Race Unknown	Count	67	52	119
	% within Race	56.3%	43.7%	100.0%
	% within Gender	.8%	.9%	.8%
White	Count	3731	2821	6552
	% within Race	56.9%	43.1%	100.0%
	% within Gender	42.8%	47.2%	44.6%
Total	Count	8721	5971	14692
	% within Race	59.4%	40.6%	100.0%
	% within Gender	100.0%	100.0%	100.0%

Table 19. 2010FL Race/Ethnicity by Gender TR Campus

This page contains ethnicity data of a format similar to previous Statistical Handbooks. For this table, the race Hispanic was defined as anyone with Ethnicity equal to Hispanic/Latino. The data in this table may not be the correct categories for all applications (e.g. grant proposals).

		Gender		Total
		Female	Male	
American/Alaska Native	Count	17	11	28
	% within Race	60.7%	39.3%	100.0%
	% within Gender	.5%	.5%	.5%
Asian	Count	111	68	179
	% within Race	62.0%	38.0%	100.0%
	% within Gender	3.2%	3.3%	3.3%
Black or African American	Count	630	266	896
	% within Race	70.3%	29.7%	100.0%
	% within Gender	18.4%	13.0%	16.4%
Hawaiian/Pacific Islander	Count	2	2	4
	% within Race	50.0%	50.0%	100.0%
	% within Gender	.1%	.1%	.1%
Hispanic/Latino	Count	1114	685	1799
	% within Race	61.9%	38.1%	100.0%
	% within Gender	32.6%	33.6%	32.9%
International	Count	26	13	39
	% within Race	66.7%	33.3%	100.0%
	% within Gender	.8%	.6%	.7%
Multi	Count	10	4	14
	% within Race	71.4%	28.6%	100.0%
	% within Gender	.3%	.2%	.3%
Race Unknown	Count	19	20	39
	% within Race	48.7%	51.3%	100.0%
	% within Gender	.6%	1.0%	.7%
White	Count	1492	970	2462
	% within Race	60.6%	39.4%	100.0%
	% within Gender	43.6%	47.6%	45.1%
Total	Count	3421	2039	5460
	% within Race	62.7%	37.3%	100.0%
	% within Gender	100.0%	100.0%	100.0%

Section VI

Other Student & Enrollment Data

LIMITATIONS OF STATISTICAL HANDBOOK DATA

Section VI contains data on TCCD credit students for Fall 2010 (does not include Continuing Education students). This section is based on data from the Datatel/Colleague system. Minor differences are to be expected between Datatel/Colleague reports that are run at different times; thus this data may vary slightly from other Datatel/Colleague reports.

Minor differences are to be expected between the data in this section and the certified state reports.

Table 20. 2010FL Developmental Education Courses by Campus

Course	Campus					Total
	NE	NW	SE	SO	TR	
ENGL 0324	452	369	387	258	162	1628
ENGL 0325	46	94	206	113	46	505
ESOL 0301	12	0	6	0	0	18
ESOL 0303	0	4	0	0	0	4
ESOL 0304	0	0	5	0	0	5
ESOL 0306	0	1	0	0	0	1
ESOL 0307	0	3	0	0	0	3
ESOL 0310	0	2	0	0	0	2
MATH 0101	85	0	0	31	335	451
MATH 0102	113	0	0	48	333	494
MATH 0103	111	0	0	51	339	501
MATH 0104	65	0	0	40	213	318
MATH 0105	62	0	0	26	222	310
MATH 0106	58	0	0	24	229	311
MATH 0107	27	0	0	28	263	318
MATH 0108	1	0	0	22	272	295
MATH 0109	0	1	0	22	274	297
MATH 0302	666	719	947	458	54	2844
MATH 0304	635	792	816	600	28	2871
MATH 0350	1269	1070	1599	744	26	4708
RDNG 0361	394	425	685	515	336	2355
RDNG 0363	54	71	118	100	22	365
STSC 0111	410	385	554	423	331	2103
Total	4460	3936	5323	3503	3485	20707

Table 21. 2010FL Dual Credit Enrollments by Campus

Campus		Dual Credit
NE	Count	1944
	% within Dual Credit	29.6%
NW	Count	1534
	% within Dual Credit	23.3%
SE	Count	1990
	% within Dual Credit	30.3%
SO	Count	669
	% within Dual Credit	10.2%
TR	Count	436
	% within Dual Credit	6.6%
Total	Count	6573
	% within Dual Credit	100.0%

Please note: this table contains enrollments in either the Dual Credit Program or the Early High School Enrollment Program or both.

Table 22. 2010FL Distance Learning Enrollments by Campus

Campus		Instructional Method					Total	
		CD1	CDL	LA1	TV1	VCT		
NE	Count	0	5225	88	0	791	0	6104
	% within Instructional Method	.0%	27.5%	80.0%	.0%	27.9%	.0%	27.8%
NW	Count	0	5635	22	0	285	2	5944
	% within Instructional Method	.0%	29.7%	20.0%	.0%	10.1%	100.0%	27.1%
SE	Count	25	3265	0	0	233	0	3523
	% within Instructional Method	100.0%	17.2%	.0%	.0%	8.2%	.0%	16.0%
SO	Count	0	3451	0	18	1478	0	4947
	% within Instructional Method	.0%	18.2%	.0%	100.0%	52.2%	.0%	22.5%
TR	Count	0	1411	0	0	44	0	1455
	% within Instructional Method	.0%	7.4%	.0%	.0%	1.6%	.0%	6.6%
Total	Count	25	18987	110	18	2831	2	21973
	% within Instructional Method	100.0%	100.0%	100.0%	100.0%	100.0%	100.0%	100.0%

Table 23. 2010FL Weekend College Enrollments by Campus

Campus		Weekend College
NE	Count	1966
	% within Weekend College	28.7%
NW	Count	1765
	% within Weekend College	25.8%
SE	Count	1445
	% within Weekend College	21.1%
SO	Count	580
	% within Weekend College	8.5%
TR	Count	1089
	% within Weekend College	15.9%
Total	Count	6845
	% within Weekend College	100.0%

Table 24. Ratio Comparison of 2010FL data to 2009FL data

TERM: 2009FL		CREDIT STUDENTS - ALL ENROLLMENTS		
<i>Datatel XUHS run on 09/10/09 at 05:53:43.</i>				
CAMPUS	HEADCOUNT	NUMBER OF ENROLLMENTS	CONTACT HOURS	SEMESTER HOURS
Northeast	16,209	42,106	2,219,497	116,425
Northwest	11,548	27,268	1,402,184	75,769
Southeast	12,861	32,840	1,662,144	91,207
South	11,695	27,873	1,521,624	79,029
Trinity River	3,717	7,848	362,800	20,603
TOTAL	56,030	137,935	7,168,249	383,033
TCCD (Undupl)	44,355			

TERM: 2010FL		CREDIT STUDENTS - ALL ENROLLMENTS		
<i>Datatel XUHS run on 09/16/10 at 05:33:35.</i>				
CAMPUS	HEADCOUNT	NUMBER OF ENROLLMENTS	CONTACT HOURS	SEMESTER HOURS
Northeast	17,458	44,953	2,344,568	122,979
Northwest	13,431	31,293	1,598,382	86,959
Southeast	14,692	36,419	1,828,244	100,782
South	12,524	29,473	1,605,778	82,456
Trinity River	5,460	13,547	588,048	33,077
TOTAL	63,565	155,685	7,965,020	426,253
TCCD (Undupl)	49,108			

2010FL/2009FL RATIOS				
CAMPUS	HEADCOUNT	NUMBER OF ENROLLMENTS	CONTACT HOURS	SEMESTER HOURS
Northeast	1.077	1.068	1.056	1.056
Northwest	1.163	1.148	1.140	1.148
Southeast	1.142	1.109	1.100	1.105
South	1.071	1.057	1.055	1.043
Trinity River	1.469	1.726	1.621	1.605
TOTAL	1.134	1.129	1.111	1.113
TCCD (Undupl)	1.107			