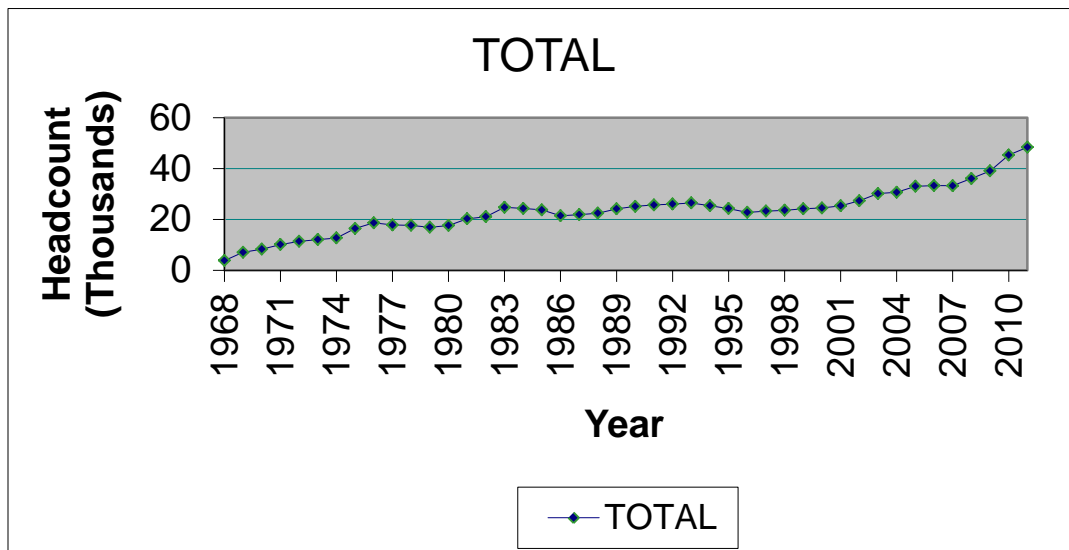


STATISTICAL HANDBOOK

2011SP

HEADCOUNT ENROLLMENTS SPRING SEMESTERS -- 1968 -- PRESENT



Office of Institutional Research

Tarrant County College

Table of Contents

TCCD 2011 Spring Semester Statistical Handbook

	Page
Introduction	1
Section I: Historical Data	2
Table 1. Headcount and Full-Time Equivalent	3
Figure 1. Headcount Enrollments by Campus, Spring Semesters	4
Section II: Demographic Data	5
Table 2. 2011 Spring Headcount, Enrollments, Contact Hours, and Semester Hours	6
Table 3. 2011 Spring – Race & Ethnicity by Gender – District	7
Table 4. 2011 Spring – Race & Ethnicity by Gender – South	8
Table 5. 2011 Spring – Race & Ethnicity by Gender – Northeast	9
Table 6. 2011 Spring – Race & Ethnicity by Gender – Northwest	10
Table 7. 2011 Spring – Race & Ethnicity by Gender – Southeast	11
Table 8. 2011 Spring – Race & Ethnicity by Gender – Trinity River	12
Table 9a. Average Age by Campus – Separated by Age Group	13
Table 9b. Average Age by Campus – Mean	13
Table 9c. Students by Zip Code	14
Table 10. Full/Part Time for District	17
Table 11. Full/Part Time by Campus	17
Section III: Course Enrollments by Department by Campus	18
Table 12. Enrollments by Department	19
Section IV: Course Enrollments by Course Number by Campus	22
Table 13. Enrollments by Course	23
Section V: IPEDS Race & Ethnicity Data	39
Table 14. 2011 Spring – Race/Ethnicity by Gender – District	40
Table 15. 2011 Spring – Race/Ethnicity by Gender – South	41
Table 16. 2011 Spring – Race/Ethnicity by Gender – Northeast	42
Table 17. 2011 Spring – Race/Ethnicity by Gender – Northwest	43
Table 18. 2011 Spring – Race/Ethnicity by Gender – Southeast	44
Table 19. 2011 Spring – Race/Ethnicity by Gender – Trinity River	45
Section VI: Other Student & Enrollment Data	46
Table 20. Developmental Education Courses by Campus	47
Table 21. Dual Credit Enrollments by Campus	48
Table 22. Distance Learning Enrollments by Campus	49
Table 23. Weekend College Enrollments by Campus	50
Table 24. Ratio Comparison of 2011SP data to 2010SP data	51

INTRODUCTION

This statistical handbook contains data on TCCD credit students for Spring 2011. It does not include Continuing Education students.

Table 2 contains information related to the source of the data in this report and how the data in this report relates to data in other reports such as the certified state reports. Minor differences are to be expected between Datatel/*Colleague* reports that are run at different times; this data may vary slightly from other Datatel/*Colleague* reports. Audit enrollments are included in this report.

If there are questions about this statistical handbook, please contact the TCCD Office of Institutional Research.

Section I

HISTORICAL DATA

LIMITATIONS OF STATISTICAL HANDBOOK DATA

Section I contains data on TCCD credit students for Spring 2011 (does not include Continuing Education students).

This section is based on data collected from the Datatel/*Colleague* system for all semesters beginning in the year 2004. All data identified which is prior to 2004 was collected utilizing the Legacy system. Minor differences are to be expected between Datatel/*Colleague* reports that are run at different times; thus this data may vary slightly from other Datatel/*Colleague* reports.

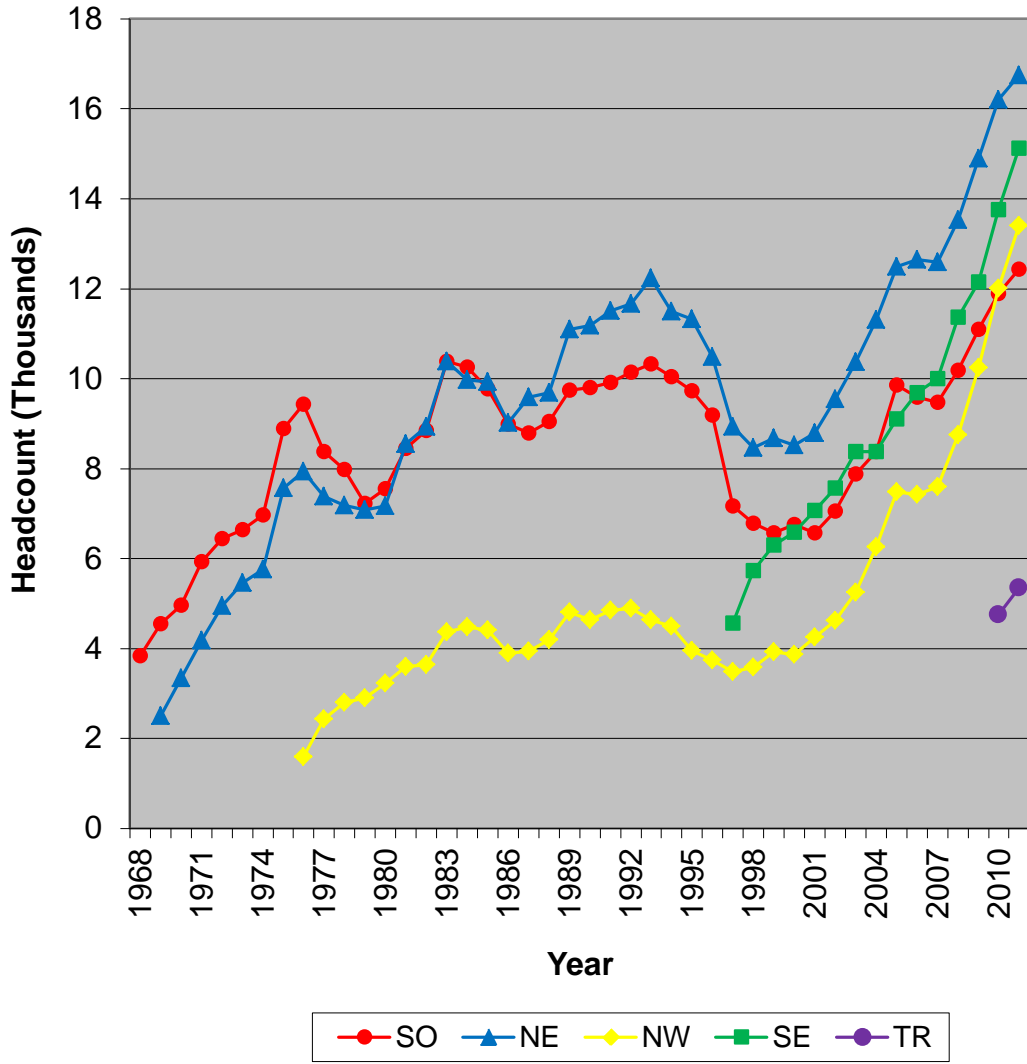
Minor differences are to be expected between the data in this section and the certified state reports.

**TABLE 1--SPRING SEMESTERS
HEADCOUNT AND FULL-TIME EQUIVALENT**

YEAR	District Total	Campus Totals		South			Northeast			Northwest			Southeast			Trinity River		
		HC	FTE	HC	FTE	% of Total	HC	FTE	% of Total	HC	FTE	% of Total	HC	FTE	% of Total	HC	FTE	% of Total
1976-77	17856	18190	10741	8374	5044	46.96	7379	4254	39.61	2437	1443	13.43						
1977-78	17671	17968	10160	7986	4617	45.44	7178	3957	38.95	2804	1586	15.61						
1978-79	16922	17218	9168	7233	3884	42.36	7079	3729	40.67	2906	1555	16.96						
1979-80	17633	17960	9507	7558	4047	42.57	7176	3743	39.37	3226	1717	18.06						
1980-81	20273	20598	10542	8447	4417	41.90	8554	4282	40.62	3597	1843	17.48						
1981-82	21087	21422	11085	8843	4636	41.82	8937	4579	41.31	3642	1870	16.87						
1982-83	24755	25151	12950	10393	5468	42.22	10386	5214	40.26	4372	2268	17.51						
1983-84	24311	24709	12572	10260	5298	42.14	9968	4996	39.74	4481	2278	18.12						
1984-85	23741	24116	11933	9770	4860	40.73	9937	4911	41.15	4409	2162	18.12						
1985-86	21451	21908	11038	8988	4457	40.38	9026	4635	41.99	3894	1946	17.63						
1986-87	21903	22328	11479	8793	4480	39.03	9595	4983	43.41	3940	2016	17.56						
1987-88	22468	22922	11732	9042	4532	38.63	9688	5091	43.39	4192	2109	17.98						
1988-89	25162	25653	12993	9747	4889	37.63	11103	5758	44.32	4803	2346	18.06						
1989-90	25132	25626	13101	9802	4968	37.92	11188	5806	44.32	4636	2327	17.76						
1990-91	25690	26278	13746	9919	5131	37.33	11510	6140	44.67	4849	2475	18.01						
1991-92	26048	26698	13971	10149	5203	37.24	11660	6233	44.61	4889	2535	18.14						
1992-93	26498	27202	14394	10322	5383	37.40	12238	6565	45.61	4642	2446	16.99						
1993-94	25403	26044	13739	10046	5242	38.15	11502	6135	44.65	4496	2362	17.19						
1994-95	24285	25040	13037	9736	5036	38.63	11350	5910	45.33	3954	2091	16.04						
1995-96	22792	23415	12384	9187	4892	39.50	10492	5510	44.49	3736	1982	16.00						
1996-97	23281	24152	12855	7168	3821	29.72	8931	4803	37.36	3486	1853	14.41	4567	2378	18.50			
1997-98	23603	24574	13101	6786	3587	27.38	8468	4522	34.52	3584	1862	14.21	5736	3130	23.89			
1998-99	24203	25475	13747	6573	3538	25.74	8678	4693	34.14	3928	2057	14.96	6296	3459	25.16			
1999-00	24519	25727	14017	6753	3661	26.12	8519	4625	33.00	3875	2051	14.63	6580	3680	26.25			
2000-01	25367	26690	14726	6575	3598	24.43	8788	4811	32.67	4255	2314	15.71	7072	4003	27.18			
2001-02	27345	28786	16123	7058	3964	24.59	9542	5309	32.93	4621	2513	15.59	7565	4337	26.90			
2002-03	30160	31875	17562	7881	4368	24.87	10368	5652	32.18	5253	2813	16.02	8373	4729	26.93			
2003-04	30670	34343	17752	8386	4225	23.80	11314	5865	33.04	6265	3110	17.52	8376	4552	25.64			
2004-05	33030	38937	19023	9855	4724	24.83	12496	6062	31.87	7485	3436	18.06	9099	4800	25.23			
2005-06	33313	39369	18832	9588	4485	23.82	12648	6119	32.49	7432	3326	17.66	9694	4901	26.02			
2006-07	33241	39675	18832	9470	4394	23.33	12595	6024	31.99	7590	3406	18.09	10002	5004	26.57			
2007-08	36082	43859	20150	10187	4596	22.81	13537	6408	31.80	8751	3777	18.74	11369	5367	26.64			
2008-09	39053	48408	22086	11101	4947	22.40	14903	7040	31.88	10247	4466	20.22	12157	5633	25.50			
2009-10	45323	58624	26115	11899	5289	20.25	16202	7504	28.73	12008	5138	19.67	13761	6350	24.32	4754	1833	7.02
2010-11	48376	63050	27812	12428	5387	19.37	16742	7627	27.42	13408	5661	20.35	15117	6950	24.99	5355	2187	7.86

Note: District total represents unduplicated headcount

Figure 1. Headcount Enrollments by Campus, Spring Semesters
Spring 1968 to Spring 2011



Section II

DEMOGRAPHIC DATA

Tables 3 through 8 in Section II contain the raw data for the new categories of race and ethnicity. These changes in race and ethnicity are due to Federal reporting requirements. Section V contains ethnicity data of a format similar to previous Statistical Handbooks.

LIMITATIONS OF STATISTICAL HANDBOOK DATA

Section II contains data on TCCD credit students for Spring 2011 (does not include Continuing Education students). This section is based on data from the Datatel/Colleague system. Minor differences are to be expected between Datatel/Colleague reports that are run at different times; thus this data may vary slightly from other Datatel/Colleague reports.

Minor differences are to be expected between the data in this section and the certified state reports.

Table 2. 2011SP Headcount, Enrollments, Contact Hours, and Semester Hours

UG CONTACT HOURS AND HEADCOUNT

TERM: 2011SP

CAMPUS	HEADCOUNT	CREDIT STUDENTS		SEMESTER HOURS	FTE
		NUMBER OF ENROLLMENTS	CONTACT HOURS		
Northeast	16,742	42,125	2,195,272	114,412	7,627
Northwest	13,408	30,394	1,569,680	84,919	5,661
Southeast	15,117	37,661	1,900,224	104,245	6,950
South	12,428	29,011	1,568,206	80,799	5,387
Trinity River	5,355	12,981	584,320	32,810	2,187
TOTAL (Dupl)	63,050	152,172	7,817,702	417,185	27,812
TOTAL (Undupl)	48,376				

Notes: This report was run on the Datatel/*Colleague* system using the semester as defined by the *Colleague* field Term.

This report includes all enrollments for the *Colleague* Term (semester) as of the run time. This data will differ from some other reports that only include enrollments in classes with an ODOR (Official Day of Record) on or before the official semester ODOR (i.e. some reports exclude some "miniterm" enrollments).

This report may differ from other *Colleague* reports with different run time/dates. The data in this Table 2 is based on an XUHS run made 2/7/2011 at 6:04:35.

This report will differ from the certified state reports. State reports use a different definition for semester.

Table 3. 2011SP Race & Ethnicity by Gender TCCD District

This page contains the raw data for the new categories of race and ethnicity. The changes in race and ethnicity are due to Federal reporting requirements. Section V contains ethnicity data of a format similar to previous Statistical Handbooks.

Female

	Ethnics				Total
Races		Ethnicity Unknown	Hispanic/Latino	Non Hispanic/Latino	
	23	1	5214	6	5244
American/Alaska Native	0	0	14	141	155
Asian	3	4	11	1573	1591
Black or African American	4	11	29	5726	5770
Hawaiian/Pacific Islander	0	0	2	30	32
International	11	193	21	31	256
Multi	0	2	16	63	81
Race Unknown	0	163	600	23	786
White	8	30	383	14119	14540
Total	49	404	6290	21712	28455

Male

	Ethnics				Total
Races		Ethnicity Unknown	Hispanic/Latino	Non Hispanic/Latino	
	13	0	3574	8	3595
American/Alaska Native	0	0	10	107	117
Asian	0	2	6	1338	1346
Black or African American	8	11	24	3035	3078
Hawaiian/Pacific Islander	0	0	4	26	30
International	3	143	22	24	192
Multi	0	1	4	52	57
Race Unknown	1	137	450	23	611
White	11	44	243	10597	10895
Total	36	338	4337	15210	19921

Table 4. 2011SP Race & Ethnicity by Gender SO Campus

This page contains the raw data for the new categories of race and ethnicity. The changes in race and ethnicity are due to Federal reporting requirements. Section V contains ethnicity data of a format similar to previous Statistical Handbooks.

Female

	Ethnics				Total
Races		Ethnicity Unknown	Hispanic/Latino	Non Hispanic/Latino	
	8	1	1455	3	1467
American/Alaska Native	0	0	1	42	43
Asian	0	0	2	283	285
Black or African American	2	2	4	2114	2122
Hawaiian/Pacific Islander	0	0	0	8	8
International	4	47	4	8	63
Multi	0	0	1	14	15
Race Unknown	0	57	81	4	142
White	2	3	71	3384	3460
Total	16	110	1619	5860	7605

Male

	Ethnics				Total
Races		Ethnicity Unknown	Hispanic/Latino	Non Hispanic/Latino	
	6	0	975	1	982
American/Alaska Native	0	0	1	25	26
Asian	0	1	0	231	232
Black or African American	1	3	9	967	980
Hawaiian/Pacific Islander	0	0	1	2	3
International	0	36	2	7	45
Multi	0	0	2	7	9
Race Unknown	0	30	52	4	86
White	3	2	39	2416	2460
Total	10	72	1081	3660	4823

Table 5. 2011SP Race & Ethnicity by Gender NE Campus

This page contains the raw data for the new categories of race and ethnicity. The changes in race and ethnicity are due to Federal reporting requirements. Section V contains ethnicity data of a format similar to previous Statistical Handbooks.

Female

	Ethnics				Total
Races		Ethnicity Unknown	Hispanic/Latino	Non Hispanic/Latino	
	9	0	1243	2	1254
American/Alaska Native	0	0	3	58	61
Asian	2	3	4	567	576
Black or African American	1	7	13	1718	1739
Hawaiian/Pacific Islander	0	0	1	14	15
International	3	65	4	12	84
Multi	0	0	6	17	23
Race Unknown	0	53	225	9	287
White	3	16	131	5956	6106
Total	18	144	1630	8353	10145

Male

	Ethnics				Total
Races		Ethnicity Unknown	Hispanic/Latino	Non Hispanic/Latino	
	2	0	760	1	763
American/Alaska Native	0	0	6	32	38
Asian	0	0	1	427	428
Black or African American	2	4	3	766	775
Hawaiian/Pacific Islander	0	0	1	16	17
International	2	42	6	7	57
Multi	0	0	2	16	18
Race Unknown	1	56	150	12	219
White	7	29	70	4176	4282
Total	14	131	999	5453	6597

Table 6. 2011SP Race & Ethnicity by Gender NW Campus

This page contains the raw data for the new categories of race and ethnicity. The changes in race and ethnicity are due to Federal reporting requirements. Section V contains ethnicity data of a format similar to previous Statistical Handbooks.

Female

	Ethnics				Total
Races		Ethnicity Unknown	Hispanic/Latino	Non Hispanic/Latino	
	4	0	1569	0	1573
American/Alaska Native	0	0	3	43	46
Asian	0	1	2	319	322
Black or African American	0	2	10	1235	1247
Hawaiian/Pacific Islander	0	0	0	6	6
International	2	35	4	0	41
Multi	0	1	3	21	25
Race Unknown	0	52	121	4	177
White	2	11	138	4520	4671
Total	8	102	1850	6148	8108

Male

	Ethnics				Total
Races		Ethnicity Unknown	Hispanic/Latino	Non Hispanic/Latino	
	4	0	1034	0	1038
American/Alaska Native	0	0	2	31	33
Asian	0	0	2	262	264
Black or African American	0	0	6	532	538
Hawaiian/Pacific Islander	0	0	0	4	4
International	0	22	4	5	31
Multi	0	0	1	19	20
Race Unknown	0	26	101	7	134
White	1	7	86	3144	3238
Total	5	55	1236	4004	5300

Table 7. 2011SP Race & Ethnicity by Gender SE Campus

This page contains the raw data for the new categories of race and ethnicity. The changes in race and ethnicity are due to Federal reporting requirements. Section V contains ethnicity data of a format similar to previous Statistical Handbooks.

Female

	Ethnics				Total
Races		Ethnicity Unknown	Hispanic/Latino	Non Hispanic/Latino	
	5	0	1620	3	1628
American/Alaska Native	0	0	7	37	44
Asian	0	0	5	728	733
Black or African American	2	2	9	2351	2364
Hawaiian/Pacific Islander	0	0	1	5	6
International	5	89	10	13	117
Multi	0	0	4	22	26
Race Unknown	0	54	120	10	184
White	1	3	107	3831	3942
Total	13	148	1883	7000	9044

Male

	Ethnics				Total
Races		Ethnicity Unknown	Hispanic/Latino	Non Hispanic/Latino	
	4	0	1034	7	1045
American/Alaska Native	0	0	1	31	32
Asian	0	1	2	634	637
Black or African American	3	3	10	1237	1253
Hawaiian/Pacific Islander	0	0	2	6	8
International	1	74	6	12	93
Multi	0	0	1	18	19
Race Unknown	0	48	91	3	142
White	2	6	62	2774	2844
Total	10	132	1209	4722	6073

Table 8. 2011SP Race & Ethnicity by Gender TR Campus

This page contains the raw data for the new categories of race and ethnicity. The changes in race and ethnicity are due to Federal reporting requirements. Section V contains ethnicity data of a format similar to previous Statistical Handbooks.

Female

	Ethnics				Total
Races		Ethnicity Unknown	Hispanic/Latino	Non Hispanic/Latino	
	3	0	826	0	829
American/Alaska Native	0	0	1	13	14
Asian	1	0	3	95	99
Black or African American	0	0	4	702	706
Hawaiian/Pacific Islander	0	0	0	2	2
International	1	14	1	2	18
Multi	0	2	2	9	13
Race Unknown	0	19	190	3	212
White	4	1	49	1405	1459
Total	9	36	1076	2231	3352

Male

	Ethnics				Total
Races		Ethnicity Unknown	Hispanic/Latino	Non Hispanic/Latino	
	0	0	550	1	551
American/Alaska Native	0	0	2	11	13
Asian	0	0	1	64	65
Black or African American	3	1	1	293	298
Hawaiian/Pacific Islander	0	0	0	2	2
International	0	10	4	0	14
Multi	0	1	0	5	6
Race Unknown	0	24	120	2	146
White	0	6	20	882	908
Total	3	42	698	1260	2003

Table 9a. 2011SP Age by Campus

		Campus					Total
		NE	NW	SE	SO	TR	
Under 21	Count	5202	4335	6042	3437	1892	20908
	% within Campus	31.1%	32.3%	40.0%	27.7%	35.3%	33.2%
21-25	Count	4714	3794	4172	3484	1499	17663
	% within Campus	28.2%	28.3%	27.6%	28.0%	28.0%	28.0%
26-30	Count	2556	1995	1880	1960	757	9148
	% within Campus	15.3%	14.9%	12.4%	15.8%	14.1%	14.5%
31-35	Count	1487	1205	1099	1241	421	5453
	% within Campus	8.9%	9.0%	7.3%	10.0%	7.9%	8.6%
36-40	Count	1050	849	779	858	309	3845
	% within Campus	6.3%	6.3%	5.2%	6.9%	5.8%	6.1%
Over 40	Count	1733	1230	1145	1448	477	6033
	% within Campus	10.4%	9.2%	7.6%	11.7%	8.9%	9.6%
Total	Count	16742	13408	15117	12428	5355	63050
	% within Campus	100.0%	100.0%	100.0%	100.0%	100.0%	100.0%

Table 9b. 2011SP Average Age by Campus

NE	NW	SE	SO	TR	TCCD
27.33	26.88	25.54	28.03	26.50	26.59*

* The TCCD average age of 26.59 is based on the average age of the unduplicated enrollment count of 48,376.

Table 9c. 2011SP Students by ZIP Code

Zip Code	Campus					Total
	NE	NW	SE	SO	TR	
76063	253	203	1626	374	77	2533
76137	903	936	168	216	144	2367
75052	234	154	1315	230	54	1987
76017	237	167	1094	415	74	1987
76179	278	1170	98	146	108	1800
76180	1119	248	77	141	63	1648
76248	891	493	98	118	45	1645
76133	163	208	127	796	218	1512
76002	145	122	992	169	35	1463
76001	159	112	913	230	46	1460
76018	157	112	942	178	34	1423
76014	163	123	901	157	32	1376
76016	153	115	605	345	59	1277
76131	243	714	66	121	73	1217
76123	149	151	120	610	178	1208
76108	148	673	70	166	141	1198
76028	155	150	181	609	94	1189
76010	144	99	767	133	38	1181
76116	150	382	75	311	262	1180
76244	444	485	64	106	56	1155
76021	740	143	89	108	41	1121
76039	685	131	110	82	34	1042
76013	194	87	517	175	54	1027
76112	309	101	105	287	163	965
76119	124	95	82	522	105	928
76051	694	79	63	58	17	911
76148	498	237	55	78	36	904
76053	572	109	66	77	40	864
76110	85	89	52	355	259	840
76006	243	94	357	100	41	835
76106	100	501	37	62	135	835
76134	94	100	63	472	102	831
76140	99	79	107	470	68	823
76132	94	152	65	369	122	802
76117	369	211	37	71	107	795
76036	89	103	91	430	67	780
76114	76	328	34	70	205	713
76040	470	74	76	52	23	695
76135	90	437	44	54	54	679
76015	83	59	367	143	25	677
76107	89	153	42	126	250	660
76012	184	65	265	90	32	636
76011	150	65	279	71	28	593
76020	68	373	23	48	28	540
76182	359	89	24	43	15	530

Zip Code	Campus					Total
	NE	NW	SE	SO	TR	
76126	67	192	34	165	68	526
76092	416	37	15	40	9	517
76034	408	46	22	27	12	515
76120	194	66	65	125	65	515
76111	110	126	25	47	199	507
76052	125	261	34	38	23	481
76262	234	144	27	43	20	468
76022	299	72	34	37	12	454
76118	298	53	28	44	30	453
76105	44	45	34	196	94	413
76109	48	77	32	129	116	402
76104	43	38	27	167	116	391
76115	34	37	23	216	73	383
76103	106	46	24	107	98	381
76054	256	38	25	34	7	360
76164	34	140	15	20	131	340
75050	89	35	141	30	11	306
76060	25	16	74	115	13	243
76102	34	36	19	52	87	228
76177	53	112	17	24	12	218
75054	14	13	136	23	5	191
76009	23	20	60	71	6	180
76247	46	88	7	15	14	170
75051	21	20	101	9	6	157
76058	24	20	18	79	12	153
76008	15	59	8	26	19	127
76155	69	21	18	13	5	126
75104	14	6	74	13	5	112
76082	16	57	6	17	5	101
76065	18	6	55	19	2	100
76087	11	44	4	18	9	86
76049	12	24	13	26	7	82
76078	19	50	3	8	2	82
75067	34	11	8	8	1	62
76048	7	17	6	22	10	62
76084	2	4	37	14	2	59
76085	9	40	3	5	2	59
75062	31	11	5	5	2	54
76033	7	5	6	24	8	50
76031	5	5	3	29	7	49
76023	10	25	4	3	3	45
76071	8	27	6	3	0	44
75038	14	12	7	4	2	39
75115	6	7	15	8	0	36
76234	11	11	2	4	5	33
75028	18	8	5	1	0	32
76086	6	9	3	8	6	32

Zip Code	Campus					Total
	NE	NW	SE	SO	TR	
75165	4	5	9	8	0	26
76059	2	6	3	9	6	26
76088	6	9	2	3	6	26
75154	4	1	14	5	1	25
76096	5	3	11	5	1	25
75060	12	3	7	2	0	24
75249	2	0	20	1	1	24
76003	6	3	9	4	2	24
75137	5	2	11	2	3	23
76127	3	18	0	1	1	23
75061	13	4	1	3	0	21
75063	12	3	3	2	0	20
76401	3	5	3	6	3	20
76426	3	8	1	5	3	20
75116	1	3	10	4	1	19
76226	8	3	3	3	2	19
75019	10	4	1	3	0	18
75217	4	7	5	2	0	18
76073	5	9	2	2	0	18
76098	5	9	1	2	1	18
76201	5	5	2	5	1	18
75211	1	3	10	2	1	17
76007	5	2	6	3	1	17
76095	12	2	2	1	0	17
75134	3	3	7	2	1	16
75237	2	2	7	4	1	16
76050	2	2	5	6	1	16
76208	7	4	1	3	1	16
75077	6	3	2	3	1	15
75236	3	2	8	2	0	15
75287	6	4	2	2	1	15
76210	5	6	1	3	0	15
Other	339	257	271	205	92	1164
Total	16742	13408	15117	12428	5355	63050

** Zip Code groups with < 15 and student groups without Zip Codes are identified as Other.

Table 10. 2011SP Full/Part Time for TCCD

	Frequency	Percent	Valid Percent	Cumulative Percent
Part Time	32081	66.3	66.3	66.3
Full Time	16295	33.7	33.7	100.0
Total	48376	100.0	100.0	

Table 10 is the full/part time student data for the TCCD district as a whole.

Table 11. 2011SP Full/Part Time by Campus

Campus		Full/Part Time		Total
		Part Time	Full Time	
NE	Count	13622	3120	16742
	% within Campus	81.4%	18.6%	100.0%
	% within Full/Part Time	26.2%	28.2%	26.6%
NW	Count	11279	2129	13408
	% within Campus	84.1%	15.9%	100.0%
	% within Full/Part Time	21.7%	19.2%	21.3%
SE	Count	12034	3083	15117
	% within Campus	79.6%	20.4%	100.0%
	% within Full/Part Time	23.2%	27.8%	24.0%
SO	Count	10468	1960	12428
	% within Campus	84.2%	15.8%	100.0%
	% within Full/Part Time	20.1%	17.7%	19.7%
TR	Count	4567	788	5355
	% within Campus	85.3%	14.7%	100.0%
	% within Full/Part Time	8.8%	7.1%	8.5%
Total	Count	51970	11080	63050
	% within Campus	82.4%	17.6%	100.0%
	% within Full/Part Time	100.0%	100.0%	100.0%

Table 11 is the full/part time student data for each individual campus. For this table, only enrollments at the individual campus are considered. For example, if a student took 9 hours at SO and 3 hours at NE, the student is listed as part time at SO and part time at NE (and full time in Table 10).

Section III

Course Enrollments by Department by Campus

LIMITATIONS OF STATISTICAL HANDBOOK DATA

Section III contains data on TCCD credit students for Spring 2011 (does not include Continuing Education students). This section is based on data from the Datatel/Colleague system. Minor differences are to be expected between Datatel/Colleague reports that are run at different times; thus this data may vary slightly from other Datatel/Colleague reports.

Minor differences are to be expected between the data in this section and the certified state reports.

Section III excludes 12,540 enrollments in separate lab sections that are included in Section II. Section II contains 152,172 total enrollments for 2011SP. This section contains 139,632 enrollments.

Course Enrollments

Tables 12 and 13 exclude 12,540 enrollments in separate lab sections that are included in Table 2. Table 2 contains 152,172 total enrollments for 2011SP. Tables 12 and 13 contain 139,632 enrollments.

Table 12. 2011SP Enrollments by Department

Department	Campus					Total
	NE	NW	SE	SO	TR	
ABDR	0	0	0	66	0	66
ACCT	424	380	474	220	139	1637
ACNT	50	48	24	171	0	293
AERM	0	1131	0	0	0	1131
ANTH	36	0	0	0	35	71
ARCE	0	0	6	0	0	6
ARCH	0	0	168	0	0	168
ARCT	0	0	5	0	0	5
ARTC	224	0	0	0	0	224
ARTS	1334	876	996	739	313	4258
ARTV	20	0	0	0	0	20
AUMT	0	0	0	433	0	433
AVNC	0	13	0	0	0	13
BCIS	948	572	601	434	303	2858
BIOL	2740	1078	1792	1644	444	7698
BMGT	192	236	135	146	0	709
BNKG	0	0	0	15	0	15
BUSG	58	302	35	25	0	420
BUSI	334	271	243	134	70	1052
CDEC	352	0	0	0	0	352
CETT	0	0	0	144	0	144
CHEF	0	0	179	0	0	179
CHEM	771	468	773	384	218	2614
CJLE	0	190	0	0	0	190
CJSA	0	18	0	0	0	18
CNBT	0	0	160	0	0	160
COMM	238	29	30	0	18	315
COSC	597	640	755	462	211	2665
CPMT	15	0	0	41	0	56
CRIJ	56	631	0	0	0	687
CSIR	0	0	0	14	0	14
DAAC	124	0	0	0	0	124
DANC	369	322	174	238	0	1103
DFTG	0	0	0	238	0	238
DHYG	158	0	0	0	0	158
DRAM	356	281	336	243	25	1241
ECON	546	582	1132	573	218	3051
EDTC	21	0	0	0	0	21

Department	Campus					Total
	NE	NW	SE	SO	TR	
EDUC	175	0	0	156	0	331
Edwa	0	0	0	5	0	5
EECT	0	0	0	6	0	6
ELPT	0	0	0	7	0	7
EMSP	254	0	0	0	0	254
ENGL	4266	3983	4766	2887	1731	17633
ENGR	0	0	222	77	0	299
EPCT	0	61	0	0	0	61
ESOL	31	11	69	0	0	111
FDNS	0	0	131	0	0	131
FIRS	0	120	0	0	0	120
FIRT	0	186	0	0	0	186
FITT	0	22	0	0	0	22
FLMC	41	0	0	0	0	41
FREN	129	0	33	91	0	253
FSHN	26	0	0	0	0	26
GAME	0	22	0	44	0	66
GEOG	141	221	70	52	0	484
GEOL	447	343	429	297	154	1670
GERM	86	0	0	0	0	86
GISC	0	0	41	0	0	41
GOVT	2097	1440	2445	1979	742	8703
HALT	0	95	0	0	0	95
HAMG	0	0	188	0	0	188
HART	0	0	0	482	0	482
HECO	303	30	374	58	0	765
HIST	2231	1879	3000	2074	1122	10306
HITT	41	0	0	0	0	41
HPRS	568	0	0	0	0	568
HRPO	26	25	63	74	0	188
HUMA	0	354	77	17	18	466
IFWA	0	0	30	0	0	30
IMED	35	0	0	0	0	35
INEW	20	0	0	0	0	20
ITCC	179	0	25	38	0	242
ITNW	119	59	8	44	0	230
ITSC	191	62	59	25	0	337
ITSE	60	0	66	49	0	175
ITSW	28	29	36	95	0	188
ITSY	108	12	21	35	0	176
LGLA	373	0	0	0	39	412
LTCA	92	0	0	0	0	92
MAIR	0	0	0	49	0	49
MATH	4577	3785	4920	3276	2857	19415
MILI	0	0	14	21	0	35
MRKG	42	233	78	152	21	526
MTRC	0	0	0	13	0	13

Department	Campus					Total
	NE	NW	SE	SO	TR	
MUAP	105	93	65	94	0	357
MUEN	96	16	67	32	0	211
MUSI	980	325	420	328	139	2192
OSHT	0	10	0	0	0	10
PBAD	0	62	0	0	0	62
PHED	1467	1432	1609	1077	465	6050
PHIL	650	886	437	658	222	2853
PHTC	73	0	0	0	0	73
PHYS	335	86	238	121	23	803
POFI	26	158	0	96	0	280
POFT	216	104	114	168	0	602
PSTR	0	0	18	0	0	18
PSYC	1760	1246	1806	1016	478	6306
PSYT	173	0	0	0	0	173
PTHA	96	0	0	0	0	96
PTRT	0	0	0	3	0	3
RADR	187	0	0	0	0	187
RBTC	0	0	0	39	0	39
RDNG	314	491	778	604	330	2517
RELE	252	0	0	0	0	252
RNSG	0	0	0	1542	0	1542
RSPT	212	0	0	0	0	212
RSTO	0	0	65	0	0	65
RTVB	197	0	0	0	0	197
SCWK	29	0	0	0	0	29
SLNG	0	0	0	0	344	344
SMER	0	0	0	31	0	31
SOCI	955	519	991	329	356	3150
SOCW	61	19	39	0	0	119
SPAN	637	460	483	325	165	2070
SPCH	1807	1264	1679	999	697	6446
SRGT	72	0	0	0	0	72
SRVY	0	0	9	0	0	9
STSC	330	285	390	469	245	1719
TECA	215	0	0	83	0	298
TRVM	0	0	71	0	0	71
WLDG	0	0	0	157	0	157
TOTAL	37894	28496	34462	26638	12142	139632

Section IV

Course Enrollments by Course Number by Campus

LIMITATIONS OF STATISTICAL HANDBOOK DATA

Section IV contains data on TCCD credit students for Spring 2011 (does not include Continuing Education students). This section is based on data from the Datatel/Colleague system. Minor differences are to be expected between Datatel/Colleague reports that are run at different times; thus this data may vary slightly from other Datatel/Colleague reports.

Minor differences are to be expected between the data in this section and the certified state reports.

Section IV excludes 12,540 enrollments in separate lab sections that are included in Section II. Section II contains 152,172 total enrollments for 2011SP. This section contains 139,632 enrollments.

Table 13. 2011SP Enrollments by Course

Course	Campus					Total
	NE	NW	SE	SO	TR	
ABDR-2502	0	0	0	17	0	17
ABDR-2537	0	0	0	21	0	21
ABDR-2549	0	0	0	18	0	18
ABDR-2551	0	0	0	10	0	10
ACCT-2301	271	206	269	145	84	975
ACCT-2302	153	174	205	75	55	662
ACNT-1303	26	13	0	59	0	98
ACNT-1311	0	17	24	23	0	64
ACNT-1313	24	18	0	0	0	42
ACNT-1329	0	0	0	28	0	28
ACNT-1331	0	0	0	37	0	37
ACNT-2303	0	0	0	24	0	24
AERM-1101	0	52	0	0	0	52
AERM-1205	0	45	0	0	0	45
AERM-1208	0	50	0	0	0	50
AERM-1240	0	44	0	0	0	44
AERM-1241	0	40	0	0	0	40
AERM-1243	0	42	0	0	0	42
AERM-1254	0	39	0	0	0	39
AERM-1303	0	64	0	0	0	64
AERM-1310	0	45	0	0	0	45
AERM-1314	0	48	0	0	0	48
AERM-1315	0	59	0	0	0	59
AERM-1344	0	49	0	0	0	49
AERM-1345	0	47	0	0	0	47
AERM-1347	0	44	0	0	0	44
AERM-1349	0	43	0	0	0	43
AERM-1350	0	49	0	0	0	49
AERM-1351	0	47	0	0	0	47
AERM-1357	0	38	0	0	0	38
AERM-1456	0	44	0	0	0	44
AERM-2171	0	44	0	0	0	44
AERM-2172	0	44	0	0	0	44
AERM-2173	0	32	0	0	0	32
AERM-2231	0	29	0	0	0	29
AERM-2252	0	35	0	0	0	35
AERM-2351	0	20	0	0	0	20
AERM-2447	0	38	0	0	0	38
ANTH-2346	36	0	0	0	35	71
ARCE-1342	0	0	6	0	0	6
ARCH-1301	0	0	15	0	0	15
ARCH-1302	0	0	20	0	0	20
ARCH-1304	0	0	17	0	0	17
ARCH-1308	0	0	11	0	0	11
ARCH-1311	0	0	32	0	0	32

Course	Campus					Total
	NE	NW	SE	SO	TR	
ARCH-2301	0	0	19	0	0	19
ARCH-2312	0	0	28	0	0	28
ARCH-2313	0	0	26	0	0	26
ARCT-2367	0	0	5	0	0	5
ARTC-1325	68	0	0	0	0	68
ARTC-1402	37	0	0	0	0	37
ARTC-1413	35	0	0	0	0	35
ARTC-1453	35	0	0	0	0	35
ARTC-2335	7	0	0	0	0	7
ARTC-2405	16	0	0	0	0	16
ARTC-2413	11	0	0	0	0	11
ARTC-2440	15	0	0	0	0	15
ARTS-1301	557	522	608	569	244	2500
ARTS-1303	48	0	29	0	0	77
ARTS-1304	24	8	0	0	0	32
ARTS-1311	86	51	13	19	18	187
ARTS-1312	23	7	9	4	0	43
ARTS-1316	130	58	125	33	37	383
ARTS-1317	19	17	19	3	14	72
ARTS-2313	18	0	13	0	0	31
ARTS-2316	51	50	56	26	0	183
ARTS-2317	16	16	18	5	0	55
ARTS-2323	14	11	0	0	0	25
ARTS-2326	0	7	15	0	0	22
ARTS-2327	5	2	0	0	0	7
ARTS-2333	15	0	0	9	0	24
ARTS-2334	3	0	0	4	0	7
ARTS-2336	0	0	7	0	0	7
ARTS-2341	0	0	15	14	0	29
ARTS-2346	50	58	47	30	0	185
ARTS-2347	31	22	7	4	0	64
ARTS-2348	35	24	13	18	0	90
ARTS-2349	1	11	2	1	0	15
ARTS-2356	171	0	0	0	0	171
ARTS-2357	37	0	0	0	0	37
ARTS-2366	0	12	0	0	0	12
ARTV-1403	20	0	0	0	0	20
AUMT-1241	0	0	0	57	0	57
AUMT-1319	0	0	0	58	0	58
AUMT-1345	0	0	0	57	0	57
AUMT-1381	0	0	0	12	0	12
AUMT-2205	0	0	0	58	0	58
AUMT-2215	0	0	0	43	0	43
AUMT-2231	0	0	0	41	0	41
AUMT-2309	0	0	0	12	0	12
AUMT-2317	0	0	0	43	0	43
AUMT-2323	0	0	0	11	0	11

Course	Campus					Total
	NE	NW	SE	SO	TR	
AUMT-2334	0	0	0	41	0	41
AVNC-1303	0	13	0	0	0	13
BCIS-1405	948	572	601	434	303	2858
BIOL-1406	207	24	118	69	85	503
BIOL-1407	74	59	85	45	26	289
BIOL-1408	697	188	231	276	0	1392
BIOL-1409	355	142	221	210	46	974
BIOL-2306	46	0	0	49	0	95
BIOL-2316	14	30	30	25	0	99
BIOL-2401	711	274	291	557	106	1939
BIOL-2402	363	225	479	235	112	1414
BIOL-2420	258	136	313	178	69	954
BIOL-2421	15	0	24	0	0	39
BMGT-1268	0	15	0	0	0	15
BMGT-1270	0	15	0	0	0	15
BMGT-1301	47	19	30	0	0	96
BMGT-1305	26	35	19	13	0	93
BMGT-1327	84	69	74	111	0	338
BMGT-1341	28	0	12	22	0	62
BMGT-1382	5	0	0	0	0	5
BMGT-1409	0	23	0	0	0	23
BMGT-2172	0	15	0	0	0	15
BMGT-2288	0	15	0	0	0	15
BMGT-2382	2	0	0	0	0	2
BMGT-2473	0	15	0	0	0	15
BMGT-2574	0	15	0	0	0	15
BNKG-1356	0	0	0	15	0	15
BUSG-1302	23	0	0	0	0	23
BUSG-1315	0	100	0	0	0	100
BUSG-1341	0	73	0	0	0	73
BUSG-2170	14	10	7	0	0	31
BUSG-2300	21	25	28	25	0	99
BUSG-2309	0	94	0	0	0	94
BUSI-1301	256	144	172	104	70	746
BUSI-2301	78	127	71	30	0	306
CDEC-1321	82	0	0	0	0	82
CDEC-1356	53	0	0	0	0	53
CDEC-1358	25	0	0	0	0	25
CDEC-1359	77	0	0	0	0	77
CDEC-1419	24	0	0	0	0	24
CDEC-2322	9	0	0	0	0	9
CDEC-2324	5	0	0	0	0	5
CDEC-2328	41	0	0	0	0	41
CDEC-2341	26	0	0	0	0	26
CDEC-2386	10	0	0	0	0	10
CETT-1409	0	0	0	40	0	40
CETT-1441	0	0	0	31	0	31

Course	Campus					Total
	NE	NW	SE	SO	TR	
CETT-1445	0	0	0	45	0	45
CETT-1449	0	0	0	24	0	24
CETT-2449	0	0	0	4	0	4
CHEF-1205	0	0	55	0	0	55
CHEF-1264	0	0	15	0	0	15
CHEF-1301	0	0	57	0	0	57
CHEF-1345	0	0	19	0	0	19
CHEF-2301	0	0	33	0	0	33
CHEM-1405	76	46	0	23	0	145
CHEM-1406	248	263	334	242	107	1194
CHEM-1407	19	0	0	23	0	42
CHEM-1411	211	73	269	46	69	668
CHEM-1412	147	64	133	43	42	429
CHEM-2423	36	0	0	0	0	36
CHEM-2425	34	22	37	7	0	100
CJLE-1111	0	15	0	0	0	15
CJLE-1345	0	25	0	0	0	25
CJLE-1394	0	90	0	0	0	90
CJLE-1506	0	15	0	0	0	15
CJLE-1512	0	15	0	0	0	15
CJLE-1518	0	15	0	0	0	15
CJLE-2247	0	15	0	0	0	15
CJSA-2334	0	10	0	0	0	10
CJSA-2388	0	8	0	0	0	8
CNBT-1300	0	0	14	0	0	14
CNBT-1311	0	0	35	0	0	35
CNBT-1342	0	0	14	0	0	14
CNBT-1372	0	0	25	0	0	25
CNBT-2266	0	0	11	0	0	11
CNBT-2317	0	0	19	0	0	19
CNBT-2337	0	0	20	0	0	20
CNBT-2344	0	0	22	0	0	22
COMM-1307	112	29	30	0	18	189
COMM-1316	2	0	0	0	0	2
COMM-1335	24	0	0	0	0	24
COMM-2311	30	0	0	0	0	30
COMM-2315	9	0	0	0	0	9
COMM-2332	17	0	0	0	0	17
COMM-2339	20	0	0	0	0	20
COMM-2366	24	0	0	0	0	24
COSC-1401	476	501	658	426	211	2272
COSC-1420	0	24	0	0	0	24
COSC-1436	101	96	88	23	0	308
COSC-1437	20	19	9	13	0	61
CPMT-1405	15	0	0	0	0	15
CPMT-1445	0	0	0	23	0	23
CPMT-1491	0	0	0	18	0	18

Course	Campus					Total
	NE	NW	SE	SO	TR	
CRIJ-1301	0	158	0	0	0	158
CRIJ-1306	56	79	0	0	0	135
CRIJ-1307	0	64	0	0	0	64
CRIJ-1310	0	80	0	0	0	80
CRIJ-1313	0	1	0	0	0	1
CRIJ-2313	0	65	0	0	0	65
CRIJ-2314	0	78	0	0	0	78
CRIJ-2323	0	58	0	0	0	58
CRIJ-2328	0	48	0	0	0	48
CSIR-1459	0	0	0	14	0	14
DAAC-1304	35	0	0	0	0	35
DAAC-2166	1	0	0	0	0	1
DAAC-2266	11	0	0	0	0	11
DAAC-2307	34	0	0	0	0	34
DAAC-2341	30	0	0	0	0	30
DAAC-2343	13	0	0	0	0	13
DANC-1112	2	0	0	0	0	2
DANC-1113	3	11	0	0	0	14
DANC-1128	16	10	0	0	0	26
DANC-1129	6	7	0	0	0	13
DANC-1141	18	0	0	0	0	18
DANC-1142	12	8	0	0	0	20
DANC-1145	18	0	0	0	0	18
DANC-1146	12	14	0	0	0	26
DANC-1147	16	17	0	0	0	33
DANC-1148	2	9	0	0	0	11
DANC-1151	28	0	15	0	0	43
DANC-1152	8	20	0	21	0	49
DANC-1210	0	0	15	0	0	15
DANC-1301	4	0	0	0	0	4
DANC-1341	20	27	13	16	0	76
DANC-1342	12	7	2	4	0	25
DANC-1345	47	28	41	58	0	174
DANC-1346	13	6	4	12	0	35
DANC-1347	13	14	33	41	0	101
DANC-1348	9	6	23	13	0	51
DANC-2112	6	1	0	0	0	7
DANC-2142	0	10	0	0	0	10
DANC-2146	0	6	0	0	0	6
DANC-2151	3	0	0	0	0	3
DANC-2152	3	13	0	0	0	16
DANC-2303	98	99	28	73	0	298
DANC-2325	0	9	0	0	0	9
DFTG-1405	0	0	0	27	0	27
DFTG-1409	0	0	0	33	0	33
DFTG-1425	0	0	0	34	0	34
DFTG-1458	0	0	0	15	0	15

Course	Campus					Total
	NE	NW	SE	SO	TR	
DFTG-1491	0	0	0	41	0	41
DFTG-2402	0	0	0	13	0	13
DFTG-2419	0	0	0	12	0	12
DFTG-2423	0	0	0	12	0	12
DFTG-2428	0	0	0	17	0	17
DFTG-2438	0	0	0	7	0	7
DFTG-2440	0	0	0	19	0	19
DFTG-2447	0	0	0	8	0	8
DHYG-1191	22	0	0	0	0	22
DHYG-1223	22	0	0	0	0	22
DHYG-1260	23	0	0	0	0	23
DHYG-1304	23	0	0	0	0	23
DHYG-1319	23	0	0	0	0	23
DHYG-2301	23	0	0	0	0	23
DHYG-2361	22	0	0	0	0	22
DRAM-1120	19	22	16	11	0	68
DRAM-1121	6	5	14	6	0	31
DRAM-1161	13	0	0	0	0	13
DRAM-1310	131	174	128	26	25	484
DRAM-1320	11	0	24	0	0	35
DRAM-1330	0	4	0	0	0	4
DRAM-1351	39	21	36	30	0	126
DRAM-1352	13	5	18	5	0	41
DRAM-2120	3	6	0	11	0	20
DRAM-2121	2	0	0	0	0	2
DRAM-2331	0	1	0	0	0	1
DRAM-2351	0	2	2	0	0	4
DRAM-2366	119	41	98	154	0	412
ECON-2301	386	366	880	348	196	2176
ECON-2302	160	216	252	225	22	875
EDTC-1313	21	0	0	0	0	21
EDUC-1301	100	0	0	89	0	189
EDUC-2301	75	0	0	67	0	142
EECT-2435	0	0	0	6	0	6
ELPT-2455	0	0	0	7	0	7
EMSP-1160	97	0	0	0	0	97
EMSP-1355	4	0	0	0	0	4
EMSP-1356	16	0	0	0	0	16
EMSP-1438	16	0	0	0	0	16
EMSP-1501	97	0	0	0	0	97
EMSP-2160	16	0	0	0	0	16
EMSP-2161	4	0	0	0	0	4
EMSP-2444	4	0	0	0	0	4
ENGL-0324	292	329	358	350	211	1540
ENGL-0325	149	164	310	102	81	806
ENGL-1301	1310	1027	1489	986	648	5460
ENGL-1302	1260	1324	1901	973	623	6081

Course	Campus					Total
	NE	NW	SE	SO	TR	
ENGL-2307	22	80	54	45	37	238
ENGL-2308	0	33	26	0	0	59
ENGL-2311	0	205	87	20	39	351
ENGL-2322	424	258	70	86	0	838
ENGL-2323	285	266	52	23	0	626
ENGL-2327	207	22	89	20	27	365
ENGL-2328	104	170	130	176	27	607
ENGL-2332	107	27	88	38	22	282
ENGL-2333	106	65	112	0	16	299
ENGL-2342	0	0	0	69	0	69
ENGL-2389	0	13	0	0	0	13
ENGR-1201	0	0	68	33	0	101
ENGR-1304	0	0	76	0	0	76
ENGR-1307	0	0	3	0	0	3
ENGR-2301	0	0	31	13	0	44
ENGR-2302	0	0	19	15	0	34
ENGR-2305	0	0	25	11	0	36
ENGR-2432	0	0	0	5	0	5
EPCT-1307	0	11	0	0	0	11
EPCT-1311	0	11	0	0	0	11
EPCT-1341	0	15	0	0	0	15
EPCT-1344	0	8	0	0	0	8
EPCT-1401	0	5	0	0	0	5
EPCT-2333	0	11	0	0	0	11
ESOL-0301	0	2	12	0	0	14
ESOL-0302	14	0	8	0	0	22
ESOL-0304	17	0	15	0	0	32
ESOL-0305	0	0	6	0	0	6
ESOL-0307	0	4	17	0	0	21
ESOL-0308	0	2	0	0	0	2
ESOL-0310	0	1	11	0	0	12
ESOL-0311	0	2	0	0	0	2
FDNS-1164	0	0	7	0	0	7
FDNS-1307	0	0	18	0	0	18
FDNS-1341	0	0	39	0	0	39
FDNS-1345	0	0	27	0	0	27
FDNS-1447	0	0	8	0	0	8
FDNS-2165	0	0	6	0	0	6
FDNS-2400	0	0	26	0	0	26
FIRS-1301	0	24	0	0	0	24
FIRS-1313	0	24	0	0	0	24
FIRS-1319	0	24	0	0	0	24
FIRS-1323	0	24	0	0	0	24
FIRS-1329	0	24	0	0	0	24
FIRT-1301	0	28	0	0	0	28
FIRT-1305	0	6	0	0	0	6
FIRT-1309	0	20	0	0	0	20

Course	Campus					Total
	NE	NW	SE	SO	TR	
FIRT-1311	0	25	0	0	0	25
FIRT-1315	0	7	0	0	0	7
FIRT-1329	0	28	0	0	0	28
FIRT-1338	0	44	0	0	0	44
FIRT-1391	0	15	0	0	0	15
FIRT-2331	0	11	0	0	0	11
FIRT-2388	0	2	0	0	0	2
FITT-2313	0	22	0	0	0	22
FLMC-1311	18	0	0	0	0	18
FLMC-1404	23	0	0	0	0	23
FREN-1100	25	0	0	7	0	32
FREN-1110	2	0	0	0	0	2
FREN-1411	51	0	0	41	0	92
FREN-1412	28	0	21	43	0	92
FREN-2311	0	0	12	0	0	12
FREN-2312	23	0	0	0	0	23
FSHN-2305	26	0	0	0	0	26
GAME-1304	0	0	0	16	0	16
GAME-1403	0	22	0	15	0	37
GAME-1406	0	0	0	13	0	13
GEOG-1301	49	48	30	17	0	144
GEOG-1302	0	35	0	0	0	35
GEOG-1303	92	138	40	35	0	305
GEOL-1305	0	47	0	0	0	47
GEOL-1401	22	166	0	0	0	188
GEOL-1403	283	24	257	216	96	876
GEOL-1404	142	59	149	81	58	489
GEOL-1405	0	25	23	0	0	48
GEOL-1445	0	22	0	0	0	22
GERM-1411	52	0	0	0	0	52
GERM-1412	24	0	0	0	0	24
GERM-2312	10	0	0	0	0	10
GISC-1402	0	0	15	0	0	15
GISC-2264	0	0	2	0	0	2
GISC-2401	0	0	12	0	0	12
GISC-2420	0	0	12	0	0	12
GOVT-2305	1022	825	1395	1004	387	4633
GOVT-2306	1075	615	1050	975	355	4070
HALT-1301	0	29	0	0	0	29
HALT-1303	0	16	0	0	0	16
HALT-1311	0	25	0	0	0	25
HALT-1422	0	13	0	0	0	13
HALT-2314	0	12	0	0	0	12
HAMG-1213	0	0	28	0	0	28
HAMG-1321	0	0	18	0	0	18
HAMG-1324	0	0	59	0	0	59
HAMG-1340	0	0	23	0	0	23

Course	Campus					Total
	NE	NW	SE	SO	TR	
HAMG-2167	0	0	12	0	0	12
HAMG-2301	0	0	30	0	0	30
HAMG-2305	0	0	18	0	0	18
HART-1401	0	0	0	93	0	93
HART-1403	0	0	0	31	0	31
HART-1407	0	0	0	78	0	78
HART-1445	0	0	0	47	0	47
HART-2431	0	0	0	59	0	59
HART-2436	0	0	0	22	0	22
HART-2438	0	0	0	51	0	51
HART-2442	0	0	0	32	0	32
HART-2445	0	0	0	48	0	48
HART-2449	0	0	0	21	0	21
HECO-1307	170	0	0	0	0	170
HECO-1315	0	0	38	0	0	38
HECO-1320	17	0	0	0	0	17
HECO-1322	116	30	336	58	0	540
HIST-1301	1010	805	1080	927	541	4363
HIST-1302	1152	941	1737	1037	533	5400
HIST-2301	42	35	88	58	32	255
HIST-2312	0	0	74	53	0	127
HIST-2322	27	98	21	0	16	162
HITT-1441	12	0	0	0	0	12
HITT-1442	12	0	0	0	0	12
HITT-2261	7	0	0	0	0	7
HITT-2331	10	0	0	0	0	10
HPRS-1206	250	0	0	0	0	250
HPRS-2200	175	0	0	0	0	175
HPRS-2201	143	0	0	0	0	143
HRPO-1311	15	25	25	27	0	92
HRPO-2301	11	0	38	47	0	96
HUMA-1301	0	312	47	0	18	377
HUMA-1315	0	42	30	17	0	89
IFWA-2446	0	0	30	0	0	30
IMED-1416	17	0	0	0	0	17
IMED-2415	18	0	0	0	0	18
INEW-2434	20	0	0	0	0	20
ITCC-1401	62	0	16	22	0	100
ITCC-1404	57	0	9	16	0	82
ITCC-2408	27	0	0	0	0	27
ITCC-2410	22	0	0	0	0	22
ITCC-2440	11	0	0	0	0	11
ITNW-1408	30	0	0	14	0	44
ITNW-1425	18	44	0	13	0	75
ITNW-1451	10	15	0	0	0	25
ITNW-1454	21	0	8	17	0	46
ITNW-1471	25	0	0	0	0	25

Course	Campus					Total
	NE	NW	SE	SO	TR	
ITNW-1492	15	0	0	0	0	15
ITSC-1405	69	17	43	15	0	144
ITSC-1407	42	25	0	0	0	67
ITSC-1425	64	20	16	10	0	110
ITSC-1491	16	0	0	0	0	16
ITSE-1411	12	0	14	49	0	75
ITSE-1430	17	0	0	0	0	17
ITSE-1450	0	0	24	0	0	24
ITSE-2402	31	0	0	0	0	31
ITSE-2405	0	0	5	0	0	5
ITSE-2417	0	0	23	0	0	23
ITSW-1407	28	23	36	53	0	140
ITSW-1410	0	6	0	42	0	48
ITSY-1400	65	12	21	11	0	109
ITSY-2400	0	0	0	14	0	14
ITSY-2401	0	0	0	10	0	10
ITSY-2443	20	0	0	0	0	20
ITSY-2459	23	0	0	0	0	23
LGLA-1303	60	0	0	0	17	77
LGLA-1305	59	0	0	0	0	59
LGLA-1307	69	0	0	0	22	91
LGLA-1345	52	0	0	0	0	52
LGLA-1355	73	0	0	0	0	73
LGLA-2281	1	0	0	0	0	1
LGLA-2288	2	0	0	0	0	2
LGLA-2311	29	0	0	0	0	29
LGLA-2380	28	0	0	0	0	28
LTCA-1311	28	0	0	0	0	28
LTCA-1312	22	0	0	0	0	22
LTCA-1313	13	0	0	0	0	13
LTCA-2314	11	0	0	0	0	11
LTCA-2315	12	0	0	0	0	12
LTCA-2660	4	0	0	0	0	4
LTCA-2661	2	0	0	0	0	2
MAIR-1449	0	0	0	49	0	49
MATH-0101	53	0	0	35	184	272
MATH-0102	78	0	0	42	202	322
MATH-0103	85	0	0	38	220	343
MATH-0104	82	0	0	42	237	361
MATH-0105	69	0	0	43	237	349
MATH-0106	62	0	0	36	248	346
MATH-0107	50	0	0	27	193	270
MATH-0108	46	0	0	18	205	269
MATH-0109	41	2	0	18	192	253
MATH-0302	676	693	841	478	248	2936
MATH-0304	789	755	887	615	171	3217
MATH-0350	966	1072	1373	754	110	4275

Course	Campus					Total
	NE	NW	SE	SO	TR	
MATH-1314	709	594	830	533	254	2920
MATH-1316	195	104	211	76	44	630
MATH-1324	90	38	53	41	25	247
MATH-1325	100	77	111	65	0	353
MATH-1332	27	23	0	18	0	68
MATH-1342	203	179	250	164	66	862
MATH-1350	16	62	33	0	0	111
MATH-1351	18	51	31	53	0	153
MATH-2315	17	13	32	25	0	87
MATH-2318	15	0	0	0	0	15
MATH-2412	59	44	87	60	21	271
MATH-2414	44	44	88	23	0	199
MATH-2421	14	0	0	0	0	14
MATH-2513	73	34	93	73	0	273
MILI-0081	0	0	4	8	0	12
MILI-1001	0	0	7	10	0	17
MILI-2004	0	0	3	3	0	6
MRKG-1302	0	46	0	0	0	46
MRKG-1311	42	46	53	126	21	288
MRKG-2333	0	48	25	26	0	99
MRKG-2348	0	50	0	0	0	50
MRKG-2349	0	43	0	0	0	43
MTRC-1405	0	0	0	13	0	13
MUAP-1190	44	31	14	34	0	123
MUAP-1191	0	11	0	8	0	19
MUAP-1290	42	29	35	41	0	147
MUAP-1291	5	22	5	11	0	43
MUAP-1292	8	0	6	0	0	14
MUAP-2291	2	0	0	0	0	2
MUAP-2292	4	0	5	0	0	9
MUEN-1121	0	0	0	21	0	21
MUEN-1122	18	0	20	11	0	49
MUEN-1133	34	0	24	0	0	58
MUEN-1141	44	0	23	0	0	67
MUEN-1142	0	16	0	0	0	16
MUSI-1163	14	11	12	0	0	37
MUSI-1164	7	0	0	0	0	7
MUSI-1181	59	9	42	24	0	134
MUSI-1182	14	0	5	6	0	25
MUSI-1183	0	0	0	11	0	11
MUSI-1192	15	12	21	14	0	62
MUSI-1212	13	7	0	14	0	34
MUSI-1217	9	9	0	13	0	31
MUSI-1301	144	13	43	52	0	252
MUSI-1306	648	201	282	161	139	1431
MUSI-1308	17	42	0	0	0	59
MUSI-1390	16	13	15	14	0	58

Course	Campus					Total
	NE	NW	SE	SO	TR	
MUSI-1391	9	0	0	6	0	15
MUSI-2212	8	4	0	7	0	19
MUSI-2217	7	4	0	7	0	18
OSHT-2401	0	10	0	0	0	10
PBAD-1370	0	24	0	0	0	24
PBAD-1391	0	24	0	0	0	24
PBAD-2345	0	14	0	0	0	14
PHED-1101	0	0	26	0	0	26
PHED-1102	42	28	43	42	15	170
PHED-1104	17	19	29	20	0	85
PHED-1105	0	14	0	0	0	14
PHED-1106	0	0	0	18	0	18
PHED-1107	50	0	35	0	12	97
PHED-1109	0	0	0	14	0	14
PHED-1110	0	0	0	0	12	12
PHED-1111	14	8	19	0	0	41
PHED-1112	0	0	0	15	0	15
PHED-1113	66	104	24	50	20	264
PHED-1115	16	0	0	10	0	26
PHED-1116	0	22	34	0	0	56
PHED-1120	0	0	25	0	0	25
PHED-1121	9	7	0	0	0	16
PHED-1122	21	9	10	10	0	50
PHED-1125	10	5	9	15	0	39
PHED-1128	0	10	0	13	0	23
PHED-1129	12	20	20	0	0	52
PHED-1130	0	0	0	32	0	32
PHED-1131	0	0	0	15	0	15
PHED-1132	0	4	0	0	0	4
PHED-1133	76	69	101	62	0	308
PHED-1134	75	83	77	92	15	342
PHED-1136	0	2	0	0	0	2
PHED-1140	0	3	0	0	0	3
PHED-1141	0	1	0	0	0	1
PHED-1142	0	3	0	0	0	3
PHED-1143	0	2	0	0	0	2
PHED-1144	0	4	0	0	0	4
PHED-1148	65	28	50	35	14	192
PHED-1164	809	768	937	485	321	3320
PHED-1252	20	0	0	0	0	20
PHED-1304	0	0	0	0	25	25
PHED-1306	28	20	20	30	0	98
PHED-1338	22	69	27	21	0	139
PHED-2101	0	0	2	0	0	2
PHED-2102	3	3	5	5	2	18
PHED-2104	3	11	10	4	0	28
PHED-2106	0	0	0	3	0	3

Course	Campus					Total
	NE	NW	SE	SO	TR	
PHED-2107	15	0	8	0	9	32
PHED-2110	0	0	0	0	3	3
PHED-2111	2	7	2	0	0	11
PHED-2112	0	0	0	2	0	2
PHED-2113	7	18	2	5	5	37
PHED-2115	3	0	0	3	0	6
PHED-2116	0	4	15	0	0	19
PHED-2120	0	0	2	0	0	2
PHED-2121	3	3	0	0	0	6
PHED-2122	15	3	4	3	0	25
PHED-2123	0	0	3	0	0	3
PHED-2125	6	4	8	8	0	26
PHED-2128	0	6	0	12	0	18
PHED-2129	1	5	1	0	0	7
PHED-2130	0	0	0	3	0	3
PHED-2131	0	0	0	2	0	2
PHED-2132	0	4	0	0	0	4
PHED-2133	22	22	33	20	0	97
PHED-2134	16	30	18	15	10	89
PHED-2137	0	5	0	0	0	5
PHED-2144	0	1	0	0	0	1
PHED-2146	0	2	0	0	0	2
PHED-2148	19	2	10	13	2	46
PHIL-1301	510	521	266	299	163	1759
PHIL-1304	41	219	38	117	0	415
PHIL-1317	19	0	0	19	0	38
PHIL-2303	39	27	31	48	0	145
PHIL-2306	41	98	102	175	59	475
PHIL-2316	0	21	0	0	0	21
PHTC-1300	28	0	0	0	0	28
PHTC-1353	17	0	0	0	0	17
PHTC-2331	15	0	0	0	0	15
PHTC-2349	13	0	0	0	0	13
PHYS-1401	88	21	83	54	23	269
PHYS-1402	44	20	40	17	0	121
PHYS-1403	55	18	0	29	0	102
PHYS-1404	43	0	26	0	0	69
PHYS-1415	41	16	0	8	0	65
PHYS-2425	49	0	59	0	0	108
PHYS-2426	15	11	30	13	0	69
POFI-1449	0	79	0	45	0	124
POFI-2401	26	41	0	32	0	99
POFI-2431	0	38	0	19	0	57
POFT-1127	72	0	19	19	0	110
POFT-1309	25	0	44	0	0	69
POFT-1319	0	49	0	0	0	49
POFT-1321	0	0	25	71	0	96

Course	Campus					Total
	NE	NW	SE	SO	TR	
POFT-1329	8	0	7	70	0	85
POFT-1331	49	0	0	0	0	49
POFT-2301	2	55	7	2	0	66
POFT-2312	60	0	12	6	0	78
PSTR-1401	0	0	18	0	0	18
PSYC-1300	0	0	27	0	0	27
PSYC-2301	1239	770	1253	617	336	4215
PSYC-2302	12	0	48	33	0	93
PSYC-2306	38	84	0	25	30	177
PSYC-2308	77	167	37	32	0	313
PSYC-2314	251	186	348	162	112	1059
PSYC-2315	143	0	27	128	0	298
PSYC-2316	0	39	0	19	0	58
PSYC-2319	0	0	66	0	0	66
PSYT-2165	1	0	0	0	0	1
PSYT-2301	37	0	0	0	0	37
PSYT-2321	32	0	0	0	0	32
PSYT-2331	33	0	0	0	0	33
PSYT-2339	36	0	0	0	0	36
PSYT-2345	34	0	0	0	0	34
PTHA-1405	24	0	0	0	0	24
PTHA-1413	24	0	0	0	0	24
PTHA-2239	16	0	0	0	0	16
PTHA-2363	16	0	0	0	0	16
PTHA-2435	16	0	0	0	0	16
PTRT-1313	0	0	0	3	0	3
RADR-1267	25	0	0	0	0	25
RADR-2213	27	0	0	0	0	27
RADR-2217	27	0	0	0	0	27
RADR-2235	27	0	0	0	0	27
RADR-2305	27	0	0	0	0	27
RADR-2331	27	0	0	0	0	27
RADR-2367	27	0	0	0	0	27
RBTC-1351	0	0	0	9	0	9
RBTC-1401	0	0	0	25	0	25
RBTC-2445	0	0	0	5	0	5
RDNG-0361	255	362	612	463	254	1946
RDNG-0363	59	129	166	141	76	571
RELE-1301	97	0	0	0	0	97
RELE-1307	30	0	0	0	0	30
RELE-1311	66	0	0	0	0	66
RELE-1325	20	0	0	0	0	20
RELE-2301	39	0	0	0	0	39
RNSG-1105	0	0	0	136	0	136
RNSG-1193	0	0	0	127	0	127
RNSG-1360	0	0	0	140	0	140
RNSG-1441	0	0	0	126	0	126

Course	Campus					Total
	NE	NW	SE	SO	TR	
RNSG-1443	0	0	0	92	0	92
RNSG-1461	0	0	0	126	0	126
RNSG-1513	0	0	0	141	0	141
RNSG-2201	0	0	0	139	0	139
RNSG-2208	0	0	0	142	0	142
RNSG-2260	0	0	0	142	0	142
RNSG-2261	0	0	0	139	0	139
RNSG-2461	0	0	0	92	0	92
RSPT-1141	24	0	0	0	0	24
RSPT-1207	22	0	0	0	0	22
RSPT-1266	23	0	0	0	0	23
RSPT-1331	23	0	0	0	0	23
RSPT-2131	24	0	0	0	0	24
RSPT-2133	24	0	0	0	0	24
RSPT-2147	24	0	0	0	0	24
RSPT-2267	24	0	0	0	0	24
RSPT-2353	24	0	0	0	0	24
RSTO-1204	0	0	40	0	0	40
RSTO-1325	0	0	25	0	0	25
RTVB-1355	18	0	0	0	0	18
RTVB-1402	21	0	0	0	0	21
RTVB-1409	29	0	0	0	0	29
RTVB-1421	29	0	0	0	0	29
RTVB-1425	22	0	0	0	0	22
RTVB-1447	21	0	0	0	0	21
RTVB-2347	29	0	0	0	0	29
RTVB-2430	19	0	0	0	0	19
RTVB-2487	9	0	0	0	0	9
SCWK-2305	29	0	0	0	0	29
SLNG-1211	0	0	0	0	50	50
SLNG-1321	0	0	0	0	60	60
SLNG-1404	0	0	0	0	37	37
SLNG-1405	0	0	0	0	77	77
SLNG-1445	0	0	0	0	53	53
SLNG-2167	0	0	0	0	21	21
SLNG-2303	0	0	0	0	22	22
SLNG-2431	0	0	0	0	24	24
SMER-1425	0	0	0	12	0	12
SMER-1428	0	0	0	9	0	9
SMER-2450	0	0	0	10	0	10
SOCI-1301	842	519	788	305	279	2733
SOCI-1306	60	0	66	0	77	203
SOCI-2301	53	0	68	24	0	145
SOCI-2326	0	0	27	0	0	27
SOCI-2336	0	0	42	0	0	42
SOCW-2361	61	19	39	0	0	119
SPAN-1100	42	58	0	0	0	100

Course	Campus					Total
	NE	NW	SE	SO	TR	
SPAN-1110	36	0	0	0	0	36
SPAN-1411	277	220	187	188	66	938
SPAN-1412	137	92	143	89	57	518
SPAN-2106	28	0	0	0	0	28
SPAN-2311	51	56	76	48	21	252
SPAN-2312	66	34	77	0	21	198
SPCH-1144	14	0	0	0	2	16
SPCH-1145	3	0	0	0	1	4
SPCH-1311	1360	861	1123	702	476	4522
SPCH-1315	173	48	70	0	62	353
SPCH-1318	28	166	87	48	26	355
SPCH-1321	226	189	399	199	130	1143
SPCH-2144	1	0	0	0	0	1
SPCH-2145	2	0	0	0	0	2
SPCH-2333	0	0	0	50	0	50
SRGT-1267	24	0	0	0	0	24
SRGT-1441	24	0	0	0	0	24
SRGT-1442	24	0	0	0	0	24
SRVY-1301	0	0	9	0	0	9
STSC-0111	330	285	390	470	245	1720
TECA-1303	37	0	0	25	0	62
TECA-1311	48	0	0	14	0	62
TECA-1318	50	0	0	0	0	50
TECA-1354	80	0	0	44	0	124
TRVM-1201	0	0	19	0	0	19
TRVM-1327	0	0	22	0	0	22
TRVM-2355	0	0	30	0	0	30
WLDG-1412	0	0	0	31	0	31
WLDG-1428	0	0	0	28	0	28
WLDG-1430	0	0	0	28	0	28
WLDG-1434	0	0	0	29	0	29
WLDG-1435	0	0	0	14	0	14
WLDG-2451	0	0	0	15	0	15
WLDG-2453	0	0	0	12	0	12
TOTAL	37894	28496	34462	26638	12142	139632

Section V

IPEDS Race &

Ethnicity Data

Section V contains ethnicity data of a format similar to previous Statistical Handbooks. For Tables 14 through 19, the race Hispanic was defined as anyone with Ethnicity equal to Hispanic/Latino. Tables 3 through 8 in Section II contain the raw data for the new categories of race and ethnicity. These changes in race and ethnicity are due to Federal reporting requirements. The data in this section may not be the correct categories for all applications (e.g. grant proposals).

LIMITATIONS OF STATISTICAL HANDBOOK DATA

Section V contains data on TCCD credit students for Spring 2011 (does not include Continuing Education students). This section is based on data from the Datatel/Colleague system. Minor differences are to be expected between Datatel/Colleague reports that are run at different times; thus this data may vary slightly from other Datatel/Colleague reports.

Minor differences are to be expected between the data in this section and the certified state reports.

Table 14. 2011SP Race/Ethnicity by Gender TCCD District

This page contains ethnicity data of a format similar to previous Statistical Handbooks. For this table, the race Hispanic was defined as anyone with Ethnicity equal to Hispanic/Latino. The data in this table may not be the correct categories for all applications (e.g. grant proposals).

		Gender		Total
		Female	Male	
(Blank)	Count	30	21	51
	% within Race	58.8%	41.2%	100.0%
	% within Gender	.1%	.1%	.1%
American/Alaska Native	Count	141	107	248
	% within Race	56.9%	43.1%	100.0%
	% within Gender	.5%	.5%	.5%
Asian	Count	1580	1340	2920
	% within Race	54.1%	45.9%	100.0%
	% within Gender	5.6%	6.7%	6.0%
Black or African American	Count	5741	3054	8795
	% within Race	65.3%	34.7%	100.0%
	% within Gender	20.2%	15.3%	18.2%
Hawaiian/Pacific Islander	Count	30	26	56
	% within Race	53.6%	46.4%	100.0%
	% within Gender	.1%	.1%	.1%
Hispanic/Latino	Count	6290	4337	10627
	% within Race	59.2%	40.8%	100.0%
	% within Gender	22.1%	21.8%	22.0%
International	Count	235	170	405
	% within Race	58.0%	42.0%	100.0%
	% within Gender	.8%	.9%	.8%
Multi	Count	65	53	118
	% within Race	55.1%	44.9%	100.0%
	% within Gender	.2%	.3%	.2%
Race Unknown	Count	186	161	347
	% within Race	53.6%	46.4%	100.0%
	% within Gender	.7%	.8%	.7%
White	Count	14157	10652	24809
	% within Race	57.1%	42.9%	100.0%
	% within Gender	49.8%	53.5%	51.3%
Total	Count	28455	19921	48376
	% within Race	58.8%	41.2%	100.0%
	% within Gender	100.0%	100.0%	100.0%

Table 15. 2011SP Race/Ethnicity by Gender SO Campus

This page contains ethnicity data of a format similar to previous Statistical Handbooks. For this table, the race Hispanic was defined as anyone with Ethnicity equal to Hispanic/Latino. The data in this table may not be the correct categories for all applications (e.g. grant proposals).

		Gender		Total
		Female	Male	
(Blank)	Count	12	7	19
	% within Race	63.2%	36.8%	100.0%
	% within Gender	.2%	.1%	.2%
American/Alaska Native	Count	42	25	67
	% within Race	62.7%	37.3%	100.0%
	% within Gender	.6%	.5%	.5%
Asian	Count	283	232	515
	% within Race	55.0%	45.0%	100.0%
	% within Gender	3.7%	4.8%	4.1%
Black or African American	Count	2118	971	3089
	% within Race	68.6%	31.4%	100.0%
	% within Gender	27.9%	20.1%	24.9%
Hawaiian/Pacific Islander	Count	8	2	10
	% within Race	80.0%	20.0%	100.0%
	% within Gender	.1%	.0%	.1%
Hispanic/Latino	Count	1619	1081	2700
	% within Race	60.0%	40.0%	100.0%
	% within Gender	21.3%	22.4%	21.7%
International	Count	59	43	102
	% within Race	57.8%	42.2%	100.0%
	% within Gender	.8%	.9%	.8%
Multi	Count	14	7	21
	% within Race	66.7%	33.3%	100.0%
	% within Gender	.2%	.1%	.2%
Race Unknown	Count	61	34	95
	% within Race	64.2%	35.8%	100.0%
	% within Gender	.8%	.7%	.8%
White	Count	3389	2421	5810
	% within Race	58.3%	41.7%	100.0%
	% within Gender	44.6%	50.2%	46.7%
Total	Count	7605	4823	12428
	% within Race	61.2%	38.8%	100.0%
	% within Gender	100.0%	100.0%	100.0%

Table 16. 2011SP Race/Ethnicity by Gender NE Campus

This page contains ethnicity data of a format similar to previous Statistical Handbooks. For this table, the race Hispanic was defined as anyone with Ethnicity equal to Hispanic/Latino. The data in this table may not be the correct categories for all applications (e.g. grant proposals).

		Gender		Total
		Female	Male	
(Blank)	Count	11	3	14
	% within Race	78.6%	21.4%	100.0%
	% within Gender	.1%	.0%	.1%
American/Alaska Native	Count	58	32	90
	% within Race	64.4%	35.6%	100.0%
	% within Gender	.6%	.5%	.5%
Asian	Count	572	427	999
	% within Race	57.3%	42.7%	100.0%
	% within Gender	5.6%	6.5%	6.0%
Black or African American	Count	1726	772	2498
	% within Race	69.1%	30.9%	100.0%
	% within Gender	17.0%	11.7%	14.9%
Hawaiian/Pacific Islander	Count	14	16	30
	% within Race	46.7%	53.3%	100.0%
	% within Gender	.1%	.2%	.2%
Hispanic/Latino	Count	1630	999	2629
	% within Race	62.0%	38.0%	100.0%
	% within Gender	16.1%	15.1%	15.7%
International	Count	80	51	131
	% within Race	61.1%	38.9%	100.0%
	% within Gender	.8%	.8%	.8%
Multi	Count	17	16	33
	% within Race	51.5%	48.5%	100.0%
	% within Gender	.2%	.2%	.2%
Race Unknown	Count	62	69	131
	% within Race	47.3%	52.7%	100.0%
	% within Gender	.6%	1.0%	.8%
White	Count	5975	4212	10187
	% within Race	58.7%	41.3%	100.0%
	% within Gender	58.9%	63.8%	60.8%
Total	Count	10145	6597	16742
	% within Race	60.6%	39.4%	100.0%
	% within Gender	100.0%	100.0%	100.0%

Table 17. 2011SP Race/Ethnicity by Gender NW Campus

This page contains ethnicity data of a format similar to previous Statistical Handbooks. For this table, the race Hispanic was defined as anyone with Ethnicity equal to Hispanic/Latino. The data in this table may not be the correct categories for all applications (e.g. grant proposals).

		Gender		Total
		Female	Male	
(Blank)	Count	4	4	8
	% within Race	50.0%	50.0%	100.0%
	% within Gender	.0%	.1%	.1%
American/Alaska Native	Count	43	31	74
	% within Race	58.1%	41.9%	100.0%
	% within Gender	.5%	.6%	.6%
Asian	Count	320	262	582
	% within Race	55.0%	45.0%	100.0%
	% within Gender	3.9%	4.9%	4.3%
Black or African American	Count	1237	532	1769
	% within Race	69.9%	30.1%	100.0%
	% within Gender	15.3%	10.0%	13.2%
Hawaiian/Pacific Islander	Count	6	4	10
	% within Race	60.0%	40.0%	100.0%
	% within Gender	.1%	.1%	.1%
Hispanic/Latino	Count	1850	1236	3086
	% within Race	59.9%	40.1%	100.0%
	% within Gender	22.8%	23.3%	23.0%
International	Count	37	27	64
	% within Race	57.8%	42.2%	100.0%
	% within Gender	.5%	.5%	.5%
Multi	Count	22	19	41
	% within Race	53.7%	46.3%	100.0%
	% within Gender	.3%	.4%	.3%
Race Unknown	Count	56	33	89
	% within Race	62.9%	37.1%	100.0%
	% within Gender	.7%	.6%	.7%
White	Count	4533	3152	7685
	% within Race	59.0%	41.0%	100.0%
	% within Gender	55.9%	59.5%	57.3%
Total	Count	8108	5300	13408
	% within Race	60.5%	39.5%	100.0%
	% within Gender	100.0%	100.0%	100.0%

Table 18. 2011SP Race/Ethnicity by Gender SE Campus

This page contains ethnicity data of a format similar to previous Statistical Handbooks. For this table, the race Hispanic was defined as anyone with Ethnicity equal to Hispanic/Latino. The data in this table may not be the correct categories for all applications (e.g. grant proposals).

		Gender		Total
		Female	Male	
(Blank)	Count	8	11	19
	% within Race	42.1%	57.9%	100.0%
	% within Gender	.1%	.2%	.1%
American/Alaska Native	Count	37	31	68
	% within Race	54.4%	45.6%	100.0%
	% within Gender	.4%	.5%	.4%
Asian	Count	728	635	1363
	% within Race	53.4%	46.6%	100.0%
	% within Gender	8.0%	10.5%	9.0%
Black or African American	Count	2355	1243	3598
	% within Race	65.5%	34.5%	100.0%
	% within Gender	26.0%	20.5%	23.8%
Hawaiian/Pacific Islander	Count	5	6	11
	% within Race	45.5%	54.5%	100.0%
	% within Gender	.1%	.1%	.1%
Hispanic/Latino	Count	1883	1209	3092
	% within Race	60.9%	39.1%	100.0%
	% within Gender	20.8%	19.9%	20.5%
International	Count	107	87	194
	% within Race	55.2%	44.8%	100.0%
	% within Gender	1.2%	1.4%	1.3%
Multi	Count	22	18	40
	% within Race	55.0%	45.0%	100.0%
	% within Gender	.2%	.3%	.3%
Race Unknown	Count	64	51	115
	% within Race	55.7%	44.3%	100.0%
	% within Gender	.7%	.8%	.8%
White	Count	3835	2782	6617
	% within Race	58.0%	42.0%	100.0%
	% within Gender	42.4%	45.8%	43.8%
Total	Count	9044	6073	15117
	% within Race	59.8%	40.2%	100.0%
	% within Gender	100.0%	100.0%	100.0%

Table 19. 2011SP Race/Ethnicity by Gender TR Campus

This page contains ethnicity data of a format similar to previous Statistical Handbooks. For this table, the race Hispanic was defined as anyone with Ethnicity equal to Hispanic/Latino. The data in this table may not be the correct categories for all applications (e.g. grant proposals).

		Gender		Total
		Female	Male	
(Blank)	Count	3	1	4
	% within Race	75.0%	25.0%	100.0%
	% within Gender	.1%	.0%	.1%
American/Alaska Native	Count	13	11	24
	% within Race	54.2%	45.8%	100.0%
	% within Gender	.4%	.5%	.4%
Asian	Count	96	64	160
	% within Race	60.0%	40.0%	100.0%
	% within Gender	2.9%	3.2%	3.0%
Black or African American	Count	702	297	999
	% within Race	70.3%	29.7%	100.0%
	% within Gender	20.9%	14.8%	18.7%
Hawaiian/Pacific Islander	Count	2	2	4
	% within Race	50.0%	50.0%	100.0%
	% within Gender	.1%	.1%	.1%
Hispanic/Latino	Count	1076	698	1774
	% within Race	60.7%	39.3%	100.0%
	% within Gender	32.1%	34.8%	33.1%
International	Count	17	10	27
	% within Race	63.0%	37.0%	100.0%
	% within Gender	.5%	.5%	.5%
Multi	Count	11	6	17
	% within Race	64.7%	35.3%	100.0%
	% within Gender	.3%	.3%	.3%
Race Unknown	Count	22	26	48
	% within Race	45.8%	54.2%	100.0%
	% within Gender	.7%	1.3%	.9%
White	Count	1410	888	2298
	% within Race	61.4%	38.6%	100.0%
	% within Gender	42.1%	44.3%	42.9%
Total	Count	3352	2003	5355
	% within Race	62.6%	37.4%	100.0%
	% within Gender	100.0%	100.0%	100.0%

Section VI

Other Student & Enrollment Data

LIMITATIONS OF STATISTICAL HANDBOOK DATA

Section VI contains data on TCCD credit students for Spring 2011 (does not include Continuing Education students). This section is based on data from the Datatel/*Colleague* system. Minor differences are to be expected between Datatel/*Colleague* reports that are run at different times; thus this data may vary slightly from other Datatel/*Colleague* reports.

Minor differences are to be expected between the data in this section and the certified state reports.

Table 20. 2011SP Developmental Education Courses by Campus

Course	Campus					Total
	NE	NW	SE	SO	TR	
ENGL-0324	292	329	358	350	211	1540
ENGL-0325	149	164	310	102	81	806
ESOL-0301	0	2	12	0	0	14
ESOL-0302	14	0	8	0	0	22
ESOL-0304	17	0	15	0	0	32
ESOL-0305	0	0	6	0	0	6
ESOL-0307	0	4	17	0	0	21
ESOL-0308	0	2	0	0	0	2
ESOL-0310	0	1	11	0	0	12
ESOL-0311	0	2	0	0	0	2
MATH-0101	53	0	0	35	184	272
MATH-0102	78	0	0	42	202	322
MATH-0103	85	0	0	38	220	343
MATH-0104	82	0	0	42	237	361
MATH-0105	69	0	0	43	237	349
MATH-0106	62	0	0	36	248	346
MATH-0107	50	0	0	27	193	270
MATH-0108	46	0	0	18	205	269
MATH-0109	41	2	0	18	192	253
MATH-0302	676	693	841	478	248	2936
MATH-0304	789	755	887	615	171	3217
MATH-0350	966	1072	1373	754	110	4275
RDNG-0361	255	362	612	463	254	1946
RDNG-0363	59	129	166	141	76	571
STSC-0111	330	285	390	470	245	1720
Total	4113	3802	5006	3672	3314	19907

Table 21. 2011SP Dual Credit Enrollments by Campus*

Campus		Dual Credit
NE	Count	877
	% within Dual Credit	18.5%
NW	Count	1157
	% within Dual Credit	24.4%
SE	Count	1920
	% within Dual Credit	40.5%
SO	Count	469
	% within Dual Credit	9.9%
TR	Count	313
	% within Dual Credit	6.6%
Total	Count	4736
	% within Dual Credit	100.0%

*Data for this table came from a Datatel query run on 2/10/2011.

Table 22. 2011SP Distance Learning Enrollments by Campus

Campus		Instructional Method				Total
		CD1	CDL	TV1	VCT	
NE	Count	5316	61	762	1	6140
	% within Instructional Method	27.0%	73.5%	28.8%	33.3%	27.3%
NW	Count	6337	22	281	2	6642
	% within Instructional Method	32.1%	26.5%	10.6%	66.7%	29.6%
SE	Count	3470	0	190	0	3660
	% within Instructional Method	17.6%	.0%	7.2%	.0%	16.3%
SO	Count	3423	0	1414	0	4837
	% within Instructional Method	17.4%	.0%	53.4%	.0%	21.5%
TR	Count	1175	0	0	0	1175
	% within Instructional Method	6.0%	.0%	.0%	.0%	5.2%
Total	Count	19721	83	2647	3	22454
	% within Instructional Method	100.0%	100.0%	100.0%	100.0%	100.0%

Table 23. 2011SP Weekend College Enrollments by Campus

Campus		Weekend College
NE	Count	2160
	% within Weekend College	28.5%
NW	Count	1864
	% within Weekend College	24.6%
SE	Count	1419
	% within Weekend College	18.7%
SO	Count	967
	% within Weekend College	12.7%
TR	Count	1181
	% within Weekend College	15.6%
Total	Count	7591
	% within Weekend College	100.0%

Table 24. Ratio Comparison of 2010SP data to 2011SP data

TERM: 2010SP		CREDIT STUDENTS - ALL ENROLLMENTS		
<i>Datatel XUHS run on 02/04/10 at 05:01:22.</i>				
CAMPUS	HEADCOUNT	NUMBER OF ENROLLMENTS	CONTACT HOURS	SEMESTER HOURS
Northeast	16,202	41,038	2,164,216	112,561
Northwest	12,008	27,643	1,429,744	77,076
Southeast	13,761	34,154	1,742,304	95,250
South	11,899	28,033	1,538,872	79,336
Trinity River	4,754	10,627	496,944	27,499
TOTAL	58,624	141,495	7,372,080	391,722
TCCD (Undupl)	45,323			

TERM: 2011SP		CREDIT STUDENTS - ALL ENROLLMENTS		
<i>Datatel XUHS run on 02/07/11 at 06:04:35.</i>				
CAMPUS	HEADCOUNT	NUMBER OF ENROLLMENTS	CONTACT HOURS	SEMESTER HOURS
Northeast	16,742	42,125	2,195,272	114,412
Northwest	13,408	30,394	1,569,680	84,919
Southeast	15,117	37,661	1,900,224	104,245
South	12,428	29,011	1,568,206	80,799
Trinity River	5,355	12,981	584,320	32,810
TOTAL	63,050	152,172	7,817,702	417,185
TCCD (Undupl)	48,376			

2011SP/2010SP RATIOS				
CAMPUS	HEADCOUNT	NUMBER OF ENROLLMENTS	CONTACT HOURS	SEMESTER HOURS
Northeast	1.033	1.026	1.014	1.016
Northwest	1.117	1.100	1.098	1.102
Southeast	1.099	1.103	1.091	1.094
South	1.044	1.035	1.019	1.018
Trinity River	1.126	1.222	1.176	1.193
TOTAL	1.075	1.075	1.060	1.065
TCCD (Undupl)	1.067			