

Tarrant County College District (TCCD)
Distance Learning Trend Report
For Academic Years 2010-11 through 2015-16

Prepared by:

Office of Institutional Intelligence and Research

Tarrant County College District

October 2016

Table of Contents

Introduction.....	1
Table 1. Distance Learning Course Enrollments for AYs 2010-11 through 2015-16	1
Chart 1. Distance Learning Course Enrollments for AYs 2010-11 through 2015-16	2
1. Distance Learning Students	2
Table 2. Unduplicated Headcount for Distance Learning by Ethnicity.....	3
Table 3. Unduplicated Headcount for Distance Learning by Gender.....	4
2. Distance Learning Course Enrollments by Campus	4
Table 4. Distance Learning Course Enrollments for AYs 2010-11 through 2015-16 by Campus	4
Chart 2. Distance Learning Course Enrollments for AYs 2010-11 through 2015-16 by Campus	5
Chart 3. High Enrollment Distance Learning Courses AYs 2010-11 through 2015-16 – District	6
Chart 4. High Enrollment Distance Learning Courses AYs 2010-11 through 2015-16 – Northeast	7
Chart 5. High Enrollment Distance Learning Courses AYs 2010-11 through 2015-16 –Northwest	7
Chart 6. High Enrollment Distance Learning Courses AYs 2010-11 through 2015-16 –South	8
Chart 7. High Enrollment Distance Learning Courses AYs 2010-11 through 2015-16 – Southeast	8
Chart 8. High Enrollment Distance Learning Courses AYs 2010-11 through 2015-16 — Trinity River	9
Chart 9. High Enrollment Distance Learning Courses AYs 2010-11 through 2015-16 – TCC Connect	9
Table 5. High Enrollment Distance Learning Courses AYs 2010-11 through 2015-16	10

Introduction

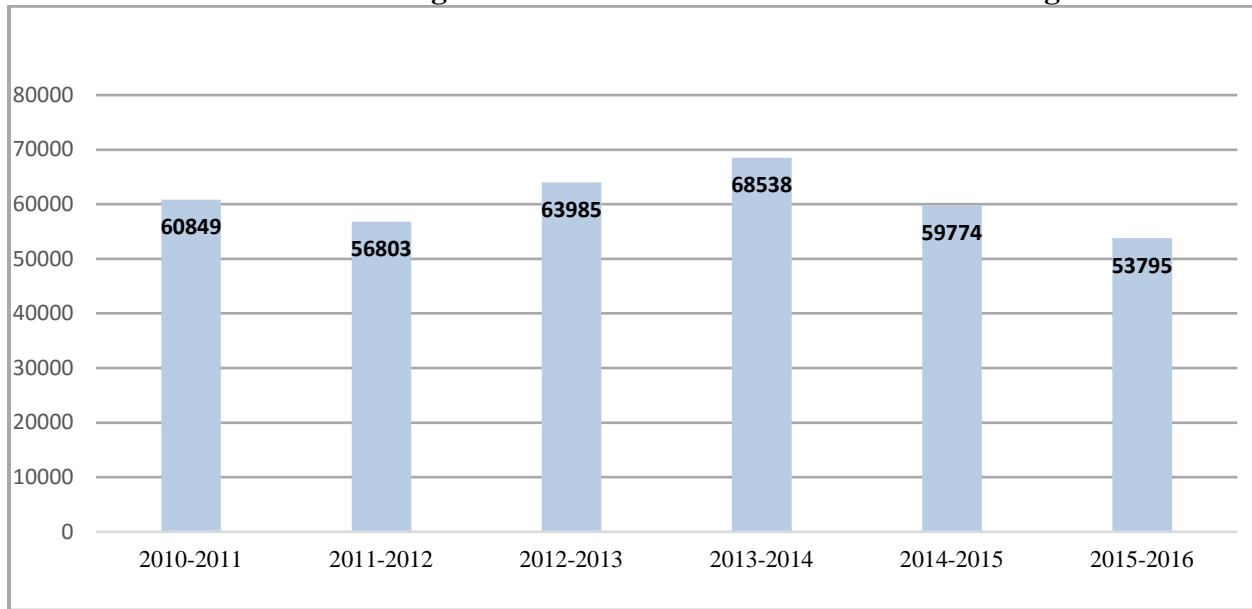
Distance learning trends from 2010 to 2016 are examined in this report. A brief overview is shown in this introduction. In Section 1 headcounts are presented. Headcounts are divided by gender and ethnicity. Distance learning course enrollments are shown in Section 2, and high enrollment courses are presented for each campus.

District-wide distance learning course enrollment increased from AY 2011-12 to AY 2013-14 before seeing a drop from AY 2013-14 to AY 2015-16. Enrollment decreased from 60,849 to 53,795 a difference of 7,054, reflecting an 11.6% decline.

Table 1. Distance Learning Course Enrollments for AYs 2010-11 through 2015-16

Semester	Academic Year					
	2010-2011	2011-2012	2012-2013	2013-2014	2014-2015	2015-2016
Fall	22,388	21,951	23,246	25,348	21,431	18,880
Spring	22,817	21,117	23,734	25,217	22,906	20,057
Summer	15,644	13,735	17,005	17,973	15,437	14,858
Total	60,849	56,803	63,985	68,538	59,774	53,795

Source: ST Student Enrollment Data

Chart 1. Distance Learning Course Enrollments for AYs 2010-11 through 2015-16

Source: ST Student Enrollment Data.

1. Distance Learning Students

1.1. Unduplicated Headcount for Distance Learning by Ethnicity

Overall, course enrollments fell by 11.6% in the period under review (Table 2), and the unduplicated student headcount in distance learning declined by 10.5% during the same time period. Total unduplicated student headcount for AY 2010-11 was 24,655 while most recently unduplicated headcount was 22,070 in AY 2015-16. Table 2 provides the unduplicated headcount broken down by ethnicity for distance learning in AY 2010-11 through AY 2015-16 at TCCD. As observed, the three ethnicities which consistently had the highest distance learning headcount in the District are White (49.6% for AY 2015-16), Hispanic Latino (21.8% for AY 2015-16), and Black/African American (18.7% for AY 2015-16).

Table 2. Unduplicated Headcount for Distance Learning by Ethnicity

Ethnicity	2010-2011	2011-2012	2012-2013	2013-2014	2014-2015	2015-2016
American Indian / Alaska Native	126	135	124	120	127	93
Asian	1,234	1,250	1,319	1,416	1,360	1,199
Black / African American	4,943	4,720	5,138	5,150	4,630	4,119
Hispanic Latino	3,924	3,834	4,575	5,405	5,154	4,805
International	178	143	164	159	148	142
Multiracial	50	97	253	427	491	486
Native Hawaiian / Pacific Islander	15	30	42	58	52	39
Unknown / Not Reported	196	196	214	264	248	236
White	13,989	12,966	13,412	13,396	11,759	10,951
Total	24,655	23,371	25,241	26,395	23,969	22,070

Source: ST Student Enrollment Data

1.2. Unduplicated Headcount for Distance Learning Enrollments by Gender

A look at headcount by gender gives a further glimpse on the trend of distance learning at TCCD. Female headcount has consistently been higher than male headcount at TCCD in the period under review. In AY 2010-11, male students were 31.8% of the distance learning population, and the percentage remained almost unchanged at 31.2% in the 2015-16 year. The total number of female students in distance learning in AY 2010-11 stood at 16,825 and followed the trend of increasing to 18,049 students in AY 2013-14 before decreasing in AY 2015-16 to 15,187 students.

Table 3. Unduplicated Headcount for Distance Learning Enrollments by Gender

Gender	2010-2011	2011-2012	2012-2013	2013-2014	2014-2015	2015-2016
Female	16,825	16,150	17,383	18,049	16,390	15,187
Male	7,830	7,221	7,858	8,346	7,579	6,883
Total	24,655	23,371	25,241	26,395	23,969	22,070

Source: ST Student Enrollment Data

2. Distance Learning Course Enrollments by Campus

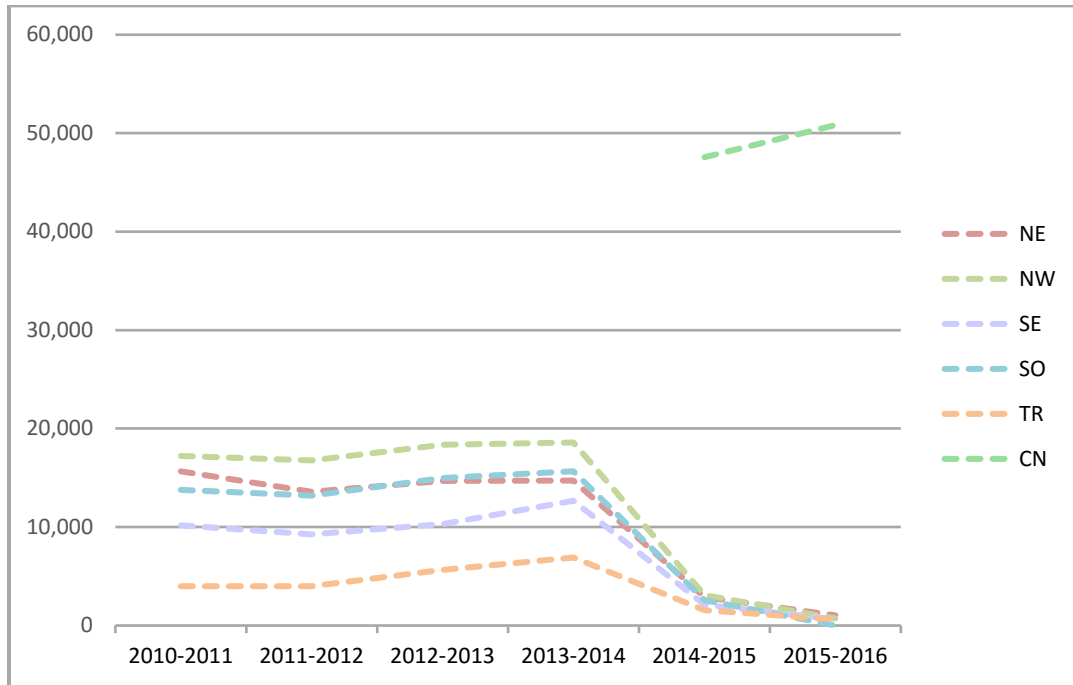
With the creation of the TCC Connect (CN) online campus the rest of the campuses saw a marked decline in AY 2015-16, as CN gained responsibility for most distance learning courses, as shown in Table 4 below and illustrated in Chart 2.

Table 4. Distance Learning Course Enrollments for AYs 2010-11 through 2015-16 by Campus

Academic Year	Campus						District
	NE	NW	SE	SO	TR	CN	
2010-2011	15,658	17,237	10,162	13,786	4,006		60,849
2011-2012	13,587	16,765	9,265	13,195	3,991		56,803
2012-2013	14,673	18,356	10,314	14,987	5,655		63,985
2013-2014	14,713	18,586	12,670	15,664	6,905		68,538
2014-2015	2,882	3,090	2,111	2,563	1,569	47,559	59,774
2015-2016	1,032	721	637	13	608	50,784	53,795

Source: ST Student Enrollment Data

Chart 2. Distance Learning Course Enrollments for AYs 2010-11 through 2015-16 by Campus

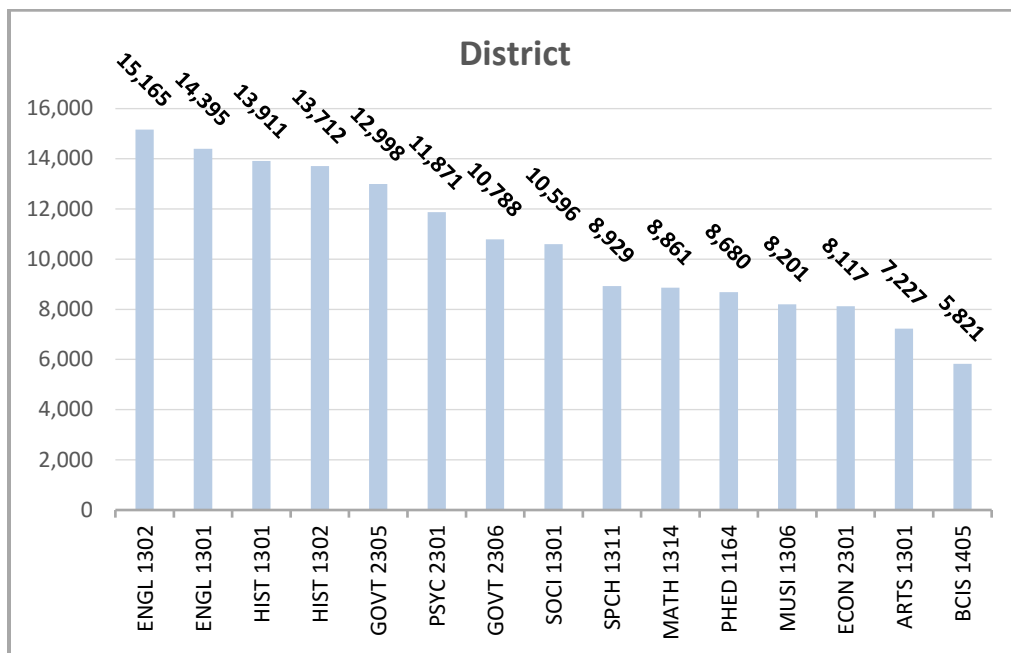


Source: ST Student Enrollment Data

Distance Learning Courses with the Highest Enrollment

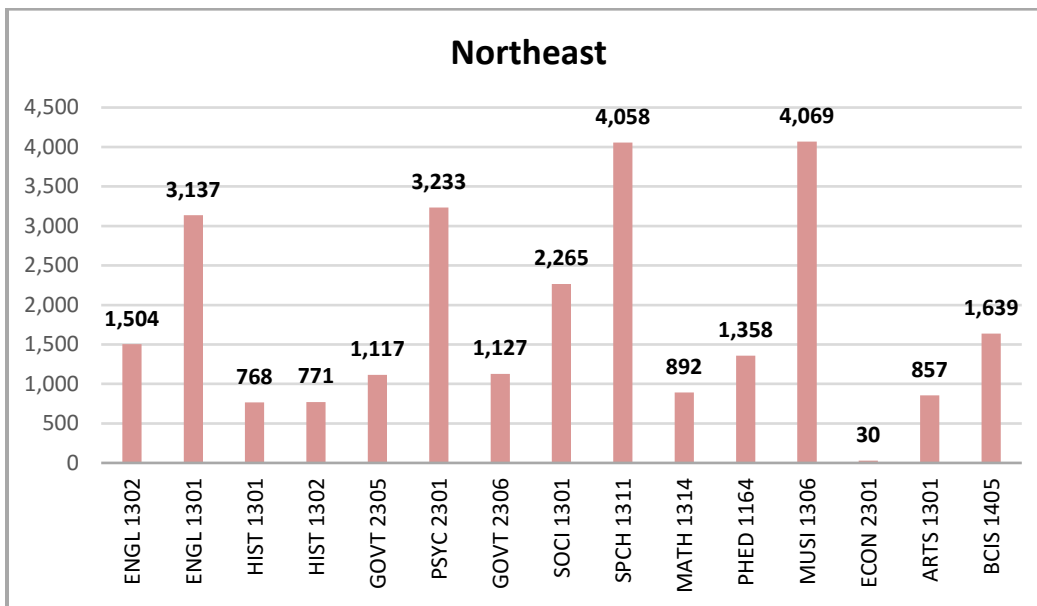
Charts 3-8 below show the distance learning courses with the highest enrollments District-wide and by campus for AYs 2010-11 through 2015-16. ENGL 1302 and ENGL 1301 are the most popular online courses at TCCD. Table 5 (see page 10) provides data for the 15 highest enrolled distance learning courses by campus.

Chart 3. High Enrollment Distance Learning Courses AYs 2010-11 through 2015-16 – District



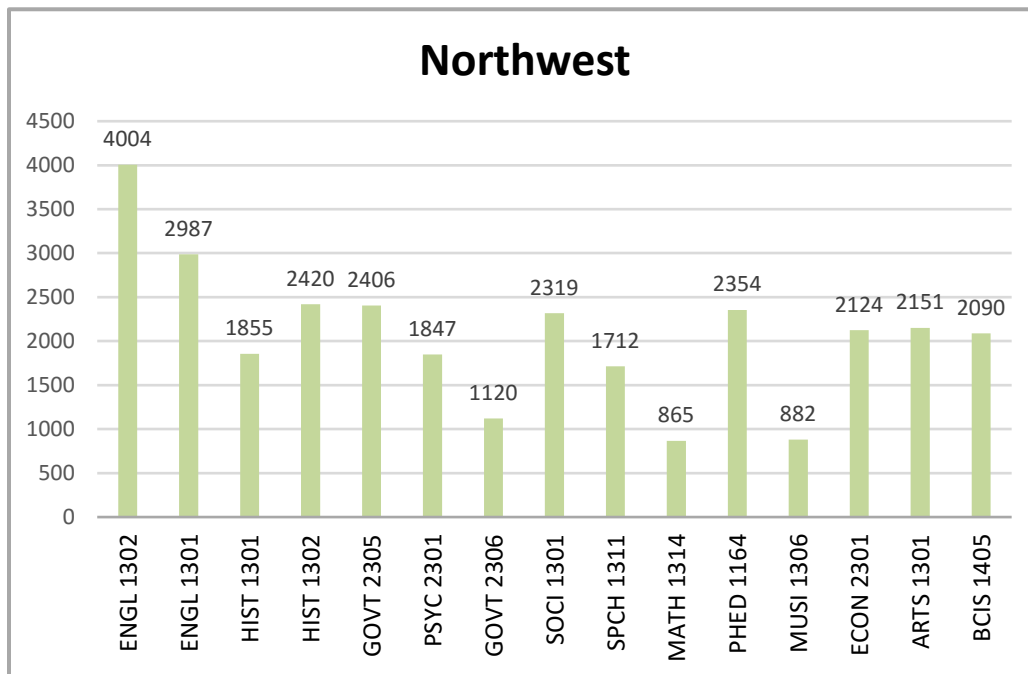
Source: ST Student Enrollment Data.

Chart 4. High Enrollment Distance Learning Courses AYs 2010-11 through 2015-16 – Northeast



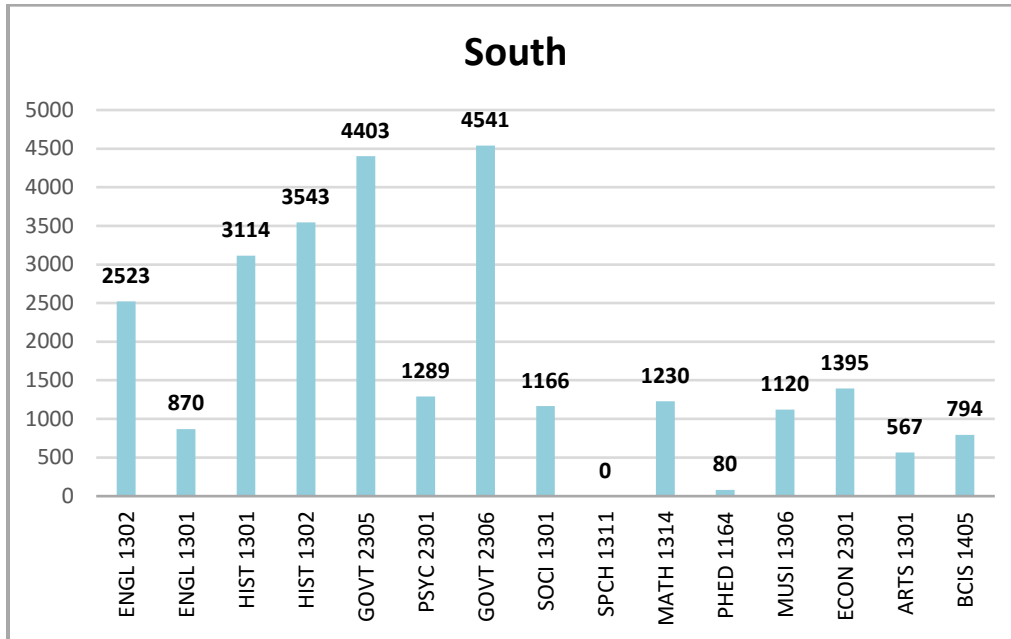
Source: ST Student Enrollment Data.

Chart 5. High Enrollment Distance Learning Courses AYs 2010-11 through 2015-16 – Northwest



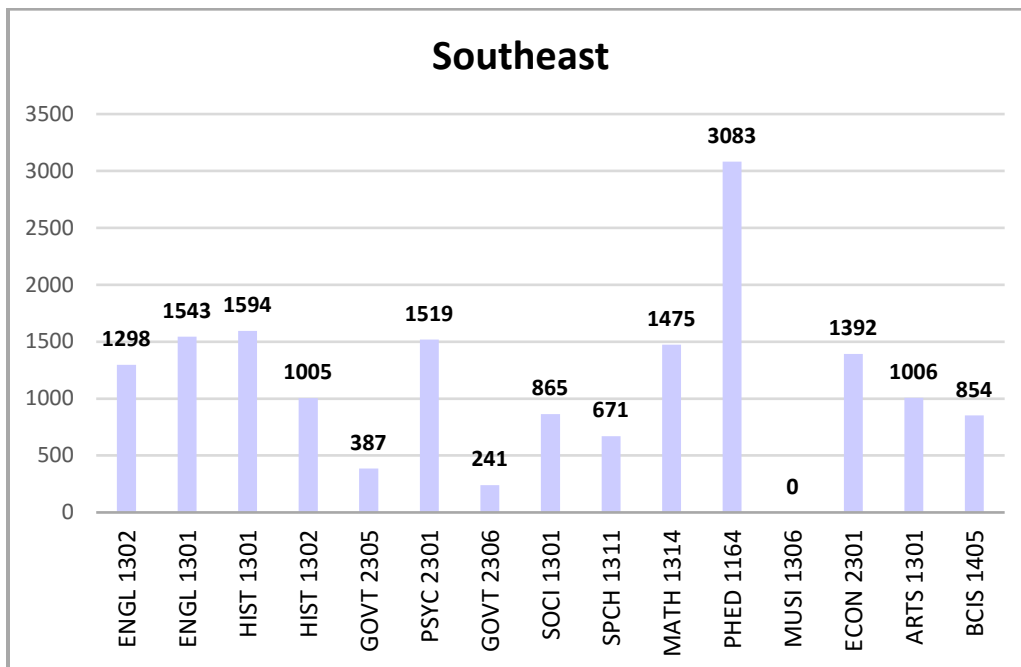
Source: ST Student Enrollment Data.

Chart 6. High Enrollment Distance Learning Courses AYs 2010-11 through 2015-16 – South



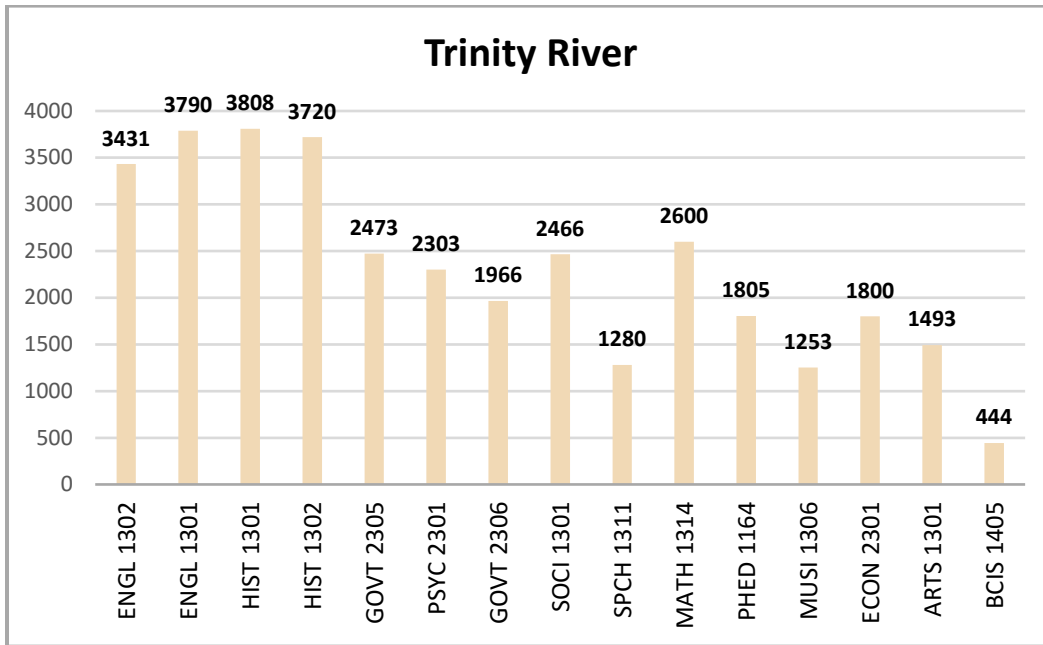
Source: ST Student Enrollment Data.

Chart 7. High Enrollment Distance Learning Courses AYs 2010-11 through 2015-16 – Southeast



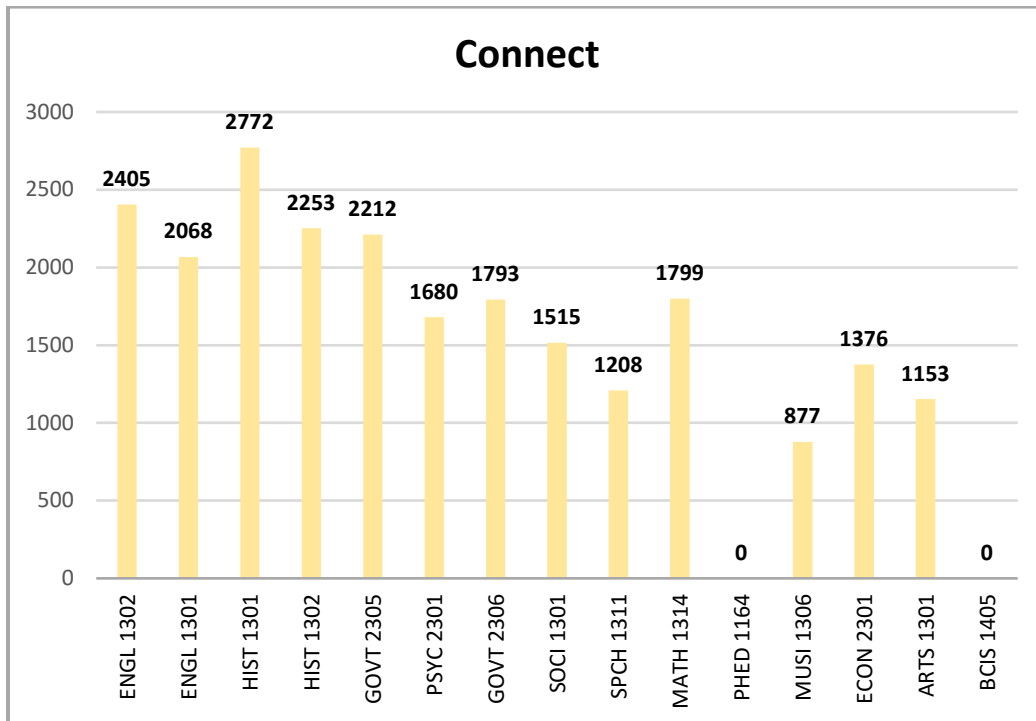
Source: ST Student Enrollment Data.

Chart 8. High Enrollment Distance Learning Courses AYs 2010-11 through 2015-16 – Trinity River



Source: ST Student Enrollment Data.

Chart 9. High Enrollment Distance Learning Courses AYs 2010-11 through 2015-16– Connect



Source: ST Student Enrollment Data.

Table 5. High Enrollment Distance Learning Courses AYs 2010-11 through 2015-16*

Course	NE	NW	SE	SO	TR	CN	District
ENGL 1302	1,504	4,004	1,298	2,523	894	4,950	15,173
ENGL 1301	3,137	2,987	1,543	870	1,765	4,097	14,399
HIST 1301	768	1,855	1,594	3,114	1,038	5,553	13,922
HIST 1302	771	2,420	1,005	3,543	1,489	4,489	13,717
GOVT 2305	1,117	2,406	387	4,403	253	4,440	13,006
PSYC 2301	3,233	1,847	1,519	1,289	431	3,561	11,880
GOVT 2306	1,127	1,120	241	4,541	90	3,675	10,794
SOCI 1301	2,265	2,319	865	1,166	826	3,158	10,599
SPCH 1311	4,058	1,712	671	0	0	2,491	8,932
MATH 1314	892	865	1,475	1,230	638	3,769	8,869
PHED 1164	1,358	2,354	3,083	80	1,145	660	8,680
MUSI 1306	4,069	882	0	1,120	0	2,130	8,201
ECON 2301	30	2,124	1,392	1,395	650	2,529	8,120
ARTS 1301	857	2,151	1,006	567	314	2,334	7,229
BCIS 1405	1,639	2,090	854	794	444	0	5,821

*Top 15 courses with highest enrollments.

Note: Table 3 is sorted in descending order by Total column