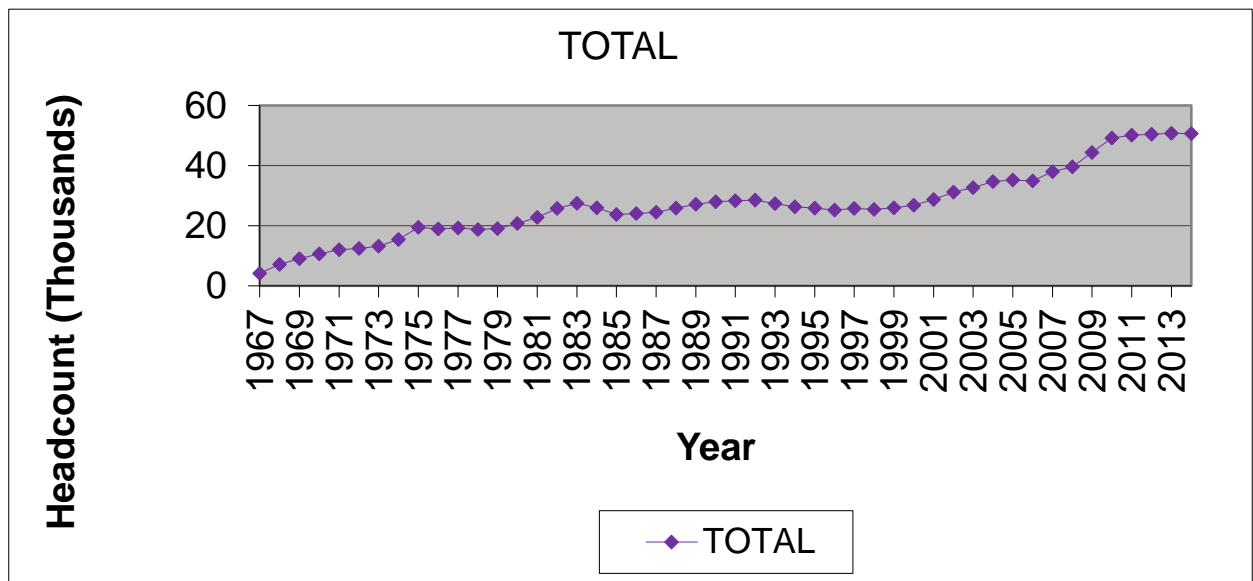


STATISTICAL HANDBOOK

2014FL

HEADCOUNT ENROLLMENTS FALL SEMESTERS -- 1967 – PRESENT



Office of Institutional Intelligence and
Research

Tarrant County College

Table of Contents

TCCD 2014 Fall Semester Statistical Handbook

	Page
Introduction	1
Section I: Historical Data	2
Table 1. Headcount and Full-Time Equivalent	3
Figure 1. Headcount Enrollments by Campus, Fall Semesters	4
Section II: Demographic Data	5
Table 2. 2014 Fall Headcount, Enrollments, Contact Hours, and Semester Hours	6
Table 3. 2014 Fall – Race & Ethnicity by Gender – District	7
Table 4. 2014 Fall – Race & Ethnicity by Gender – South	8
Table 5. 2014 Fall – Race & Ethnicity by Gender – Northeast	9
Table 6. 2014 Fall – Race & Ethnicity by Gender – Northwest	10
Table 7. 2014 Fall – Race & Ethnicity by Gender – Southeast	11
Table 8. 2014 Fall – Race & Ethnicity by Gender – Trinity River	12
Table 9a. Average Age by Campus – Separated by Age Group	13
Table 9b. Average Age by Campus – Mean	13
Table 9c. Students by Zip Code	14
Table 10. Full/Part Time for District	17
Table 11. Full/Part Time by Campus	17
Section III: Course Enrollments by Department by Campus	18
Table 12. Enrollments by Department	19
Section IV: Course Enrollments by Course Number by Campus	22
Table 13. Enrollments by Course	23
Section V: IPEDS Race & Ethnicity Data	39
Table 14. 2014 Fall – Race/Ethnicity by Gender – District	40
Table 15. 2014 Fall – Race/Ethnicity by Gender – South	41
Table 16. 2014 Fall – Race/Ethnicity by Gender – Northeast	42
Table 17. 2014 Fall – Race/Ethnicity by Gender – Northwest	43
Table 18. 2014 Fall – Race/Ethnicity by Gender – Southeast	44
Table 19. 2014 Fall – Race/Ethnicity by Gender – Trinity River	45
Section VI: Other Student & Enrollment Data	46
Table 20. Developmental Education Courses by Campus	47
Table 21. Dual Credit Enrollments by Campus	49
Table 22. Distance Learning Enrollments by Campus	50
Table 23. Sections Taught by Adjunct & Full-time Faculty	51
Table 24. Ratio Comparison of 2014FL data to 2013FL data	52
Table 25. Weekend College Enrollments by Campus	53
Table 26. TCC Connect Enrollments	55

INTRODUCTION

This statistical handbook contains data on TCCD credit students for Fall 2014. It does not include Continuing Education students. NSOR (New Student Orientation) enrollments are also excluded from this handbook.

Table 2 contains information related to the source of the data in this report and how the data in this report relates to data in other reports such as the certified state reports. Minor differences are to be expected between *Colleague* reports that are run at different times; this data may vary slightly from other *Colleague* reports. Audit enrollments are included in this report.

If there are questions about this statistical handbook, please contact the TCCD Office of Institutional Intelligence and Research.

Please note: there was significant change in the student headcount on all five campuses due to internal reorganization (TCC Connect).

Section I

HISTORICAL DATA

LIMITATIONS OF STATISTICAL HANDBOOK DATA

Section I contains data on TCCD credit students for Fall 2014 (does not include Continuing Education students).

This section is based on data collected from the *Colleague* system for all semesters beginning in the year 2004. All data identified that is prior to 2004 was collected utilizing the Legacy system. Minor differences are to be expected between *Colleague* reports that are run at different times; thus, this data may vary slightly from other *Colleague* reports.

Minor differences are to be expected between the data in this section and the certified state reports.

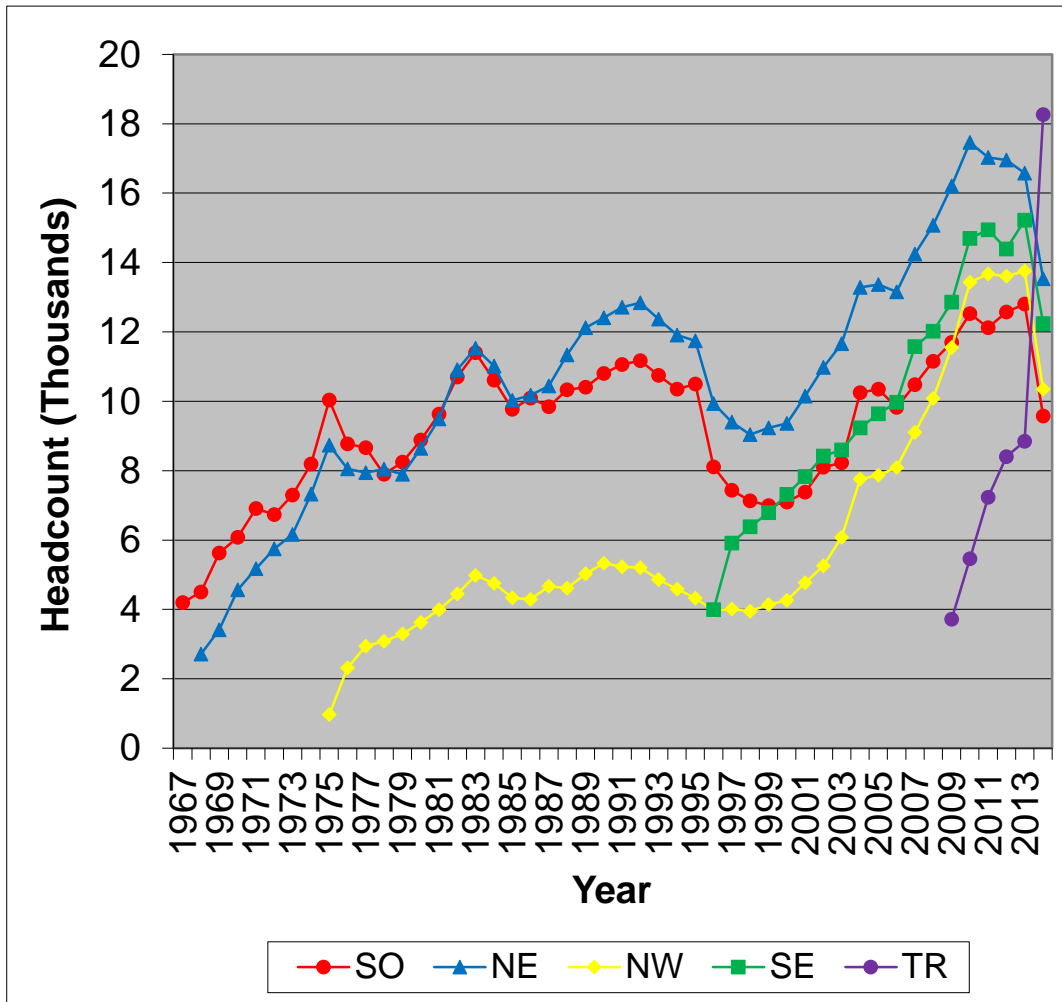
**TABLE 1--FALL SEMESTERS
HEADCOUNT AND FULL-TIME EQUIVALENT**

YEAR	District			South			Northeast			Northwest			Southeast			Trinity River		
	Total	HC	FTE	HC	FTE	% of Total	HC	FTE	% of Total	HC	FTE	% of Total	HC	FTE	% of Total	HC	FTE	% of Total
1976-77	18899	19148	11459	8776	5357	46.75	8053	4741	41.37	2319	1361	11.88						
1977-78	19257	19554	11323	8663	5086	44.92	7945	4540	40.10	2946	1697	14.99						
1978-79	18745	19018	10302	7895	4314	41.88	8042	4304	41.78	3081	1684	16.35						
1979-80	19085	19432	10375	8243	4458	42.97	7893	4158	40.08	3296	1759	16.95						
1980-81	20798	21152	11124	8883	4709	42.33	8644	4504	40.49	3625	1911	17.18						
1981-82	22731	23117	12035	9627	5036	41.84	9493	4936	41.01	3997	2063	17.14						
1982-83	25746	26163	13704	10703	5615	40.97	10910	5699	41.59	4550	2390	17.44						
1983-84	27452	27919	14398	11401	5930	41.19	11535	5905	41.01	4983	2563	17.80						
1984-85	25990	26369	13257	10606	5386	40.63	11010	5490	41.41	4753	2381	17.96						
1985-86	23783	24135	12408	9768	5011	40.39	10030	5193	41.85	4337	2204	17.76						
1986-87	24092	24562	12726	10090	5110	40.15	10178	5422	42.61	4294	2194	17.24						
1987-88	24490	24949	12989	9839	5004	38.52	10445	5588	43.02	4665	2397	18.45						
1988-89	25857	26280	13746	10334	5247	38.17	11333	6077	44.21	4613	2422	17.62						
1989-90	27109	27559	14339	10409	5337	37.22	12120	6409	44.70	5030	2593	18.08						
1990-91	27999	28546	15082	10804	5643	37.42	12410	6669	44.22	5332	2770	18.37						
1991-92	28349	29009	15332	11064	5702	37.19	12711	6888	44.93	5234	2742	17.88						
1992-93	28515	29211	15624	11168	5857	37.49	12840	7020	44.93	5203	2747	17.58						
1993-94	27352	27977	15075	10749	5680	37.68	12367	6802	45.12	4861	2593	17.20						
1994-95	26253	26838	14387	10349	5474	38.05	11906	6456	44.87	4583	2457	17.08						
1995-96	25850	26565	14186	10496	5559	39.19	11742	6290	44.34	4327	2337	16.47						
1996-97	25174	25998	13857	8106	4333	31.27	9935	5323	38.41	3964	2128	15.36	3993	2073	14.96			
1997-98	25779	26762	14380	7436	3946	27.44	9397	5040	35.05	4013	2168	15.08	5916	3226	22.43			
1998-99	25432	26501	14828	7128	3943	26.59	9038	5066	34.17	3951	2158	14.55	6384	3661	24.69			
1999-00	25980	27159	15168	6991	3859	25.44	9230	5140	33.89	4145	2288	15.08	6793	3881	25.59			
2000-01	26836	28038	15740	7097	3933	24.99	9364	5249	33.35	4263	2366	15.03	7314	4192	26.63			
2001-02	28751	30139	17066	7383	4195	24.58	10149	5737	33.62	4772	2620	15.35	7835	4514	26.45			
2002-03	31169	32755	18479	8096	4615	24.97	10975	6138	33.22	5259	2912	15.76	8425	4814	26.05			
2003-04	32657	34562	19388	8229	4588	23.66	11663	6505	33.55	6077	3354	17.30	8593	4941	25.48			
2004-05	34642	40519	20402	10248	5096	24.98	13279	6712	32.90	7757	3674	18.01	9235	4920	24.12			
2005-06	35163	41219	20509	10348	5057	24.66	13370	6693	32.63	7866	3717	18.12	9635	5042	24.58			
2006-07	34854	41045	20206	9826	4737	23.44	13157	6542	32.38	8091	3776	18.69	9971	5151	25.49			
2007-08	37948	45408	21658	10481	4922	22.73	14246	7013	32.38	9107	4096	18.91	11574	5627	25.98			
2008-09	39596	48335	22649	11155	5071	22.39	15071	7338	32.40	10086	4493	19.84	12023	5746	25.37			
2009-10	44355	56030	25536	11695	5269	20.63	16209	7762	30.40	11548	5051	19.78	12861	6080	23.81	3717	1374	5.381
2010-11	49108	63565	28417	12524	5497	19.34	17458	8199	28.85	13431	5797	20.40	14692	6719	23.64	5460	2205	7.759
2011-12	50062	64998	29054	12123	5267	18.13	17032	7877	27.11	13669	5868	20.20	14945	6939	23.88	7229	3102	10.68
2012-13	50439	65936	29403	12574	5388	18.32	16956	7890	26.83	13609	5794	19.71	14390	6701	22.79	8407	3630	12.35
2013-14	50765	67200	29395	12807	5331	18.14	16572	7567	25.74	13755	5880	20.00	15217	6867	23.36	8849	3750	12.76
2014-15	50628	63962	28160	9574	4128	14.66	13530	6408	22.76	10352	4692	16.66	12243	6019	21.37	18263	6913	24.55

Note: District total represents unduplicated headcount

Figure 1. Headcount Enrollments by Campus, Fall Semesters

Fall 1967 to Fall 2014



Please note: there was significant change in the student headcount on all five campuses due to internal reorganization (TCC Connect).

Section II

DEMOGRAPHIC DATA

Tables 3 through 8 in Section II contain the raw data for the categories of race and ethnicity. The changes in race and ethnicity are due to Federal reporting requirements. Section V contains race/ethnicity data of a different format.

LIMITATIONS OF STATISTICAL HANDBOOK DATA

Section II contains data on TCCD credit students for Fall 2014 (does not include Continuing Education students). This section is based on data from the *Colleague* system. Minor differences are to be expected between *Colleague* reports that are run at different times; thus, this data may vary slightly from other *Colleague* reports.

Minor differences are to be expected between the data in this section and the certified state reports.

Table 2. 2014FL Headcount, Enrollments, Contact Hours, and Semester Hours

UG CONTACT HOURS AND HEADCOUNT

TERM: 2014FL

CAMPUS	HEADCOUNT	CREDIT STUDENTS		SEMESTER HOURS	FTE
		NUMBER OF ENROLLMENTS	CONTACT HOURS		
Northeast	13,530	36,374	1,833,552	96,119	6,408
Northwest	10,352	26,239	1,336,544	70,378	4,692
Southeast	12,243	33,574	1,652,584	90,286	6,019
South	9,574	22,299	1,193,576	61,922	4,128
Trinity River	18,263	36,944	1,893,056	103,697	6,913
TOTAL (Dupl)	63,962	155,430	7,909,312	422,402	28,160
TOTAL (Undupl)	50,628				

Notes: This report was run on the *Colleague* system using the semester as defined by the *Colleague* field Term.

This report includes all enrollments for the *Colleague* Term (semester) as of the run time. This data will differ from some other reports that only include enrollments in classes with an ODOR (Official Day of Record) on or before the official semester ODOR (i.e. some reports exclude some "miniterm" enrollments).

This report may differ from other *Colleague* reports with different run time/dates. The data in this Table 2 is based on an XUHS run made 9/11/2014 and excludes NSOR enrollments.

This report will differ from the certified state reports. State reports use a different definition for semester.

Table 3. 2014FL Race & Ethnicity by Gender TCCD District

This page contains the raw data for the new categories of race and ethnicity. The changes in race and ethnicity are due to Federal reporting requirements. Section V contains ethnicity data of a format similar to previous Statistical Handbooks.

Gender/Races		Ethnics				Total
			Ethnicity Unknown	Hispanic/Latino	Non Hispanic/Latino	
Female		9	1	2963	2	2975
	American/Alaska Native	0	13	141	128	282
	Asian	0	67	30	1456	1553
	Black or African American	1	245	116	5691	6053
	Hawaiian/Pacific Islander	0	8	22	53	83
	International	0	141	15	66	222
	Multi	0	46	101	581	728
	Race Unknown	0	187	3272	146	3605
	White	2	508	2093	11340	13943
Total	12	1216	8753	19463	29444	
Male		10	0	1882	5	1897
	American/Alaska Native	0	5	91	85	181
	Asian	1	81	23	1347	1452
	Black or African American	1	238	63	3244	3546
	Hawaiian/Pacific Islander	0	5	8	41	54
	International	0	120	9	55	184
	Multi	0	39	81	407	527
	Race Unknown	0	142	2384	114	2640
	White	0	503	1367	8833	10703
Total	12	1133	5908	14131	21184	
Total		19	1	4845	7	4872
	American/Alaska Native	0	18	232	213	463
	Asian	1	148	53	2803	3005
	Black or African American	2	483	179	8935	9599
	Hawaiian/Pacific Islander	0	13	30	94	137
	International	0	261	24	121	406
	Multi	0	85	182	988	1255
	Race Unknown	0	329	5656	260	6245
	White	2	1011	3460	20173	24646
Total	24	2349	14661	33594	50628	

Table 4. 2014FL Race & Ethnicity by Gender SO Campus

This page contains the raw data for the new categories of race and ethnicity. The changes in race and ethnicity are due to Federal reporting requirements. Section V contains ethnicity data of a format similar to previous Statistical Handbooks.

Gender/Races		Ethnics				Total
			Ethnicity Unknown	Hispanic/Latino	Non Hispanic/Latino	
Female		2	0	676	0	678
	American/Alaska Native	0	2	26	20	48
	Asian	0	6	5	168	179
	Black or African American	0	46	18	1541	1605
	Hawaiian/Pacific Islander	0	0	2	7	9
	International	0	20	2	6	28
	Multi	0	6	9	92	107
	Race Unknown	0	27	568	31	626
	White	0	54	376	1692	2122
	Total	2	161	1682	3557	5402
Male		4	0	502	2	508
	American/Alaska Native	0	2	15	8	25
	Asian	0	13	3	174	190
	Black or African American	1	57	10	863	931
	Hawaiian/Pacific Islander	0	2	2	8	12
	International	0	22	2	9	33
	Multi	0	6	8	75	89
	Race Unknown	0	33	474	20	527
	White	0	65	276	1516	1857
	Total	5	200	1292	2675	4172
Total		6	0	1178	2	1186
	American/Alaska Native	0	4	41	28	73
	Asian	0	19	8	342	369
	Black or African American	1	103	28	2404	2536
	Hawaiian/Pacific Islander	0	2	4	15	21
	International	0	42	4	15	61
	Multi	0	12	17	167	196
	Race Unknown	0	60	1042	51	1153
	White	0	119	652	3208	3979
	Total	7	361	2974	6232	9574

Table 5. 2014FL Race & Ethnicity by Gender NE Campus

This page contains the raw data for the new categories of race and ethnicity. The changes in race and ethnicity are due to Federal reporting requirements. Section V contains ethnicity data of a format similar to previous Statistical Handbooks.

Gender/Races		Ethnics				Total
			Ethnicity Unknown	Hispanic/Latino	Non Hispanic/Latino	
Female		3	0	568	0	571
	American/Alaska Native	0	4	27	47	78
	Asian	0	20	8	410	438
	Black or African American	0	42	33	1324	1399
	Hawaiian/Pacific Islander	0	4	6	21	31
	International	0	37	5	18	60
	Multi	0	18	27	153	198
	Race Unknown	0	54	719	44	817
	White	0	136	490	3555	4181
Total	3	315	1883	5572	7773	
Male		2	0	347	0	349
	American/Alaska Native	0	1	13	25	39
	Asian	0	20	3	344	367
	Black or African American	0	59	18	800	877
	Hawaiian/Pacific Islander	0	2	1	15	18
	International	0	26	2	15	43
	Multi	0	12	21	119	152
	Race Unknown	0	37	546	31	614
	White	0	138	307	2853	3298
Total	2	295	1258	4202	5757	
Total		5	0	915	0	920
	American/Alaska Native	0	5	40	72	117
	Asian	0	40	11	754	805
	Black or African American	0	101	51	2124	2276
	Hawaiian/Pacific Islander	0	6	7	36	49
	International	0	63	7	33	103
	Multi	0	30	48	272	350
	Race Unknown	0	91	1265	75	1431
	White	0	274	797	6408	7479
Total	5	610	3141	9774	13530	

Table 6. 2014FL Race & Ethnicity by Gender NW Campus

This page contains the raw data for the new categories of race and ethnicity. The changes in race and ethnicity are due to Federal reporting requirements. Section V contains ethnicity data of a format similar to previous Statistical Handbooks.

Gender/Races		Ethnics				Total
			Ethnicity Unknown	Hispanic/Latino	Non Hispanic/Latino	
Female		1	0	698	0	699
	American/Alaska Native	0	4	34	29	67
	Asian	0	4	6	215	225
	Black or African American	1	29	19	750	799
	Hawaiian/Pacific Islander	0	1	3	8	12
	International	0	27	3	9	39
	Multi	0	10	16	120	146
	Race Unknown	0	32	672	19	723
	White	1	100	530	2421	3052
Total	3	207	1981	3571	5762	
Male		1	0	474	1	476
	American/Alaska Native	0	0	19	20	39
	Asian	1	8	1	226	236
	Black or African American	0	31	15	494	540
	Hawaiian/Pacific Islander	0	0	3	7	10
	International	0	20	1	5	26
	Multi	0	6	21	91	118
	Race Unknown	0	30	527	19	576
	White	0	97	360	2112	2569
Total	2	192	1421	2975	4590	
Total		2	0	1172	1	1175
	American/Alaska Native	0	4	53	49	106
	Asian	1	12	7	441	461
	Black or African American	1	60	34	1244	1339
	Hawaiian/Pacific Islander	0	1	6	15	22
	International	0	47	4	14	65
	Multi	0	16	37	211	264
	Race Unknown	0	62	1199	38	1299
	White	1	197	890	4533	5621
Total	5	399	3402	6546	10352	

Table 7. 2014FL Race & Ethnicity by Gender SE Campus

This page contains the raw data for the new categories of race and ethnicity. The changes in race and ethnicity are due to Federal reporting requirements. Section V contains ethnicity data of a format similar to previous Statistical Handbooks.

Gender/Races		Ethnics				Total
			Ethnicity Unknown	Hispanic/Latino	Non Hispanic/Latino	
Female		0	1	785	1	787
	American/Alaska Native	0	2	34	30	66
	Asian	0	26	9	516	551
	Black or African American	0	88	34	1967	2089
	Hawaiian/Pacific Islander	0	1	7	13	21
	International	0	51	5	27	83
	Multi	0	10	27	143	180
	Race Unknown	0	45	700	39	784
	White	0	72	442	1975	2489
	Total	0	296	2043	4711	7050
Male		1	0	531	1	533
	American/Alaska Native	0	1	33	22	56
	Asian	1	29	9	529	568
	Black or African American	0	91	22	1130	1243
	Hawaiian/Pacific Islander	0	1	5	8	14
	International	0	62	6	28	96
	Multi	0	11	21	106	138
	Race Unknown	0	34	488	22	544
	White	0	87	274	1640	2001
	Total	2	316	1389	3486	5193
Total		1	1	1316	2	1320
	American/Alaska Native	0	3	67	52	122
	Asian	1	55	18	1045	1119
	Black or African American	0	179	56	3097	3332
	Hawaiian/Pacific Islander	0	2	12	21	35
	International	0	113	11	55	179
	Multi	0	21	48	249	318
	Race Unknown	0	79	1188	61	1328
	White	0	159	716	3615	4490
	Total	2	612	3432	8197	12243

Table 8. 2014FL Race & Ethnicity by Gender TR Campus

This page contains the raw data for the new categories of race and ethnicity. The changes in race and ethnicity are due to Federal reporting requirements. Section V contains ethnicity data of a format similar to previous Statistical Handbooks.

Gender/Races		Ethnics				Total
			Ethnicity Unknown	Hispanic/Latino	Non Hispanic/Latino	
Female		3	0	1048	1	1052
	American/Alaska Native	0	4	56	47	107
	Asian	0	20	10	545	575
	Black or African American	0	97	50	2158	2305
	Hawaiian/Pacific Islander	0	2	7	17	26
	International	0	36	2	25	63
	Multi	0	16	36	241	293
	Race Unknown	0	68	1304	58	1430
	White	1	232	805	5149	6187
Total	4	475	3318	8241	12038	
Male		4	0	474	1	479
	American/Alaska Native	0	1	22	23	46
	Asian	0	21	9	381	411
	Black or African American	0	43	14	854	911
	Hawaiian/Pacific Islander	0	1	2	13	16
	International	0	25	2	15	42
	Multi	0	10	21	114	145
	Race Unknown	0	32	739	43	814
	White	0	198	435	2728	3361
Total	4	331	1718	4172	6225	
Total		7	0	1522	2	1531
	American/Alaska Native	0	5	78	70	153
	Asian	0	41	19	926	986
	Black or African American	0	140	64	3012	3216
	Hawaiian/Pacific Islander	0	3	9	30	42
	International	0	61	4	40	105
	Multi	0	26	57	355	438
	Race Unknown	0	100	2043	101	2244
	White	1	430	1240	7877	9548
Total	8	806	5036	12413	18263	

Table 9a. 2014FL Age by Campus

		Campus					Total
		NE	NW	SE	SO	TR	
Under 21	Count	4873	3944	4986	3104	8178	25085
	% within Campus	36.0%	38.1%	40.7%	32.4%	44.8%	39.2%
21-25	Count	3893	2724	3428	2559	3996	16600
	% within Campus	28.8%	26.3%	28.0%	26.7%	21.9%	26.0%
26-30	Count	1726	1351	1396	1292	2276	8041
	% within Campus	12.8%	13.1%	11.4%	13.5%	12.5%	12.6%
31-35	Count	1073	874	833	818	1429	5027
	% within Campus	7.9%	8.4%	6.8%	8.5%	7.8%	7.9%
36-40	Count	655	534	595	556	890	3230
	% within Campus	4.8%	5.2%	4.9%	5.8%	4.9%	5.0%
Over 40	Count	1310	925	1005	1245	1494	5979
	% within Campus	9.7%	8.9%	8.2%	13.0%	8.2%	9.3%
Total	Count	13530	10352	12243	9574	18263	63962
	% within Campus	100.0%	100.0%	100.0%	100.0%	100.0%	100.0%

Table 9b. 2014FL Average Age by Campus

NE	NW	SE	SO	TR	TCCD
25.85	25.51	25.01	27.64	25.21	25.67*

* The TCCD average age of 25.67 is based on the average age of the unduplicated enrollment count of 50,628.

Table 9c. 2014FL Students by ZIP Code

Zip Code	Campus					Total
	NE	NW	SE	SO	TR	
76063	119	90	1119	234	852	2414
76137	844	752	85	108	537	2326
76244	680	579	53	78	542	1932
76179	204	1092	67	91	432	1886
75052	129	69	1148	113	405	1864
76017	123	75	824	250	497	1769
76002	78	64	940	89	436	1607
76133	132	138	72	696	548	1586
76010	115	63	897	124	205	1404
76001	67	61	717	139	398	1382
76018	74	40	856	98	302	1370
76014	80	51	838	116	252	1337
76123	102	105	92	572	435	1306
76131	216	658	56	80	287	1297
76116	109	349	53	221	522	1254
76028	79	81	140	569	361	1230
76248	574	128	30	34	460	1226
76180	758	126	43	78	219	1224
76108	107	560	43	117	355	1182
76106	95	626	13	47	318	1099
76112	301	91	87	246	333	1058
76119	95	62	85	531	247	1020
76051	635	63	35	31	222	986
76016	93	48	317	217	310	985
76021	591	58	45	38	236	968
76039	591	57	56	44	203	951
76013	122	43	392	127	252	936
76140	80	62	77	486	224	929
76117	415	158	23	37	272	905
76110	52	70	31	310	406	869
76053	553	55	39	47	174	868
76134	67	64	61	435	207	834
76040	501	59	60	36	154	810
76182	484	61	22	26	207	800
76148	418	119	28	37	174	776
76036	55	78	57	333	248	771
76006	168	49	284	62	179	742
76114	44	290	23	44	331	732
76107	69	106	25	101	389	690
76135	60	405	14	31	165	675
76132	59	74	47	264	227	671
76111	137	112	15	61	315	640
76011	123	35	268	49	151	626
76012	157	37	190	60	177	621
76115	27	45	20	284	181	557

Zip Code	Campus					Total
	NE	NW	SE	SO	TR	
76015	45	25	298	66	119	553
76052	71	277	21	29	125	523
76118	309	41	17	30	122	519
76105	43	34	24	219	194	514
76120	183	25	60	85	155	508
76020	36	246	18	30	176	506
76104	36	41	31	179	212	499
76262	225	108	6	25	134	498
76126	37	152	22	114	171	496
76092	196	19	10	11	253	489
76022	274	27	17	15	98	431
76164	42	173	6	21	174	416
76103	92	39	18	89	169	407
76034	252	22	9	7	109	399
76109	35	46	15	86	157	339
75050	70	21	128	24	63	306
76054	192	19	11	8	73	303
75054	20	9	150	14	108	301
76177	78	139	13	13	58	301
76060	11	11	63	65	71	221
76102	28	26	18	31	101	204
75051	15	8	134	14	30	201
76009	8	11	69	54	40	182
76247	42	84	6	7	31	170
76058	10	14	7	71	58	160
75104	10	6	82	22	33	153
76008	12	61	3	11	44	131
76155	60	13	19	8	26	126
76082	11	41	6	11	26	95
76078	16	45	1	6	19	87
76065	6	6	46	8	20	86
76087	9	26	5	15	26	81
76085	7	31	2	7	24	71
76084	7	4	28	7	13	59
75115	8	10	24	4	11	57
76049	4	16	7	18	12	57
75038	19	3	9	5	14	50
75249	4	3	31	4	8	50
76031	3	8	2	15	20	48
76033	4	3	2	17	21	47
76086	4	11	3	6	16	40
75062	19	4	3	2	11	39
75165	6	5	15	5	7	38
76093	4	8	2	10	10	34
75236	3	0	16	5	9	33
75241	5	5	7	6	10	33
76048	4	9	3	8	8	32
76234	7	13	2	2	8	32

Zip Code	Campus					Total
	NE	NW	SE	SO	TR	
75154	1	3	12	6	8	30
75217	7	6	9	3	5	30
75056	6	7	3	5	8	29
75137	0	3	16	2	8	29
75216	3	3	11	4	8	29
76071	8	15	2	1	2	28
75211	2	3	13	2	7	27
75067	11	2	4	3	6	26
75116	0	3	16	2	5	26
75134	3	1	8	6	8	26
75287	6	6	3	3	7	25
76059	1	1	1	14	8	25
75061	13	1	2	2	6	24
75232	3	3	8	3	7	24
75019	6	2	1	3	11	23
76023	1	14	0	1	7	23
75022	11	1	1	4	5	22
75060	7	4	6	1	4	22
75028	8	6	2	0	5	21
75146	5	4	7	1	4	21
76226	5	5	2	1	8	21
75215	3	3	7	5	2	20
76050	0	1	3	9	7	20
76088	4	6	0	2	8	20
76096	0	1	11	4	3	19
76201	2	4	3	2	8	19
75243	4	1	4	4	4	17
76210	0	7	0	1	9	17
75149	4	2	3	2	5	16
75227	3	4	4	2	3	16
75063	7	2	0	1	5	15
75237	1	2	8	1	3	15
76035	1	5	1	3	5	15
Other	230	265	196	171	320	1,182
Total	13,530	10,352	12,243	9,574	18,263	63,962

** ZIP Code groups with < 15 and students without Zip Codes are identified as Other.

Table 10. 2014FL Full/Part Time for TCCD

	Frequency	Percent
Part Time	35077	69.3
Full Time	15551	30.7
Total	50628	100.0

Table 10 is the full/part time student data for the TCCD district as a whole.

Table 11. 2014FL Full/Part Time by Campus

Campus		Full/Part Time		Total
		Part Time	Full Time	
NE	Count	10694	2836	13530
	% within Campus	79.0%	21.0%	100.0%
	% within Full/Part Time	20.1%	26.3%	21.2%
NW	Count	8352	2000	10352
	% within Campus	80.7%	19.3%	100.0%
	% within Full/Part Time	15.7%	18.5%	16.2%
SE	Count	9310	2933	12243
	% within Campus	76.0%	24.0%	100.0%
	% within Full/Part Time	17.5%	27.2%	19.1%
SO	Count	8048	1526	9574
	% within Campus	84.1%	15.9%	100.0%
	% within Full/Part Time	15.1%	14.1%	15.0%
TR	Count	16768	1495	18263
	% within Campus	91.8%	8.2%	100.0%
	% within Full/Part Time	31.5%	13.9%	28.6%
Total	Count	53172	10790	63962
	% within Campus	83.1%	16.9%	100.0%
	% within Full/Part Time	100.0%	100.0%	100.0%

Table 11 is the full/part time student data for each individual campus. For this table, only enrollments at the individual campus are considered. For example, if a student took 9 hours at SO and 3 hours at NE, the student is listed as part time at SO and part time at NE (and full time in Table 10).

Section III

Course Enrollments by Department by Campus

LIMITATIONS OF STATISTICAL HANDBOOK DATA

Section III contains data on TCCD credit students for Fall 2014 (does not include Continuing Education students). This section is based on data from the *Colleague* system. Minor differences are to be expected between *Colleague* reports that are run at different times; thus, this data may vary slightly from other *Colleague* reports.

Minor differences are to be expected between the data in this section and the certified state reports.

Section III excludes 12,430 enrollments in separate lab sections that are included in Section II. Section II contains 155,430 total enrollments for 2014FL. This section contains 143,000 enrollments.

Section III excludes NSOR (New Student Orientation) enrollments.

Course Enrollments

Tables 12 and 13 exclude 12,430 enrollments in separate lab sections that are included in Table 2. Table 2 contains 155,430 total enrollments for 2014FL. Tables 12 and 13 contain 143,000 enrollments.

Table 12. 2014FL Enrollments by Department

Department	Campus					Total
	NE	NW	SE	SO	TR	
ABDR	0	0	0	173	0	173
ACCT	370	415	534	250	194	1763
ACNT	41	9	25	313	0	388
AERM	0	906	0	0	0	906
AIRP	0	240	0	0	0	240
ANTH	73	0	0	0	90	163
ARCH	0	0	0	109	0	109
ARTC	229	0	0	0	0	229
ARTS	1153	696	834	560	962	4205
ARTV	20	0	0	0	0	20
AUMT	0	0	0	273	0	273
AVNC	0	24	0	0	0	24
BCIS	624	411	328	267	194	1824
BIOL	2266	1348	1911	1088	983	7596
BMGT	279	303	467	316	236	1601
BUSG	57	357	18	23	13	468
BUSI	272	139	276	295	155	1137
CDEC	321	0	0	0	0	321
CETT	0	0	0	100	0	100
CHEF	0	0	213	0	0	213
CHEM	752	419	640	360	332	2503
CJLE	0	83	0	0	0	83
CJSA	0	33	0	0	0	33
CNBT	0	0	0	119	0	119
COMM	289	20	24	18	0	351
COSC	620	561	634	324	238	2377
CPMT	5	0	0	28	0	33
CRIJ	0	568	0	0	0	568
DAAC	150	0	0	0	0	150
DANC	273	212	209	55	143	892
DFTG	0	0	0	182	0	182
DHYG	197	0	0	0	0	197
DRAM	247	228	512	241	361	1589
ECON	486	294	831	356	1266	3233
EDTC	12	0	0	0	0	12
EDUC	182	88	0	142	57	469
ELMT	0	0	0	11	0	11
ELPT	0	0	0	6	0	6
EMSP	308	0	0	0	0	308
ENGL	2685	2405	3648	1956	6925	17619

Department	Campus					Total
	NE	NW	SE	SO	TR	
ENGR	0	0	199	15	0	214
ENTC	0	0	0	17	0	17
EPCT	0	118	0	0	0	118
ESOL	18	0	190	0	0	208
FDNS	0	0	191	0	0	191
FIRS	0	110	0	0	0	110
FIRT	0	138	0	0	0	138
FLMC	54	0	0	0	0	54
FREN	143	0	23	96	0	262
FSHN	31	0	0	0	0	31
GAME	0	0	0	110	0	110
GEOG	101	57	59	60	111	388
GEOL	428	348	347	292	323	1738
GERM	70	0	0	0	0	70
GISC	0	0	0	0	51	51
GOVT	2377	1565	2107	1103	3100	10252
HALT	0	133	0	0	0	133
HAMG	0	0	151	0	0	151
HART	0	0	0	445	0	445
HECO	240	0	431	41	0	712
HIST	2470	1572	2096	1089	4291	11518
HITT	0	0	0	0	97	97
HPRS	41	0	0	0	520	561
HRPO	13	0	45	170	0	228
HUMA	15	405	28	40	165	653
HYDR	0	0	0	15	0	15
IBUS	0	32	0	0	0	32
IFWA	0	0	21	0	0	21
IMED	17	0	0	0	0	17
INEW	0	0	19	0	0	19
INRW	133	237	289	227	168	1054
ITCC	138	0	80	70	0	288
ITNW	96	52	20	24	0	192
ITSC	180	108	136	24	0	448
ITSE	92	0	104	56	0	252
ITSW	13	0	35	69	18	135
ITSY	74	94	44	11	0	223
LBRA	0	0	0	0	89	89
LGLA	371	0	0	0	0	371
LMGT	0	63	0	0	0	63
LTCA	0	0	0	0	135	135
MATH	4022	3098	4730	2927	3305	18082
MCHN	0	0	0	21	0	21
MILI	0	0	0	24	0	24
MRKG	34	0	86	83	324	527
MUAP	112	54	54	33	0	253
MUEN	81	39	44	20	0	184
MUSI	776	233	477	311	558	2355

Department	Campus					Total
	NE	NW	SE	SO	TR	
OSHT	0	51	0	0	0	51
PHED	1184	1130	1051	748	1281	5394
PHIL	631	511	379	368	664	2553
PHTC	46	0	0	0	0	46
PHYS	274	101	234	142	22	773
POFI	0	0	0	172	0	172
POFT	0	0	0	410	30	440
PSTR	0	0	36	0	0	36
PSYC	1512	894	1254	841	1880	6381
PSYT	85	0	0	0	0	85
PTHA	0	0	0	0	222	222
PTRT	0	0	0	36	0	36
RADR	0	0	0	0	126	126
RBTC	0	0	0	57	0	57
RDNG	239	186	266	208	112	1011
RELE	322	0	0	0	0	322
RNSG	0	0	0	0	1669	1669
RSPT	0	0	0	0	159	159
RSTO	0	0	67	0	0	67
RTVB	167	0	0	0	0	167
SCWK	29	0	0	0	0	29
SLNG	0	0	0	0	331	331
SLPS	0	114	0	0	0	114
SOCI	639	487	815	142	1146	3229
SOCW	45	25	38	0	0	108
SPAN	564	344	376	343	149	1776
SPCH	1745	1090	1414	730	1494	6473
SRGT	0	0	0	0	90	90
SRVY	0	0	0	17	0	17
STSC	1010	874	1400	988	565	4837
TECA	166	0	0	65	0	231
TECM	0	0	0	41	0	41
WLDG	0	0	0	219	0	219
TOTAL	32709	24022	30440	20485	35344	143000

Section IV

Course Enrollments by Course Number by Campus

LIMITATIONS OF STATISTICAL HANDBOOK DATA

Section IV contains data on TCCD credit students for Fall 2014 (does not include Continuing Education students). This section is based on data from the *Colleague* system. Minor differences are to be expected between *Colleague* reports that are run at different times; thus, this data may vary slightly from other *Colleague* reports.

Minor differences are to be expected between the data in this section and the certified state reports.

Section IV excludes 12,430 enrollments in separate lab sections that are included in Section II. Section II contains 155,430 total enrollments for 2014FL. This section contains 143,000 enrollments.

Section IV excludes NSOR (New Student Orientation) enrollments.

Table 13. 2014FL Enrollments by Course

Course	Campus					Total
	NE	NW	SE	SO	TR	
ABDR-1207	0	0	0	33	0	33
ABDR-1291	0	0	0	30	0	30
ABDR-1419	0	0	0	33	0	33
ABDR-1431	0	0	0	30	0	30
ABDR-1555	0	0	0	24	0	24
ABDR-1558	0	0	0	23	0	23
ACCT-2301	278	307	335	161	97	1178
ACCT-2302	92	108	199	89	97	585
ACNT-1303	0	0	0	82	0	82
ACNT-1311	13	9	25	65	0	112
ACNT-1313	28	0	0	41	0	69
ACNT-1329	0	0	0	29	0	29
ACNT-1331	0	0	0	41	0	41
ACNT-2303	0	0	0	26	0	26
ACNT-2309	0	0	0	10	0	10
ACNT-2335	0	0	0	19	0	19
AERM-1101	0	50	0	0	0	50
AERM-1205	0	45	0	0	0	45
AERM-1208	0	44	0	0	0	44
AERM-1240	0	34	0	0	0	34
AERM-1243	0	22	0	0	0	22
AERM-1254	0	22	0	0	0	22
AERM-1303	0	45	0	0	0	45
AERM-1310	0	54	0	0	0	54
AERM-1314	0	64	0	0	0	64
AERM-1315	0	45	0	0	0	45
AERM-1344	0	29	0	0	0	29
AERM-1345	0	40	0	0	0	40
AERM-1347	0	42	0	0	0	42
AERM-1349	0	42	0	0	0	42
AERM-1350	0	40	0	0	0	40
AERM-1351	0	35	0	0	0	35
AERM-1357	0	30	0	0	0	30
AERM-1456	0	31	0	0	0	31
AERM-2171	0	34	0	0	0	34
AERM-2172	0	36	0	0	0	36
AERM-2173	0	34	0	0	0	34
AERM-2252	0	40	0	0	0	40
AERM-2351	0	14	0	0	0	14
AERM-2447	0	34	0	0	0	34
AIRP-1215	0	26	0	0	0	26
AIRP-1255	0	4	0	0	0	4
AIRP-1270	0	14	0	0	0	14
AIRP-1271	0	2	0	0	0	2
AIRP-1301	0	39	0	0	0	39
AIRP-1313	0	57	0	0	0	57

Course	Campus					Total
	NE	NW	SE	SO	TR	
AIRP-1341	0	8	0	0	0	8
AIRP-1351	0	7	0	0	0	7
AIRP-1391	0	20	0	0	0	20
AIRP-1417	0	41	0	0	0	41
AIRP-2250	0	6	0	0	0	6
AIRP-2270	0	2	0	0	0	2
AIRP-2333	0	6	0	0	0	6
AIRP-2337	0	8	0	0	0	8
ANTH-2346	73	0	0	0	62	135
ANTH-2351	0	0	0	0	28	28
ARCH-1301	0	0	0	17	0	17
ARCH-1303	0	0	0	10	0	10
ARCH-1308	0	0	0	16	0	16
ARCH-1311	0	0	0	17	0	17
ARCH-1315	0	0	0	15	0	15
ARCH-2301	0	0	0	9	0	9
ARCH-2312	0	0	0	25	0	25
ARTC-1302	35	0	0	0	0	35
ARTC-1305	54	0	0	0	0	54
ARTC-1313	35	0	0	0	0	35
ARTC-1353	47	0	0	0	0	47
ARTC-2305	15	0	0	0	0	15
ARTC-2313	18	0	0	0	0	18
ARTC-2317	13	0	0	0	0	13
ARTC-2340	12	0	0	0	0	12
ARTS-1301	465	373	462	318	793	2411
ARTS-1303	132	42	59	25	48	306
ARTS-1304	0	0	38	0	0	38
ARTS-1311	71	29	28	15	39	182
ARTS-1312	7	0	0	9	0	16
ARTS-1316	153	77	88	44	48	410
ARTS-1317	4	16	11	8	6	45
ARTS-1320	0	0	0	14	0	14
ARTS-2313	0	0	0	0	12	12
ARTS-2316	55	36	44	45	16	196
ARTS-2317	10	14	14	5	0	43
ARTS-2323	11	0	0	0	0	11
ARTS-2326	7	10	11	13	0	41
ARTS-2327	0	5	2	0	0	7
ARTS-2333	18	0	9	0	0	27
ARTS-2341	0	0	0	12	0	12
ARTS-2346	33	56	45	29	0	163
ARTS-2347	15	11	8	3	0	37
ARTS-2348	16	15	13	19	0	63
ARTS-2349	4	0	2	1	0	7
ARTS-2356	131	0	0	0	0	131
ARTS-2357	21	0	0	0	0	21
ARTS-2366	0	8	0	0	0	8
ARTS-2367	0	4	0	0	0	4
ARTV-1303	20	0	0	0	0	20

Course	Campus					Total
	NE	NW	SE	SO	TR	
AUMT-1405	0	0	0	86	0	86
AUMT-1407	0	0	0	81	0	81
AUMT-1410	0	0	0	30	0	30
AUMT-2413	0	0	0	38	0	38
AUMT-2425	0	0	0	38	0	38
AVNC-1303	0	14	0	0	0	14
AVNC-1370	0	10	0	0	0	10
BCIS-1305	624	411	328	267	194	1824
BIOL-1406	237	248	293	132	132	1042
BIOL-1407	48	40	82	23	0	193
BIOL-1408	647	305	322	240	187	1701
BIOL-1409	155	43	150	92	24	464
BIOL-2306	29	0	0	54	0	83
BIOL-2316	0	0	0	0	59	59
BIOL-2389	0	0	0	4	0	4
BIOL-2401	617	413	589	247	327	2193
BIOL-2402	266	138	205	146	142	897
BIOL-2420	267	138	225	132	112	874
BIOL-2421	0	23	45	18	0	86
BMGT-1268	0	20	0	0	0	20
BMGT-1270	0	29	0	0	0	29
BMGT-1301	57	18	82	0	0	157
BMGT-1305	28	0	116	46	71	261
BMGT-1313	0	9	0	0	0	9
BMGT-1327	75	81	136	126	69	487
BMGT-1331	0	10	0	0	0	10
BMGT-1341	85	0	82	134	78	379
BMGT-1382	6	0	0	0	0	6
BMGT-1409	0	0	0	0	18	18
BMGT-2172	0	45	0	0	0	45
BMGT-2288	0	6	0	0	0	6
BMGT-2309	28	0	51	10	0	89
BMGT-2331	0	11	0	0	0	11
BMGT-2473	0	45	0	0	0	45
BMGT-2574	0	29	0	0	0	29
BUSG-1302	29	0	0	0	0	29
BUSG-1315	0	160	0	0	0	160
BUSG-1341	0	81	0	0	0	81
BUSG-2300	28	8	18	23	13	90
BUSG-2309	0	108	0	0	0	108
BUSI-1301	183	50	190	227	106	756
BUSI-2301	89	89	86	68	49	381
CDEC-1317	17	0	0	0	0	17
CDEC-1321	51	0	0	0	0	51
CDEC-1323	17	0	0	0	0	17
CDEC-1356	40	0	0	0	0	40
CDEC-1358	16	0	0	0	0	16
CDEC-1359	65	0	0	0	0	65
CDEC-1413	14	0	0	0	0	14
CDEC-1419	15	0	0	0	0	15

Course	Campus					Total
	NE	NW	SE	SO	TR	
CDEC-2307	27	0	0	0	0	27
CDEC-2322	14	0	0	0	0	14
CDEC-2326	29	0	0	0	0	29
CDEC-2341	16	0	0	0	0	16
CETT-1409	0	0	0	41	0	41
CETT-1449	0	0	0	37	0	37
CETT-2435	0	0	0	22	0	22
CHEF-1205	0	0	69	0	0	69
CHEF-1264	0	0	8	0	0	8
CHEF-1301	0	0	59	0	0	59
CHEF-1302	0	0	17	0	0	17
CHEF-1310	0	0	13	0	0	13
CHEF-1341	0	0	24	0	0	24
CHEF-1345	0	0	12	0	0	12
CHEF-2301	0	0	11	0	0	11
CHEM-1104	0	0	0	7	0	7
CHEM-1405	114	90	45	38	13	300
CHEM-1406	229	157	212	186	137	921
CHEM-1407	16	0	0	0	0	16
CHEM-1411	249	118	219	88	126	800
CHEM-1412	65	40	88	22	23	238
CHEM-2389	0	0	0	2	0	2
CHEM-2423	48	14	76	17	33	188
CHEM-2425	31	0	0	0	0	31
CJLE-1111	0	7	0	0	0	7
CJLE-1371	0	29	0	0	0	29
CJLE-1394	0	27	0	0	0	27
CJLE-1506	0	3	0	0	0	3
CJLE-1512	0	3	0	0	0	3
CJLE-1518	0	7	0	0	0	7
CJLE-2247	0	7	0	0	0	7
CJSA-1347	0	13	0	0	0	13
CJSA-2334	0	12	0	0	0	12
CJSA-2388	0	8	0	0	0	8
CNBT-1110	0	0	0	18	0	18
CNBT-1300	0	0	0	31	0	31
CNBT-1302	0	0	0	16	0	16
CNBT-1344	0	0	0	17	0	17
CNBT-1346	0	0	0	20	0	20
CNBT-2317	0	0	0	7	0	7
CNBT-2342	0	0	0	10	0	10
COMM-1307	174	20	24	18	0	236
COMM-1316	10	0	0	0	0	10
COMM-1335	28	0	0	0	0	28
COMM-2305	6	0	0	0	0	6
COMM-2311	34	0	0	0	0	34
COMM-2339	20	0	0	0	0	20
COMM-2366	17	0	0	0	0	17
COSC-1301	482	368	493	287	199	1829
COSC-1420	0	28	20	0	0	48

Course	Campus					Total
	NE	NW	SE	SO	TR	
COSC-1436	108	121	106	24	30	389
COSC-1437	30	44	0	13	0	87
COSC-2425	0	0	15	0	0	15
COSC-2436	0	0	0	0	9	9
CPMT-1311	0	0	0	12	0	12
CPMT-1449	0	0	0	16	0	16
CPMT-2402	5	0	0	0	0	5
CRIJ-1301	0	126	0	0	0	126
CRIJ-1306	0	47	0	0	0	47
CRIJ-1307	0	56	0	0	0	56
CRIJ-1310	0	80	0	0	0	80
CRIJ-1313	0	25	0	0	0	25
CRIJ-2313	0	18	0	0	0	18
CRIJ-2314	0	85	0	0	0	85
CRIJ-2323	0	71	0	0	0	71
CRIJ-2328	0	60	0	0	0	60
DAAC-1304	30	0	0	0	0	30
DAAC-2307	32	0	0	0	0	32
DAAC-2330	31	0	0	0	0	31
DAAC-2341	31	0	0	0	0	31
DAAC-2343	13	0	0	0	0	13
DAAC-2366	13	0	0	0	0	13
DANC-1110	8	0	0	0	0	8
DANC-1111	1	0	0	0	0	1
DANC-1112	3	7	0	0	0	10
DANC-1113	5	2	0	0	0	7
DANC-1128	12	0	0	0	0	12
DANC-1129	1	0	0	0	0	1
DANC-1141	22	9	0	0	0	31
DANC-1142	5	3	0	0	0	8
DANC-1145	21	16	0	0	0	37
DANC-1146	3	12	0	0	0	15
DANC-1147	11	12	0	0	0	23
DANC-1148	2	2	0	0	0	4
DANC-1151	19	11	12	10	0	52
DANC-1152	6	2	0	0	0	8
DANC-1341	17	32	20	10	0	79
DANC-1342	4	3	4	3	0	14
DANC-1345	24	48	41	16	0	129
DANC-1346	9	8	8	1	0	26
DANC-1347	12	14	32	13	0	71
DANC-1348	1	8	13	2	0	24
DANC-2112	4	1	0	0	0	5
DANC-2113	2	0	0	0	0	2
DANC-2141	4	3	0	0	0	7
DANC-2142	5	0	0	0	0	5
DANC-2145	5	3	0	0	0	8
DANC-2146	3	4	0	0	0	7
DANC-2151	5	1	0	0	0	6
DANC-2152	2	2	0	0	0	4

Course	Campus					Total
	NE	NW	SE	SO	TR	
DANC-2208	3	0	0	0	0	3
DANC-2303	54	9	79	0	143	285
DFTG-1305	0	0	0	28	0	28
DFTG-1325	0	0	0	54	0	54
DFTG-1409	0	0	0	36	0	36
DFTG-1491	0	0	0	10	0	10
DFTG-2402	0	0	0	17	0	17
DFTG-2438	0	0	0	8	0	8
DFTG-2440	0	0	0	18	0	18
DFTG-2458	0	0	0	11	0	11
DHYG-1207	23	0	0	0	0	23
DHYG-1215	21	0	0	0	0	21
DHYG-1235	21	0	0	0	0	21
DHYG-1239	21	0	0	0	0	21
DHYG-1301	23	0	0	0	0	23
DHYG-1311	21	0	0	0	0	21
DHYG-1327	23	0	0	0	0	23
DHYG-1431	23	0	0	0	0	23
DHYG-2360	21	0	0	0	0	21
DRAM-1120	4	13	24	4	0	45
DRAM-1121	9	3	10	3	0	25
DRAM-1161	7	0	0	0	0	7
DRAM-1310	110	121	322	30	260	843
DRAM-1320	6	0	0	0	0	6
DRAM-1330	12	0	12	0	0	24
DRAM-1351	11	30	51	39	24	155
DRAM-1352	12	3	25	14	13	67
DRAM-2120	13	0	0	2	0	15
DRAM-2121	4	0	0	0	0	4
DRAM-2331	2	0	0	0	0	2
DRAM-2351	4	7	0	0	7	18
DRAM-2366	53	51	68	149	57	378
ECON-2301	375	184	587	268	994	2408
ECON-2302	111	110	244	88	272	825
EDTC-1321	12	0	0	0	0	12
EDUC-1300	0	88	0	0	57	145
EDUC-1301	104	0	0	99	0	203
EDUC-1325	27	0	0	0	0	27
EDUC-2301	51	0	0	43	0	94
ELMT-2337	0	0	0	11	0	11
ELPT-2455	0	0	0	6	0	6
EMSP-1160	93	0	0	0	0	93
EMSP-1355	7	0	0	0	0	7
EMSP-1356	22	0	0	0	0	22
EMSP-1438	22	0	0	0	0	22
EMSP-1501	93	0	0	0	0	93
EMSP-2160	22	0	0	0	0	22
EMSP-2161	6	0	0	0	0	6
EMSP-2162	2	0	0	0	0	2
EMSP-2243	19	0	0	0	0	19

Course	Campus					Total
	NE	NW	SE	SO	TR	
EMSP-2338	2	0	0	0	0	2
EMSP-2430	2	0	0	0	0	2
EMSP-2444	8	0	0	0	0	8
EMSP-2534	10	0	0	0	0	10
ENGL-0011	3	0	0	0	0	3
ENGL-0324	266	237	251	205	106	1065
ENGL-1301	1417	1149	1853	1010	3709	9138
ENGL-1302	624	661	969	490	1992	4736
ENGL-2307	51	37	78	47	57	270
ENGL-2308	0	3	0	0	4	7
ENGL-2311	54	157	75	39	208	533
ENGL-2322	31	60	83	16	214	404
ENGL-2323	0	0	34	18	60	112
ENGL-2327	132	40	100	47	122	441
ENGL-2328	64	29	67	44	204	408
ENGL-2332	43	18	83	24	102	270
ENGL-2333	0	14	55	0	87	156
ENGL-2342	0	0	0	15	60	75
ENGL-2351	0	0	0	1	0	1
ENGR-1201	0	0	125	15	0	140
ENGR-1304	0	0	39	0	0	39
ENGR-2301	0	0	23	0	0	23
ENGR-2302	0	0	12	0	0	12
ENTC-2331	0	0	0	17	0	17
EPCT-1311	0	31	0	0	0	31
EPCT-1313	0	18	0	0	0	18
EPCT-1341	0	27	0	0	0	27
EPCT-1407	0	25	0	0	0	25
EPCT-1440	0	17	0	0	0	17
ESOL-0301	4	0	10	0	0	14
ESOL-0302	0	0	13	0	0	13
ESOL-0303	1	0	12	0	0	13
ESOL-0304	0	0	27	0	0	27
ESOL-0305	6	0	10	0	0	16
ESOL-0306	0	0	13	0	0	13
ESOL-0307	6	0	33	0	0	39
ESOL-0308	1	0	15	0	0	16
ESOL-0309	0	0	18	0	0	18
ESOL-0310	0	0	13	0	0	13
ESOL-0311	0	0	12	0	0	12
ESOL-0312	0	0	14	0	0	14
FDNS-1103	0	0	55	0	0	55
FDNS-1168	0	0	4	0	0	4
FDNS-1309	0	0	31	0	0	31
FDNS-1341	0	0	29	0	0	29
FDNS-1371	0	0	27	0	0	27
FDNS-1447	0	0	12	0	0	12
FDNS-2168	0	0	12	0	0	12
FDNS-2400	0	0	21	0	0	21
FIRS-1301	0	22	0	0	0	22

Course	Campus					Total
	NE	NW	SE	SO	TR	
FIRS-1313	0	22	0	0	0	22
FIRS-1319	0	22	0	0	0	22
FIRS-1323	0	22	0	0	0	22
FIRS-1329	0	22	0	0	0	22
FIRT-1301	0	28	0	0	0	28
FIRT-1307	0	30	0	0	0	30
FIRT-1311	0	26	0	0	0	26
FIRT-1338	0	22	0	0	0	22
FIRT-1349	0	11	0	0	0	11
FIRT-1433	0	12	0	0	0	12
FIRT-2309	0	7	0	0	0	7
FIRT-2331	0	2	0	0	0	2
FLMC-1311	11	0	0	0	0	11
FLMC-1404	20	0	0	0	0	20
FLMC-2434	23	0	0	0	0	23
FREN-1100	19	0	0	2	0	21
FREN-1411	62	0	23	69	0	154
FREN-1412	17	0	0	25	0	42
FREN-2311	45	0	0	0	0	45
FSHN-2309	31	0	0	0	0	31
GAME-1304	0	0	0	37	0	37
GAME-1314	0	0	0	9	0	9
GAME-1403	0	0	0	38	0	38
GAME-2308	0	0	0	6	0	6
GAME-2412	0	0	0	20	0	20
GEOG-1301	61	0	35	0	25	121
GEOG-1302	23	0	0	29	29	81
GEOG-1303	17	57	24	31	57	186
GEOL-1305	28	0	0	0	0	28
GEOL-1401	23	209	0	0	0	232
GEOL-1403	303	83	229	242	252	1109
GEOL-1404	50	14	96	41	71	272
GEOL-1405	0	24	0	9	0	33
GEOL-1445	24	18	0	0	0	42
GEOL-1447	0	0	22	0	0	22
GERM-1411	42	0	0	0	0	42
GERM-1412	14	0	0	0	0	14
GERM-2311	8	0	0	0	0	8
GERM-2312	6	0	0	0	0	6
GISC-1402	0	0	0	0	11	11
GISC-2264	0	0	0	0	1	1
GISC-2401	0	0	0	0	9	9
GISC-2411	0	0	0	0	16	16
GISC-2420	0	0	0	0	14	14
GOVT-2305	1343	842	1196	610	2132	6123
GOVT-2306	1034	723	911	493	968	4129
HALT-1301	0	46	0	0	0	46
HALT-1307	0	19	0	0	0	19
HALT-1317	0	20	0	0	0	20
HALT-1422	0	9	0	0	0	9

Course	Campus					Total
	NE	NW	SE	SO	TR	
HALT-2308	0	12	0	0	0	12
HALT-2315	0	15	0	0	0	15
HALT-2323	0	12	0	0	0	12
HAMG-1321	0	0	29	0	0	29
HAMG-1324	0	0	23	0	0	23
HAMG-1340	0	0	23	0	0	23
HAMG-2267	0	0	5	0	0	5
HAMG-2301	0	0	13	0	0	13
HAMG-2302	0	0	16	0	0	16
HAMG-2307	0	0	18	0	0	18
HAMG-2330	0	0	24	0	0	24
HART-1401	0	0	0	75	0	75
HART-1403	0	0	0	27	0	27
HART-1407	0	0	0	83	0	83
HART-1441	0	0	0	43	0	43
HART-1445	0	0	0	28	0	28
HART-2431	0	0	0	27	0	27
HART-2436	0	0	0	25	0	25
HART-2438	0	0	0	40	0	40
HART-2442	0	0	0	24	0	24
HART-2445	0	0	0	43	0	43
HART-2449	0	0	0	30	0	30
HECO-1307	76	0	0	0	0	76
HECO-1315	0	0	36	0	0	36
HECO-1322	135	0	395	41	0	571
HECO-2311	29	0	0	0	0	29
HIST-1301	1555	933	1161	659	2773	7081
HIST-1302	836	598	747	314	1039	3534
HIST-2301	38	0	31	49	122	240
HIST-2311	0	0	69	24	116	209
HIST-2321	41	18	38	20	99	216
HIST-2322	0	0	31	0	57	88
HIST-2323	0	0	19	0	0	19
HIST-2327	0	23	0	23	28	74
HIST-2328	0	0	0	0	28	28
HIST-2389	0	0	0	0	29	29
HITT-1253	0	0	0	0	19	19
HITT-1301	0	0	0	0	20	20
HITT-1345	0	0	0	0	22	22
HITT-2260	0	0	0	0	13	13
HITT-2443	0	0	0	0	23	23
HPRS-1206	0	0	0	0	208	208
HPRS-1271	0	0	0	0	21	21
HPRS-2200	41	0	0	0	100	141
HPRS-2201	0	0	0	0	191	191
HRPO-1311	13	0	17	86	0	116
HRPO-2301	0	0	28	84	0	112
HUMA-1301	0	332	0	0	110	442
HUMA-1305	0	0	0	24	0	24
HUMA-1315	15	73	28	16	55	187

Course	Campus					Total
	NE	NW	SE	SO	TR	
HYDR-1345	0	0	0	15	0	15
IBUS-1301	0	26	0	0	0	26
IBUS-1302	0	6	0	0	0	6
IFWA-2446	0	0	21	0	0	21
IMED-1316	17	0	0	0	0	17
INEW-2434	0	0	19	0	0	19
INRW-0399	133	237	289	227	168	1054
ITCC-1401	47	0	44	23	0	114
ITCC-1404	34	0	36	20	0	90
ITCC-2341	9	0	0	0	0	9
ITCC-2408	19	0	0	14	0	33
ITCC-2410	15	0	0	13	0	28
ITCC-2454	14	0	0	0	0	14
ITNW-1372	10	0	0	0	0	10
ITNW-1373	6	0	0	0	0	6
ITNW-1408	17	13	20	13	0	63
ITNW-1425	44	39	0	0	0	83
ITNW-1454	19	0	0	11	0	30
ITSC-1305	73	65	58	0	0	196
ITSC-1407	26	13	0	10	0	49
ITSC-1425	73	30	78	14	0	195
ITSC-1491	8	0	0	0	0	8
ITSE-1411	11	0	16	56	0	83
ITSE-1430	20	0	28	0	0	48
ITSE-1450	5	0	0	0	0	5
ITSE-2402	31	0	0	0	0	31
ITSE-2405	6	0	0	0	0	6
ITSE-2409	19	0	30	0	0	49
ITSE-2417	0	0	30	0	0	30
ITSW-1407	13	0	35	69	18	135
ITSY-1300	26	39	31	11	0	107
ITSY-2400	14	28	0	0	0	42
ITSY-2401	18	0	0	0	0	18
ITSY-2443	7	27	0	0	0	34
ITSY-2459	9	0	13	0	0	22
LBRA-1174	0	0	0	0	8	8
LBRA-1371	0	0	0	0	25	25
LBRA-1372	0	0	0	0	21	21
LBRA-1373	0	0	0	0	19	19
LBRA-1375	0	0	0	0	16	16
LGLA-1303	55	0	0	0	0	55
LGLA-1305	45	0	0	0	0	45
LGLA-1307	69	0	0	0	0	69
LGLA-1345	50	0	0	0	0	50
LGLA-1353	43	0	0	0	0	43
LGLA-1355	33	0	0	0	0	33
LGLA-2281	4	0	0	0	0	4
LGLA-2303	39	0	0	0	0	39
LGLA-2311	14	0	0	0	0	14
LGLA-2380	19	0	0	0	0	19

Course	Campus					Total
	NE	NW	SE	SO	TR	
LMGT-1319	0	22	0	0	0	22
LMGT-1323	0	27	0	0	0	27
LMGT-1325	0	7	0	0	0	7
LMGT-2334	0	7	0	0	0	7
LTCA-1311	0	0	0	0	29	29
LTCA-1312	0	0	0	0	27	27
LTCA-1313	0	0	0	0	24	24
LTCA-2314	0	0	0	0	24	24
LTCA-2315	0	0	0	0	24	24
LTCA-2660	0	0	0	0	4	4
LTCA-2661	0	0	0	0	3	3
MATH-0114	250	0	0	0	0	250
MATH-0115	265	0	0	0	0	265
MATH-0116	281	0	0	0	0	281
MATH-0117	70	0	0	0	0	70
MATH-0118	53	0	0	0	0	53
MATH-0119	39	0	0	0	0	39
MATH-0361	587	622	779	760	416	3164
MATH-0362	404	462	703	454	351	2374
MATH-1314	1187	1157	1786	843	1320	6293
MATH-1316	46	39	62	45	128	320
MATH-1324	137	125	190	81	67	600
MATH-1325	93	78	131	86	25	413
MATH-1332	92	30	47	20	145	334
MATH-1342	190	264	504	247	638	1843
MATH-1350	34	34	50	57	25	200
MATH-1351	14	17	36	20	0	87
MATH-2318	0	0	0	8	0	8
MATH-2320	5	0	0	0	0	5
MATH-2412	143	83	206	122	87	641
MATH-2413	74	90	140	100	93	497
MATH-2414	41	49	64	62	10	226
MATH-2415	10	48	32	22	0	112
MATH-2421	7	0	0	0	0	7
MCHN-2403	0	0	0	21	0	21
MILI-0041	0	0	0	2	0	2
MILI-0042	0	0	0	1	0	1
MILI-0080	0	0	0	9	0	9
MILI-1001	0	0	0	3	0	3
MILI-1041	0	0	0	6	0	6
MILI-2051	0	0	0	3	0	3
MRKG-1302	0	0	0	0	84	84
MRKG-1311	34	0	58	83	81	256
MRKG-2333	0	0	28	0	80	108
MRKG-2348	0	0	0	0	29	29
MRKG-2349	0	0	0	0	50	50
MUAP-1190	41	6	14	7	0	68
MUAP-1191	4	16	1	4	0	25
MUAP-1290	34	15	28	17	0	94
MUAP-1291	24	17	7	5	0	53

Course	Campus					Total
	NE	NW	SE	SO	TR	
MUAP-1292	6	0	4	0	0	10
MUAP-2291	2	0	0	0	0	2
MUAP-2292	1	0	0	0	0	1
MUEN-1121	0	17	0	20	0	37
MUEN-1122	19	0	17	0	0	36
MUEN-1132	15	0	0	0	0	15
MUEN-1133	10	0	14	0	0	24
MUEN-1141	37	0	13	0	0	50
MUEN-1142	0	22	0	0	0	22
MUSI-1163	9	0	11	0	0	20
MUSI-1164	6	0	0	0	0	6
MUSI-1181	33	10	37	28	0	108
MUSI-1182	0	0	4	5	0	9
MUSI-1183	0	0	0	12	0	12
MUSI-1192	15	0	0	0	0	15
MUSI-1211	25	14	0	16	0	55
MUSI-1216	18	8	0	16	0	42
MUSI-1301	7	12	46	67	0	132
MUSI-1304	14	0	0	0	0	14
MUSI-1306	603	163	352	147	460	1725
MUSI-1307	0	0	0	0	23	23
MUSI-1310	0	0	0	0	75	75
MUSI-1390	16	16	27	18	0	77
MUSI-1391	0	0	0	2	0	2
MUSI-2211	16	6	0	0	0	22
MUSI-2216	14	4	0	0	0	18
OSHT-1305	0	24	0	0	0	24
OSHT-1313	0	24	0	0	0	24
OSHT-2388	0	3	0	0	0	3
PHED-1101	0	0	24	15	0	39
PHED-1102	21	81	13	1	0	116
PHED-1103	0	0	15	11	0	26
PHED-1104	0	16	15	17	0	48
PHED-1105	0	24	0	0	0	24
PHED-1107	33	0	29	0	23	85
PHED-1109	0	0	0	16	0	16
PHED-1111	11	0	0	0	0	11
PHED-1112	0	0	0	12	0	12
PHED-1113	64	73	22	44	0	203
PHED-1117	0	11	0	0	0	11
PHED-1119	0	24	0	0	0	24
PHED-1121	3	0	16	0	0	19
PHED-1122	19	20	0	10	0	49
PHED-1124	0	0	0	9	0	9
PHED-1125	4	0	0	0	0	4
PHED-1128	7	8	12	18	0	45
PHED-1129	13	0	0	0	27	40
PHED-1131	14	0	0	0	0	14
PHED-1132	0	0	0	3	0	3
PHED-1133	61	48	90	28	0	227

Course	Campus					Total
	NE	NW	SE	SO	TR	
PHED-1134	80	82	61	44	15	282
PHED-1148	50	0	34	26	17	127
PHED-1164	710	625	626	361	1038	3360
PHED-1304	0	0	0	0	44	44
PHED-1306	0	39	0	36	91	166
PHED-1308	0	0	0	17	0	17
PHED-1338	0	21	25	18	0	64
PHED-2101	0	0	8	1	0	9
PHED-2102	3	6	1	0	0	10
PHED-2103	0	0	9	7	0	16
PHED-2104	0	1	1	1	0	3
PHED-2106	0	0	0	9	0	9
PHED-2107	6	0	2	0	9	17
PHED-2111	5	0	0	0	0	5
PHED-2112	0	0	0	1	0	1
PHED-2113	8	16	3	9	0	36
PHED-2117	0	2	0	0	0	2
PHED-2121	1	0	2	0	0	3
PHED-2122	7	2	0	3	0	12
PHED-2125	4	0	0	0	0	4
PHED-2128	3	9	4	4	0	20
PHED-2129	2	0	0	0	0	2
PHED-2131	1	0	0	0	0	1
PHED-2132	0	0	0	4	0	4
PHED-2133	25	15	25	9	0	74
PHED-2134	21	7	9	8	8	53
PHED-2148	8	0	5	6	9	28
PHIL-1301	497	309	226	213	254	1499
PHIL-1304	41	115	38	94	203	491
PHIL-1316	14	0	0	0	0	14
PHIL-2303	23	29	26	0	86	164
PHIL-2306	41	58	74	45	121	339
PHIL-2316	15	0	15	16	0	46
PHTC-1300	30	0	0	0	0	30
PHTC-1353	12	0	0	0	0	12
PHTC-2343	3	0	0	0	0	3
PHTC-2349	1	0	0	0	0	1
PHYS-1401	53	27	71	52	22	225
PHYS-1402	22	0	21	0	0	43
PHYS-1403	69	29	24	0	0	122
PHYS-1404	23	0	0	49	0	72
PHYS-1405	10	0	0	0	0	10
PHYS-1415	37	24	0	12	0	73
PHYS-2425	49	21	70	29	0	169
PHYS-2426	11	0	48	0	0	59
POFI-1449	0	0	0	88	0	88
POFI-2401	0	0	0	57	0	57
POFI-2431	0	0	0	27	0	27
POFT-1127	0	0	0	65	0	65
POFT-1309	0	0	0	52	0	52

Course	Campus					Total
	NE	NW	SE	SO	TR	
POFT-1319	0	0	0	59	0	59
POFT-1321	0	0	0	39	30	69
POFT-1329	0	0	0	80	0	80
POFT-1331	0	0	0	23	0	23
POFT-2301	0	0	0	31	0	31
POFT-2312	0	0	0	61	0	61
PSTR-1401	0	0	36	0	0	36
PSYC-1300	42	0	20	37	0	99
PSYC-2301	1097	566	846	610	1263	4382
PSYC-2306	69	87	38	23	57	274
PSYC-2308	59	29	34	0	59	181
PSYC-2314	122	117	268	92	299	898
PSYC-2315	123	32	20	79	90	344
PSYC-2316	0	26	0	0	26	52
PSYC-2319	0	37	28	0	86	151
PSYT-1313	25	0	0	0	0	25
PSYT-2339	30	0	0	0	0	30
PSYT-2345	30	0	0	0	0	30
PTHA-1201	0	0	0	0	31	31
PTHA-1321	0	0	0	0	31	31
PTHA-1431	0	0	0	0	32	32
PTHA-2260	0	0	0	0	32	32
PTHA-2261	0	0	0	0	32	32
PTHA-2409	0	0	0	0	32	32
PTHA-2431	0	0	0	0	32	32
PTRT-1307	0	0	0	13	0	13
PTRT-1313	0	0	0	10	0	10
PTRT-1317	0	0	0	13	0	13
RADR-1266	0	0	0	0	23	23
RADR-1313	0	0	0	0	23	23
RADR-2301	0	0	0	0	23	23
RADR-2309	0	0	0	0	19	19
RADR-2333	0	0	0	0	19	19
RADR-2366	0	0	0	0	19	19
RBTC-1401	0	0	0	37	0	37
RBTC-1447	0	0	0	20	0	20
RDNG-0361	239	186	266	208	112	1011
RELE-1300	33	0	0	0	0	33
RELE-1303	28	0	0	0	0	28
RELE-1307	32	0	0	0	0	32
RELE-1311	55	0	0	0	0	55
RELE-1315	11	0	0	0	0	11
RELE-1319	56	0	0	0	0	56
RELE-1406	78	0	0	0	0	78
RELE-2301	29	0	0	0	0	29
RNSG-1105	0	0	0	0	149	149
RNSG-1193	0	0	0	0	139	139
RNSG-1293	0	0	0	0	101	101
RNSG-1413	0	0	0	0	149	149
RNSG-1441	0	0	0	0	145	145

Course	Campus					Total
	NE	NW	SE	SO	TR	
RNSG-1443	0	0	0	0	101	101
RNSG-1460	0	0	0	0	149	149
RNSG-1461	0	0	0	0	145	145
RNSG-2201	0	0	0	0	129	129
RNSG-2208	0	0	0	0	116	116
RNSG-2260	0	0	0	0	116	116
RNSG-2261	0	0	0	0	129	129
RNSG-2461	0	0	0	0	101	101
RSPT-1101	0	0	0	0	25	25
RSPT-1166	0	0	0	0	25	25
RSPT-1429	0	0	0	0	25	25
RSPT-2133	0	0	0	0	21	21
RSPT-2210	0	0	0	0	21	21
RSPT-2266	0	0	0	0	21	21
RSPT-2405	0	0	0	0	21	21
RSTO-1304	0	0	20	0	0	20
RSTO-1325	0	0	47	0	0	47
RTVB-1150	19	0	0	0	0	19
RTVB-1402	38	0	0	0	0	38
RTVB-1409	37	0	0	0	0	37
RTVB-1425	46	0	0	0	0	46
RTVB-2265	1	0	0	0	0	1
RTVB-2347	23	0	0	0	0	23
RTVB-2487	3	0	0	0	0	3
SCWK-2305	29	0	0	0	0	29
SLNG-1211	0	0	0	0	27	27
SLNG-1347	0	0	0	0	59	59
SLNG-1350	0	0	0	0	27	27
SLNG-1404	0	0	0	0	82	82
SLNG-1405	0	0	0	0	37	37
SLNG-1444	0	0	0	0	47	47
SLNG-2166	0	0	0	0	25	25
SLNG-2331	0	0	0	0	27	27
SLPS-1371	0	29	0	0	0	29
SLPS-1391	0	55	0	0	0	55
SLPS-2371	0	30	0	0	0	30
SOCI-1301	556	447	715	142	985	2845
SOCI-1306	58	0	38	0	106	202
SOCI-2301	0	23	33	0	55	111
SOCI-2326	0	17	0	0	0	17
SOCI-2336	25	0	29	0	0	54
SOCW-2361	27	25	38	0	0	90
SOCW-2362	18	0	0	0	0	18
SPAN-1411	356	180	260	193	93	1082
SPAN-1412	104	46	83	35	21	289
SPAN-2311	84	118	21	93	35	351
SPAN-2312	20	0	12	22	0	54
SPCH-1144	11	0	0	0	0	11
SPCH-1311	1016	863	1066	502	931	4378
SPCH-1315	213	49	24	0	106	392

Course	Campus					Total
	NE	NW	SE	SO	TR	
SPCH-1318	55	0	0	0	115	170
SPCH-1321	444	178	324	228	316	1490
SPCH-2144	2	0	0	0	0	2
SPCH-2333	0	0	0	0	26	26
SPCH-2341	4	0	0	0	0	4
SRGT-1266	0	0	0	0	30	30
SRGT-1405	0	0	0	0	30	30
SRGT-1409	0	0	0	0	30	30
SRVY-1301	0	0	0	17	0	17
STSC-0111	1010	874	1400	988	565	4837
TECA-1303	26	0	0	15	0	41
TECA-1311	28	0	0	0	0	28
TECA-1318	29	0	0	0	0	29
TECA-1354	83	0	0	50	0	133
TECM-1303	0	0	0	41	0	41
WLDG-1417	0	0	0	48	0	48
WLDG-1428	0	0	0	63	0	63
WLDG-1430	0	0	0	60	0	60
WLDG-1434	0	0	0	48	0	48
TOTAL	32709	24022	30440	20485	35344	143000

Section V

IPEDS Race & Ethnicity Data

Section V contains race/ethnicity data of a format similar to earlier Statistical Handbooks. For Tables 14 through 19, the race/ethnicity Hispanic was defined as anyone with the *Colleague* field of Ethnics (see Tables 3 to 8) equal to Hispanic/Latino, except International . Tables 3 through 8 in Section II contain the raw data for the categories of race and ethnicity. The data in this section may not be the correct categories for all applications (e.g. grant proposals).

LIMITATIONS OF STATISTICAL HANDBOOK DATA

Section V contains data on TCCD credit students for Fall 2014 (does not include Continuing Education students). This section is based on data from the *Colleague* system. Minor differences are to be expected between *Colleague* reports that are run at different times; thus, this data may vary slightly from other *Colleague* reports.

Minor differences are to be expected between the data in this section and the certified state reports.

Table 14. 2014FL Race/Ethnicity by Gender TCCD District

This page contains ethnicity data of a format similar to previous Statistical Handbooks. For this table, the race Hispanic was defined as anyone with the Colleague field of Ethnic equal to Hispanic/Latino. The data in this table may not be the correct categories for all applications (e.g. grant proposals).

Race/Ethnicity		Gender		Total
		Female	Male	
White	Count	11850	9336	21186
	% within Race	55.9%	44.1%	100.0%
	% within Gender	40.2%	44.1%	41.8%
Black/African American	Count	5937	3483	9420
	% within Race	63.0%	37.0%	100.0%
	% within Gender	20.2%	16.4%	18.6%
Hispanic Latino	Count	8738	5899	14637
	% within Race	59.7%	40.3%	100.0%
	% within Gender	29.7%	27.8%	28.9%
Asian	Count	1523	1429	2952
	% within Race	51.6%	48.4%	100.0%
	% within Gender	5.2%	6.7%	5.8%
American Indian/ Alaska Native	Count	141	90	231
	% within Race	61.0%	39.0%	100.0%
	% within Gender	0.5%	0.4%	0.5%
International	Count	222	184	406
	% within Race	54.7%	45.3%	100.0%
	% within Gender	0.8%	0.9%	0.8%
Unknown/Not Reported	Count	345	271	616
	% within Race	56.0%	44.0%	100.0%
	% within Gender	1.2%	1.3%	1.2%
Native Hawaiian/ Pacific Islander	Count	61	46	107
	% within Race	57.0%	43.0%	100.0%
	% within Gender	0.2%	0.2%	0.2%
Multiracial	Count	627	446	1073
	% within Race	58.4%	41.6%	100.0%
	% within Gender	2.1%	2.1%	2.1%
Total	Count	29444	21184	50628
	% within Race	58.2%	41.8%	100.0%
	% within Gender	100.0%	100.0%	100.0%

Table 15. 2014FL Race/Ethnicity by Gender SO Campus

This page contains ethnicity data of a format similar to previous Statistical Handbooks. For this table, the race Hispanic was defined as anyone with the Colleague field of Ethnicity equal to Hispanic/Latino. The data in this table may not be the correct categories for all applications (e.g. grant proposals).

Race/Ethnicity		Gender		Total
		Female	Male	
White	Count	1746	1581	3327
	% within Race	52.5%	47.5%	100.0%
	% within Gender	32.3%	37.9%	34.8%
Black/African American	Count	1587	921	2508
	% within Race	63.3%	36.7%	100.0%
	% within Gender	29.4%	22.1%	26.2%
Hispanic Latino	Count	1680	1290	2970
	% within Race	56.6%	43.4%	100.0%
	% within Gender	31.1%	30.9%	31.0%
Asian	Count	174	187	361
	% within Race	48.2%	51.8%	100.0%
	% within Gender	3.2%	4.5%	3.8%
American Indian/ Alaska Native	Count	22	10	32
	% within Race	68.8%	31.3%	100.0%
	% within Gender	0.4%	0.2%	0.3%
International	Count	28	33	61
	% within Race	45.9%	54.1%	100.0%
	% within Gender	0.5%	0.8%	0.6%
Unknown/Not Reported	Count	60	59	119
	% within Race	50.4%	49.6%	100.0%
	% within Gender	1.1%	1.4%	1.2%
Native Hawaiian/ Pacific Islander	Count	7	10	17
	% within Race	41.2%	58.8%	100.0%
	% within Gender	0.1%	0.2%	0.2%
Multiracial	Count	98	81	179
	% within Race	54.7%	45.3%	100.0%
	% within Gender	1.8%	1.9%	1.9%
Total	Count	5402	4172	9574
	% within Race	56.4%	43.6%	100.0%
	% within Gender	100.0%	100.0%	100.0%

Table 16. 2014FL Race/Ethnicity by Gender NE Campus

This page contains ethnicity data of a format similar to previous Statistical Handbooks. For this table, the race Hispanic was defined as anyone with the Colleague field of Ethnic equal to Hispanic/Latino. The data in this table may not be the correct categories for all applications (e.g. grant proposals).

Race/Ethnicity		Gender		Total
		Female	Male	
White	Count	3691	2991	6682
	% within Race	55.2%	44.8%	100.0%
	% within Gender	47.5%	52.0%	49.4%
Black/African American	Count	1366	859	2225
	% within Race	61.4%	38.6%	100.0%
	% within Gender	17.6%	14.9%	16.4%
Hispanic Latino	Count	1878	1256	3134
	% within Race	59.9%	40.1%	100.0%
	% within Gender	24.2%	21.8%	23.2%
Asian	Count	430	364	794
	% within Race	54.2%	45.8%	100.0%
	% within Gender	5.5%	6.3%	5.9%
American Indian/ Alaska Native	Count	51	26	77
	% within Race	66.2%	33.8%	100.0%
	% within Gender	0.7%	0.5%	0.6%
International	Count	60	43	103
	% within Race	58.3%	41.7%	100.0%
	% within Gender	0.8%	0.7%	0.8%
Unknown/Not Reported	Count	101	70	171
	% within Race	59.1%	40.9%	100.0%
	% within Gender	1.3%	1.2%	1.3%
Native Hawaiian/ Pacific Islander	Count	25	17	42
	% within Race	59.5%	40.5%	100.0%
	% within Gender	0.3%	0.3%	0.3%
Multiracial	Count	171	131	302
	% within Race	56.6%	43.4%	100.0%
	% within Gender	2.2%	2.3%	2.2%
Total	Count	7773	5757	13530
	% within Race	57.5%	42.5%	100.0%
	% within Gender	100.0%	100.0%	100.0%

Table 17. 2014FL Race/Ethnicity by Gender NW Campus

This page contains ethnicity data of a format similar to previous Statistical Handbooks. For this table, the race Hispanic was defined as anyone with the Colleague field of Ethnic equal to Hispanic/Latino. The data in this table may not be the correct categories for all applications (e.g. grant proposals).

Race/Ethnicity		Gender		Total
		Female	Male	
White	Count	2522	2209	4731
	% within Race	53.3%	46.7%	100.0%
	% within Gender	43.8%	48.1%	45.7%
Black/African American	Count	780	525	1305
	% within Race	59.8%	40.2%	100.0%
	% within Gender	13.5%	11.4%	12.6%
Hispanic Latino	Count	1978	1420	3398
	% within Race	58.2%	41.8%	100.0%
	% within Gender	34.3%	30.9%	32.8%
Asian	Count	219	235	454
	% within Race	48.2%	51.8%	100.0%
	% within Gender	3.8%	5.1%	4.4%
American Indian/ Alaska Native	Count	33	20	53
	% within Race	62.3%	37.7%	100.0%
	% within Gender	0.6%	0.4%	0.5%
International	Count	39	26	65
	% within Race	60.0%	40.0%	100.0%
	% within Gender	0.7%	0.6%	0.6%
Unknown/Not Reported	Count	52	51	103
	% within Race	50.5%	49.5%	100.0%
	% within Gender	0.9%	1.1%	1.0%
Native Hawaiian/ Pacific Islander	Count	9	7	16
	% within Race	56.3%	43.8%	100.0%
	% within Gender	0.2%	0.2%	0.2%
Multiracial	Count	130	97	227
	% within Race	57.3%	42.7%	100.0%
	% within Gender	2.3%	2.1%	2.2%
Total	Count	5762	4590	10352
	% within Race	55.7%	44.3%	100.0%
	% within Gender	100.0%	100.0%	100.0%

Table 18. 2014FL Race/Ethnicity by Gender SE Campus

This page contains ethnicity data of a format similar to previous Statistical Handbooks. For this table, the race Hispanic was defined as anyone with the Colleague field of Ethnic equal to Hispanic/Latino. The data in this table may not be the correct categories for all applications (e.g. grant proposals).

Race/Ethnicity		Gender		Total
		Female	Male	
White	Count	2047	1727	3774
	% within Race	54.2%	45.8%	100.0%
	% within Gender	29.0%	33.3%	30.8%
Black/African American	Count	2055	1221	3276
	% within Race	62.7%	37.3%	100.0%
	% within Gender	29.1%	23.5%	26.8%
Hispanic Latino	Count	2038	1383	3421
	% within Race	59.6%	40.4%	100.0%
	% within Gender	28.9%	26.6%	27.9%
Asian	Count	542	559	1101
	% within Race	49.2%	50.8%	100.0%
	% within Gender	7.7%	10.8%	9.0%
American Indian/ Alaska Native	Count	32	23	55
	% within Race	58.2%	41.8%	100.0%
	% within Gender	0.5%	0.4%	0.4%
International	Count	83	96	179
	% within Race	46.4%	53.6%	100.0%
	% within Gender	1.2%	1.8%	1.5%
Unknown/Not Reported	Count	86	58	144
	% within Race	59.7%	40.3%	100.0%
	% within Gender	1.2%	1.1%	1.2%
Native Hawaiian/ Pacific Islander	Count	14	9	23
	% within Race	60.9%	39.1%	100.0%
	% within Gender	0.2%	0.2%	0.2%
Multiracial	Count	153	117	270
	% within Race	56.7%	43.3%	100.0%
	% within Gender	2.2%	2.3%	2.2%
Total	Count	7050	5193	12243
	% within Race	57.6%	42.4%	100.0%
	% within Gender	100.0%	100.0%	100.0%

Table 19. 2014FL Race/Ethnicity by Gender TR Campus

This page contains ethnicity data of a format similar to previous Statistical Handbooks. For this table, the race Hispanic was defined as anyone with the Colleague field of Ethnic equal to Hispanic/Latino. The data in this table may not be the correct categories for all applications (e.g. grant proposals).

Race/Ethnicity		Gender		Total
		Female	Male	
White	Count	5382	2926	8308
	% within Race	64.8%	35.2%	100.0%
	% within Gender	44.7%	47.0%	45.5%
Black/African American	Count	2255	897	3152
	% within Race	71.5%	28.5%	100.0%
	% within Gender	18.7%	14.4%	17.3%
Hispanic Latino	Count	3316	1716	5032
	% within Race	65.9%	34.1%	100.0%
	% within Gender	27.5%	27.6%	27.6%
Asian	Count	565	402	967
	% within Race	58.4%	41.6%	100.0%
	% within Gender	4.7%	6.5%	5.3%
American Indian/ Alaska Native	Count	51	24	75
	% within Race	68.0%	32.0%	100.0%
	% within Gender	0.4%	0.4%	0.4%
International	Count	63	42	105
	% within Race	60.0%	40.0%	100.0%
	% within Gender	0.5%	0.7%	0.6%
Unknown/Not Reported	Count	130	80	210
	% within Race	61.9%	38.1%	100.0%
	% within Gender	1.1%	1.3%	1.1%
Native Hawaiian/ Pacific Islander	Count	19	14	33
	% within Race	57.6%	42.4%	100.0%
	% within Gender	0.2%	0.2%	0.2%
Multiracial	Count	257	124	381
	% within Race	67.5%	32.5%	100.0%
	% within Gender	2.1%	2.0%	2.1%
Total	Count	12038	6225	18263
	% within Race	65.9%	34.1%	100.0%
	% within Gender	100.0%	100.0%	100.0%

Section VI

Other Student & Enrollment Data

LIMITATIONS OF STATISTICAL HANDBOOK DATA

Section VI contains data on TCCD credit students for Fall 2014 (does not include Continuing Education students). This section is based on data from the *Colleague* system. Minor differences are to be expected between *Colleague* reports that are run at different times; thus, this data may vary slightly from other *Colleague* reports.

Minor differences are to be expected between the data in this section and the certified state reports.

Table 20a. 2014FL Developmental Education Courses by Campus

Course	Campus					Total
	NE	NW	SE	SO	TR	
ENGL-0324	266	237	251	205	106	1065
ESOL-0301	4	0	10	0	0	14
ESOL-0302	0	0	13	0	0	13
ESOL-0303	1	0	12	0	0	13
ESOL-0304	0	0	27	0	0	27
ESOL-0305	6	0	10	0	0	16
ESOL-0306	0	0	13	0	0	13
ESOL-0307	6	0	33	0	0	39
ESOL-0308	1	0	15	0	0	16
ESOL-0309	0	0	18	0	0	18
ESOL-0310	0	0	13	0	0	13
ESOL-0311	0	0	12	0	0	12
ESOL-0312	0	0	14	0	0	14
INRW-0399	133	237	289	227	168	1054
MATH-0114	250	0	0	0	0	250
MATH-0115	265	0	0	0	0	265
MATH-0116	281	0	0	0	0	281
MATH-0117	70	0	0	0	0	70
MATH-0118	53	0	0	0	0	53
MATH-0119	39	0	0	0	0	39
MATH-0361	587	622	779	760	416	3164
MATH-0362	404	462	703	454	351	2374
RDNG-0361	239	186	266	208	112	1011
STSC-0111	1010	874	1400	988	565	4837
Total	3615	2618	3878	2842	1718	14671

Table 20b. 2014FL Dev. Education Unduplicated Headcount by Campus

Campus		Developmental Education
NE	Count	2088
	% within Dev. Education	22.0%
NW	Count	1825
	% within Dev. Education	19.2%
SE	Count	2500
	% within Dev. Education	26.3%
SO	Count	1894
	% within Dev. Education	19.9%
TR	Count	1205
	% within Dev. Education	12.7%
Total	Count	9512
	% within Dev. Education	100.0%

For TCCD district as a whole, there were 9,078 unduplicated students taking developmental education for 2014FL.

Tables 21a and 21b contain enrollments/headcount in either the Dual Credit Program or the Early High School Enrollment Program or both.

Table 21a. 2014FL Dual Credit Enrollments by Campus

Campus		Dual Credit
NE	Count	429
	% within Dual Credit	4.0%
NW	Count	1241
	% within Dual Credit	11.7%
SE	Count	398
	% within Dual Credit	3.8%
SO	Count	589
	% within Dual Credit	5.6%
TR	Count	7952
	% within Dual Credit	75.0%
Total	Count	10609
	% within Dual Credit	100.0%

Table 21b. 2014FL Dual Credit Unduplicated Headcount by Campus

Campus		Dual Credit
NE	Count	239
	% within Dual Credit	4.2%
NW	Count	449
	% within Dual Credit	7.8%
SE	Count	206
	% within Dual Credit	3.6%
SO	Count	272
	% within Dual Credit	4.8%
TR	Count	4557
	% within Dual Credit	79.6%
Total	Count	5723
	% within Dual Credit	100.0%

For TCCD as a whole, there were 5,653 unduplicated students taking dual credit for 2014FL.

Table 22a. 2014FL Distance Learning Enrollments by Campus

Campus		Instructional Method			Total
		CDI	CDL	LA1	
NE	Count	2031	0	0	2031
	% within Instructional Method	9.7%	0.0%	0.0%	9.7%
NW	Count	2252	0	0	2252
	% within Instructional Method	10.8%	0.0%	0.0%	10.8%
SE	Count	1575	0	0	1575
	% within Instructional Method	7.5%	0.0%	0.0%	7.5%
SO	Count	2327	0	0	2327
	% within Instructional Method	11.1%	0.0%	0.0%	11.1%
TR	Count	12703	19	12	12734
	% within Instructional Method	60.8%	100.0%	100.0%	60.9%
Total	Count	20888	19	12	20919
	% within Instructional Method	100.0%	100.0%	100.0%	100.0%

Table 22b. 2014FL Distance Learning Unduplicated Headcount by Campus

Campus		Distance Learning
NE	Count	1776
	% within Distance Learning	11.7%
NW	Count	1848
	% within Distance Learning	12.2%
SE	Count	1448
	% within Distance Learning	9.5%
SO	Count	1904
	% within Distance Learning	12.5%
TR	Count	8202
	% within Distance Learning	54.0%
Total	Count	15178
	% within Distance Learning	100.0%

For TCCD district as a whole, there were 11,392 unduplicated students taking distance learning for 2014FL.

Table 23. 2014FL Percentage of Sections Taught by Adjunct & Full-time Faculty

Sections listed for: 2014FL

Campus	Total Sections	Sections Taught by Adjunct	Sections Taught by Full-time	% of Sections Taught by Adjunct	% of Sections Taught by Full-time
District	7,384	3,369	4,015	45.63%	54.37%
Northeast	2,058	832	1,226	40.43%	59.57%
Northwest	1,269	557	712	43.89%	56.11%
Southeast	1,339	589	750	43.99%	56.01%
South	1,153	515	638	44.67%	55.33%
Trinity River	1,565	876	689	55.97%	44.03%

Notes: This report was run on the *Colleague* system using the semester as defined by the *Colleague* field Term.

This report may differ from other *Colleague* reports with different run time/dates. The data in Table 23 is based on an XPAF run made 9/11/2014.

Table 24. Ratio Comparison of 2014FL data to 2013FL data

TERM: 2013FL CREDIT STUDENTS - ALL ENROLLMENTS				
<i>9/12/2013 excludes NSOR</i>				
CAMPUS	HEADCOUNT	NUMBER OF ENROLLMENTS	CONTACT HOURS	SEMESTER HOURS
Northeast	16,572	41,444	2,113,344	113,510
Northwest	13,755	31,685	1,610,648	88,197
Southeast	15,217	37,819	1,851,864	103,012
South	12,807	28,396	1,476,360	79,967
Trinity River	8,849	20,476	1,107,232	56,243
TOTAL	67,200	159,820	8,159,448	440,929
TCCD (Undupl)	50,765			

TERM: 2014FL CREDIT STUDENTS - ALL ENROLLMENTS				
<i>9/11/2014 excludes NSOR</i>				
CAMPUS	HEADCOUNT	NUMBER OF ENROLLMENTS	CONTACT HOURS	SEMESTER HOURS
Northeast	13,530	36,374	1,833,552	96,119
Northwest	10,352	26,239	1,336,544	70,378
Southeast	12,243	33,574	1,652,584	90,286
South	9,574	22,299	1,193,576	61,922
Trinity River	18,263	36,944	1,893,056	103,697
TOTAL	63,962	155,430	7,909,312	422,402
TCCD (Undupl)	50,628			

2014FL/2013FL RATIOS				
CAMPUS	HEADCOUNT	NUMBER OF ENROLLMENTS	CONTACT HOURS	SEMESTER HOURS
Northeast	0.816	0.878	0.868	0.847
Northwest	0.753	0.828	0.830	0.798
Southeast	0.805	0.888	0.892	0.876
South	0.748	0.785	0.808	0.774
Trinity River	2.064	1.804	1.710	1.844
TOTAL	0.952	0.973	0.969	0.958
TCCD (Undupl)	0.997			

PERCENT INCREASE/DECREASE				
CAMPUS	HEADCOUNT	NUMBER OF ENROLLMENTS	CONTACT HOURS	SEMESTER HOURS
Northeast	-18.4%	-12.2%	-13.2%	-15.3%
Northwest	-24.7%	-17.2%	-17.0%	-20.2%
Southeast	-19.5%	-11.2%	-10.8%	-12.4%
South	-25.2%	-21.5%	-19.2%	-22.6%
Trinity River	106.4%	80.4%	71.0%	84.4%
TOTAL	-4.8%	-2.7%	-3.1%	-4.2%
TCCD (Undupl)	-0.3%			

Table 25a. 2014FL Weekend College Enrollments by Campus

Campus	Instructional Method											Total	
		BB1	BL1	CA1	CL1	HB1	HL1	IN1	LA1	LE1	PR1		
NE	Count	0	14	220	45	0	0	0	3	310	2158	1	2751
	% within Instructional Method	0.0%	22.6%	72.6%	13.9%	0.0%	0.0%	0.0%	100.0%	30.4%	24.8%	100.0%	25.5%
NW	Count	62	24	59	124	0	0	0	0	220	2706	0	3195
	% within Instructional Method	36.7%	38.7%	19.5%	38.4%	0.0%	0.0%	0.0%	0.0%	21.5%	31.1%	0.0%	29.6%
SE	Count	0	0	0	0	0	0	0	0	162	1423	0	1585
	% within Instructional Method	0.0%	0.0%	0.0%	0.0%	0.0%	0.0%	0.0%	0.0%	15.9%	16.3%	0.0%	14.7%
SO	Count	60	0	0	130	0	13	20	0	189	1166	0	1578
	% within Instructional Method	35.5%	0.0%	0.0%	40.2%	0.0%	100.0%	12.1%	0.0%	18.5%	13.4%	0.0%	14.6%
TR	Count	47	24	24	24	14	0	145	0	140	1260	0	1678
	% within Instructional Method	27.8%	38.7%	7.9%	7.4%	100.0%	0.0%	87.9%	0.0%	13.7%	14.5%	0.0%	15.6%
Total	Count	169	62	303	323	14	13	165	3	1021	8713	1	10787
	% within Instructional Method	100.0%	100.0%	100.0%	100.0%	100.0%	100.0%	100.0%	100.0%	100.0%	100.0%	100.0%	100.0%

Table 25b. 2014FL Weekend College Unduplicated Headcount by Campus

Campus		Weekend College
NE	Count	2122
	% within Weekend College	25.7%
NW	Count	2379
	% within Weekend College	28.8%
SE	Count	1284
	% within Weekend College	15.6%
SO	Count	1252
	% within Weekend College	15.2%
TR	Count	1211
	% within Weekend College	14.7%
Total	Count	8248
	% within Weekend College	100.0%

For TCCD district as a whole, there were 7,836 unduplicated students taking weekend college courses for 2014FL.

Table 26. 2014FL TCC Connect Enrollments

There were 17,308 enrollments in TCC Connect for 2014FL by 7,439 unduplicated students.

TCC Connect	
# of Enrollments	17308
Sum Semester Hours	50807
Sum Contact Hours	833424

These 17,308 course enrollments for 2014FL were distributed as follows:

TCC Connect	# of Enrollments
Dual Credit	5378
DLRNG	11738
WKEND	192
Total	17308

The source of this data is a Discoverer query run 9/11/2014.