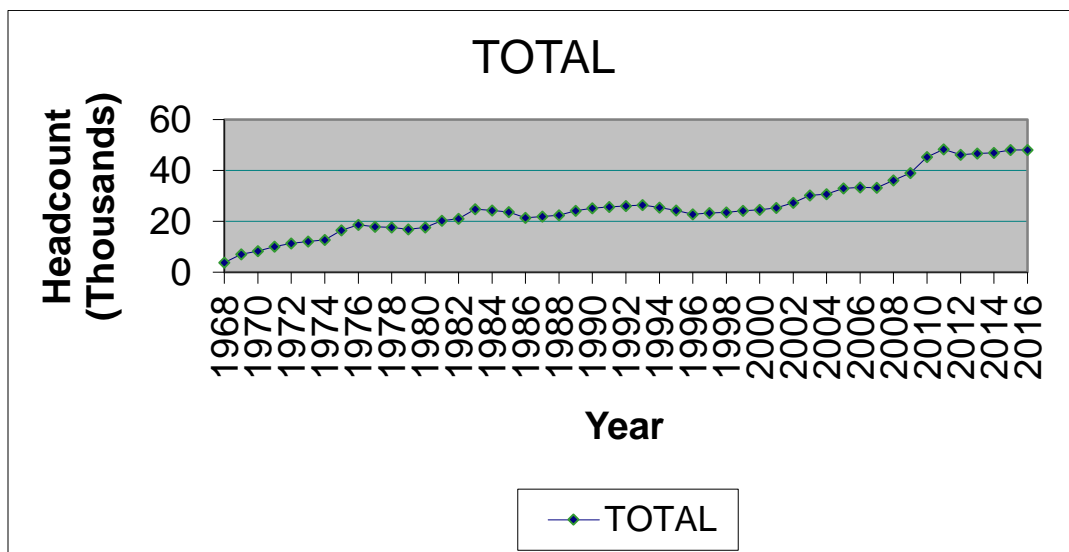


STATISTICAL HANDBOOK

2016SP

HEADCOUNT ENROLLMENTS SPRING SEMESTERS -- 1968 – PRESENT



Office of Institutional Intelligence and
Research

Tarrant County College

Table of Contents

TCCD 2016 Spring Semester Statistical Handbook

	Page
Introduction	1
Section I: Historical Data	2
Table 1. Headcount and Full-Time Equivalent	3
Figure 1. Headcount Enrollments by Campus, Spring Semesters	4
Section II: Demographic Data	5
Table 2. 2016 Spring Headcount, Enrollments, Contact Hours, and Semester Hours	6
Table 3. 2016 Spring – Race & Ethnicity by Gender – District	7
Table 3a. 2016 Spring – Race & Ethnicity by Gender – TCC Connect	8
Table 4. 2016 Spring – Race & Ethnicity by Gender – South	9
Table 5. 2016 Spring – Race & Ethnicity by Gender – Northeast	10
Table 6. 2016 Spring – Race & Ethnicity by Gender – Northwest	11
Table 7. 2016 Spring – Race & Ethnicity by Gender – Southeast	12
Table 8. 2016 Spring – Race & Ethnicity by Gender – Trinity River	13
Table 9a. Average Age by Campus – Separated by Age Group	14
Table 9b. Average Age by Campus – Mean	14
Table 9c. Students by Zip Code	15
Table 10. Full/Part Time for District	18
Table 11. Full/Part Time by Campus	18
Section III: Course Enrollments by Department by Campus	19
Table 12. Enrollments by Department	20
Section IV: Course Enrollments by Course Number by Campus	23
Table 13. Enrollments by Course	24
Section V: IPEDS Race & Ethnicity Data	39
Table 14. 2016 Spring – Race/Ethnicity by Gender – District	40
Table 14a. 2016 Spring – Race/Ethnicity by Gender – TCC Connect	41
Table 15. 2016 Spring – Race/Ethnicity by Gender – South	42
Table 16. 2016 Spring – Race/Ethnicity by Gender – Northeast	43
Table 17. 2016 Spring – Race/Ethnicity by Gender – Northwest	44
Table 18. 2016 Spring – Race/Ethnicity by Gender – Southeast	45
Table 19. 2016 Spring – Race/Ethnicity by Gender – Trinity River	46
Section VI: Other Student & Enrollment Data	47
Table 20. Developmental Education Courses by Campus	48
Table 21. TCC Connect Enrollments	50
Table 22. Distance Learning Enrollments by Campus	51
Table 23. Sections Taught by Adjunct & Full-time Faculty	52
Table 24. Ratio Comparison of 2016SP data to 2015SP data	53
Table 25. Weekend College Enrollments by Campus	54

INTRODUCTION

This statistical handbook contains data on TCCD credit students for Spring 2016. It does not include Continuing Education students. NSOR (New Student Orientation) enrollments are also excluded from this handbook.

Table 2 contains information related to the source of the data in this report and how the data in this report relates to data in other reports such as the certified state reports. Minor differences are to be expected between *Colleague* reports that are run at different times; this data may vary slightly from other *Colleague* reports. Audit enrollments are included in this report.

If there are questions about this statistical handbook, please contact the TCCD Office of Institutional Intelligence and Research.

Please note: TCC Connect became a separate campus beginning 2015FL and so this 2016SP Statistical Handbook contains data for all six TCCD Campuses. For the previous academic year (2014FL, 2015SP, and 2015SU) TCC Connect was reported as part of Trinity River Campus. Due to this TCC Connect internal reorganization, there was significant change in the student headcount on all of the other five TCCD Campuses.

For comparison purposes, this 2016SP Statistical Handbook uses the same format as the 2015SP Statistical Handbook but with the following changes. Tables 3a and 14a are the only new tables in this 2016SP Statistical Handbook. All other tables retain the table numbers from the previous 2015SP Statistical Handbook, except the previous Table 21 was deleted and replaced by the previous Table 26 renumbered as Table 21.

Section I

HISTORICAL DATA

LIMITATIONS OF STATISTICAL HANDBOOK DATA

Section I contains data on TCCD credit students for Spring 2016 (does not include Continuing Education students).

This section is based on data collected from the *Colleague* system for all semesters beginning in the year 2004. All data identified that is prior to 2004 was collected utilizing the Legacy system. Minor differences are to be expected between *Colleague* reports that are run at different times; thus, this data may vary slightly from other *Colleague* reports.

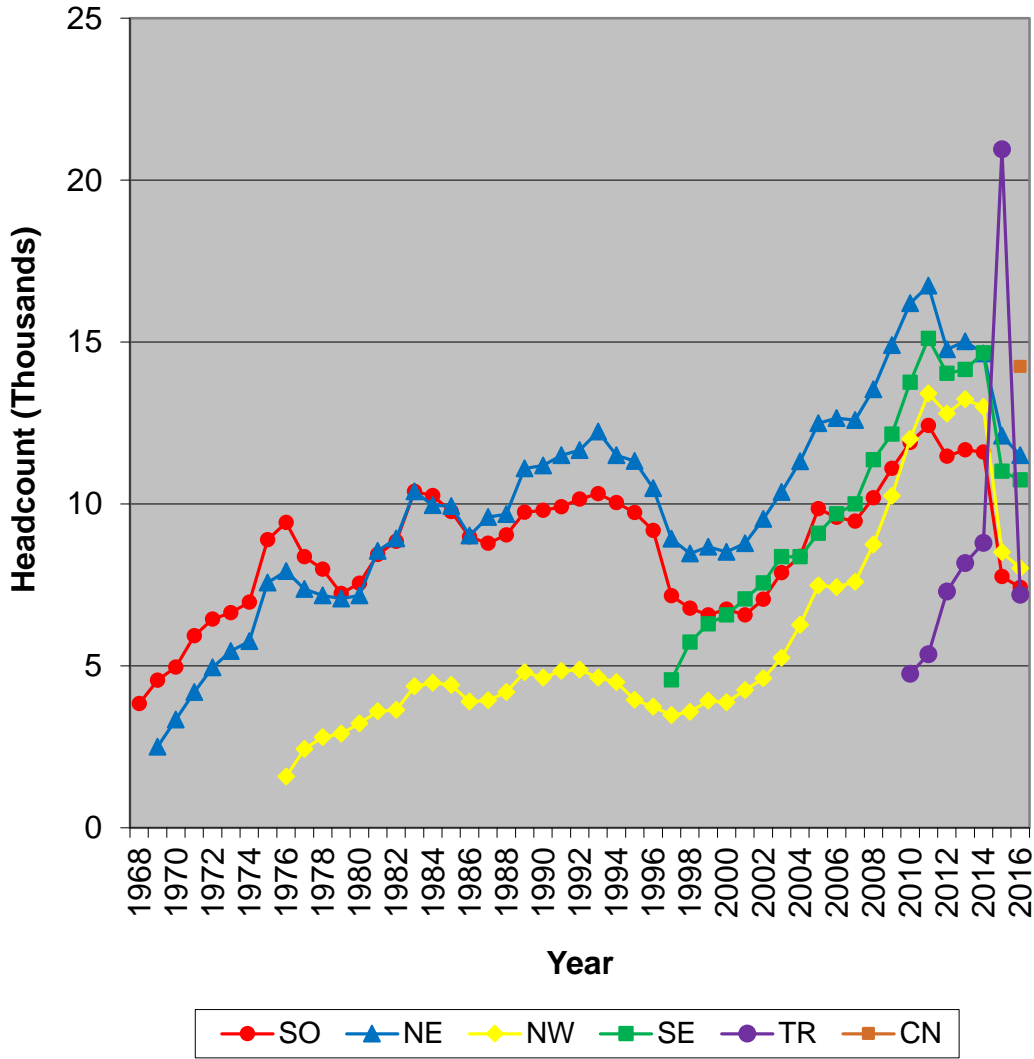
Minor differences are to be expected between the data in this section and the certified state reports.

**TABLE 1--SPRING SEMESTERS
HEADCOUNT AND FULL-TIME EQUIVALENT**

YEAR	District			South			Northeast			Northwest			Southeast			Trinity River			TCC Connect		
	Total	HC	FTE	HC	FTE	% of Total	HC	FTE	% of Total	HC	FTE	% of Total	HC	FTE	% of Total	HC	FTE	% of Total	HC	FTE	% of Total
1976-77	17856	18190	10741	8374	5044	46.96	7379	4254	39.61	2437	1443	13.43									
1977-78	17671	17968	10160	7986	4617	45.44	7178	3957	38.95	2804	1586	15.61									
1978-79	16922	17218	9168	7233	3884	42.36	7079	3729	40.67	2906	1555	16.96									
1979-80	17633	17960	9507	7558	4047	42.57	7176	3743	39.37	3226	1717	18.06									
1980-81	20273	20598	10542	8447	4417	41.90	8554	4282	40.62	3597	1843	17.48									
1981-82	21087	21422	11085	8843	4636	41.82	8937	4579	41.31	3642	1870	16.87									
1982-83	24755	25151	12950	10393	5468	42.22	10386	5214	40.26	4372	2268	17.51									
1983-84	24311	24709	12572	10260	5298	42.14	9968	4996	39.74	4481	2278	18.12									
1984-85	23741	24116	11933	9770	4860	40.73	9937	4911	41.15	4409	2162	18.12									
1985-86	21451	21908	11038	8988	4457	40.38	9026	4635	41.99	3894	1946	17.63									
1986-87	21903	22328	11479	8793	4480	39.03	9595	4983	43.41	3940	2016	17.56									
1987-88	22468	22922	11732	9042	4532	38.63	9688	5091	43.39	4192	2109	17.98									
1988-89	25162	25653	12993	9747	4889	37.63	11103	5758	44.32	4803	2346	18.06									
1989-90	25132	25626	13101	9802	4968	37.92	11188	5806	44.32	4636	2327	17.76									
1990-91	25690	26278	13746	9919	5131	37.33	11510	6140	44.67	4849	2475	18.01									
1991-92	26048	26698	13971	10149	5203	37.24	11660	6233	44.61	4889	2535	18.14									
1992-93	26498	27202	14394	10322	5383	37.40	12238	6565	45.61	4642	2446	16.99									
1993-94	25403	26044	13739	10046	5242	38.15	11502	6135	44.65	4496	2362	17.19									
1994-95	24285	25040	13037	9736	5036	38.63	11350	5910	45.33	3954	2091	16.04									
1995-96	22792	23415	12384	9187	4892	39.50	10492	5510	44.49	3736	1982	16.00									
1996-97	23281	24152	12855	7168	3821	29.72	8931	4803	37.36	3486	1853	14.41	4567	2378	18.50						
1997-98	23603	24574	13101	6786	3587	27.38	8468	4522	34.52	3584	1862	14.21	5736	3130	23.89						
1998-99	24203	25475	13747	6573	3538	25.74	8678	4693	34.14	3928	2057	14.96	6296	3459	25.16						
1999-00	24519	25727	14017	6753	3661	26.12	8519	4625	33.00	3875	2051	14.63	6580	3680	26.25						
2000-01	25367	26690	14726	6575	3598	24.43	8788	4811	32.67	4255	2314	15.71	7072	4003	27.18						
2001-02	27345	28786	16123	7058	3964	24.59	9542	5309	32.93	4621	2513	15.59	7565	4337	26.90						
2002-03	30160	31875	17562	7881	4368	24.87	10368	5652	32.18	5253	2813	16.02	8373	4729	26.93						
2003-04	30670	34343	17752	8386	4225	23.80	11314	5865	33.04	6265	3110	17.52	8376	4552	25.64						
2004-05	33030	38937	19023	9855	4724	24.83	12496	6062	31.87	7485	3436	18.06	9099	4800	25.23						
2005-06	33313	39369	18832	9588	4485	23.82	12648	6119	32.49	7432	3326	17.66	9694	4901	26.02						
2006-07	33241	39675	18832	9470	4394	23.33	12595	6024	31.99	7590	3406	18.09	10002	5004	26.57						
2007-08	36082	43859	20150	10187	4596	22.81	13537	6408	31.80	8751	3777	18.74	11369	5367	26.64						
2008-09	39053	48408	22086	11101	4947	22.40	14903	7040	31.88	10247	4466	20.22	12157	5633	25.50						
2009-10	45323	58624	26115	11899	5289	20.25	16202	7504	28.73	12008	5138	19.67	13761	6350	24.32	4754	1833	7.02			
2010-11	48376	63050	27812	12428	5387	19.37	16742	7627	27.42	13408	5661	20.35	15117	6950	24.99	5355	2187	7.86			
2011-12	46204	60375	26715	11475	4926	18.44	14777	6740	25.23	12789	5408	20.24	14037	6508	24.36	7297	3133	11.73			
2012-13	46750	62257	26957	11669	4855	18.01	15025	6680	24.78	13231	5499	20.40	14156	6468	23.99	8176	3460	12.84			
2013-14	46917	62716	26648	11603	4741	17.79	14651	6410	24.05	12999	5395	20.25	14665	6459	24.24	8798	3643	13.67			
2014-15	48112	60347	26735	7765	3446	12.89	12109	5595	20.93	8508	3900	14.59	11011	5408	20.23	20954	8385	31.36			
2015-16	48078	59139	25905	7429	3375	13.03	11501	5275	20.36	8018	3827	14.77	10746	5223	20.16	7198	3182	12.28	14247	5024	19.39

Note: District total represents unduplicated headcount

Figure 1. Headcount Enrollments by Campus, Spring Semesters
Spring 1968 to Spring 2016



Please note: TCC Connect became a separate campus beginning 2015FL and so this 2016SP Statistical Handbook contains data for all six TCCD Campuses. Due to this TCC Connect internal reorganization, there was significant change in the student headcount on all of the other five TCCD Campuses.

For 2014FL TCC Connect was reported as part of Trinity River Campus. This accounts for the spike in the Trinity River Campus headcount shown in purple in the above graph.

Section II

DEMOGRAPHIC DATA

Tables 3 through 8 in Section II contain the raw data for the categories of race and ethnicity. The changes in race and ethnicity are due to Federal reporting requirements. Section V contains race/ethnicity data of a different format.

LIMITATIONS OF STATISTICAL HANDBOOK DATA

Section II contains data on TCCD credit students for Spring 2016 (does not include Continuing Education students). This section is based on data from the *Colleague* system. Minor differences are to be expected between *Colleague* reports that are run at different times; thus, this data may vary slightly from other *Colleague* reports.

Minor differences are to be expected between the data in this section and the certified state reports.

Table 2. 2016SP Headcount, Enrollments, Contact Hours, and Semester Hours

UG CONTACT HOURS AND HEADCOUNT

TERM: 2016SP

CAMPUS	HEADCOUNT	CREDIT STUDENTS ALL ENROLLMENTS		SEMESTER HOURS	FTE
		NUMBER OF ENROLLMENTS	CONTACT HOURS		
Northeast	11,501	30,246	1,535,792	79,119	5,275
Northwest	8,018	21,432	1,097,032	57,400	3,827
Southeast	10,746	29,112	1,433,216	78,338	5,223
South	7,429	18,166	992,832	50,620	3,375
Trinity River	7,198	17,490	965,328	47,735	3,182
TCC Connect	14,247	25,160	1,263,120	75,356	5,024
TOTAL (Dupl)	59,139	141,606	7,287,320	388,568	25,905
TOTAL (Undupl)	48,078				

Notes: This report was run on the *Colleague* system using the semester as defined by the *Colleague* field Term.

This report includes all enrollments for the *Colleague* Term (semester) as of the run time. This data will differ from some other reports that only include enrollments in classes with an ODOR (Official Day of Record) on or before the official semester ODOR (i.e. some reports exclude some "miniterm" enrollments).

This report may differ from other *Colleague* reports with different run time/dates. The data in this Table 2 is based on an XUHS run made 2/4/2016 and excludes NSOR enrollments.

This report will differ from the certified state reports. State reports use a different definition for semester.

Table 3. 2016SP Race & Ethnicity by Gender TCCD District

This page contains the raw data for the new categories of race and ethnicity. The changes in race and ethnicity are due to Federal reporting requirements. Section V contains ethnicity data of a format similar to previous Statistical Handbooks.

Gender/Races		Ethnics				Total
			Ethnicity Unknown	Hispanic/Latino	Non Hispanic/Latino	
Female		6	4	2239	1	2250
	American/Alaska Native	1	10	168	99	278
	Asian	0	67	27	1471	1565
	Black or African American	1	256	151	5186	5594
	Hawaiian/Pacific Islander	0	4	29	38	71
	International	0	150	10	64	224
	Multi	0	53	119	617	789
	Race Unknown	0	160	3482	125	3767
	White	0	496	2505	10471	13472
Total	8	1200	8730	18072	28010	
Male		12	2	1350	2	1366
	American/Alaska Native	0	5	124	91	220
	Asian	0	94	28	1354	1476
	Black or African American	0	194	74	2958	3226
	Hawaiian/Pacific Islander	0	6	19	50	75
	International	0	117	9	58	184
	Multi	0	40	98	466	604
	Race Unknown	0	141	2475	114	2730
	White	0	428	1601	8158	10187
Total	12	1027	5778	13251	20068	
Total		18	6	3589	3	3616
	American/Alaska Native	1	15	292	190	498
	Asian	0	161	55	2825	3041
	Black or African American	1	450	225	8144	8820
	Hawaiian/Pacific Islander	0	10	48	88	146
	International	0	267	19	122	408
	Multi	0	93	217	1083	1393
	Race Unknown	0	301	5957	239	6497
	White	0	924	4106	18629	23659
Total	20	2227	14508	31323	48078	

Table 3a. 2016SP Race & Ethnicity by Gender TCC Connect

This page contains the raw data for the new categories of race and ethnicity. The changes in race and ethnicity are due to Federal reporting requirements. Section V contains ethnicity data of a format similar to previous Statistical Handbooks.

Gender/Races		Ethnics				Total
			Ethnicity Unknown	Hispanic/Latino	Non Hispanic/Latino	
Female		1	2	558	0	561
	American/Alaska Native	0	2	51	35	88
	Asian	0	19	5	458	482
	Black or African American	0	79	62	1811	1952
	Hawaiian/Pacific Islander	0	1	10	12	23
	International	0	23	2	13	38
	Multi	0	19	30	230	279
	Race Unknown	0	37	741	26	804
	White	0	205	739	4386	5330
Total	1	387	2198	6971	9557	
Male		3	0	245	0	248
	American/Alaska Native	0	0	21	17	38
	Asian	0	21	7	330	358
	Black or African American	0	27	19	624	670
	Hawaiian/Pacific Islander	0	1	7	12	20
	International	0	15	0	12	27
	Multi	0	6	22	121	149
	Race Unknown	0	32	312	32	376
	White	0	130	306	2368	2804
Total	3	232	939	3516	4690	
Total		4	2	803	0	809
	American/Alaska Native	0	2	72	52	126
	Asian	0	40	12	788	840
	Black or African American	0	106	81	2435	2622
	Hawaiian/Pacific Islander	0	2	17	24	43
	International	0	38	2	25	65
	Multi	0	25	52	351	428
	Race Unknown	0	69	1053	58	1180
	White	0	335	1045	6754	8134
Total	4	619	3137	10487	14247	

Table 4. 2016SP Race & Ethnicity by Gender SO Campus

This page contains the raw data for the new categories of race and ethnicity. The changes in race and ethnicity are due to Federal reporting requirements. Section V contains ethnicity data of a format similar to previous Statistical Handbooks.

Gender/Races		Ethnics				Total
			Ethnicity Unknown	Hispanic/Latino	Non Hispanic/Latino	
Female		1	0	414	0	415
	American/Alaska Native	1	1	20	5	27
	Asian	0	4	4	130	138
	Black or African American	0	33	24	998	1055
	Hawaiian/Pacific Islander	0	0	4	3	7
	International	0	21	0	5	26
	Multi	0	3	16	75	94
	Race Unknown	0	21	581	24	626
	White	0	37	365	1023	1425
Total	2	120	1428	2263	3813	
Male		2	1	350	2	355
	American/Alaska Native	0	2	24	19	45
	Asian	0	11	4	187	202
	Black or African American	0	47	5	680	732
	Hawaiian/Pacific Islander	0	0	2	7	9
	International	0	26	2	15	43
	Multi	0	6	18	70	94
	Race Unknown	0	24	475	19	518
	White	0	65	337	1216	1618
Total	2	182	1217	2215	3616	
Total		3	1	764	2	770
	American/Alaska Native	1	3	44	24	72
	Asian	0	15	8	317	340
	Black or African American	0	80	29	1678	1787
	Hawaiian/Pacific Islander	0	0	6	10	16
	International	0	47	2	20	69
	Multi	0	9	34	145	188
	Race Unknown	0	45	1056	43	1144
	White	0	102	702	2239	3043
Total	4	302	2645	4478	7429	

Table 5. 2016SP Race & Ethnicity by Gender NE Campus

This page contains the raw data for the new categories of race and ethnicity. The changes in race and ethnicity are due to Federal reporting requirements. Section V contains ethnicity data of a format similar to previous Statistical Handbooks.

Gender/Races		Ethnics				Total
			Ethnicity Unknown	Hispanic/Latino	Non Hispanic/Latino	
Female		2	1	384	1	388
	American/Alaska Native	0	3	31	24	58
	Asian	0	22	7	392	421
	Black or African American	0	55	38	997	1090
	Hawaiian/Pacific Islander	0	1	4	13	18
	International	0	48	3	22	73
	Multi	0	15	28	158	201
	Race Unknown	0	42	678	34	754
	White	0	129	506	2902	3537
Total	2	316	1679	4543	6540	
Male		2	1	197	0	200
	American/Alaska Native	0	1	19	28	48
	Asian	0	27	8	334	369
	Black or African American	0	39	24	596	659
	Hawaiian/Pacific Islander	0	2	3	13	18
	International	0	28	1	15	44
	Multi	0	11	23	127	161
	Race Unknown	0	39	521	31	591
	White	0	127	330	2414	2871
Total	2	275	1126	3558	4961	
Total		4	2	581	1	588
	American/Alaska Native	0	4	50	52	106
	Asian	0	49	15	726	790
	Black or African American	0	94	62	1593	1749
	Hawaiian/Pacific Islander	0	3	7	26	36
	International	0	76	4	37	117
	Multi	0	26	51	285	362
	Race Unknown	0	81	1199	65	1345
	White	0	256	836	5316	6408
Total	4	591	2805	8101	11501	

Table 6. 2016SP Race & Ethnicity by Gender NW Campus

This page contains the raw data for the new categories of race and ethnicity. The changes in race and ethnicity are due to Federal reporting requirements. Section V contains ethnicity data of a format similar to previous Statistical Handbooks.

Gender/Races		Ethnics				Total
			Ethnicity Unknown	Hispanic/Latino	Non Hispanic/Latino	
Female		1	2	454	0	457
	American/Alaska Native	0	3	19	16	38
	Asian	0	6	3	170	179
	Black or African American	0	18	16	437	471
	Hawaiian/Pacific Islander	0	1	4	6	11
	International	0	19	1	5	25
	Multi	0	7	17	97	121
	Race Unknown	0	19	617	13	649
	White	0	94	515	1760	2369
	Total	1	169	1646	2504	4320
Male		5	0	279	0	284
	American/Alaska Native	0	2	25	20	47
	Asian	0	13	3	175	191
	Black or African American	0	18	16	352	386
	Hawaiian/Pacific Islander	0	2	3	11	16
	International	0	17	4	9	30
	Multi	0	8	17	96	121
	Race Unknown	0	34	496	23	553
	White	0	83	347	1640	2070
	Total	5	177	1190	2326	3698
Total		6	2	733	0	741
	American/Alaska Native	0	5	44	36	85
	Asian	0	19	6	345	370
	Black or African American	0	36	32	789	857
	Hawaiian/Pacific Islander	0	3	7	17	27
	International	0	36	5	14	55
	Multi	0	15	34	193	242
	Race Unknown	0	53	1113	36	1202
	White	0	177	862	3400	4439
	Total	6	346	2836	4830	8018

Table 7. 2016SP Race & Ethnicity by Gender SE Campus

This page contains the raw data for the new categories of race and ethnicity. The changes in race and ethnicity are due to Federal reporting requirements. Section V contains ethnicity data of a format similar to previous Statistical Handbooks.

Gender/Races		Ethnics				Total
			Ethnicity Unknown	Hispanic/Latino	Non Hispanic/Latino	
Female		2	0	560	0	562
	American/Alaska Native	0	0	65	29	94
	Asian	0	27	7	494	528
	Black or African American	1	83	37	1618	1739
	Hawaiian/Pacific Islander	0	1	10	10	21
	International	0	56	4	28	88
	Multi	0	8	34	140	182
	Race Unknown	0	47	769	33	849
	White	0	71	488	1529	2088
Total	3	293	1974	3881	6151	
Male			0	345	1	346
	American/Alaska Native		0	40	18	58
	Asian		28	11	480	519
	Black or African American		73	19	977	1069
	Hawaiian/Pacific Islander		0	7	14	21
	International		46	5	22	73
	Multi		13	23	111	147
	Race Unknown		31	567	23	621
	White		71	336	1334	1741
Total		262	1353	2980	4595	
Total		2	0	905	1	908
	American/Alaska Native	0	0	105	47	152
	Asian	0	55	18	974	1047
	Black or African American	1	156	56	2595	2808
	Hawaiian/Pacific Islander	0	1	17	24	42
	International	0	102	9	50	161
	Multi	0	21	57	251	329
	Race Unknown	0	78	1336	56	1470
	White	0	142	824	2863	3829
Total	3	555	3327	6861	10746	

Table 8. 2016SP Race & Ethnicity by Gender TR Campus

This page contains the raw data for the new categories of race and ethnicity. The changes in race and ethnicity are due to Federal reporting requirements. Section V contains ethnicity data of a format similar to previous Statistical Handbooks.

Gender/Races		Ethnics				Total
			Ethnicity Unknown	Hispanic/Latino	Non Hispanic/Latino	
Female		2	0	480	0	482
	American/Alaska Native	1	1	18	13	33
	Asian	0	3	5	180	188
	Black or African American	0	31	18	707	756
	Hawaiian/Pacific Islander	0	0	4	5	9
	International	0	29	2	13	44
	Multi	0	8	16	80	104
	Race Unknown	0	25	851	16	892
	White	0	59	505	1525	2089
Total	3	156	1899	2539	4597	
Male			0	226	0	226
	American/Alaska Native		0	12	12	24
	Asian		11	2	105	118
	Black or African American		22	8	364	394
	Hawaiian/Pacific Islander		1	2	5	8
	International		27	2	10	39
	Multi		3	15	56	74
	Race Unknown		17	542	18	577
	White		30	271	840	1141
Total		111	1080	1410	2601	
Total		2	0	706	0	708
	American/Alaska Native	1	1	30	25	57
	Asian	0	14	7	285	306
	Black or African American	0	53	26	1071	1150
	Hawaiian/Pacific Islander	0	1	6	10	17
	International	0	56	4	23	83
	Multi	0	11	31	136	178
	Race Unknown	0	42	1393	34	1469
	White	0	89	776	2365	3230
Total	3	267	2979	3949	7198	

Table 9a. 2016SP Age by Campus

		Campus						Total
		CN	NE	NW	SE	SO	TR	
Under 21	Count	5949	4171	3247	4527	2728	2654	23276
	% within Campus	41.8%	36.3%	40.5%	42.1%	36.7%	36.9%	39.4%
21-25	Count	3027	3408	2195	3158	2098	2110	15996
	% within Campus	21.2%	29.6%	27.4%	29.4%	28.2%	29.3%	27.0%
26-30	Count	1937	1465	1014	1153	895	959	7423
	% within Campus	13.6%	12.7%	12.6%	10.7%	12.0%	13.3%	12.6%
31-35	Count	1272	835	571	655	574	545	4452
	% within Campus	8.9%	7.3%	7.1%	6.1%	7.7%	7.6%	7.5%
36-40	Count	823	565	378	472	362	337	2937
	% within Campus	5.8%	4.9%	4.7%	4.4%	4.9%	4.7%	5.0%
41 and up	Count	1239	1057	613	781	772	593	5055
	% within Campus	8.7%	9.2%	7.6%	7.3%	10.4%	8.2%	8.5%
Total	Count	14247	11501	8018	10746	7429	7198	59139
	% within Campus	100.0%	100.0%	100.0%	100.0%	100.0%	100.0%	100.0%

Table 9b. 2016SP Average Age by Campus

CN	NE	NW	SE	SO	TR	TCCD
25.80	26.41	25.68	25.21	26.60	25.87	25.60*

* The TCCD average age of 25.60 is based on the average age of the unduplicated enrollment count of 48,078.

Table 9c. 2016SP Students by ZIP Code

Zip Code	Campus						Total
	CN	NE	NW	SE	SO	TR	
76063	886	82	30	1060	152	104	2314
76137	449	761	560	56	55	164	2045
76244	544	696	496	34	47	122	1939
76179	465	163	1033	29	55	154	1899
75052	374	72	20	1104	56	65	1691
76017	461	81	37	691	237	98	1605
76002	443	55	19	875	68	71	1531
76133	296	73	97	40	595	324	1425
76010	219	80	25	902	81	46	1353
76001	386	60	20	620	115	63	1264
76131	283	190	588	36	33	109	1239
76123	284	64	63	77	475	233	1196
76248	466	540	94	18	13	53	1184
76018	269	47	19	740	64	40	1179
76180	266	689	85	34	28	59	1161
76116	238	85	280	28	169	359	1159
76014	215	52	16	745	66	47	1141
76028	279	56	41	94	444	204	1118
76108	262	65	460	27	57	205	1076
76106	149	61	517	13	40	186	966
76112	177	248	58	76	203	200	962
76039	215	545	49	55	19	39	922
76051	223	601	34	22	13	29	922
76119	141	63	37	57	454	165	917
76013	246	102	27	376	100	49	900
76021	215	518	45	32	19	35	864
76140	152	42	31	63	486	90	864
76016	271	63	24	259	159	76	852
76117	161	364	127	14	33	153	852
76182	239	483	65	11	17	33	848
76110	131	45	62	28	258	302	826
76134	129	37	31	37	416	129	779
76036	200	43	34	32	326	123	758
76053	131	482	48	30	24	41	756
76040	167	432	44	35	19	41	738
76114	164	32	269	14	21	226	726
76148	148	368	110	13	13	40	692
76132	137	45	63	28	233	175	681
76006	174	140	26	268	31	36	675
76107	95	46	75	25	78	318	637
76012	149	116	16	217	51	70	619
76111	60	94	82	16	66	272	590
76135	128	50	324	12	13	61	588
76115	72	22	30	20	243	131	518
76015	118	43	9	261	54	30	515
76011	105	84	16	237	26	37	505
76020	180	33	225	10	13	36	497

Zip Code	Campus						Total
	CN	NE	NW	SE	SO	TR	
76262	137	233	86	10	4	25	495
76120	97	157	28	58	57	97	494
76092	285	173	15	4	5	9	491
76052	121	80	230	11	12	25	479
76126	96	28	126	10	89	103	452
76104	67	29	26	23	145	159	449
76105	75	30	25	25	166	128	449
76118	76	254	29	14	17	42	432
76034	116	235	16	8	4	15	394
76103	55	64	42	13	69	143	386
76164	36	25	144	8	19	151	383
76022	83	232	26	10	8	15	374
76177	99	86	135	14	10	28	372
76109	73	17	32	15	78	125	340
75054	107	13	2	173	17	9	321
75050	69	58	14	111	13	19	284
76054	85	162	14	5	3	13	282
75051	32	19	2	139	11	7	210
76060	55	10	5	51	70	13	204
76102	36	16	26	14	20	81	193
76009	31	7	7	58	59	13	175
76247	32	35	70	3	4	12	156
75104	29	5	4	72	9	5	124
76008	23	9	44	4	13	30	123
76155	28	49	8	28	4	6	123
76058	29	8	6	7	49	23	122
76065	22	10	4	39	13	2	90
76087	14	10	29	3	8	20	84
76082	23	7	31	1	9	9	80
76078	19	16	37	1	1	4	78
76085	29	4	21	0	3	6	63
76049	16	6	10	6	11	11	60
76084	19	0	0	23	9	5	56
76071	10	5	32	1	3	1	52
75115	20	3	1	19	3	5	51
75249	14	2	2	26	2	2	48
76031	9	7	1	3	14	10	44
76033	12	3	1	4	16	8	44
76086	13	6	7	2	4	5	37
75038	9	12	2	4	2	5	34
76059	10	1	1	3	11	8	34
75060	4	13	0	6	4	5	32
75062	4	12	2	5	1	5	29
75028	7	9	6	2	0	2	26
75067	5	10	4	3	2	2	26
75061	8	8	2	5	1	1	25
76226	5	7	10	1	0	2	25
75116	9	1	0	13	0	1	24
75165	6	2	3	7	1	4	23
76048	9	2	3	1	5	3	23

Zip Code	Campus						Total
	CN	NE	NW	SE	SO	TR	
75137	7	1	0	12	2	0	22
75154	6	0	0	12	1	3	22
75232	7	5	2	6	1	1	22
76234	6	0	11	0	0	4	21
75063	9	5	1	3	0	0	18
75236	8	2	0	5	1	2	18
76003	7	1	1	6	3	0	18
76005	5	7	2	1	2	1	18
76023	3	4	8	1	1	0	17
76050	4	2	2	0	8	1	17
76127	6	1	4	2	3	1	17
75077	5	3	6	1	0	1	16
75211	5	2	2	7	0	0	16
76088	2	2	5	0	3	4	16
75241	7	3	1	4	0	0	15
76161	4	2	3	3	1	2	15
Other	326	158	138	146	87	113	968
Total	14247	11501	8018	10746	7429	7198	59139

** ZIP Code groups with < 15 and students without Zip Codes are identified as Other.

Table 10. 2016SP Full/Part Time for TCCD

	Frequency	Percent
Part Time	35,194	73.2
Full Time	12,884	26.8
Total	48,078	100.0

Table 10 is the full/part time student data for the TCCD district as a whole.

Table 11. 2016SP Full/Part Time by Campus

Campus		Full/Part Time		Total
		Part Time	Full Time	
CN	Count	13423	824	14247
	% within Campus	94.2%	5.8%	100.0%
	% within Full/Part Time	26.9%	8.8%	24.1%
NE	Count	9319	2182	11501
	% within Campus	81.0%	19.0%	100.0%
	% within Full/Part Time	18.7%	23.4%	19.4%
NW	Count	6318	1700	8018
	% within Campus	78.8%	21.2%	100.0%
	% within Full/Part Time	12.7%	18.2%	13.6%
SE	Count	8372	2374	10746
	% within Campus	77.9%	22.1%	100.0%
	% within Full/Part Time	16.8%	25.5%	18.2%
SO	Count	6160	1269	7429
	% within Campus	82.9%	17.1%	100.0%
	% within Full/Part Time	12.4%	13.6%	12.6%
TR	Count	6229	969	7198
	% within Campus	86.5%	13.5%	100.0%
	% within Full/Part Time	12.5%	10.4%	12.2%
Total	Count	49821	9318	59139
	% within Campus	84.2%	15.8%	100.0%
	% within Full/Part Time	100.0%	100.0%	100.0%

Table 11 is the full/part time student data for each individual campus. For this table, only enrollments at the individual campus are considered. For example, if a student took 9 hours at SO and 3 hours at NE, the student is listed as part time at SO and part time at NE (and full time in Table 10).

Section III

Course Enrollments by Department by Campus

LIMITATIONS OF STATISTICAL HANDBOOK DATA

Section III contains data on TCCD credit students for Spring 2016 (does not include Continuing Education students). This section is based on data from the *Colleague* system. Minor differences are to be expected between *Colleague* reports that are run at different times; thus, this data may vary slightly from other *Colleague* reports.

Minor differences are to be expected between the data in this section and the certified state reports.

Section III excludes 11,956 enrollments in separate lab sections that are included in Section II. Section II contains 141,606 total enrollments for 2016SP. This section contains 129,650 enrollments.

Section III excludes NSOR (New Student Orientation) enrollments.

Course Enrollments

Tables 12 and 13 exclude 11,956 enrollments in separate lab sections that are included in Table 2. Table 2 contains 141,606 total enrollments for 2016SP. Tables 12 and 13 contain 129,650 enrollments.

Table 12. 2016SP Enrollments by Department

Department	Campus						Total
	CN	NE	NW	SE	SO	TR	
ABDR	0	0	0	0	74	0	74
ACCT	516	328	154	420	171	245	1834
ACNT	219	0	27	25	0	0	271
AERM	0	0	1141	0	0	0	1141
AGCR	0	0	8	0	0	0	8
AIRP	0	0	216	0	0	0	216
ANTH	27	0	0	0	0	89	116
ARCE	0	0	0	0	17	0	17
ARCH	0	0	0	0	84	0	84
ARCT	0	0	0	0	9	0	9
ARTC	0	260	0	0	0	0	260
ARTS	496	980	572	805	409	448	3710
ARTV	0	16	0	0	0	0	16
AUMT	0	0	0	0	292	0	292
AVNC	0	0	17	0	0	0	17
BCIS	397	305	152	178	92	161	1285
BIOL	831	1811	1222	1764	901	822	7351
BMGT	518	146	90	218	125	91	1188
BUSG	211	12	78	34	23	16	374
BUSI	482	189	20	103	121	72	987
CDEC	0	245	0	0	0	0	245
CETT	0	0	0	0	133	0	133
CHEF	0	0	0	244	0	0	244
CHEM	89	584	319	423	364	242	2021
CJLE	0	0	101	0	0	0	101
CJSA	0	0	47	0	0	0	47
CNBT	0	0	0	0	211	0	211
COMM	0	227	16	25	14	15	297
COSC	396	328	222	307	176	165	1594
CPMT	0	16	0	0	38	0	54
CRIJ	0	17	514	0	0	0	531
DAAC	0	206	0	0	0	0	206
DANC	139	200	137	178	98	0	752
DFTG	0	0	0	0	214	0	214
DHYG	0	141	0	0	0	0	141
DITA	0	0	0	23	0	0	23
DRAM	285	378	218	517	259	71	1728
ECON	1659	338	303	686	292	430	3708
EDTC	0	10	0	0	0	0	10
EDUC	0	242	0	0	139	57	438

Department	Campus						Total
	CN	NE	NW	SE	SO	TR	
ELMT	0	0	0	0	15	0	15
ELPT	0	0	0	0	5	0	5
EMSP	0	265	0	0	0	0	265
ENGL	5791	2404	1911	3280	1518	1641	16545
ENGR	0	0	0	244	0	0	244
EPCT	0	0	58	0	0	0	58
ESOL	0	15	1	217	0	0	233
FDNS	0	0	0	147	0	0	147
FIRS	0	0	120	0	0	0	120
FIRT	0	0	95	0	0	0	95
FLMC	0	20	0	0	0	0	20
FREN	53	115	0	0	38	0	206
FSHN	0	47	0	0	0	0	47
GAME	0	0	0	0	141	0	141
GEOG	193	75	65	42	0	0	375
GEOL	161	327	436	349	253	281	1807
GERM	0	73	0	0	0	0	73
GISC	0	0	0	0	0	43	43
GOVT	1672	1979	1343	2016	1047	1082	9139
HALT	0	0	128	0	0	0	128
HAMG	0	0	0	113	0	0	113
HART	0	0	0	0	393	0	393
HECO	25	210	58	327	48	23	691
HIST	2995	2235	1412	2092	1202	1381	11317
HITT	0	0	0	0	0	78	78
HPRS	0	27	0	0	0	438	465
HRPO	170	17	0	12	12	0	211
HUMA	102	24	298	43	0	154	621
IBUS	25	0	28	0	0	14	67
IFWA	0	0	0	24	0	0	24
IMED	0	38	0	0	0	0	38
INEW	0	11	0	0	0	0	11
INRW	0	179	179	284	208	147	997
ITCC	0	128	0	63	65	0	256
ITNW	28	119	14	18	18	0	197
ITSC	104	148	57	71	37	0	417
ITSE	84	56	0	0	9	0	149
ITSW	56	11	0	15	13	0	95
ITSY	25	86	18	30	29	0	188
KINE	922	1135	958	926	770	405	5116
LBRA	0	0	0	0	0	82	82
LGLA	0	288	0	0	0	0	288
LMGT	0	0	66	0	0	0	66
LTCA	0	0	0	0	0	133	133
MATH	1419	3289	2632	4056	2587	1792	15775
MCHN	0	0	0	0	14	0	14
MILI	0	0	0	0	20	0	20
MRKG	278	31	0	29	22	87	447

Department	Campus						Total
	CN	NE	NW	SE	SO	TR	
MUAP	0	137	53	61	36	0	287
MUEN	0	75	14	49	24	0	162
MUSI	509	619	236	372	261	189	2186
OSHT	0	0	35	0	0	0	35
PHIL	642	656	387	474	419	235	2813
PHTC	0	55	0	0	0	0	55
PHYS	0	303	149	269	130	36	887
POFI	67	0	0	0	9	0	76
POFT	126	0	0	0	30	0	156
PSTR	0	0	0	50	0	0	50
PSYC	1211	1066	877	1164	561	763	5642
PSYT	0	91	0	0	0	0	91
PTHA	0	0	0	0	0	162	162
PTRT	0	0	0	0	11	0	11
RADR	0	0	0	0	0	138	138
RBTC	0	0	0	0	73	0	73
RDNG	0	106	49	137	165	80	537
RELE	0	252	0	0	0	0	252
RNSG	0	0	0	0	0	1540	1540
RSPT	0	0	0	0	0	150	150
RSTO	0	0	0	101	0	0	101
RTVB	0	184	0	0	0	0	184
SCWK	0	48	0	0	0	0	48
SLNG	0	0	0	0	0	445	445
SLPS	0	0	59	0	0	0	59
SOCI	874	473	344	619	168	404	2882
SOCW	0	89	0	38	0	0	127
SPAN	286	428	437	403	337	160	2051
SPCH	953	1217	757	1229	681	657	5494
SRGT	0	0	0	0	0	84	84
SRVY	0	0	0	0	17	0	17
STSC	0	569	359	721	507	340	2496
TECA	0	136	0	0	0	0	136
TECM	0	0	0	0	14	0	14
TRVM	0	0	0	34	0	0	34
WIND	0	0	0	0	2	0	2
WLDG	0	0	0	0	250	0	250
TOTAL	25036	26835	19207	26069	16415	16088	129650

Section IV

Course Enrollments by Course Number by Campus

LIMITATIONS OF STATISTICAL HANDBOOK DATA

Section IV contains data on TCCD credit students for Spring 2016 (does not include Continuing Education students). This section is based on data from the *Colleague* system. Minor differences are to be expected between *Colleague* reports that are run at different times; thus, this data may vary slightly from other *Colleague* reports.

Minor differences are to be expected between the data in this section and the certified state reports.

Section IV excludes 11,956 enrollments in separate lab sections that are included in Section II. Section II contains 141,606 total enrollments for 2016SP. This section contains 129,650 enrollments.

Section IV excludes NSOR (New Student Orientation) enrollments.

Table 13. 2016SP Enrollments by Course

Course	Campus						Total
	CN	NE	NW	SE	SO	TR	
ABDR-2502	0	0	0	0	20	0	20
ABDR-2537	0	0	0	0	21	0	21
ABDR-2549	0	0	0	0	18	0	18
ABDR-2551	0	0	0	0	15	0	15
ACCT-2301	273	200	70	249	105	143	1040
ACCT-2302	243	128	84	171	66	102	794
ACNT-1303	54	0	0	0	0	0	54
ACNT-1311	26	0	0	0	0	0	26
ACNT-1313	29	0	27	25	0	0	81
ACNT-1329	27	0	0	0	0	0	27
ACNT-2303	27	0	0	0	0	0	27
ACNT-2309	28	0	0	0	0	0	28
ACNT-2335	28	0	0	0	0	0	28
AERM-1101	0	0	45	0	0	0	45
AERM-1141	0	0	58	0	0	0	58
AERM-1205	0	0	45	0	0	0	45
AERM-1208	0	0	45	0	0	0	45
AERM-1243	0	0	64	0	0	0	64
AERM-1254	0	0	58	0	0	0	58
AERM-1303	0	0	49	0	0	0	49
AERM-1310	0	0	38	0	0	0	38
AERM-1314	0	0	50	0	0	0	50
AERM-1315	0	0	47	0	0	0	47
AERM-1340	0	0	38	0	0	0	38
AERM-1344	0	0	42	0	0	0	42
AERM-1345	0	0	66	0	0	0	66
AERM-1347	0	0	64	0	0	0	64
AERM-1349	0	0	66	0	0	0	66
AERM-1350	0	0	62	0	0	0	62
AERM-1351	0	0	38	0	0	0	38
AERM-1357	0	0	35	0	0	0	35
AERM-1456	0	0	33	0	0	0	33
AERM-2171	0	0	25	0	0	0	25
AERM-2172	0	0	28	0	0	0	28
AERM-2173	0	0	22	0	0	0	22
AERM-2231	0	0	22	0	0	0	22
AERM-2252	0	0	33	0	0	0	33
AERM-2259	0	0	6	0	0	0	6
AERM-2351	0	0	26	0	0	0	26
AERM-2547	0	0	36	0	0	0	36
AGCR-2418	0	0	8	0	0	0	8
AIRP-1207	0	0	20	0	0	0	20
AIRP-1215	0	0	20	0	0	0	20
AIRP-1255	0	0	10	0	0	0	10
AIRP-1271	0	0	2	0	0	0	2
AIRP-1301	0	0	16	0	0	0	16

Course	Campus						Total
	CN	NE	NW	SE	SO	TR	
AIRP-1313	0	0	18	0	0	0	18
AIRP-1317	0	0	18	0	0	0	18
AIRP-1341	0	0	16	0	0	0	16
AIRP-1343	0	0	8	0	0	0	8
AIRP-1347	0	0	12	0	0	0	12
AIRP-1351	0	0	14	0	0	0	14
AIRP-2151	0	0	3	0	0	0	3
AIRP-2236	0	0	5	0	0	0	5
AIRP-2239	0	0	1	0	0	0	1
AIRP-2242	0	0	3	0	0	0	3
AIRP-2250	0	0	18	0	0	0	18
AIRP-2270	0	0	2	0	0	0	2
AIRP-2271	0	0	3	0	0	0	3
AIRP-2272	0	0	2	0	0	0	2
AIRP-2273	0	0	1	0	0	0	1
AIRP-2333	0	0	5	0	0	0	5
AIRP-2337	0	0	9	0	0	0	9
AIRP-2349	0	0	10	0	0	0	10
ANTH-2302	0	0	0	0	0	22	22
ANTH-2346	27	0	0	0	0	56	83
ANTH-2351	0	0	0	0	0	11	11
ARCE-1342	0	0	0	0	4	0	4
ARCE-2352	0	0	0	0	13	0	13
ARCH-1302	0	0	0	0	12	0	12
ARCH-1304	0	0	0	0	13	0	13
ARCH-1311	0	0	0	0	13	0	13
ARCH-1315	0	0	0	0	27	0	27
ARCH-2312	0	0	0	0	19	0	19
ARCT-1391	0	0	0	0	6	0	6
ARCT-2367	0	0	0	0	3	0	3
ARTC-1302	0	39	0	0	0	0	39
ARTC-1305	0	54	0	0	0	0	54
ARTC-1313	0	15	0	0	0	0	15
ARTC-1353	0	43	0	0	0	0	43
ARTC-2305	0	19	0	0	0	0	19
ARTC-2313	0	19	0	0	0	0	19
ARTC-2317	0	21	0	0	0	0	21
ARTC-2335	0	31	0	0	0	0	31
ARTC-2340	0	19	0	0	0	0	19
ARTS-1301	466	406	337	534	271	330	2344
ARTS-1303	30	114	48	59	24	49	324
ARTS-1304	0	22	0	24	0	0	46
ARTS-1311	0	44	15	27	21	14	121
ARTS-1312	0	10	12	7	12	0	41
ARTS-1316	0	94	33	64	40	45	276
ARTS-1317	0	10	21	15	14	10	70
ARTS-2316	0	35	23	10	18	0	86
ARTS-2317	0	14	17	7	3	0	41
ARTS-2323	0	6	0	0	0	0	6
ARTS-2326	0	6	7	7	0	0	20
ARTS-2327	0	0	9	0	0	0	9
ARTS-2333	0	0	0	11	0	0	11
ARTS-2341	0	0	0	0	1	0	1

Course	Campus						Total
	CN	NE	NW	SE	SO	TR	
ARTS-2346	0	46	14	29	0	0	89
ARTS-2347	0	30	20	11	0	0	61
ARTS-2348	0	14	13	0	3	0	30
ARTS-2349	0	2	3	0	0	0	5
ARTS-2356	0	101	0	0	0	0	101
ARTS-2357	0	26	0	0	0	0	26
ARTS-2366	0	0	0	0	2	0	2
ARTV-1303	0	16	0	0	0	0	16
AUMT-1405	0	0	0	0	48	0	48
AUMT-1407	0	0	0	0	18	0	18
AUMT-1416	0	0	0	0	17	0	17
AUMT-1419	0	0	0	0	35	0	35
AUMT-1445	0	0	0	0	53	0	53
AUMT-2417	0	0	0	0	74	0	74
AUMT-2434	0	0	0	0	47	0	47
AVNC-1303	0	0	17	0	0	0	17
BCIS-1305	397	305	152	178	92	161	1285
BIOL-1406	63	192	109	159	109	116	748
BIOL-1407	24	73	134	135	48	44	458
BIOL-1408	223	446	185	274	143	140	1411
BIOL-1409	127	180	82	150	113	59	711
BIOL-1411	0	6	0	0	0	0	6
BIOL-2306	26	0	0	0	0	0	26
BIOL-2316	55	0	0	15	0	0	70
BIOL-2389	0	0	0	0	4	0	4
BIOL-2401	120	541	288	349	245	203	1746
BIOL-2402	88	247	273	433	112	147	1300
BIOL-2406	0	2	0	0	3	0	5
BIOL-2420	105	110	131	222	110	113	791
BIOL-2421	0	14	20	27	14	0	75
BMGT-1301	85	18	19	31	17	0	170
BMGT-1305	86	63	18	54	26	37	284
BMGT-1313	0	0	11	0	0	0	11
BMGT-1327	171	40	25	52	38	27	353
BMGT-1331	0	0	4	0	0	0	4
BMGT-1341	176	22	0	43	27	13	281
BMGT-1382	0	3	0	0	0	0	3
BMGT-1409	0	0	0	0	0	14	14
BMGT-2309	0	0	0	38	17	0	55
BMGT-2331	0	0	13	0	0	0	13
BUSG-1302	24	0	0	0	0	0	24
BUSG-1315	80	0	24	0	0	0	104
BUSG-1341	29	0	22	0	0	0	51
BUSG-2300	27	12	14	34	23	16	126
BUSG-2309	51	0	18	0	0	0	69
BUSI-1301	289	132	20	91	81	47	660
BUSI-2301	193	57	0	12	40	25	327
CDEC-1321	0	28	0	0	0	0	28
CDEC-1323	0	18	0	0	0	0	18
CDEC-1356	0	20	0	0	0	0	20
CDEC-1358	0	28	0	0	0	0	28
CDEC-1359	0	41	0	0	0	0	41
CDEC-1419	0	26	0	0	0	0	26

Course	Campus						Total
	CN	NE	NW	SE	SO	TR	
CDEC-2307	0	26	0	0	0	0	26
CDEC-2328	0	18	0	0	0	0	18
CDEC-2341	0	24	0	0	0	0	24
CDEC-2386	0	16	0	0	0	0	16
CETT-1409	0	0	0	0	36	0	36
CETT-1441	0	0	0	0	41	0	41
CETT-1445	0	0	0	0	41	0	41
CETT-1449	0	0	0	0	15	0	15
CHEF-1205	0	0	0	70	0	0	70
CHEF-1264	0	0	0	10	0	0	10
CHEF-1301	0	0	0	57	0	0	57
CHEF-1302	0	0	0	23	0	0	23
CHEF-1310	0	0	0	25	0	0	25
CHEF-1341	0	0	0	18	0	0	18
CHEF-1345	0	0	0	20	0	0	20
CHEF-2301	0	0	0	21	0	0	21
CHEM-1405	13	68	74	0	105	0	260
CHEM-1406	21	70	19	80	45	23	258
CHEM-1407	0	6	0	22	17	0	45
CHEM-1411	46	192	135	180	95	142	790
CHEM-1412	9	140	70	102	64	58	443
CHEM-2389	0	5	0	0	3	0	8
CHEM-2423	0	69	9	0	18	0	96
CHEM-2425	0	34	12	39	17	19	121
CJLE-1111	0	0	5	0	0	0	5
CJLE-1345	0	0	20	0	0	0	20
CJLE-1371	0	0	29	0	0	0	29
CJLE-1394	0	0	27	0	0	0	27
CJLE-1506	0	0	5	0	0	0	5
CJLE-1512	0	0	5	0	0	0	5
CJLE-1518	0	0	5	0	0	0	5
CJLE-2247	0	0	5	0	0	0	5
CJSA-1348	0	0	16	0	0	0	16
CJSA-2334	0	0	13	0	0	0	13
CJSA-2388	0	0	18	0	0	0	18
CNBT-1110	0	0	0	0	18	0	18
CNBT-1300	0	0	0	0	34	0	34
CNBT-1302	0	0	0	0	17	0	17
CNBT-1342	0	0	0	0	37	0	37
CNBT-1344	0	0	0	0	18	0	18
CNBT-1346	0	0	0	0	22	0	22
CNBT-2266	0	0	0	0	10	0	10
CNBT-2335	0	0	0	0	13	0	13
CNBT-2337	0	0	0	0	18	0	18
CNBT-2342	0	0	0	0	24	0	24
COMM-1307	0	98	16	25	14	15	168
COMM-1316	0	2	0	0	0	0	2
COMM-1335	0	24	0	0	0	0	24
COMM-2311	0	28	0	0	0	0	28
COMM-2315	0	6	0	0	0	0	6
COMM-2332	0	24	0	0	0	0	24
COMM-2339	0	27	0	0	0	0	27
COMM-2366	0	18	0	0	0	0	18

Course	Campus						Total
	CN	NE	NW	SE	SO	TR	
COSC-1301	277	176	123	185	154	94	1009
COSC-1420	0	0	0	18	0	0	18
COSC-1436	78	103	56	88	22	56	403
COSC-1437	28	30	34	16	0	15	123
COSC-2425	13	0	0	0	0	0	13
COSC-2436	0	19	9	0	0	0	28
CPMT-1345	0	0	0	0	23	0	23
CPMT-1351	0	16	0	0	0	0	16
CPMT-1449	0	0	0	0	3	0	3
CPMT-1491	0	0	0	0	12	0	12
CRIJ-1301	0	0	83	0	0	0	83
CRIJ-1306	0	17	73	0	0	0	90
CRIJ-1307	0	0	82	0	0	0	82
CRIJ-1310	0	0	51	0	0	0	51
CRIJ-1313	0	0	26	0	0	0	26
CRIJ-2313	0	0	40	0	0	0	40
CRIJ-2314	0	0	58	0	0	0	58
CRIJ-2323	0	0	58	0	0	0	58
CRIJ-2328	0	0	43	0	0	0	43
DAAC-1304	0	52	0	0	0	0	52
DAAC-2307	0	34	0	0	0	0	34
DAAC-2330	0	33	0	0	0	0	33
DAAC-2341	0	33	0	0	0	0	33
DAAC-2343	0	27	0	0	0	0	27
DAAC-2366	0	27	0	0	0	0	27
DANC-1110	0	3	0	0	0	0	3
DANC-1112	0	7	0	15	1	0	23
DANC-1113	0	2	7	0	0	0	9
DANC-1141	0	15	5	0	0	0	20
DANC-1142	0	16	7	0	0	0	23
DANC-1145	0	20	9	0	0	0	29
DANC-1146	0	5	4	0	0	0	9
DANC-1147	0	7	8	0	0	0	15
DANC-1148	0	2	4	0	0	0	6
DANC-1151	0	21	11	0	0	0	32
DANC-1152	0	7	5	0	0	0	12
DANC-1301	0	0	8	0	0	0	8
DANC-1341	0	9	1	15	0	0	25
DANC-1342	0	6	3	8	0	0	17
DANC-1345	0	11	6	26	33	0	76
DANC-1346	0	1	2	13	4	0	20
DANC-1347	0	0	7	8	0	0	15
DANC-1348	0	0	7	7	0	0	14
DANC-2112	0	6	1	0	0	0	7
DANC-2113	0	5	3	0	0	0	8
DANC-2145	0	8	3	0	0	0	11
DANC-2146	0	7	1	0	0	0	8
DANC-2151	0	0	1	0	0	0	1
DANC-2303	139	42	29	86	60	0	356
DANC-2325	0	0	5	0	0	0	5
DFTG-1305	0	0	0	0	27	0	27
DFTG-1325	0	0	0	0	31	0	31
DFTG-1409	0	0	0	0	34	0	34

Course	Campus						Total
	CN	NE	NW	SE	SO	TR	
DFTG-1445	0	0	0	0	13	0	13
DFTG-1458	0	0	0	0	16	0	16
DFTG-2402	0	0	0	0	8	0	8
DFTG-2421	0	0	0	0	8	0	8
DFTG-2423	0	0	0	0	18	0	18
DFTG-2427	0	0	0	0	9	0	9
DFTG-2428	0	0	0	0	6	0	6
DFTG-2430	0	0	0	0	14	0	14
DFTG-2431	0	0	0	0	8	0	8
DFTG-2438	0	0	0	0	6	0	6
DFTG-2440	0	0	0	0	16	0	16
DHYG-1191	0	19	0	0	0	0	19
DHYG-1219	0	21	0	0	0	0	21
DHYG-1260	0	21	0	0	0	0	21
DHYG-1304	0	21	0	0	0	0	21
DHYG-2253	0	19	0	0	0	0	19
DHYG-2301	0	21	0	0	0	0	21
DHYG-2361	0	19	0	0	0	0	19
DITA-1300	0	0	0	13	0	0	13
DITA-1301	0	0	0	10	0	0	10
DRAM-1120	0	16	20	21	4	0	61
DRAM-1121	0	9	7	8	2	0	26
DRAM-1161	0	16	0	0	0	0	16
DRAM-1310	195	187	94	290	96	26	888
DRAM-1320	0	8	0	0	0	0	8
DRAM-1330	0	6	0	0	0	0	6
DRAM-1351	0	35	39	124	0	10	208
DRAM-1352	0	10	7	14	0	10	41
DRAM-2120	0	3	3	5	4	0	15
DRAM-2121	0	10	0	0	0	0	10
DRAM-2331	0	3	0	0	0	0	3
DRAM-2336	0	15	0	0	0	0	15
DRAM-2351	0	3	3	3	0	0	9
DRAM-2366	90	57	45	52	153	25	422
ECON-2301	1316	204	224	471	211	335	2761
ECON-2302	343	134	79	215	81	95	947
EDTC-1313	0	10	0	0	0	0	10
EDUC-1300	0	0	0	0	0	57	57
EDUC-1301	0	118	0	0	63	0	181
EDUC-1325	0	25	0	0	0	0	25
EDUC-2301	0	99	0	0	76	0	175
ELMT-2337	0	0	0	0	15	0	15
ELPT-2455	0	0	0	0	5	0	5
EMSP-1160	0	95	0	0	0	0	95
EMSP-1355	0	4	0	0	0	0	4
EMSP-1356	0	14	0	0	0	0	14
EMSP-1438	0	15	0	0	0	0	15
EMSP-1501	0	95	0	0	0	0	95
EMSP-2160	0	14	0	0	0	0	14
EMSP-2161	0	4	0	0	0	0	4
EMSP-2243	0	10	0	0	0	0	10
EMSP-2267	0	10	0	0	0	0	10
EMSP-2444	0	4	0	0	0	0	4

Course	Campus						Total
	CN	NE	NW	SE	SO	TR	
ENGL-0324	0	134	68	219	137	95	653
ENGL-1301	823	853	806	1207	631	503	4823
ENGL-1302	2644	1076	719	1263	555	756	7013
ENGL-2307	29	31	22	33	30	20	165
ENGL-2308	10	0	2	0	0	5	17
ENGL-2311	218	156	145	200	37	75	831
ENGL-2322	688	0	22	60	51	0	821
ENGL-2323	851	0	44	32	0	107	1034
ENGL-2327	137	66	0	68	19	0	290
ENGL-2328	178	33	71	84	19	25	410
ENGL-2332	110	35	0	74	16	39	274
ENGL-2333	53	20	0	40	0	16	129
ENGL-2342	50	0	0	0	9	0	59
ENGL-2389	0	0	12	0	14	0	26
ENGR-1201	0	0	0	107	0	0	107
ENGR-1304	0	0	0	36	0	0	36
ENGR-2301	0	0	0	28	0	0	28
ENGR-2302	0	0	0	20	0	0	20
ENGR-2305	0	0	0	12	0	0	12
ENGR-2308	0	0	0	18	0	0	18
ENGR-2332	0	0	0	23	0	0	23
EPCT-1311	0	0	18	0	0	0	18
EPCT-1344	0	0	22	0	0	0	22
EPCT-1401	0	0	9	0	0	0	9
EPCT-1407	0	0	9	0	0	0	9
ESOL-0301	0	5	0	9	0	0	14
ESOL-0302	0	0	0	12	0	0	12
ESOL-0303	0	0	0	11	0	0	11
ESOL-0304	0	1	0	19	0	0	20
ESOL-0305	0	2	0	14	0	0	16
ESOL-0306	0	0	0	13	0	0	13
ESOL-0307	0	4	0	11	0	0	15
ESOL-0308	0	3	0	37	0	0	40
ESOL-0309	0	0	1	20	0	0	21
ESOL-0310	0	0	0	18	0	0	18
ESOL-0311	0	0	0	28	0	0	28
ESOL-0312	0	0	0	25	0	0	25
FDNS-1103	0	0	0	26	0	0	26
FDNS-1168	0	0	0	10	0	0	10
FDNS-1301	0	0	0	15	0	0	15
FDNS-1309	0	0	0	20	0	0	20
FDNS-1341	0	0	0	16	0	0	16
FDNS-1346	0	0	0	18	0	0	18
FDNS-1371	0	0	0	11	0	0	11
FDNS-2133	0	0	0	10	0	0	10
FDNS-2169	0	0	0	9	0	0	9
FDNS-2400	0	0	0	12	0	0	12
FIRS-1301	0	0	24	0	0	0	24
FIRS-1313	0	0	24	0	0	0	24
FIRS-1319	0	0	24	0	0	0	24
FIRS-1323	0	0	24	0	0	0	24
FIRS-1329	0	0	24	0	0	0	24
FIRT-1307	0	0	25	0	0	0	25

Course	Campus						Total
	CN	NE	NW	SE	SO	TR	
FIRT-1309	0	0	10	0	0	0	10
FIRT-1315	0	0	10	0	0	0	10
FIRT-1329	0	0	17	0	0	0	17
FIRT-1338	0	0	24	0	0	0	24
FIRT-2331	0	0	9	0	0	0	9
FLMC-1304	0	14	0	0	0	0	14
FLMC-1311	0	6	0	0	0	0	6
FREN-1411	28	44	0	0	38	0	110
FREN-1412	25	43	0	0	0	0	68
FREN-2312	0	28	0	0	0	0	28
FSHN-2301	0	25	0	0	0	0	25
FSHN-2305	0	22	0	0	0	0	22
GAME-1302	0	0	0	0	37	0	37
GAME-1304	0	0	0	0	12	0	12
GAME-1314	0	0	0	0	33	0	33
GAME-1403	0	0	0	0	21	0	21
GAME-2308	0	0	0	0	23	0	23
GAME-2412	0	0	0	0	15	0	15
GEOG-1301	54	41	0	23	0	0	118
GEOG-1302	84	14	0	0	0	0	98
GEOG-1303	55	20	65	19	0	0	159
GEOL-1401	21	23	278	0	0	98	420
GEOL-1403	111	206	63	235	198	108	921
GEOL-1404	29	79	24	103	44	75	354
GEOL-1405	0	19	24	0	11	0	54
GEOL-1445	0	0	47	0	0	0	47
GEOL-1447	0	0	0	11	0	0	11
GERM-1411	0	31	0	0	0	0	31
GERM-1412	0	31	0	0	0	0	31
GERM-2312	0	11	0	0	0	0	11
GISC-1402	0	0	0	0	0	12	12
GISC-2402	0	0	0	0	0	14	14
GISC-2404	0	0	0	0	0	17	17
GOVT-2305	1098	969	555	1044	486	558	4710
GOVT-2306	574	1010	788	972	561	524	4429
HALT-1301	0	0	37	0	0	0	37
HALT-1303	0	0	8	0	0	0	8
HALT-1392	0	0	39	0	0	0	39
HALT-2301	0	0	14	0	0	0	14
HALT-2315	0	0	11	0	0	0	11
HALT-2323	0	0	19	0	0	0	19
HAMG-1213	0	0	0	15	0	0	15
HAMG-1321	0	0	0	13	0	0	13
HAMG-1324	0	0	0	23	0	0	23
HAMG-1340	0	0	0	17	0	0	17
HAMG-2267	0	0	0	5	0	0	5
HAMG-2301	0	0	0	20	0	0	20
HAMG-2305	0	0	0	20	0	0	20
HART-1401	0	0	0	0	47	0	47
HART-1403	0	0	0	0	33	0	33
HART-1407	0	0	0	0	46	0	46
HART-1441	0	0	0	0	46	0	46
HART-1445	0	0	0	0	12	0	12

Course	Campus						Total
	CN	NE	NW	SE	SO	TR	
HART-2402	0	0	0	0	9	0	9
HART-2431	0	0	0	0	42	0	42
HART-2434	0	0	0	0	13	0	13
HART-2436	0	0	0	0	26	0	26
HART-2438	0	0	0	0	37	0	37
HART-2441	0	0	0	0	6	0	6
HART-2442	0	0	0	0	16	0	16
HART-2445	0	0	0	0	44	0	44
HART-2449	0	0	0	0	16	0	16
HECO-1307	25	81	0	0	0	0	106
HECO-1322	0	129	58	327	48	23	585
HIST-1301	848	1083	695	945	583	532	4686
HIST-1302	1903	1073	638	998	515	690	5817
HIST-2301	107	40	33	38	63	37	318
HIST-2312	29	0	37	18	22	37	143
HIST-2321	0	0	0	36	0	0	36
HIST-2322	82	39	0	24	19	85	249
HIST-2327	26	0	0	0	0	0	26
HIST-2328	0	0	9	19	0	0	28
HIST-2381	0	0	0	14	0	0	14
HITT-1341	0	0	0	0	0	32	32
HITT-1342	0	0	0	0	0	32	32
HITT-2161	0	0	0	0	0	14	14
HPRS-1206	0	0	0	0	0	235	235
HPRS-2200	0	27	0	0	0	80	107
HPRS-2201	0	0	0	0	0	123	123
HRPO-1311	85	17	0	12	8	0	122
HRPO-2301	85	0	0	0	4	0	89
HUMA-1301	102	24	220	0	0	81	427
HUMA-1315	0	0	78	43	0	73	194
IBUS-1301	25	0	21	0	0	0	46
IBUS-1302	0	0	7	0	0	0	7
IBUS-1305	0	0	0	0	0	14	14
IFWA-2446	0	0	0	24	0	0	24
IMED-1316	0	16	0	0	0	0	16
IMED-2315	0	22	0	0	0	0	22
INEW-2434	0	11	0	0	0	0	11
INRW-0399	0	179	179	284	208	147	997
ITCC-1401	0	43	0	17	24	0	84
ITCC-1404	0	38	0	0	18	0	56
ITCC-2341	0	10	0	0	0	0	10
ITCC-2408	0	15	0	25	12	0	52
ITCC-2410	0	14	0	21	11	0	46
ITCC-2455	0	8	0	0	0	0	8
ITNW-1372	0	14	0	0	0	0	14
ITNW-1408	0	29	0	0	12	0	41
ITNW-1425	28	48	14	0	6	0	96
ITNW-1454	0	28	0	18	0	0	46
ITSC-1305	78	50	24	22	30	0	204
ITSC-1407	0	22	9	14	7	0	52
ITSC-1425	26	76	24	35	0	0	161
ITSE-1411	30	12	0	0	0	0	42
ITSE-1430	17	11	0	0	0	0	28

Course	Campus						Total
	CN	NE	NW	SE	SO	TR	
ITSE-1450	17	3	0	0	0	0	20
ITSE-2402	0	12	0	0	0	0	12
ITSE-2409	0	18	0	0	9	0	27
ITSE-2417	20	0	0	0	0	0	20
ITSW-1407	56	11	0	15	13	0	95
ITSY-1300	0	54	18	30	29	0	131
ITSY-2400	0	18	0	0	0	0	18
ITSY-2401	25	0	0	0	0	0	25
ITSY-2459	0	14	0	0	0	0	14
KINE-1102	0	0	22	0	11	0	33
KINE-1103	0	0	11	9	8	0	28
KINE-1104	0	0	0	19	7	0	26
KINE-1105	0	0	21	0	0	0	21
KINE-1107	0	31	0	11	0	14	56
KINE-1111	0	10	6	0	0	0	16
KINE-1113	0	32	50	22	56	0	160
KINE-1116	0	0	0	0	46	0	46
KINE-1119	0	17	17	0	0	0	34
KINE-1121	0	12	0	0	0	0	12
KINE-1122	0	12	0	11	12	0	35
KINE-1124	0	0	0	0	8	0	8
KINE-1125	0	14	0	0	0	0	14
KINE-1128	0	0	9	0	5	0	14
KINE-1129	49	9	0	0	0	0	58
KINE-1131	0	3	0	0	0	0	3
KINE-1133	0	46	38	41	26	0	151
KINE-1134	0	55	75	55	70	11	266
KINE-1148	0	31	0	14	9	9	63
KINE-1164	697	698	494	613	430	330	3262
KINE-1304	83	20	64	0	0	0	167
KINE-1306	63	39	76	40	29	24	271
KINE-1308	0	18	0	0	10	0	28
KINE-1338	30	19	24	22	15	0	110
KINE-2103	0	0	5	8	6	0	19
KINE-2104	0	0	0	4	4	0	8
KINE-2107	0	7	0	3	0	7	17
KINE-2111	0	6	5	0	0	0	11
KINE-2113	0	8	13	0	0	0	21
KINE-2121	0	1	0	0	0	0	1
KINE-2122	0	3	0	6	3	0	12
KINE-2123	0	0	0	4	0	0	4
KINE-2125	0	5	0	0	0	0	5
KINE-2128	0	0	4	0	2	0	6
KINE-2129	0	2	0	0	0	0	2
KINE-2131	0	2	0	0	0	0	2
KINE-2133	0	20	12	23	10	0	65
KINE-2134	0	8	12	17	2	6	45
KINE-2148	0	7	0	4	1	4	16
LBRA-1174	0	0	0	0	0	15	15
LBRA-1371	0	0	0	0	0	16	16
LBRA-1372	0	0	0	0	0	17	17
LBRA-1373	0	0	0	0	0	16	16
LBRA-1375	0	0	0	0	0	18	18

Course	Campus						Total
	CN	NE	NW	SE	SO	TR	
LGLA-1303	0	42	0	0	0	0	42
LGLA-1305	0	33	0	0	0	0	33
LGLA-1307	0	53	0	0	0	0	53
LGLA-1345	0	21	0	0	0	0	21
LGLA-1353	0	27	0	0	0	0	27
LGLA-1355	0	29	0	0	0	0	29
LGLA-2281	0	4	0	0	0	0	4
LGLA-2303	0	36	0	0	0	0	36
LGLA-2311	0	19	0	0	0	0	19
LGLA-2380	0	24	0	0	0	0	24
LMGT-1319	0	0	24	0	0	0	24
LMGT-1323	0	0	16	0	0	0	16
LMGT-1325	0	0	9	0	0	0	9
LMGT-2334	0	0	12	0	0	0	12
LMGT-2388	0	0	5	0	0	0	5
LTCA-1311	0	0	0	0	0	27	27
LTCA-1312	0	0	0	0	0	28	28
LTCA-1313	0	0	0	0	0	24	24
LTCA-2314	0	0	0	0	0	23	23
LTCA-2315	0	0	0	0	0	24	24
LTCA-2660	0	0	0	0	0	6	6
LTCA-2661	0	0	0	0	0	1	1
MATH-0114	0	56	0	0	0	0	56
MATH-0115	0	105	0	0	0	0	105
MATH-0116	0	164	0	0	0	0	164
MATH-0117	0	174	0	0	0	0	174
MATH-0118	0	149	0	0	0	0	149
MATH-0119	0	92	0	0	0	0	92
MATH-0361	0	394	347	554	423	368	2086
MATH-0362	0	384	508	562	452	381	2287
MATH-1314	765	971	798	1326	672	491	5023
MATH-1316	103	49	46	35	31	0	264
MATH-1324	0	85	33	134	59	51	362
MATH-1325	0	96	89	163	112	71	531
MATH-1332	99	61	24	106	43	28	361
MATH-1342	339	174	333	508	181	183	1718
MATH-1350	0	19	53	29	46	0	147
MATH-1351	0	20	46	61	61	0	188
MATH-2318	0	0	0	0	10	0	10
MATH-2320	0	7	24	0	5	0	36
MATH-2412	113	153	136	274	189	153	1018
MATH-2413	0	71	87	165	170	46	539
MATH-2414	0	45	60	104	91	20	320
MATH-2415	0	20	48	35	42	0	145
MCHN-2431	0	0	0	0	5	0	5
MCHN-2444	0	0	0	0	9	0	9
MILI-0080	0	0	0	0	2	0	2
MILI-0081	0	0	0	0	5	0	5
MILI-1001	0	0	0	0	5	0	5
MILI-1042	0	0	0	0	5	0	5
MILI-2004	0	0	0	0	3	0	3
MRKG-1301	0	0	0	0	0	22	22
MRKG-1302	50	0	0	0	0	0	50

Course	Campus						Total
	CN	NE	NW	SE	SO	TR	
MRKG-1311	83	31	0	29	22	45	210
MRKG-2333	85	0	0	0	0	14	99
MRKG-2348	27	0	0	0	0	0	27
MRKG-2349	33	0	0	0	0	6	39
MUAP-1190	0	37	6	13	14	0	70
MUAP-1191	0	15	11	5	0	0	31
MUAP-1290	0	42	22	29	16	0	109
MUAP-1291	0	19	3	11	4	0	37
MUAP-1292	0	20	4	2	1	0	27
MUAP-2291	0	2	0	1	1	0	4
MUAP-2292	0	2	7	0	0	0	9
MUEN-1122	0	7	0	18	24	0	49
MUEN-1123	0	0	0	3	0	0	3
MUEN-1131	0	0	4	0	0	0	4
MUEN-1132	0	0	1	10	0	0	11
MUEN-1133	0	0	0	16	0	0	16
MUEN-1134	0	9	0	0	0	0	9
MUEN-1135	0	4	0	0	0	0	4
MUEN-1141	0	20	0	2	0	0	22
MUEN-1151	0	5	1	0	0	0	6
MUEN-1152	0	0	4	0	0	0	4
MUEN-2122	0	1	0	0	0	0	1
MUEN-2132	0	0	2	0	0	0	2
MUEN-2134	0	4	0	0	0	0	4
MUEN-2135	0	9	0	0	0	0	9
MUEN-2141	0	9	0	0	0	0	9
MUEN-2151	0	7	1	0	0	0	8
MUEN-2152	0	0	1	0	0	0	1
MUSI-1163	0	5	0	0	0	0	5
MUSI-1164	0	6	0	0	0	0	6
MUSI-1181	0	32	9	31	17	0	89
MUSI-1182	0	9	0	11	5	0	25
MUSI-1183	0	8	0	0	0	0	8
MUSI-1192	0	7	0	0	0	0	7
MUSI-1211	0	12	0	0	0	0	12
MUSI-1212	0	21	6	10	0	0	37
MUSI-1216	0	15	0	0	0	0	15
MUSI-1217	0	21	6	9	0	0	36
MUSI-1301	17	0	0	0	0	0	17
MUSI-1306	464	392	173	311	239	189	1768
MUSI-1307	28	12	0	0	0	0	40
MUSI-1310	0	36	28	0	0	0	64
MUSI-1390	0	15	0	0	0	0	15
MUSI-2212	0	14	7	0	0	0	21
MUSI-2217	0	14	7	0	0	0	21
OSHT-2309	0	0	18	0	0	0	18
OSHT-2388	0	0	3	0	0	0	3
OSHT-2401	0	0	14	0	0	0	14
PHIL-1301	253	518	246	315	251	135	1718
PHIL-1304	226	76	49	38	135	38	562
PHIL-2303	52	20	24	0	0	0	96
PHIL-2306	111	42	46	121	33	51	404
PHIL-2316	0	0	22	0	0	11	33

Course	Campus						Total
	CN	NE	NW	SE	SO	TR	
PHTC-1300	0	26	0	0	0	0	26
PHTC-1343	0	7	0	0	0	0	7
PHTC-1353	0	12	0	0	0	0	12
PHTC-2343	0	4	0	0	0	0	4
PHTC-2349	0	6	0	0	0	0	6
PHYS-1401	0	46	22	54	33	22	177
PHYS-1402	0	38	13	24	12	14	101
PHYS-1403	0	66	0	0	53	0	119
PHYS-1404	0	46	24	29	0	0	99
PHYS-1415	0	40	46	0	9	0	95
PHYS-2425	0	45	24	104	0	0	173
PHYS-2426	0	22	20	58	23	0	123
POFI-1449	43	0	0	0	9	0	52
POFI-2401	24	0	0	0	0	0	24
POFT-1127	17	0	0	0	4	0	21
POFT-1309	0	0	0	0	8	0	8
POFT-1319	53	0	0	0	0	0	53
POFT-1321	30	0	0	0	0	0	30
POFT-1329	26	0	0	0	5	0	31
POFT-2312	0	0	0	0	13	0	13
PSTR-1401	0	0	0	35	0	0	35
PSTR-2331	0	0	0	15	0	0	15
PSYC-1300	0	19	0	19	12	0	50
PSYC-2301	785	779	519	840	423	423	3769
PSYC-2306	29	52	87	0	19	18	205
PSYC-2308	86	36	57	16	0	0	195
PSYC-2314	209	125	163	257	95	270	1119
PSYC-2315	28	55	0	14	12	41	150
PSYC-2316	0	0	37	18	0	11	66
PSYC-2319	74	0	14	0	0	0	88
PSYT-1313	0	24	0	0	0	0	24
PSYT-2339	0	32	0	0	0	0	32
PSYT-2345	0	35	0	0	0	0	35
PTHA-1225	0	0	0	0	0	30	30
PTHA-1405	0	0	0	0	0	30	30
PTHA-1431	0	0	0	0	0	30	30
PTHA-2239	0	0	0	0	0	24	24
PTHA-2361	0	0	0	0	0	24	24
PTHA-2363	0	0	0	0	0	24	24
PTRT-1324	0	0	0	0	11	0	11
RADR-1267	0	0	0	0	0	24	24
RADR-2213	0	0	0	0	0	22	22
RADR-2235	0	0	0	0	0	22	22
RADR-2305	0	0	0	0	0	24	24
RADR-2331	0	0	0	0	0	24	24
RADR-2367	0	0	0	0	0	22	22
RBTC-1351	0	0	0	0	35	0	35
RBTC-1401	0	0	0	0	25	0	25
RBTC-2445	0	0	0	0	13	0	13
RDNG-0361	0	106	49	137	165	80	537
RELE-1300	0	30	0	0	0	0	30
RELE-1303	0	16	0	0	0	0	16
RELE-1307	0	21	0	0	0	0	21

Course	Campus						Total
	CN	NE	NW	SE	SO	TR	
RELE-1311	0	56	0	0	0	0	56
RELE-1319	0	39	0	0	0	0	39
RELE-1406	0	57	0	0	0	0	57
RELE-2301	0	33	0	0	0	0	33
RNSG-1105	0	0	0	0	0	129	129
RNSG-1293	0	0	0	0	0	25	25
RNSG-1360	0	0	0	0	0	129	129
RNSG-1413	0	0	0	0	0	129	129
RNSG-1441	0	0	0	0	0	119	119
RNSG-1443	0	0	0	0	0	127	127
RNSG-1461	0	0	0	0	0	119	119
RNSG-2201	0	0	0	0	0	159	159
RNSG-2208	0	0	0	0	0	159	159
RNSG-2260	0	0	0	0	0	159	159
RNSG-2261	0	0	0	0	0	159	159
RNSG-2461	0	0	0	0	0	127	127
RSPT-1141	0	0	0	0	0	15	15
RSPT-1207	0	0	0	0	0	20	20
RSPT-1266	0	0	0	0	0	20	20
RSPT-1331	0	0	0	0	0	20	20
RSPT-2131	0	0	0	0	0	15	15
RSPT-2133	0	0	0	0	0	15	15
RSPT-2147	0	0	0	0	0	15	15
RSPT-2267	0	0	0	0	0	15	15
RSPT-2353	0	0	0	0	0	15	15
RSTO-1304	0	0	0	39	0	0	39
RSTO-1325	0	0	0	62	0	0	62
RTVB-1302	0	25	0	0	0	0	25
RTVB-1309	0	19	0	0	0	0	19
RTVB-1321	0	27	0	0	0	0	27
RTVB-1325	0	21	0	0	0	0	21
RTVB-1347	0	26	0	0	0	0	26
RTVB-1355	0	29	0	0	0	0	29
RTVB-2250	0	6	0	0	0	0	6
RTVB-2265	0	5	0	0	0	0	5
RTVB-2330	0	20	0	0	0	0	20
RTVB-2387	0	6	0	0	0	0	6
SCWK-2305	0	48	0	0	0	0	48
SLNG-1211	0	0	0	0	0	43	43
SLNG-1291	0	0	0	0	0	19	19
SLNG-1321	0	0	0	0	0	61	61
SLNG-1345	0	0	0	0	0	65	65
SLNG-1404	0	0	0	0	0	57	57
SLNG-1405	0	0	0	0	0	70	70
SLNG-2267	0	0	0	0	0	24	24
SLNG-2301	0	0	0	0	0	55	55
SLNG-2303	0	0	0	0	0	26	26
SLNG-2436	0	0	0	0	0	25	25
SLPS-1371	0	0	29	0	0	0	29
SLPS-1391	0	0	30	0	0	0	30
SOCI-1301	648	402	344	532	168	390	2484
SOCI-1306	142	71	0	63	0	0	276
SOCI-2301	84	0	0	0	0	0	84

Course	Campus						Total
	CN	NE	NW	SE	SO	TR	
SOCI-2336	0	0	0	24	0	14	38
SOCW-2361	0	51	0	38	0	0	89
SOCW-2362	0	38	0	0	0	0	38
SPAN-1411	128	217	185	153	127	63	873
SPAN-1412	75	109	199	147	153	38	721
SPAN-2311	83	63	33	58	33	39	309
SPAN-2312	0	39	20	45	24	20	148
SPCH-1144	0	11	0	0	0	0	11
SPCH-1311	526	756	636	773	520	524	3735
SPCH-1315	171	212	51	139	0	23	596
SPCH-1318	87	21	19	0	0	0	127
SPCH-1321	169	217	51	317	161	110	1025
SRGT-1267	0	0	0	0	0	28	28
SRGT-1441	0	0	0	0	0	28	28
SRGT-1442	0	0	0	0	0	28	28
SRVY-1301	0	0	0	0	17	0	17
STSC-0111	0	569	359	721	507	340	2496
TECA-1303	0	27	0	0	0	0	27
TECA-1311	0	32	0	0	0	0	32
TECA-1318	0	20	0	0	0	0	20
TECA-1354	0	57	0	0	0	0	57
TECM-1303	0	0	0	0	14	0	14
TRVM-1201	0	0	0	10	0	0	10
TRVM-1327	0	0	0	24	0	0	24
WIND-2459	0	0	0	0	2	0	2
WLDG-1412	0	0	0	0	16	0	16
WLDG-1417	0	0	0	0	48	0	48
WLDG-1428	0	0	0	0	48	0	48
WLDG-1430	0	0	0	0	45	0	45
WLDG-1434	0	0	0	0	35	0	35
WLDG-1435	0	0	0	0	16	0	16
WLDG-2451	0	0	0	0	26	0	26
WLDG-2453	0	0	0	0	16	0	16
TOTAL	25036	26835	19207	26069	16415	16088	129650

Section V

IPEDS Race & Ethnicity Data

Section V contains race/ethnicity data of a format similar to earlier Statistical Handbooks. For Tables 14 through 19, the race/ethnicity Hispanic was defined as anyone with the *Colleague* field of Ethnics (see Tables 3 to 8) equal to Hispanic/Latino, except International. Tables 3 through 8 in Section II contain the raw data for the categories of race and ethnicity. The data in this section may not be the correct categories for all applications (e.g. grant proposals).

LIMITATIONS OF STATISTICAL HANDBOOK DATA

Section V contains data on TCCD credit students for Spring 2016 (does not include Continuing Education students). This section is based on data from the *Colleague* system. Minor differences are to be expected between *Colleague* reports that are run at different times; thus, this data may vary slightly from other *Colleague* reports.

Minor differences are to be expected between the data in this section and the certified state reports.

Table 14. 2016SP Race/Ethnicity by Gender TCCD District

This page contains ethnicity data of a format similar to previous Statistical Handbooks. For this table, the race Hispanic was defined as anyone with the Colleague field of Ethnic equal to Hispanic/Latino. The data in this table may not be the correct categories for all applications (e.g. grant proposals).

Race/Ethnicity		Gender		Total
		Female	Male	
White	Count	10967	8586	19553
	% within Race	56.1%	43.9%	100.0%
	% within Gender	39.2%	42.8%	40.7%
Black/African American	Count	5443	3152	8595
	% within Race	63.3%	36.7%	100.0%
	% within Gender	19.4%	15.7%	17.9%
Hispanic Latino	Count	8720	5769	14489
	% within Race	60.2%	39.8%	100.0%
	% within Gender	31.1%	28.7%	30.1%
Asian	Count	1538	1448	2986
	% within Race	51.5%	48.5%	100.0%
	% within Gender	5.5%	7.2%	6.2%
American Indian/ Alaska Native	Count	110	96	206
	% within Race	53.4%	46.6%	100.0%
	% within Gender	.4%	.5%	.4%
International	Count	224	184	408
	% within Race	54.9%	45.1%	100.0%
	% within Gender	.8%	.9%	.8%
Unknown/Not Reported	Count	296	271	567
	% within Race	52.2%	47.8%	100.0%
	% within Gender	1.1%	1.4%	1.2%
Native Hawaiian/ Pacific Islander	Count	42	56	98
	% within Race	42.9%	57.1%	100.0%
	% within Gender	.1%	.3%	.2%
Multiracial	Count	670	506	1176
	% within Race	57.0%	43.0%	100.0%
	% within Gender	2.4%	2.5%	2.4%
Total	Count	28010	20068	48078
	% within Race	58.3%	41.7%	100.0%
	% within Gender	100.0%	100.0%	100.0%

Table 14a. 2016SP Race/Ethnicity by Gender TCC Connect

This page contains ethnicity data of a format similar to previous Statistical Handbooks. For this table, the race Hispanic was defined as anyone with the Colleague field of Ethnic equal to Hispanic/Latino. The data in this table may not be the correct categories for all applications (e.g. grant proposals).

Race/Ethnicity		Gender		Total
		Female	Male	
White	Count	4591	2498	7089
	% within Race	64.80%	35.20%	100.00%
	% within Gender	48.00%	53.30%	49.80%
Black/African American	Count	1890	651	2541
	% within Race	74.40%	25.60%	100.00%
	% within Gender	19.80%	13.90%	17.80%
Hispanic Latino	Count	2196	939	3135
	% within Race	70.00%	30.00%	100.00%
	% within Gender	23.00%	20.00%	22.00%
Asian	Count	477	351	828
	% within Race	57.60%	42.40%	100.00%
	% within Gender	5.00%	7.50%	5.80%
American Indian/ Alaska Native	Count	37	17	54
	% within Race	68.50%	31.50%	100.00%
	% within Gender	0.40%	0.40%	0.40%
International	Count	38	27	65
	% within Race	58.50%	41.50%	100.00%
	% within Gender	0.40%	0.60%	0.50%
Unknown/Not Reported	Count	66	67	133
	% within Race	49.60%	50.40%	100.00%
	% within Gender	0.70%	1.40%	0.90%
Native Hawaiian/ Pacific Islander	Count	13	13	26
	% within Race	50.00%	50.00%	100.00%
	% within Gender	0.10%	0.30%	0.20%
Multiracial	Count	249	127	376
	% within Race	66.20%	33.80%	100.00%
	% within Gender	2.60%	2.70%	2.60%
Total	Count	9557	4690	14247
	% within Race	67.10%	32.90%	100.00%
	% within Gender	100.00%	100.00%	100.00%

Table 15. 2016SP Race/Ethnicity by Gender SO Campus

This page contains ethnicity data of a format similar to previous Statistical Handbooks. For this table, the race Hispanic was defined as anyone with the Colleague field of Ethnicity equal to Hispanic/Latino. The data in this table may not be the correct categories for all applications (e.g. grant proposals).

Race/Ethnicity		Gender		Total
		Female	Male	
White	Count	1060	1281	2341
	% within Race	45.3%	54.7%	100.0%
	% within Gender	27.8%	35.4%	31.5%
Black/African American	Count	1031	727	1758
	% within Race	58.6%	41.4%	100.0%
	% within Gender	27.0%	20.1%	23.7%
Hispanic Latino	Count	1428	1215	2643
	% within Race	54.0%	46.0%	100.0%
	% within Gender	37.5%	33.6%	35.6%
Asian	Count	134	198	332
	% within Race	40.4%	59.6%	100.0%
	% within Gender	3.5%	5.5%	4.5%
American Indian/ Alaska Native	Count	7	21	28
	% within Race	25.0%	75.0%	100.0%
	% within Gender	.2%	.6%	.4%
International	Count	26	43	69
	% within Race	37.7%	62.3%	100.0%
	% within Gender	.7%	1.2%	.9%
Unknown/Not Reported	Count	46	48	94
	% within Race	48.9%	51.1%	100.0%
	% within Gender	1.2%	1.3%	1.3%
Native Hawaiian/ Pacific Islander	Count	3	7	10
	% within Race	30.0%	70.0%	100.0%
	% within Gender	.1%	.2%	.1%
Multiracial	Count	78	76	154
	% within Race	50.6%	49.4%	100.0%
	% within Gender	2.0%	2.1%	2.1%
Total	Count	3813	3616	7429
	% within Race	51.3%	48.7%	100.0%
	% within Gender	100.0%	100.0%	100.0%

Table 16. 2016SP Race/Ethnicity by Gender NE Campus

This page contains ethnicity data of a format similar to previous Statistical Handbooks. For this table, the race Hispanic was defined as anyone with the Colleague field of Ethnic equal to Hispanic/Latino. The data in this table may not be the correct categories for all applications (e.g. grant proposals).

Race/Ethnicity		Gender		Total
		Female	Male	
White	Count	3031	2541	5572
	% within Race	54.4%	45.6%	100.0%
	% within Gender	46.3%	51.2%	48.4%
Black/African American	Count	1052	635	1687
	% within Race	62.4%	37.6%	100.0%
	% within Gender	16.1%	12.8%	14.7%
Hispanic Latino	Count	1676	1125	2801
	% within Race	59.8%	40.2%	100.0%
	% within Gender	25.6%	22.7%	24.4%
Asian	Count	414	361	775
	% within Race	53.4%	46.6%	100.0%
	% within Gender	6.3%	7.3%	6.7%
American Indian/ Alaska Native	Count	27	29	56
	% within Race	48.2%	51.8%	100.0%
	% within Gender	.4%	.6%	.5%
International	Count	73	44	117
	% within Race	62.4%	37.6%	100.0%
	% within Gender	1.1%	.9%	1.0%
Unknown/Not Reported	Count	80	73	153
	% within Race	52.3%	47.7%	100.0%
	% within Gender	1.2%	1.5%	1.3%
Native Hawaiian/ Pacific Islander	Count	14	15	29
	% within Race	48.3%	51.7%	100.0%
	% within Gender	.2%	.3%	.3%
Multiracial	Count	173	138	311
	% within Race	55.6%	44.4%	100.0%
	% within Gender	2.6%	2.8%	2.7%
Total	Count	6540	4961	11501
	% within Race	56.9%	43.1%	100.0%
	% within Gender	100.0%	100.0%	100.0%

Table 17. 2016SP Race/Ethnicity by Gender NW Campus

This page contains ethnicity data of a format similar to previous Statistical Handbooks. For this table, the race Hispanic was defined as anyone with the Colleague field of Ethnic equal to Hispanic/Latino. The data in this table may not be the correct categories for all applications (e.g. grant proposals).

Race/Ethnicity		Gender		Total
		Female	Male	
White	Count	1854	1723	3577
	% within Race	51.8%	48.2%	100.0%
	% within Gender	42.9%	46.6%	44.6%
Black/African American	Count	455	370	825
	% within Race	55.2%	44.8%	100.0%
	% within Gender	10.5%	10.0%	10.3%
Hispanic Latino	Count	1645	1186	2831
	% within Race	58.1%	41.9%	100.0%
	% within Gender	38.1%	32.1%	35.3%
Asian	Count	176	188	364
	% within Race	48.4%	51.6%	100.0%
	% within Gender	4.1%	5.1%	4.5%
American Indian/ Alaska Native	Count	19	22	41
	% within Race	46.3%	53.7%	100.0%
	% within Gender	.4%	.6%	.5%
International	Count	25	30	55
	% within Race	45.5%	54.5%	100.0%
	% within Gender	.6%	.8%	.7%
Unknown/Not Reported	Count	35	62	97
	% within Race	36.1%	63.9%	100.0%
	% within Gender	.8%	1.7%	1.2%
Native Hawaiian/ Pacific Islander	Count	7	13	20
	% within Race	35.0%	65.0%	100.0%
	% within Gender	.2%	.4%	.2%
Multiracial	Count	104	104	208
	% within Race	50.0%	50.0%	100.0%
	% within Gender	2.4%	2.8%	2.6%
Total	Count	4320	3698	8018
	% within Race	53.9%	46.1%	100.0%
	% within Gender	100.0%	100.0%	100.0%

Table 18. 2016SP Race/Ethnicity by Gender SE Campus

This page contains ethnicity data of a format similar to previous Statistical Handbooks. For this table, the race Hispanic was defined as anyone with the Colleague field of Ethnic equal to Hispanic/Latino. The data in this table may not be the correct categories for all applications (e.g. grant proposals).

Race/Ethnicity		Gender		Total
		Female	Male	
White	Count	1600	1405	3005
	% within Race	53.2%	46.8%	100.0%
	% within Gender	26.0%	30.6%	28.0%
Black/African American	Count	1702	1050	2752
	% within Race	61.8%	38.2%	100.0%
	% within Gender	27.7%	22.9%	25.6%
Hispanic Latino	Count	1970	1348	3318
	% within Race	59.4%	40.6%	100.0%
	% within Gender	32.0%	29.3%	30.9%
Asian	Count	521	508	1029
	% within Race	50.6%	49.4%	100.0%
	% within Gender	8.5%	11.1%	9.6%
American Indian/ Alaska Native	Count	29	18	47
	% within Race	61.7%	38.3%	100.0%
	% within Gender	.5%	.4%	.4%
International	Count	88	73	161
	% within Race	54.7%	45.3%	100.0%
	% within Gender	1.4%	1.6%	1.5%
Unknown/Not Reported	Count	82	55	137
	% within Race	59.9%	40.1%	100.0%
	% within Gender	1.3%	1.2%	1.3%
Native Hawaiian/ Pacific Islander	Count	11	14	25
	% within Race	44.0%	56.0%	100.0%
	% within Gender	.2%	.3%	.2%
Multiracial	Count	148	124	272
	% within Race	54.4%	45.6%	100.0%
	% within Gender	2.4%	2.7%	2.5%
Total	Count	6151	4595	10746
	% within Race	57.2%	42.8%	100.0%
	% within Gender	100.0%	100.0%	100.0%

Table 19. 2016SP Race/Ethnicity by Gender TR Campus

This page contains ethnicity data of a format similar to previous Statistical Handbooks. For this table, the race Hispanic was defined as anyone with the Colleague field of Ethnic equal to Hispanic/Latino. The data in this table may not be the correct categories for all applications (e.g. grant proposals).

Race/Ethnicity		Gender		Total
		Female	Male	
White	Count	1584	870	2454
	% within Race	64.5%	35.5%	100.0%
	% within Gender	34.5%	33.4%	34.1%
Black/African American	Count	738	386	1124
	% within Race	65.7%	34.3%	100.0%
	% within Gender	16.1%	14.8%	15.6%
Hispanic Latino	Count	1897	1078	2975
	% within Race	63.8%	36.2%	100.0%
	% within Gender	41.3%	41.4%	41.3%
Asian	Count	183	116	299
	% within Race	61.2%	38.8%	100.0%
	% within Gender	4.0%	4.5%	4.2%
American Indian/ Alaska Native	Count	15	12	27
	% within Race	55.6%	44.4%	100.0%
	% within Gender	.3%	.5%	.4%
International	Count	44	39	83
	% within Race	53.0%	47.0%	100.0%
	% within Gender	1.0%	1.5%	1.2%
Unknown/Not Reported	Count	43	35	78
	% within Race	55.1%	44.9%	100.0%
	% within Gender	.9%	1.3%	1.1%
Native Hawaiian/ Pacific Islander	Count	5	6	11
	% within Race	45.5%	54.5%	100.0%
	% within Gender	.1%	.2%	.2%
Multiracial	Count	88	59	147
	% within Race	59.9%	40.1%	100.0%
	% within Gender	1.9%	2.3%	2.0%
Total	Count	4597	2601	7198
	% within Race	63.9%	36.1%	100.0%
	% within Gender	100.0%	100.0%	100.0%

Section VI

Other Student & Enrollment Data

LIMITATIONS OF STATISTICAL HANDBOOK DATA

Section VI contains data on TCCD credit students for Spring 2016 (does not include Continuing Education students). This section is based on data from the *Colleague* system. Minor differences are to be expected between *Colleague* reports that are run at different times; thus, this data may vary slightly from other *Colleague* reports.

Minor differences are to be expected between the data in this section and the certified state reports.

Table 20a. 2016SP Developmental Education Courses by Campus

Course	Campus					Total
	NE	NW	SE	SO	TR	
ENGL-0324	134	68	219	137	95	653
ESOL-0301	5	0	9	0	0	14
ESOL-0302	0	0	12	0	0	12
ESOL-0303	0	0	11	0	0	11
ESOL-0304	1	0	19	0	0	20
ESOL-0305	2	0	14	0	0	16
ESOL-0306	0	0	13	0	0	13
ESOL-0307	4	0	11	0	0	15
ESOL-0308	3	0	37	0	0	40
ESOL-0309	0	1	20	0	0	21
ESOL-0310	0	0	18	0	0	18
ESOL-0311	0	0	28	0	0	28
ESOL-0312	0	0	25	0	0	25
INRW-0399	179	179	284	208	147	997
MATH-0114	56	0	0	0	0	56
MATH-0115	105	0	0	0	0	105
MATH-0116	164	0	0	0	0	164
MATH-0117	174	0	0	0	0	174
MATH-0118	149	0	0	0	0	149
MATH-0119	92	0	0	0	0	92
MATH-0361	394	347	554	423	368	2086
MATH-0362	384	508	562	452	381	2287
RDNG-0361	106	49	137	165	80	537
STSC-0111	569	359	721	507	340	2496
TOTAL	2521	1511	2694	1892	1411	10029

Table 20b. 2016SP Dev. Education Unduplicated Headcount by Campus

Campus		Developmental Education
NE	Count	1562
	% within Dev. Education	23.1%
NW	Count	1165
	% within Dev. Education	17.3%
SE	Count	1759
	% within Dev. Education	26.1%
SO	Count	1296
	% within Dev. Education	19.2%
TR	Count	967
	% within Dev. Education	14.3%
Total	Count	6749
	% within Dev. Education	100.0%

For TCCD district as a whole, there were 6,626 unduplicated students taking developmental education for 2016SP.

Table 21. 2016SP TCC Connect Enrollments

There were 25,160 enrollments in TCC Connect for 2016SP by 14,247 unduplicated students.

TCC Connect	
# of Enrollments	25,160
Sum Semester Hours	75,356
Sum Contact Hours	1,263,120

These 25,160 course enrollments for 2016SP were distributed as follows:

TCC Connect	# of Enrollments
Dual Credit	5,682
DLRNG	18,892
WKEND	586
Total	25,160

The data reported on this page for TCC Connect needs to be clarified as follows:

The 25,160 TCC Connect enrollments are the 2016SP enrollments with a TCC Connect flag of “Y” in Colleague.

Of these 25,160 TCC Connect enrollments, the 18,892 DLRNG enrollments are the enrollments with a Management Group of DLRNG. This is a different definition than the data in Table 22. The 18,892 DLRNG enrollments include 586 Dual Credit enrollments.

Of these 25,160 TCC Connect enrollments, the 586 WKEND enrollments are the enrollments with a Management Group of WKEND. This is a different definition than the data in Table 25. All 586 TCC Connect WKEND enrollments are for 7 week courses.

Of these 25,160 TCC Connect enrollments, the 5,682 Dual Credit enrollments are the enrollments with a blank value for Management Group. The total number of Dual Credit enrollments is 6,268 (5,682 plus 586 DLRNG above).

Table 22a. 2016SP Distance Learning Enrollments by Campus

Campus		Instructional Method	Total
		CD1	
CN	Count	18892	18892
	% within Instructional Method	93.7%	93.7%
NE	Count	486	486
	% within Instructional Method	2.4%	2.4%
NW	Count	248	248
	% within Instructional Method	1.2%	1.2%
SE	Count	254	254
	% within Instructional Method	1.3%	1.3%
TR	Count	276	276
	% within Instructional Method	1.4%	1.4%
Total	Count	20156	20156
	% within Instructional Method	100.0%	100.0%

Table 22b. 2016SP Distance Learning Unduplicated Headcount by Campus

Campus		Distance Learning
CN	Count	10579
	% within Distance Learning	90.7%
NE	Count	407
	% within Distance Learning	3.5%
NW	Count	188
	% within Distance Learning	1.6%
SE	Count	254
	% within Distance Learning	2.2%
TR	Count	240
	% within Distance Learning	2.1%
Total	Count	11668
	% within Distance Learning	100.0%

For TCCD district as a whole, there were 11,116 unduplicated students taking distance learning for 2016SP. The 20,156 DLRNG enrollments in Table 22a include the 18,892 DLRNG TCC Connect DLRNG enrollments in Table 21.

Table 23. 2016SP Percentage of Sections Taught by Adjunct & Full-time Faculty

Sections listed for: 2016SP

Campus	Total Sections	Sections Taught by Adjunct	Sections Taught by Full-time	% of Sections Taught by Adjunct	% of Sections Taught by Full-time
District	7,347	3,119	4,228	42.45%	57.55%
Northeast	1,893	771	1,122	40.73%	59.27%
Northwest	1,247	483	764	38.73%	61.27%
Southeast	1,272	530	742	41.67%	58.33%
South	1,029	384	645	37.32%	62.68%
Trinity River	869	434	435	49.94%	50.06%
*TCC Connect	1,037	517	520	49.86%	50.14%

Notes: This report was run on the *Colleague* system using the semester as defined by the *Colleague* field Term.

This report may differ from other *Colleague* reports with different run time/dates. The data in Table 23 is based on an XPAF run made 2/4/2016.

*By definition, all TCC Connect faculty are not full-time faculty. For this XPAF report, sections taught for TCC Connect by full-time faculty on the other five campuses are reporting overload for these full-time faculty on the other five campuses.

Table 24. Ratio Comparison of 2016SP data to 2015SP data

TERM: 2015SP*		CREDIT STUDENTS - ALL ENROLLMENTS		
<i>Colleague XUHS run on 02/05/15</i>				
CAMPUS	HEADCOUNT	NUMBER OF ENROLLMENTS	CONTACT HOURS	SEMESTER HOURS
Northeast	12,109	31,863	1,653,912	83,926
Northwest	8,508	21,847	1,129,672	58,506
Southeast	11,011	30,022	1,508,800	81,117
South	7,765	18,535	1,023,464	51,696
Trinity River	20,954	43,652	2,275,776	125,776
TOTAL	60,347	145,919	7,591,624	401,021
TCCD (Undupl)	48,112			

*Excludes NSOR enrollments

TERM: 2016SP*		CREDIT STUDENTS - ALL ENROLLMENTS		
<i>Colleague XUHS run on 02/04/16</i>				
CAMPUS	HEADCOUNT	NUMBER OF ENROLLMENTS	CONTACT HOURS	SEMESTER HOURS
Northeast	11,501	30,246	1,535,792	79,119
Northwest	8,018	21,432	1,097,032	57,400
Southeast	10,746	29,112	1,433,216	78,338
South	7,429	18,166	992,832	50,620
Trinity River	7,198	17,490	965,328	47,735
TCC Connect	14,247	25,160	1,263,120	75,356
TOTAL	59,139	141,606	7,287,320	388,568
TCCD (Undupl)	48,078			

*Excludes NSOR enrollments

2016SP/2015SP* RATIOS				
CAMPUS	HEADCOUNT	NUMBER OF ENROLLMENTS	CONTACT HOURS	SEMESTER HOURS
Northeast	0.950	0.949	0.929	0.943
Northwest	0.942	0.981	0.971	0.981
Southeast	0.976	0.970	0.950	0.966
South	0.957	0.980	0.970	0.979
Trinity River	0.344	0.401	0.424	0.380
TOTAL	0.980	0.970	0.960	0.969
TCCD (Undupl)	0.999			

*Excludes NSOR enrollments

PERCENT INCREASE/DECREASE				
CAMPUS	HEADCOUNT	NUMBER OF ENROLLMENTS	CONTACT HOURS	SEMESTER HOURS
Northeast	-5.0%	-5.1%	-7.1%	-5.7%
Northwest	-5.8%	-1.9%	-2.9%	-1.9%
Southeast	-2.4%	-3.0%	-5.0%	-3.4%
South	-4.3%	-2.0%	-3.0%	-2.1%
Trinity River	-65.6%	-59.9%	-57.6%	-62.0%
TOTAL	-2.0%	-3.0%	-4.0%	-3.1%
TCCD (Undupl)	-0.1%			

This section contains data for all 2016SP enrollments with a Management Group of WKEND. This includes both the 586 TCC Connect WKEND enrollments in Table 21 and all other enrollments in courses defined as taught on the weekend.

Table 25a. 2016SP Weekend College Enrollments by Campus

Campus	Instructional Method									Total	
		BB1	BL1	CA1	CL1	HL1	IN1	LA1	LE1		
CN	Count	23	0	0	0	0	489	0	74	0	586
	% within Instructional Method	48.9%	0.0%	0.0%	0.0%	0.0%	100.0%	0.0%	9.1%	0.0%	6.6%
NE	Count	0	18	215	71	0	0	6	281	1559	2150
	% within Instructional Method	0.0%	22.8%	63.2%	27.2%	0.0%	0.0%	100.0%	34.6%	23.4%	24.3%
NW	Count	0	14	37	116	0	0	0	108	1904	2179
	% within Instructional Method	0.0%	17.7%	10.9%	44.4%	0.0%	0.0%	0.0%	13.3%	28.5%	24.6%
SE	Count	0	0	41	0	0	0	0	135	952	1128
	% within Instructional Method	0.0%	0.0%	12.1%	0.0%	0.0%	0.0%	0.0%	16.6%	14.3%	12.8%
SO	Count	0	29	29	74	0	0	0	123	1125	1380
	% within Instructional Method	0.0%	36.7%	8.5%	28.4%	0.0%	0.0%	0.0%	15.1%	16.9%	15.6%
TR	Count	24	18	18	0	140	0	0	91	1133	1424
	% within Instructional Method	51.1%	22.8%	5.3%	0.0%	100.0%	0.0%	0.0%	11.2%	17.0%	16.1%
Total	Count	47	79	340	261	140	489	6	812	6673	8847
	% within Instructional Method	100.0%	100.0%	100.0%	100.0%	100.0%	100.0%	100.0%	100.0%	100.0%	100.0%

Table 25b. 2016SP Weekend College Unduplicated Headcount by Campus

Campus		Weekend College
CN	Count	341
	% within Weekend College	5.0%
NE	Count	1739
	% within Weekend College	25.4%
NW	Count	1688
	% within Weekend College	24.6%
SE	Count	878
	% within Weekend College	12.8%
SO	Count	1097
	% within Weekend College	16.0%
TR	Count	1106
	% within Weekend College	16.1%
Total	Count	6849
	% within Weekend College	100.0%

For TCCD district as a whole, there were 6,535 unduplicated students taking weekend college courses for 2016SP.